

Data Path : Z:\pestpcbsrv\HPCHEM1\FID\_C\Data\FC112020AL\  
 Data File : FC050880.D  
 Signal(s) : FID1A.CH  
 Acq On : 20 Nov 2020 17:10  
 Operator : DD\AJ  
 Sample : L4797-01  
 Misc :  
 ALS Vial : 6 Sample Multiplier: 1

Integration File: autoint1.e  
 Quant Time: Nov 20 22:51:59 2020  
 Quant Method : Z:\pestpcbsrv\HPCHEM1\FID\_C\Method\Alaphatic EPH 110220.M  
 Quant Title : GC Extractables  
 QLast Update : Tue Nov 03 02:36:40 2020  
 Response via : Initial Calibration  
 Integrator: ChemStation 6890 Scale Mode: Large solvent peaks clipped

Volume Inj. : 1 ul  
 Signal Phase : Rxi-1ms  
 Signal Info : 20M x 0.18mm x 0.18um

Compound	R.T.	Response	Conc Units
-----			
System Monitoring Compounds			
9) S ortho-Terphenyl (SURR)	11.608	5230247	42.582 ug/ml
Spiked Amount	50.000	Recovery	= 85.16%
12) S 1-chlorooctadecane (S...	13.041	3916364	40.563 ug/ml
Spiked Amount	50.000	Recovery	= 81.13%

Target Compounds

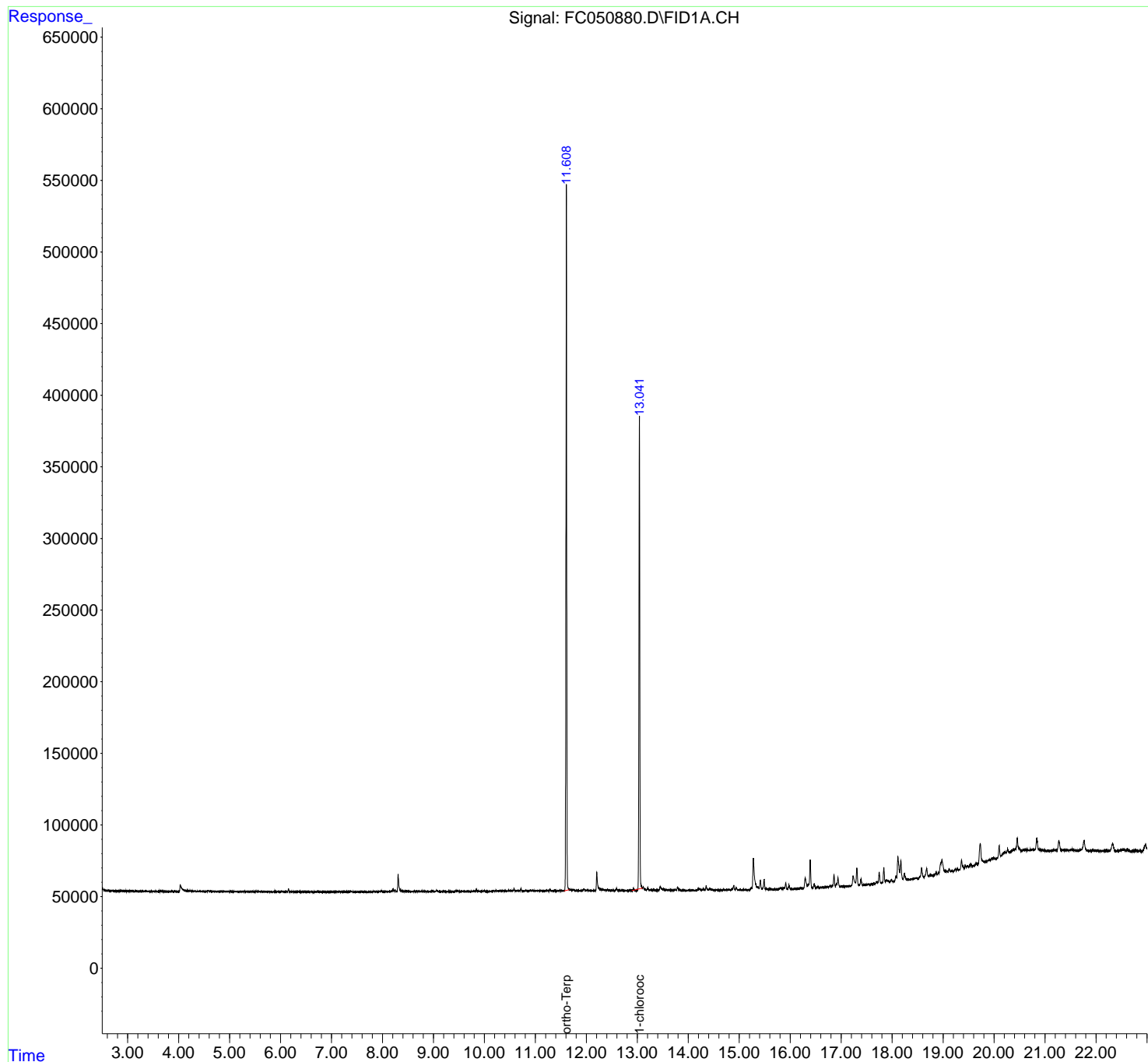
-----

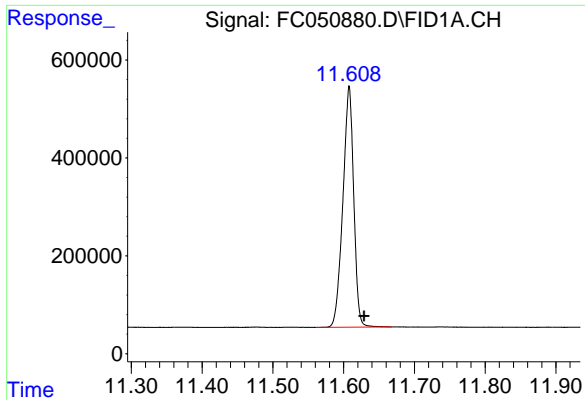
(f)=RT Delta > 1/2 Window (m)=manual int.

Data Path : Z:\pestpcbsrv\HPCHEM1\FID\_C\Data\FC112020AL\  
Data File : FC050880.D  
Signal(s) : FID1A.CH  
Acq On : 20 Nov 2020 17:10  
Operator : DD\AJ  
Sample : L4797-01  
Misc :  
ALS Vial : 6 Sample Multiplier: 1

Integration File: autoint1.e  
Quant Time: Nov 20 22:51:59 2020  
Quant Method : Z:\pestpcbsrv\HPCHEM1\FID\_C\Method\Alaphatic EPH 110220.M  
Quant Title : GC Extractables  
QLast Update : Tue Nov 03 02:36:40 2020  
Response via : Initial Calibration  
Integrator: ChemStation 6890 Scale Mode: Large solvent peaks clipped

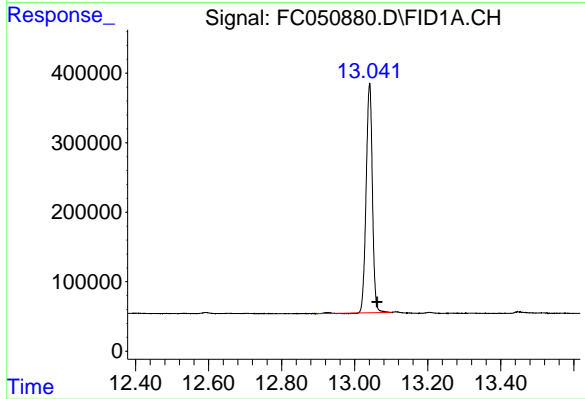
Volume Inj. : 1 ul  
Signal Phase : Rxi-1ms  
Signal Info : 20M x 0.18mm x 0.18um





#9 ortho-Terphenyl (SURR)

R.T.: 11.608 min  
Delta R.T.: -0.021 min  
Response: 5230247  
Conc: 42.58 ug/ml



#12 1-chlorooctadecane (SURR)

R.T.: 13.041 min  
Delta R.T.: -0.021 min  
Response: 3916364  
Conc: 40.56 ug/ml