

Data Path : Z:\pestpcbsrv\HPCHEM1\FID\_C\Data\FC112020AL\  
 Data File : FC050897.D  
 Signal(s) : FID1A.CH  
 Acq On : 21 Nov 2020 4:15  
 Operator : DD\AJ  
 Sample : L4809-10  
 Misc :  
 ALS Vial : 21 Sample Multiplier: 1

Integration File: autoint1.e  
 Quant Time: Nov 21 07:13:14 2020  
 Quant Method : Z:\pestpcbsrv\HPCHEM1\FID\_C\Method\Alaphatic EPH 110220.M  
 Quant Title : GC Extractables  
 QLast Update : Tue Nov 03 02:36:40 2020  
 Response via : Initial Calibration  
 Integrator: ChemStation 6890 Scale Mode: Large solvent peaks clipped

Volume Inj. : 1 ul  
 Signal Phase : Rxi-1ms  
 Signal Info : 20M x 0.18mm x 0.18um

Compound	R.T.	Response	Conc Units
-----			
System Monitoring Compounds			
9) S ortho-Terphenyl (SURR)	11.604	3425840	27.891 ug/ml
Spiked Amount	50.000	Recovery	= 55.78%
12) S 1-chlorooctadecane (S...	13.038	2745475	28.436 ug/ml
Spiked Amount	50.000	Recovery	= 56.87%
Target Compounds			
6) T n-Tetradecane (C14)	8.207f	817789	7.582 ug/ml
-----			

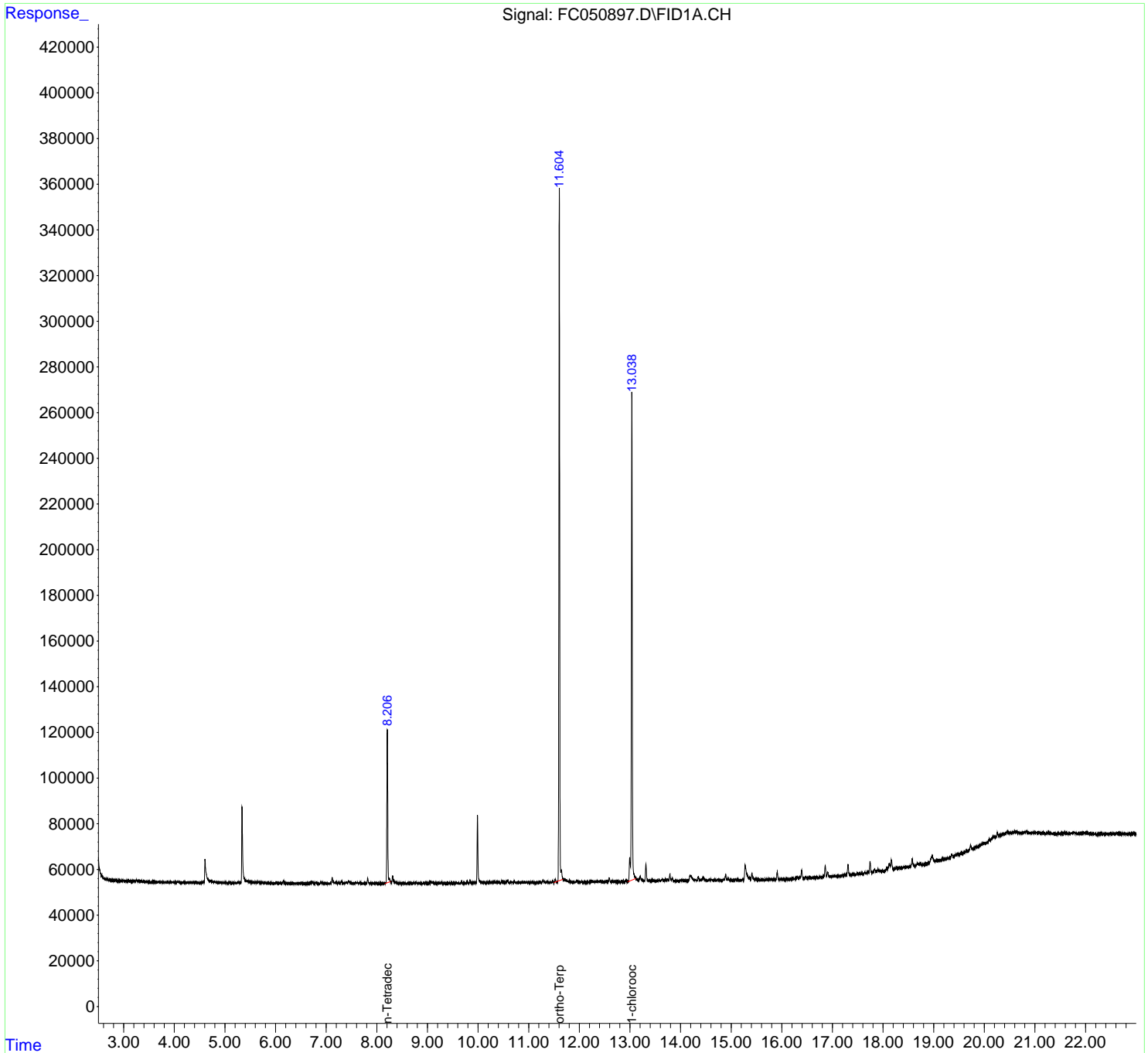
(f)=RT Delta > 1/2 Window

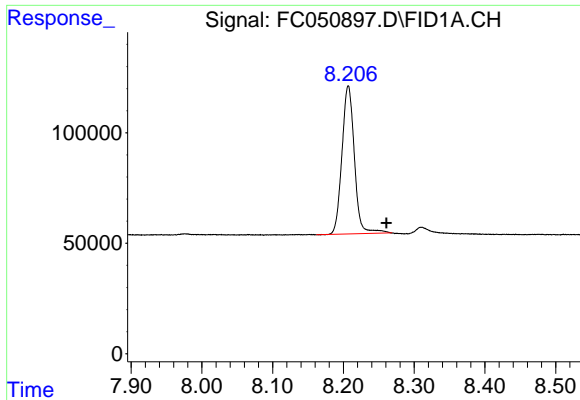
(m)=manual int.

Data Path : Z:\pestpcbsrv\HPCHEM1\FID\_C\Data\FC112020AL\  
Data File : FC050897.D  
Signal(s) : FID1A.CH  
Acq On : 21 Nov 2020 4:15  
Operator : DD\AJ  
Sample : L4809-10  
Misc :  
ALS Vial : 21 Sample Multiplier: 1

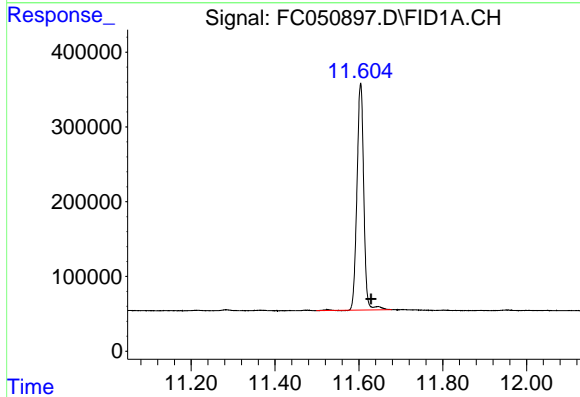
Integration File: autoint1.e  
Quant Time: Nov 21 07:13:14 2020  
Quant Method : Z:\pestpcbsrv\HPCHEM1\FID\_C\Method\Alaphatic EPH 110220.M  
Quant Title : GC Extractables  
QLast Update : Tue Nov 03 02:36:40 2020  
Response via : Initial Calibration  
Integrator: ChemStation 6890 Scale Mode: Large solvent peaks clipped

Volume Inj. : 1 ul  
Signal Phase : Rxi-1ms  
Signal Info : 20M x 0.18mm x 0.18um

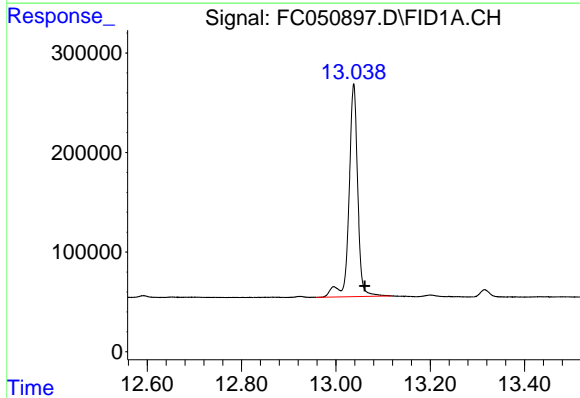




#6 n-Tetradecane (C14)  
 R.T.: 8.207 min  
 Delta R.T.: -0.054 min  
 Response: 817789  
 Conc: 7.58 ug/ml



#9 ortho-Terphenyl (SURR)  
 R.T.: 11.604 min  
 Delta R.T.: -0.025 min  
 Response: 3425840  
 Conc: 27.89 ug/ml



#12 1-chlorooctadecane (SURR)  
 R.T.: 13.038 min  
 Delta R.T.: -0.024 min  
 Response: 2745475  
 Conc: 28.44 ug/ml