

Data Path : Z:\pestpcbsrv\HPCHEM1\FID_D\Data\FD112020AL\
 Data File : FD035607.D
 Signal(s) : FID2B.CH
 Acq On : 21 Nov 2020 7:21
 Operator : DD\AJ
 Sample : L4832-02
 Misc :
 ALS Vial : 76 Sample Multiplier: 1

Integration File: autoint1.e
 Quant Time: Nov 21 11:05:53 2020
 Quant Method : Z:\pestpcbsrv\HPCHEM1\FID_D\methods\Alaphatic EPH 110220.M
 Quant Title : GC Extractables
 QLast Update : Tue Nov 03 11:48:08 2020
 Response via : Initial Calibration
 Integrator: ChemStation 6890 Scale Mode: Large solvent peaks clipped

Volume Inj. : 1 ul
 Signal Phase : Rxi-1ms
 Signal Info : 20M x 0.18mm x 0.18um

Compound	R.T.	Response	Conc Units

System Monitoring Compounds			
9) S ortho-Terphenyl (SURR)	11.522	4716250	36.255 ug/ml
Spiked Amount	50.000	Recovery	= 72.51%
12) S 1-chlorooctadecane (S...	12.953	3758994	36.068 ug/ml
Spiked Amount	50.000	Recovery	= 72.14%
Target Compounds			
6) T n-Tetradecane (C14)	8.237	320254	2.781 ug/ml

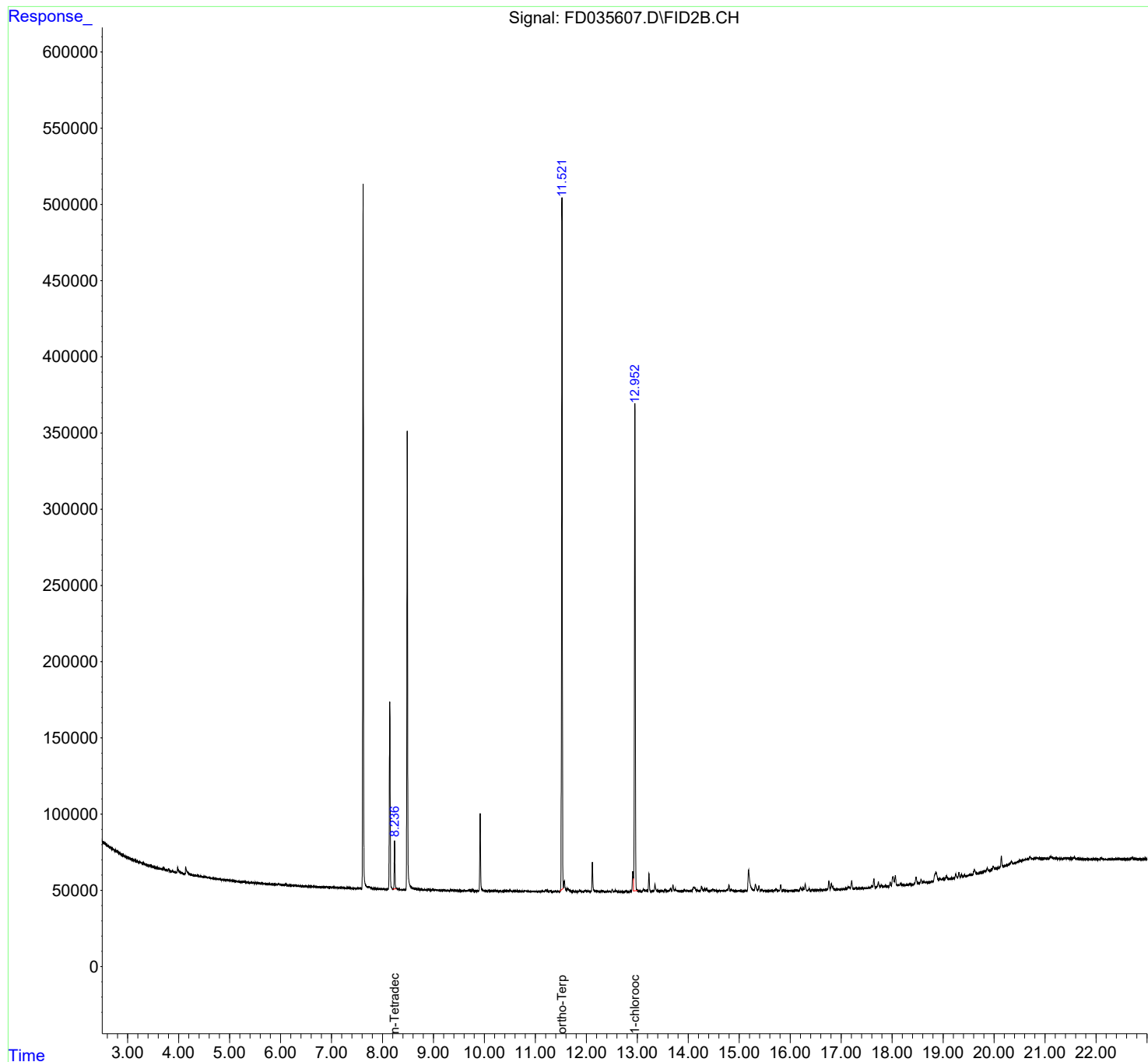
(f)=RT Delta > 1/2 Window

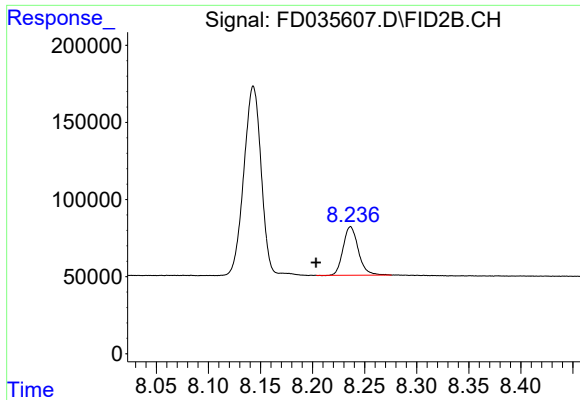
(m)=manual int.

Data Path : Z:\pestpcbsrv\HPCHEM1\FID_D\Data\FD112020AL\
Data File : FD035607.D
Signal(s) : FID2B.CH
Acq On : 21 Nov 2020 7:21
Operator : DD\AJ
Sample : L4832-02
Misc :
ALS Vial : 76 Sample Multiplier: 1

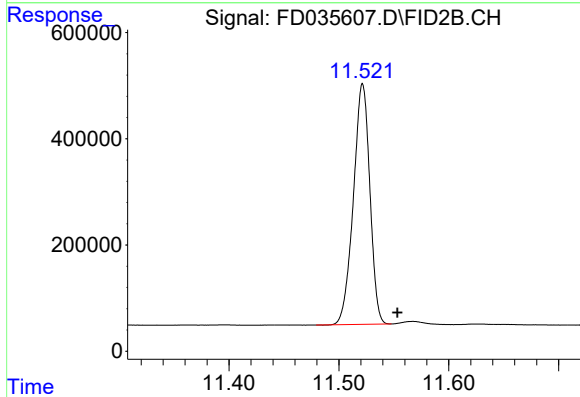
Integration File: autoint1.e
Quant Time: Nov 21 11:05:53 2020
Quant Method : Z:\pestpcbsrv\HPCHEM1\FID_D\methods\Alaphatic EPH 110220.M
Quant Title : GC Extractables
QLast Update : Tue Nov 03 11:48:08 2020
Response via : Initial Calibration
Integrator: ChemStation 6890 Scale Mode: Large solvent peaks clipped

Volume Inj. : 1 ul
Signal Phase : Rxi-1ms
Signal Info : 20M x 0.18mm x 0.18um

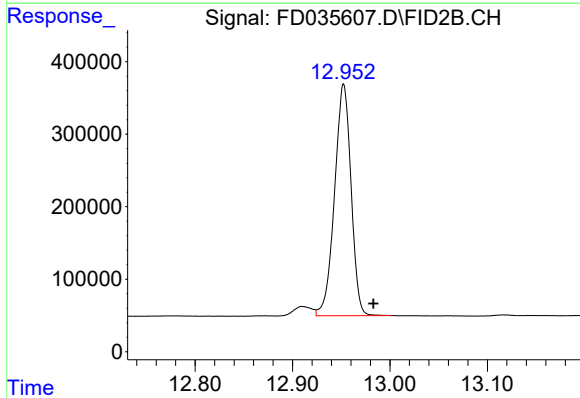




#6 n-Tetradecane (C14)
R.T.: 8.237 min
Delta R.T.: 0.033 min
Response: 320254
Conc: 2.78 ug/ml



#9 ortho-Terphenyl (SURR)
R.T.: 11.522 min
Delta R.T.: -0.032 min
Response: 4716250
Conc: 36.25 ug/ml



#12 1-chlorooctadecane (SURR)
R.T.: 12.953 min
Delta R.T.: -0.031 min
Response: 3758994
Conc: 36.07 ug/ml