

Data Path : Z:\pestpcbsrv\HPCHEM1\FID_C\Data\FC112021AL\
 Data File : FC056978.D
 Signal(s) : FID1A.CH
 Acq On : 20 Nov 2021 14:04
 Operator : AJ\MA
 Sample : M4762-06
 Misc :
 ALS Vial : 39 Sample Multiplier: 1

Integration File: sample.E
 Quant Time: Nov 22 00:22:40 2021
 Quant Method : Z:\pestpcbsrv\HPCHEM1\FID_C\Method\Aliphatic EPH 111921.M
 Quant Title : GC Extractables
 QLast Update : Fri Nov 19 00:52:49 2021
 Response via : Initial Calibration
 Integrator: ChemStation 6890 Scale Mode: Large solvent peaks clipped

Volume Inj. : 1 ul
 Signal Phase : Rxi-1ms
 Signal Info : 20M x 0.18mm x 0.18um

Compound	R.T.	Response	Conc Units

System Monitoring Compounds			
9) S ortho-Terphenyl (SURR)	11.604	6686305	57.617 ug/mlm
Spiked Amount	50.000	Recovery	= 115.23%
12) S 1-chlorooctadecane (S...	13.035	4916350	54.004 ug/mlm
Spiked Amount	50.000	Recovery	= 108.01%

Target Compounds

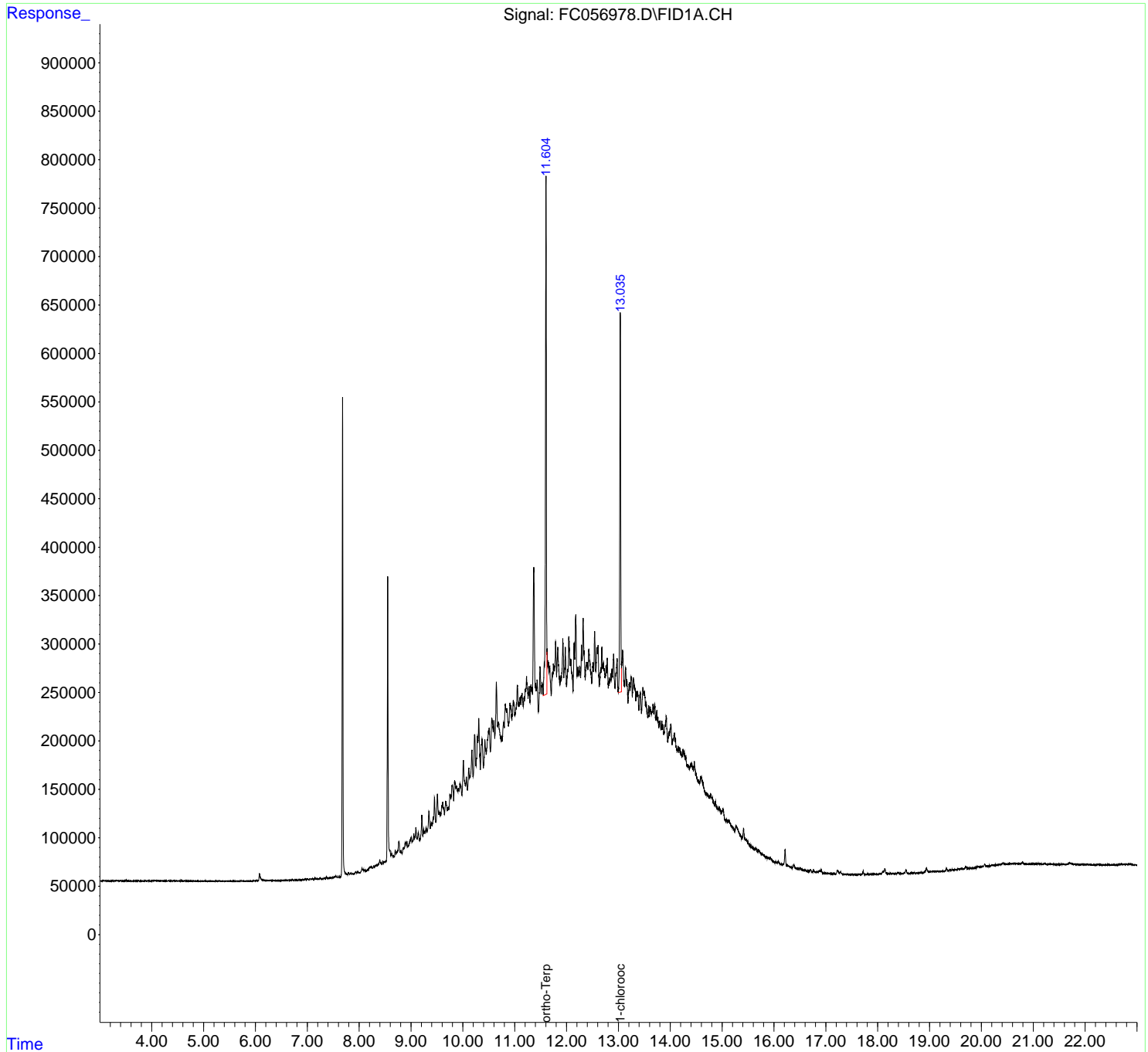
(f)=RT Delta > 1/2 Window

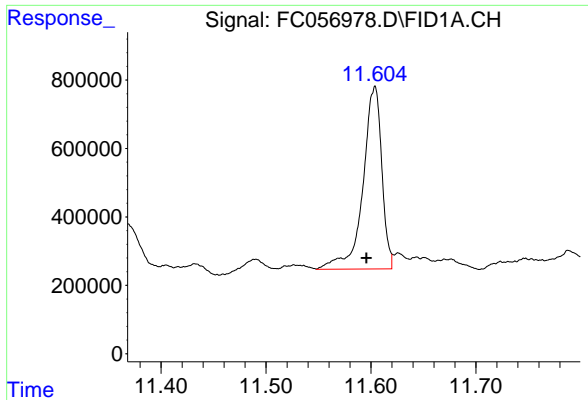
(m)=manual int.

Data Path : Z:\pestpcbsrv\HPCHEM1\FID_C\Data\FC112021AL\
Data File : FC056978.D
Signal(s) : FID1A.CH
Acq On : 20 Nov 2021 14:04
Operator : AJ\MA
Sample : M4762-06
Misc :
ALS Vial : 39 Sample Multiplier: 1

Integration File: sample.E
Quant Time: Nov 22 00:22:40 2021
Quant Method : Z:\pestpcbsrv\HPCHEM1\FID_C\Method\Aliphatic EPH 111921.M
Quant Title : GC Extractables
QLast Update : Fri Nov 19 00:52:49 2021
Response via : Initial Calibration
Integrator: ChemStation 6890 Scale Mode: Large solvent peaks clipped

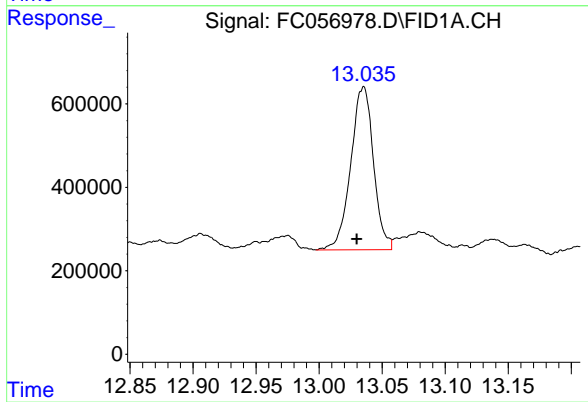
Volume Inj. : 1 ul
Signal Phase : Rxi-1ms
Signal Info : 20M x 0.18mm x 0.18um





#9 ortho-Terphenyl (SURR)

R.T.: 11.604 min
Delta R.T.: 0.008 min
Response: 6686305
Conc: 57.62 ug/ml m



#12 1-chlorooctadecane (SURR)

R.T.: 13.035 min
Delta R.T.: 0.005 min
Response: 4916350
Conc: 54.00 ug/ml m