

Data Path : Z:\pestpcbsrv\HPCHEM1\FID_C\Data\FC112124AL\
 Data File : FC067842.D
 Signal(s) : FID1A.ch
 Acq On : 21 Nov 2024 12:31
 Operator : YP/AJ
 Sample : PB165151BSD
 Misc :
 ALS Vial : 13 Sample Multiplier: 1

Instrument :
 FID_C
ClientSampleId :
 PB165151BSD

Manual Integrations
APPROVED
 Reviewed By :Yogesh Patel 11/22/2024
 Supervised By :Ankita Jodhani 11/22/2024

Integration File: autoint1.e
 Quant Time: Nov 22 00:24:50 2024
 Quant Method : Z:\pestpcbsrv\HPCHEM1\FID_C\Method\Aliphatic EPH 111424.M
 Quant Title : GC Extractables
 QLast Update : Thu Nov 14 14:13:15 2024
 Response via : Initial Calibration
 Integrator: ChemStation

Volume Inj. : 1 ul
 Signal Phase : Rxi-1ms
 Signal Info : 20M x 0.18mm x 0.18um

Compound	R.T.	Response	Conc Units

System Monitoring Compounds			
12) S 1-chlorooctadecane (S...	12.942	5218311	35.948 ug/ml
Spiked Amount 50.000		Recovery =	71.90%
Target Compounds			
1) T n-Nonane (C9)	3.287	3632051	22.267 ug/ml
2) T n-Decane (C10)	4.350	4649561	28.038 ug/ml
4) T n-Dodecane (C12)	6.364	5619591	33.365 ug/ml
6) T n-Tetradecane (C14)	8.155	6078205	36.294 ug/ml
7) T n-Hexadecane (C16)	9.754	6351994	36.654 ug/ml
8) T n-Octadecane (C18)	11.193	6656132	37.832 ug/ml
10) T n-Eicosane (C20)	12.501	7024272	41.715 ug/ml
11) T n-Heneicosane (C21)	13.112	6746939	41.005 ug/ml
13) T n-Docosane (C22)	13.697	6673330	40.978 ug/ml
14) T n-Tetracosane (C24)	14.797	6414361	39.994 ug/mlm
15) T n-Hexacosane (C26)	15.815	6140507	39.652 ug/mlm
16) T n-Octacosane (C28)	16.765	6019776	39.860 ug/ml
17) T n-Tricontane (C30)	17.650	5918891	38.658 ug/ml
18) T n-Dotriacontane (C32)	18.480	5765435	39.037 ug/ml
19) T n-Tetratriacontane (C34)	19.265	5562918	44.105 ug/ml
20) T n-Hexatriacontane (C36)	20.001	5325280	50.917 ug/mlm
21) T n-Octatriacontane (C38)	20.725	5223971	53.478 ug/ml
22) T n-Tetracontane (C40)	21.614	5480116	56.226 ug/ml

(f)=RT Delta > 1/2 Window

(m)=manual int.

Data Path : Z:\pestpcbsrv\HPCHEM1\FID_C\Data\FC112124AL\
 Data File : FC067842.D
 Signal(s) : FID1A.ch
 Acq On : 21 Nov 2024 12:31
 Operator : YP/AJ
 Sample : PB165151BSD
 Misc :
 ALS Vial : 13 Sample Multiplier: 1

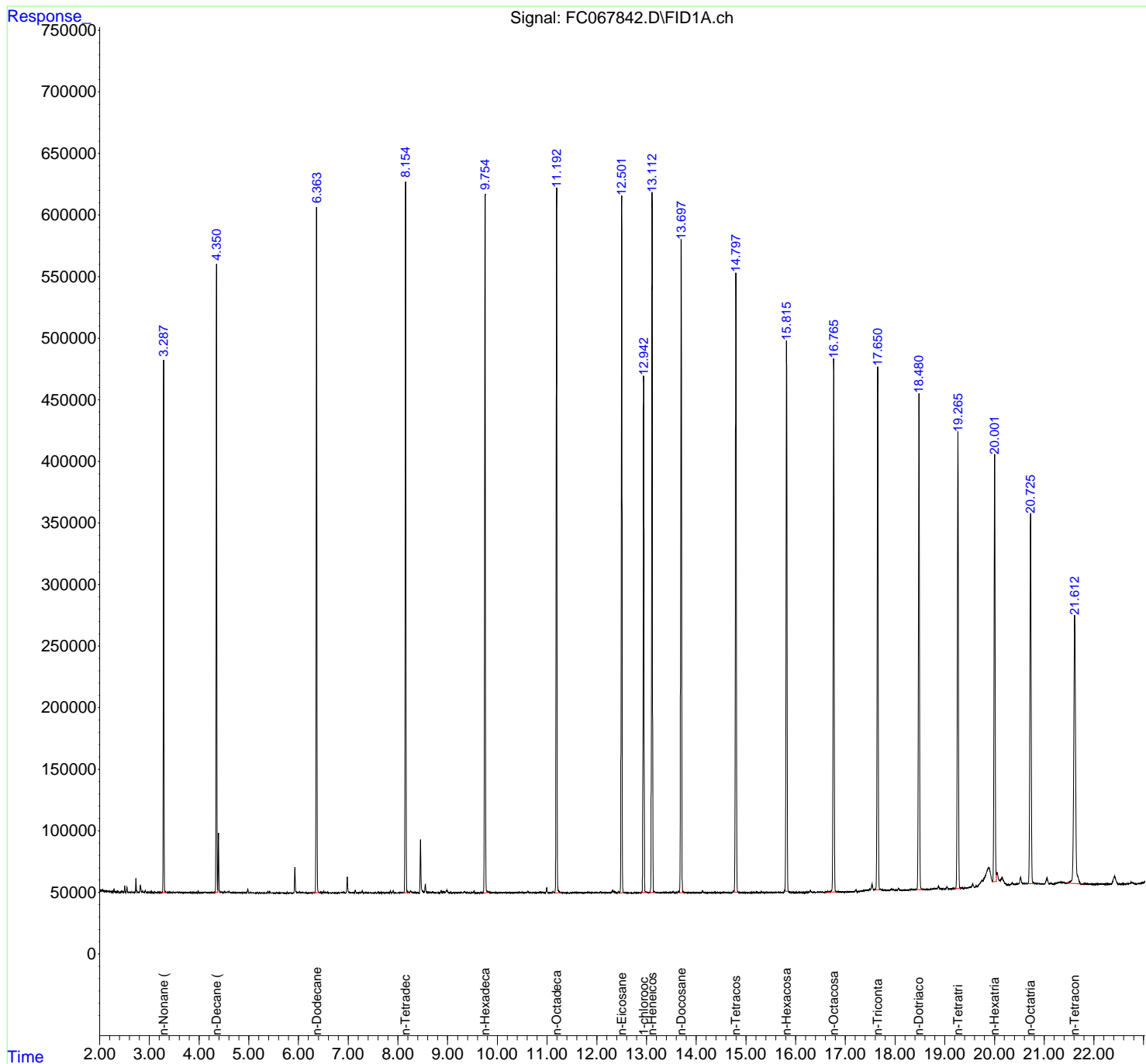
Instrument :
 FID_C
ClientSampleId :
 PB165151BSD

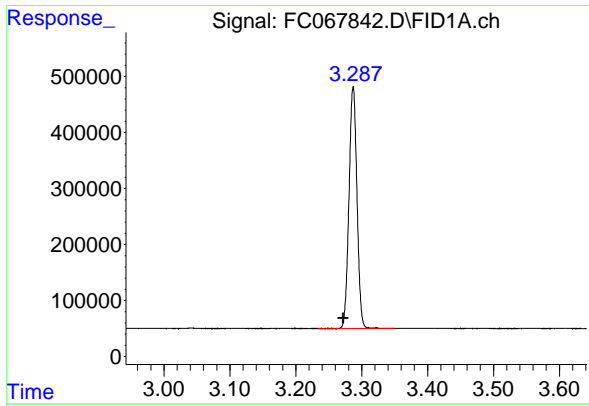
Manual Integrations
APPROVED

Reviewed By :Yogesh Patel 11/22/2024
 Supervised By :Ankita Jodhani 11/22/2024

Integration File: autoint1.e
 Quant Time: Nov 22 00:24:50 2024
 Quant Method : Z:\pestpcbsrv\HPCHEM1\FID_C\Method\Aliphatic EPH 111424.M
 Quant Title : GC Extractables
 QLast Update : Thu Nov 14 14:13:15 2024
 Response via : Initial Calibration
 Integrator: ChemStation

Volume Inj. : 1 ul
 Signal Phase : Rxi-1ms
 Signal Info : 20M x 0.18mm x 0.18um





#1 n-Nonane (C9)

R.T.: 3.287 min
 Delta R.T.: 0.015 min
 Response: 3632051
 Conc: 22.27 ug/ml

Instrument :

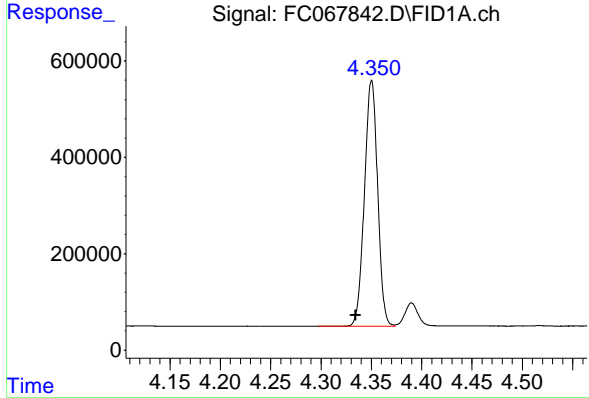
FID_C

Client Sample Id :

PB165151BSD

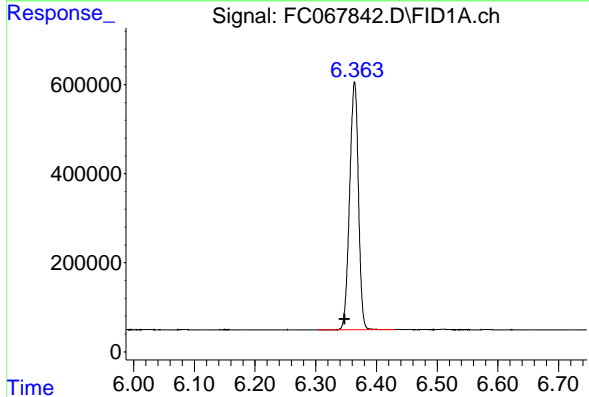
Manual Integrations
 APPROVED

Reviewed By :Yogesh Patel 11/22/2024
 Supervised By :Ankita Jodhani 11/22/2024



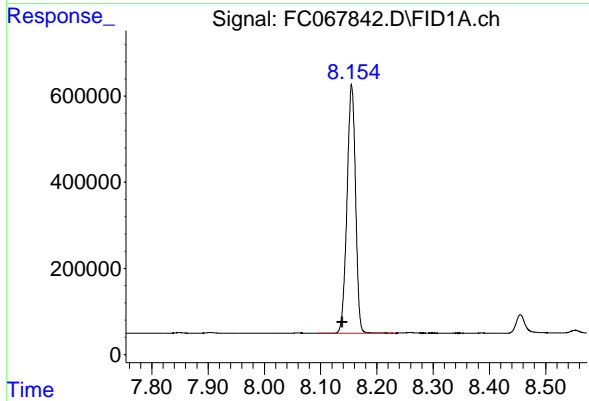
#2 n-Decane (C10)

R.T.: 4.350 min
 Delta R.T.: 0.016 min
 Response: 4649561
 Conc: 28.04 ug/ml



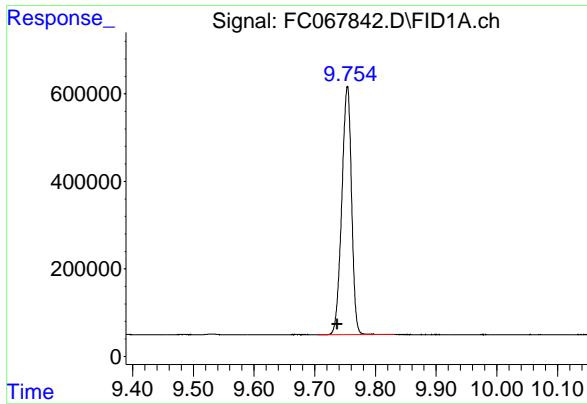
#4 n-Dodecane (C12)

R.T.: 6.364 min
 Delta R.T.: 0.016 min
 Response: 5619591
 Conc: 33.36 ug/ml



#6 n-Tetradecane (C14)

R.T.: 8.155 min
 Delta R.T.: 0.016 min
 Response: 6078205
 Conc: 36.29 ug/ml



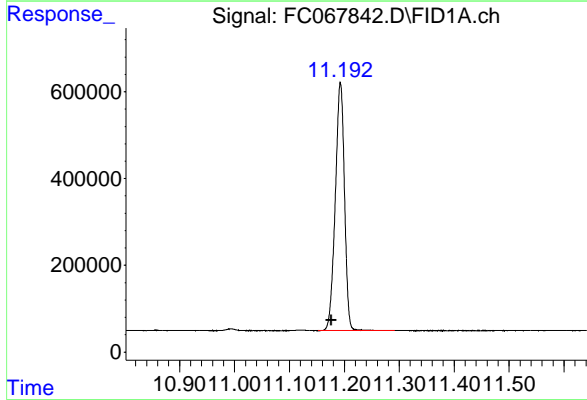
#7 n-Hexadecane (C16)

R.T.: 9.754 min
 Delta R.T.: 0.016 min
 Response: 6351994
 Conc: 36.65 ug/ml

Instrument : FID_C
 Client Sample Id : PB165151BSD

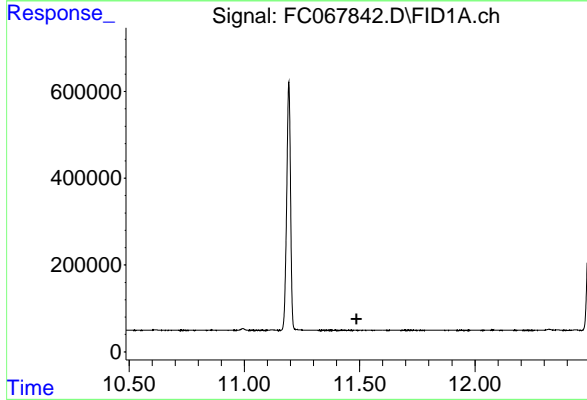
Manual Integrations
 APPROVED

Reviewed By :Yogesh Patel 11/22/2024
 Supervised By :Ankita Jodhani 11/22/2024



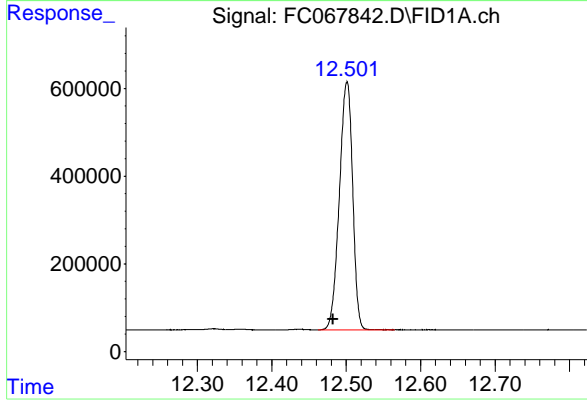
#8 n-Octadecane (C18)

R.T.: 11.193 min
 Delta R.T.: 0.017 min
 Response: 6656132
 Conc: 37.83 ug/ml



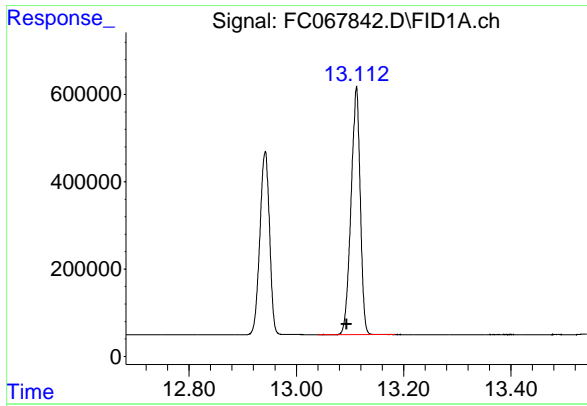
#9 ortho-Terphenyl (SURR)

R.T.: 0.000 min
 Exp R.T. : 11.486 min
 Response: 0
 Conc: N.D.



#10 n-Eicosane (C20)

R.T.: 12.501 min
 Delta R.T.: 0.019 min
 Response: 7024272
 Conc: 41.72 ug/ml



#11 n-Heneicosane (C21)

R.T.: 13.112 min
 Delta R.T.: 0.018 min
 Response: 6746939
 Conc: 41.01 ug/ml

Instrument :

FID_C

Client Sample Id :

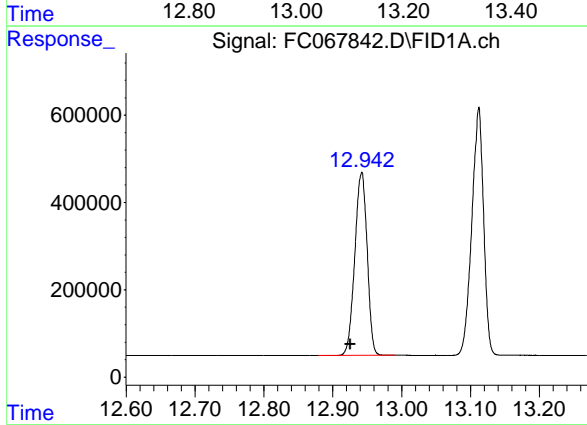
PB165151BSD

Manual Integrations

APPROVED

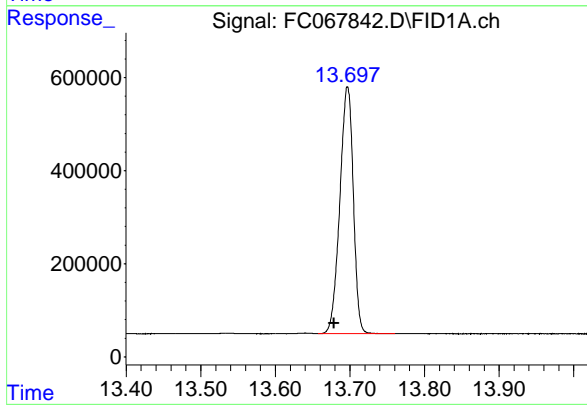
Reviewed By :Yogesh Patel 11/22/2024

Supervised By :Ankita Jodhani 11/22/2024



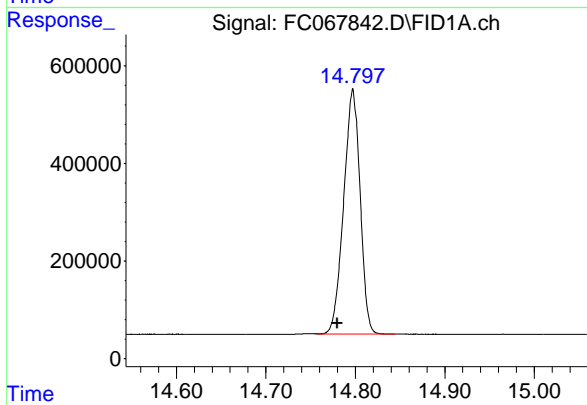
#12 1-chlorooctadecane (SURRE)

R.T.: 12.942 min
 Delta R.T.: 0.016 min
 Response: 5218311
 Conc: 35.95 ug/ml



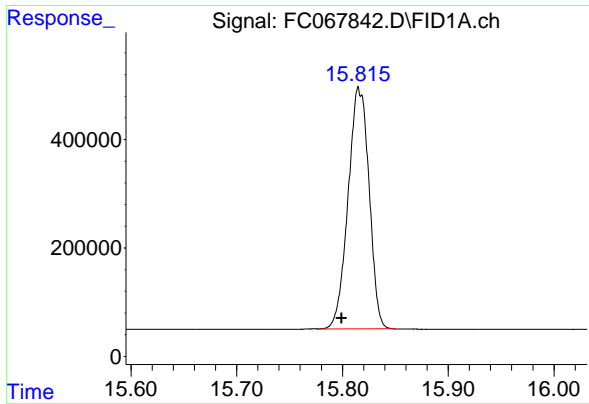
#13 n-Docosane (C22)

R.T.: 13.697 min
 Delta R.T.: 0.018 min
 Response: 6673330
 Conc: 40.98 ug/ml



#14 n-Tetracosane (C24)

R.T.: 14.797 min
 Delta R.T.: 0.017 min
 Response: 6414361
 Conc: 39.99 ug/ml m



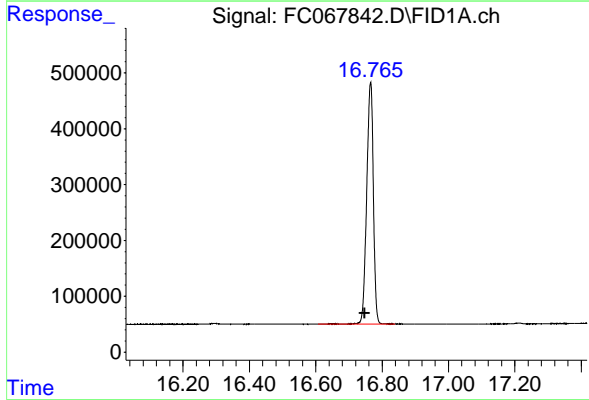
#15 n-Hexacosane (C26)

R.T.: 15.815 min
 Delta R.T.: 0.015 min
 Response: 6140507
 Conc: 39.65 ug/ml

Instrument : FID_C
 Client Sample Id : PB165151BSD

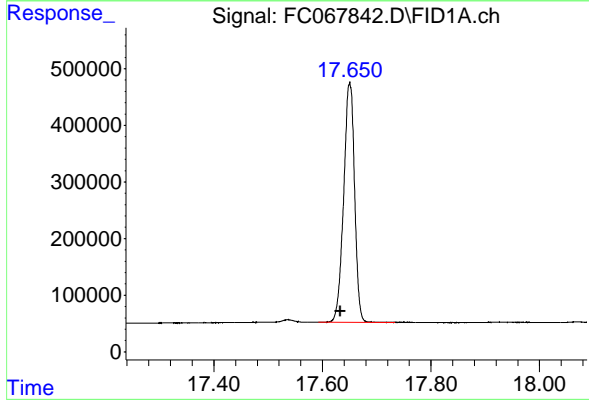
Manual Integrations
 APPROVED

Reviewed By :Yogesh Patel 11/22/2024
 Supervised By :Ankita Jodhani 11/22/2024



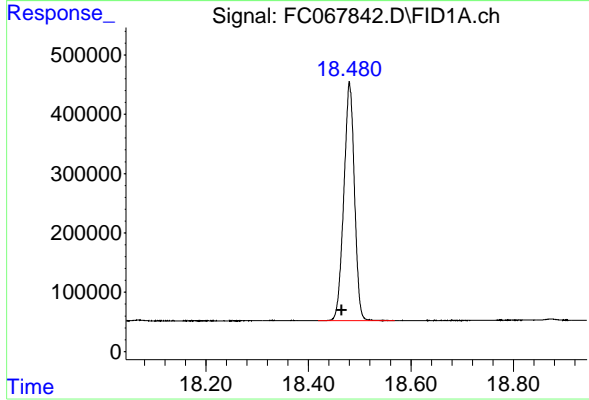
#16 n-Octacosane (C28)

R.T.: 16.765 min
 Delta R.T.: 0.018 min
 Response: 6019776
 Conc: 39.86 ug/ml



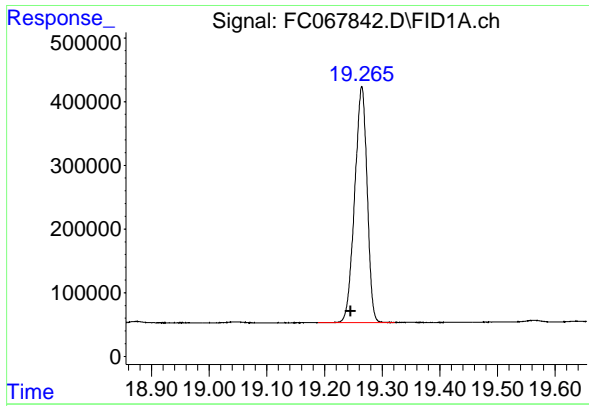
#17 n-Tricontane (C30)

R.T.: 17.650 min
 Delta R.T.: 0.017 min
 Response: 5918891
 Conc: 38.66 ug/ml



#18 n-Dotriacontane (C32)

R.T.: 18.480 min
 Delta R.T.: 0.015 min
 Response: 5765435
 Conc: 39.04 ug/ml



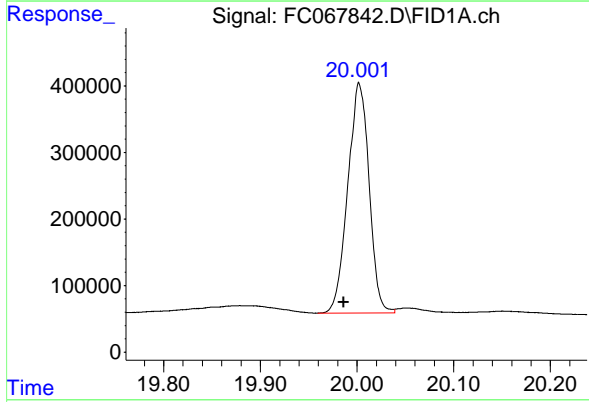
#19 n-Tetratriacontane (C34)

R.T.: 19.265 min
 Delta R.T.: 0.019 min
 Response: 5562918
 Conc: 44.10 ug/ml

Instrument : FID_C
 Client Sample Id : PB165151BSD

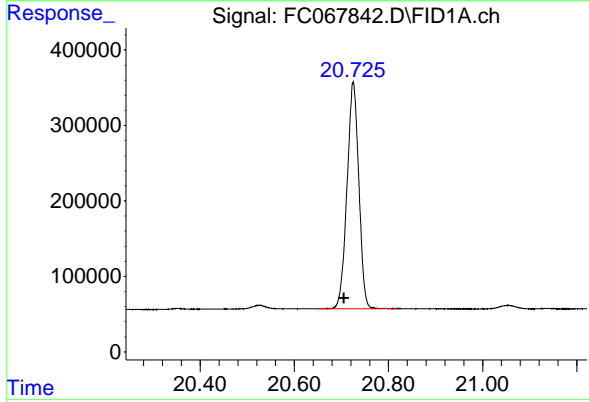
Manual Integrations
 APPROVED

Reviewed By :Yogesh Patel 11/22/2024
 Supervised By :Ankita Jodhani 11/22/2024



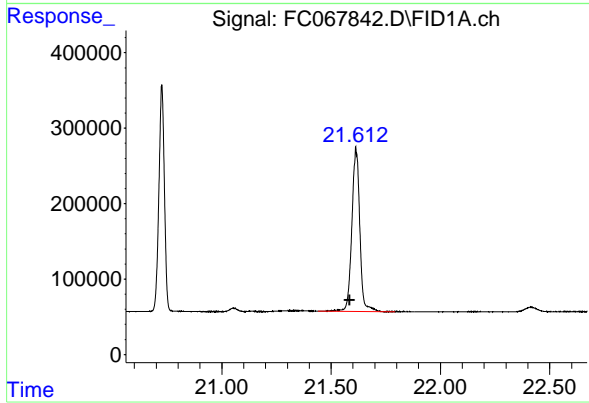
#20 n-Hexatriacontane (C36)

R.T.: 20.001 min
 Delta R.T.: 0.015 min
 Response: 5325280
 Conc: 50.92 ug/ml m



#21 n-Octatriacontane (C38)

R.T.: 20.725 min
 Delta R.T.: 0.020 min
 Response: 5223971
 Conc: 53.48 ug/ml



#22 n-Tetracontane (C40)

R.T.: 21.614 min
 Delta R.T.: 0.028 min
 Response: 5480116
 Conc: 56.23 ug/ml