

Data Path : Z:\pestpcbsrv\HPCHEM1\FID_C\Data\FC112221AL\
 Data File : FC057001.D
 Signal(s) : FID1A.CH
 Acq On : 22 Nov 2021 22:44
 Operator : AJ\MA
 Sample : M4798-09
 Misc :
 ALS Vial : 20 Sample Multiplier: 1

Instrument :
 FID_C
 ClientSampleId :

Integration File: autoint1.e
 Quant Time: Nov 23 00:12:38 2021
 Quant Method : Z:\pestpcbsrv\HPCHEM1\FID_C\Method\Aliphatic EPH 111921.M
 Quant Title : GC Extractables
 QLast Update : Fri Nov 19 00:52:49 2021
 Response via : Initial Calibration
 Integrator: ChemStation 6890 Scale Mode: Large solvent peaks clipped

Volume Inj. : 1 ul
 Signal Phase : Rxi-1ms
 Signal Info : 20M x 0.18mm x 0.18um

Compound	R.T.	Response	Conc Units

System Monitoring Compounds			
9) S ortho-Terphenyl (SURR)	11.613	13797018	118.892 ug/ml
Spiked Amount	50.000	Recovery	= 237.78%
12) S 1-chlorooctadecane (S...	13.036	6099011	66.994 ug/ml
Spiked Amount	50.000	Recovery	= 133.99%
Target Compounds			
2) T n-Decane (C10)	4.495f	279774	2.794 ug/ml
3) T A~Naphthalene (C11.7)	6.015	2666112	23.877 ug/ml
4) T n-Dodecane (C12)	6.429	2514407	24.799 ug/ml
5) T A~2-methylnaphthalene...	7.066	4544076	41.212 ug/ml
6) T n-Tetradecane (C14)	8.238	10080042	99.487 ug/ml
7) T n-Hexadecane (C16)	9.859	18817380	183.375 ug/ml
8) T n-Octadecane (C18)	11.285	7762269	72.451 ug/ml
10) T n-Eicosane (C20)	12.587	3710557	34.693 ug/ml
11) T n-Heneicosane (C21)	13.245	2883494	26.627 ug/ml
13) T n-Docosane (C22)	13.828	579004	5.404 ug/ml
16) T n-Octacosane (C28)	16.888	227187	2.130 ug/ml

(f)=RT Delta > 1/2 Window

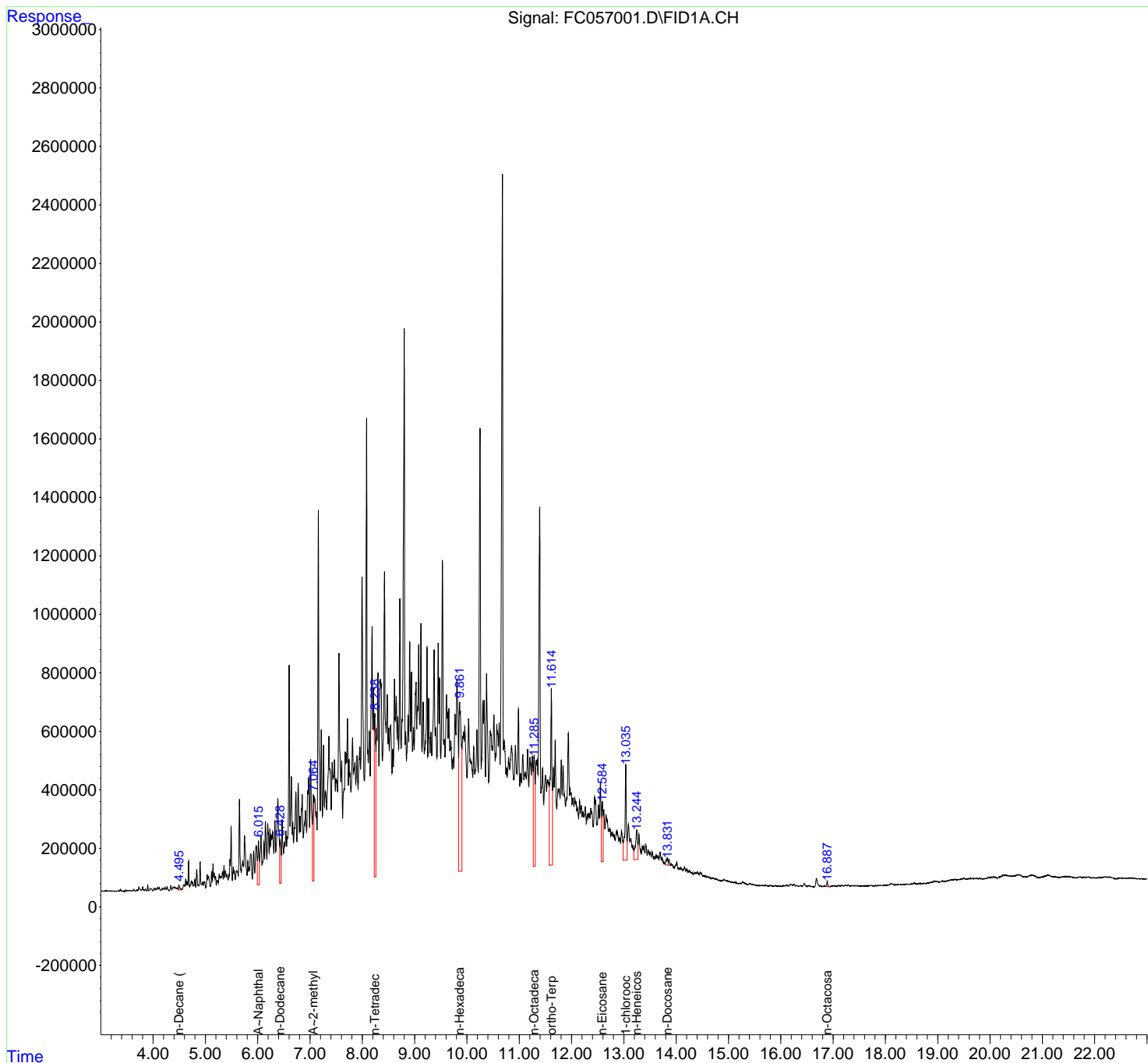
(m)=manual int.

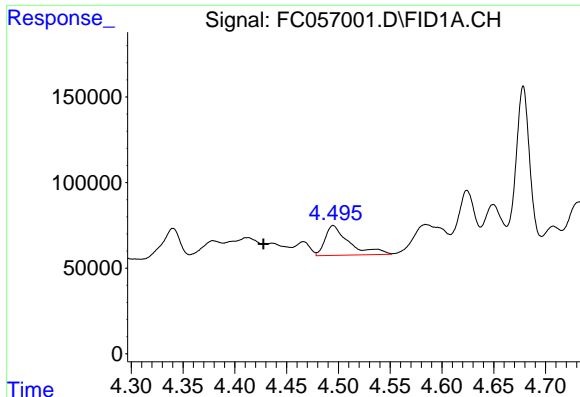
Data Path : Z:\pestpcbsrv\HPCHEM1\FID_C\Data\FC112221AL\
 Data File : FC057001.D
 Signal(s) : FID1A.CH
 Acq On : 22 Nov 2021 22:44
 Operator : AJ\MA
 Sample : M4798-09
 Misc :
 ALS Vial : 20 Sample Multiplier: 1

Instrument :
 FID_C
 ClientSampleId :

Integration File: autoint1.e
 Quant Time: Nov 23 00:12:38 2021
 Quant Method : Z:\pestpcbsrv\HPCHEM1\FID_C\Method\Aliphatic EPH 111921.M
 Quant Title : GC Extractables
 QLast Update : Fri Nov 19 00:52:49 2021
 Response via : Initial Calibration
 Integrator: ChemStation 6890 Scale Mode: Large solvent peaks clipped

Volume Inj. : 1 ul
 Signal Phase : Rxi-1ms
 Signal Info : 20M x 0.18mm x 0.18um

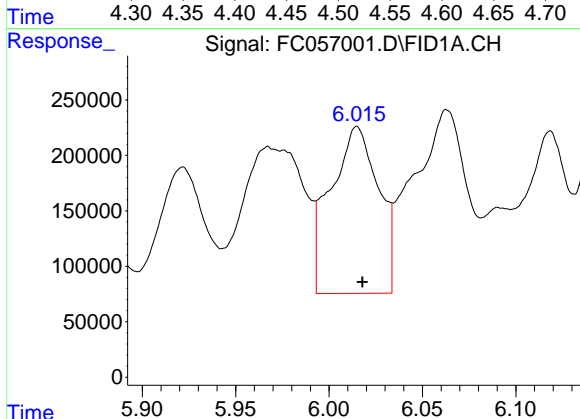




#2 n-Decane (C10)

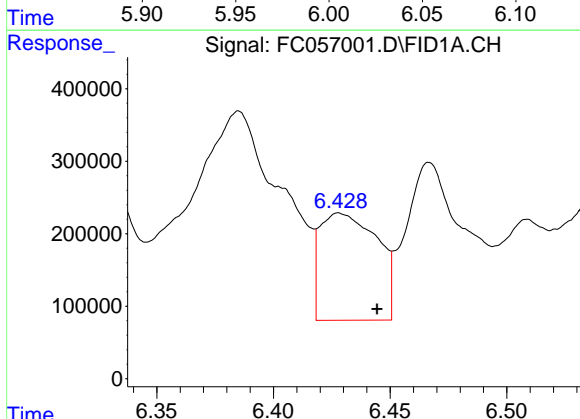
R.T.: 4.495 min
 Delta R.T.: 0.068 min
 Response: 279774
 Conc: 2.79 ug/ml

Instrument :
 FID_C
 ClientSampleId :



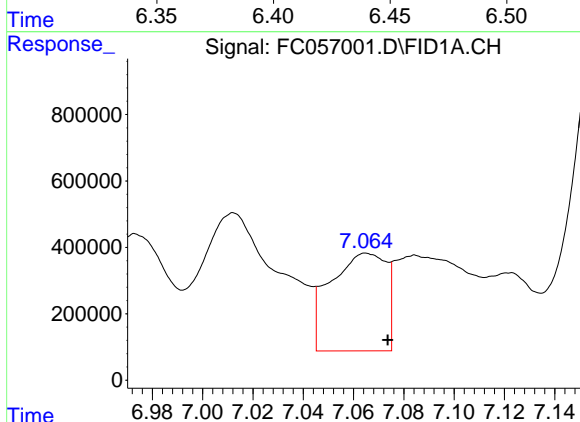
#3 A~Naphthalene (C11.7)

R.T.: 6.015 min
 Delta R.T.: -0.003 min
 Response: 2666112
 Conc: 23.88 ug/ml



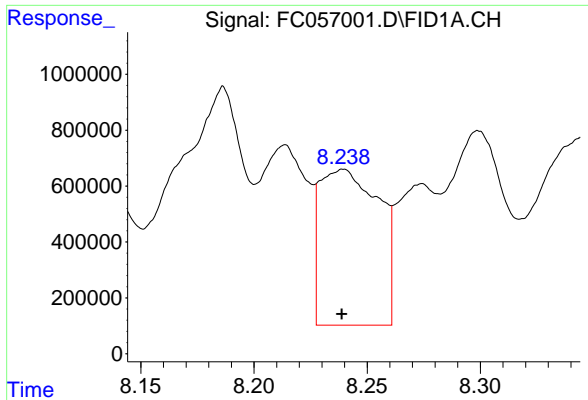
#4 n-Dodecane (C12)

R.T.: 6.429 min
 Delta R.T.: -0.016 min
 Response: 2514407
 Conc: 24.80 ug/ml



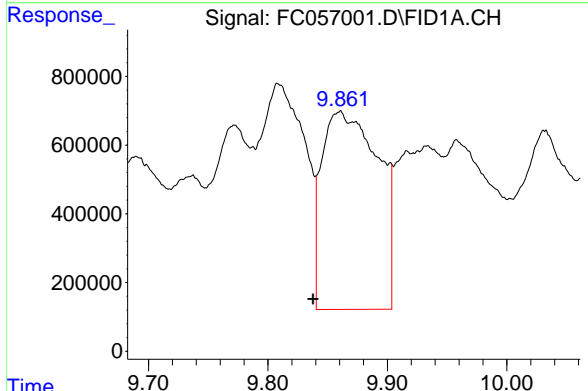
#5 A~2-methylnaphthalene (C12.89)

R.T.: 7.066 min
 Delta R.T.: -0.008 min
 Response: 4544076
 Conc: 41.21 ug/ml

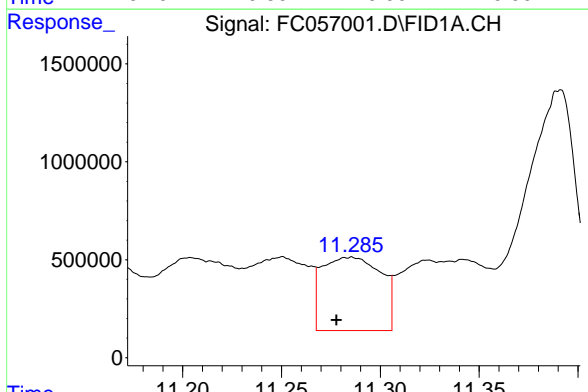


#6 n-Tetradecane (C14)
R.T.: 8.238 min
Delta R.T.: 0.000 min
Response: 10080042
Conc: 99.49 ug/ml

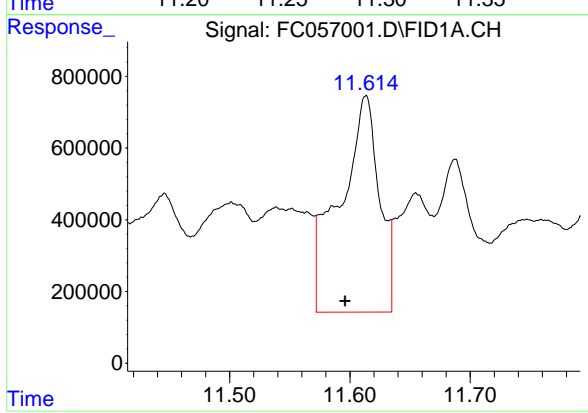
Instrument : FID_C
ClientSampleId :



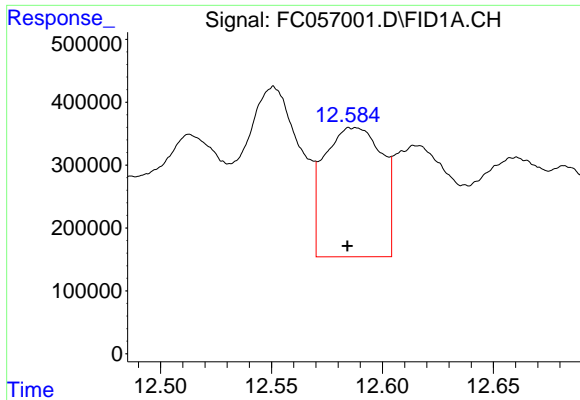
#7 n-Hexadecane (C16)
R.T.: 9.859 min
Delta R.T.: 0.022 min
Response: 18817380
Conc: 183.38 ug/ml



#8 n-Octadecane (C18)
R.T.: 11.285 min
Delta R.T.: 0.007 min
Response: 7762269
Conc: 72.45 ug/ml



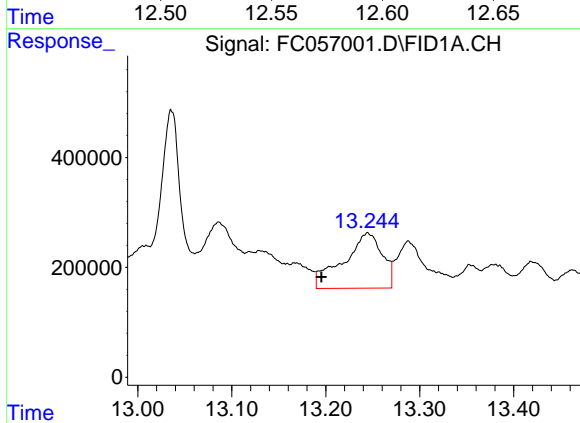
#9 ortho-Terphenyl (SURRE)
R.T.: 11.613 min
Delta R.T.: 0.017 min
Response: 13797018
Conc: 118.89 ug/ml



#10 n-Eicosane (C20)

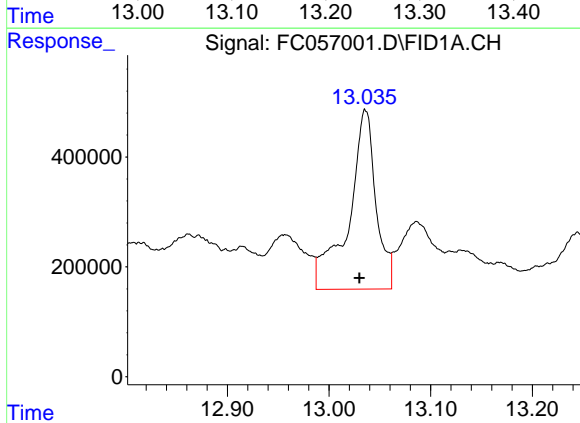
R.T.: 12.587 min
 Delta R.T.: 0.003 min
 Response: 3710557
 Conc: 34.69 ug/ml

Instrument :
 FID_C
 ClientSampleId :



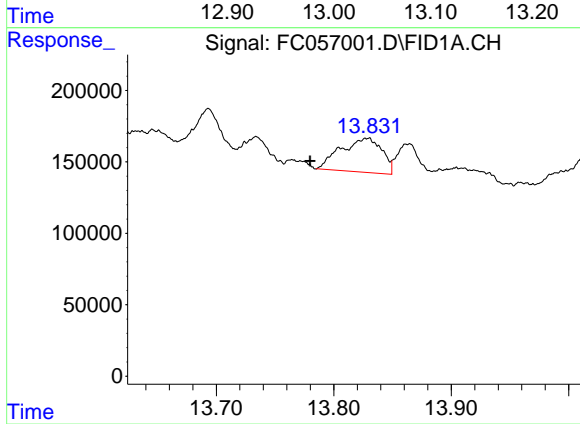
#11 n-Heneicosane (C21)

R.T.: 13.245 min
 Delta R.T.: 0.049 min
 Response: 2883494
 Conc: 26.63 ug/ml



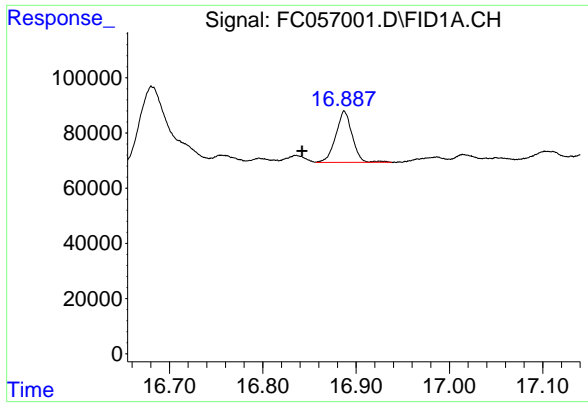
#12 1-chlorooctadecane (SURR)

R.T.: 13.036 min
 Delta R.T.: 0.006 min
 Response: 6099011
 Conc: 66.99 ug/ml



#13 n-Docosane (C22)

R.T.: 13.828 min
 Delta R.T.: 0.048 min
 Response: 579004
 Conc: 5.40 ug/ml



#16 n-Octacosane (C28)

R.T.: 16.888 min
Delta R.T.: 0.045 min
Response: 227187
Conc: 2.13 ug/ml

Instrument :
FID_C
ClientSampleId :