

Data Path : Z:\pestpcbsrv\HPCHEM1\FID_C\Data\FC112224AL\
 Data File : FC067850.D
 Signal(s) : FID1A.ch
 Acq On : 22 Nov 2024 11:32
 Operator : YP/AJ
 Sample : PB165188BS
 Misc :
 ALS Vial : 12 Sample Multiplier: 1

Instrument :
 FID_C
 ClientSampleId :

Integration File: autoint1.e
 Quant Time: Nov 22 22:21:05 2024
 Quant Method : Z:\pestpcbsrv\HPCHEM1\FID_C\Method\Aliphatic EPH 111424.M
 Quant Title : GC Extractables
 QLast Update : Thu Nov 14 14:13:15 2024
 Response via : Initial Calibration
 Integrator: ChemStation

Volume Inj. : 1 ul
 Signal Phase : Rxi-1ms
 Signal Info : 20M x 0.18mm x 0.18um

Compound	R.T.	Response	Conc Units

System Monitoring Compounds			
12) S 1-chlorooctadecane (S... Spiked Amount 50.000	12.943	5112489 Recovery =	35.219 ug/ml 70.44%
Target Compounds			
1) T n-Nonane (C9)	3.288	3763877	23.075 ug/ml
2) T n-Decane (C10)	4.350	4828464	29.117 ug/ml
3) T A~Naphthalene (C11.7)	5.928	208244	1.137 ug/ml
4) T n-Dodecane (C12)	6.364	5857295	34.776 ug/ml
5) T A~2-methylnaphthalene...	6.982	146509	0.826 ug/ml
6) T n-Tetradecane (C14)	8.156	6349870	37.916 ug/ml
7) T n-Hexadecane (C16)	9.754	6645242	38.346 ug/ml
8) T n-Octadecane (C18)	11.193	6923639	39.352 ug/ml
10) T n-Eicosane (C20)	12.501	7246643	43.036 ug/ml
11) T n-Heneicosane (C21)	13.112	6936142	42.155 ug/ml
13) T n-Docosane (C22)	13.697	6833014	41.958 ug/ml
14) T n-Tetracosane (C24)	14.798	6579576	41.024 ug/ml
15) T n-Hexacosane (C26)	15.818	6311220	40.754 ug/ml
16) T n-Octacosane (C28)	16.766	6119715	40.522 ug/ml
17) T n-Tricontane (C30)	17.652	6015860	39.291 ug/ml
18) T n-Dotriacontane (C32)	18.482	5827037	39.454 ug/ml
19) T n-Tetratriacontane (C34)	19.265	5678127	45.018 ug/ml
20) T n-Hexatriacontane (C36)	20.003	5380547	51.446 ug/ml
21) T n-Octatriacontane (C38)	20.727	5302072	54.278 ug/ml
22) T n-Tetracontane (C40)	21.617	5207527	53.429 ug/ml

(f)=RT Delta > 1/2 Window

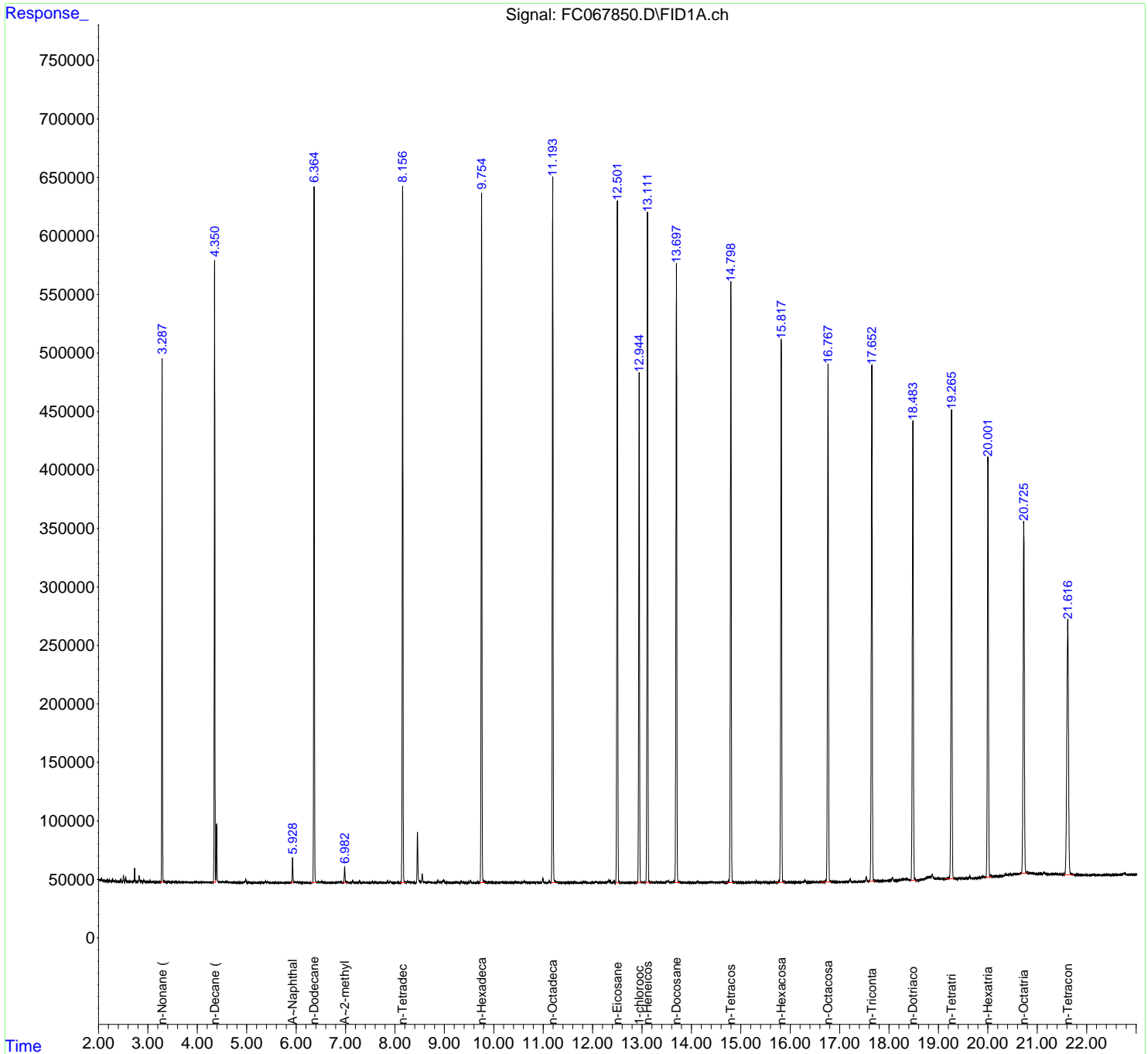
(m)=manual int.

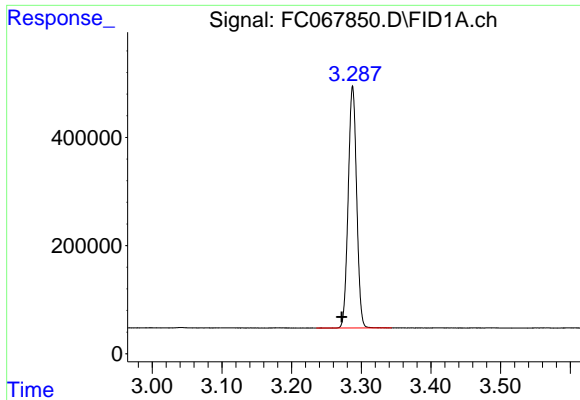
Data Path : Z:\pestpcbsrv\HPCHEM1\FID_C\Data\FC112224AL\
 Data File : FC067850.D
 Signal(s) : FID1A.ch
 Acq On : 22 Nov 2024 11:32
 Operator : YP/AJ
 Sample : PB165188BS
 Misc :
 ALS Vial : 12 Sample Multiplier: 1

Instrument :
 FID_C
 ClientSampleId :

Integration File: autoint1.e
 Quant Time: Nov 22 22:21:05 2024
 Quant Method : Z:\pestpcbsrv\HPCHEM1\FID_C\Method\Aliphatic EPH 111424.M
 Quant Title : GC Extractables
 QLast Update : Thu Nov 14 14:13:15 2024
 Response via : Initial Calibration
 Integrator: ChemStation

Volume Inj. : 1 ul
 Signal Phase : Rxi-1ms
 Signal Info : 20M x 0.18mm x 0.18um

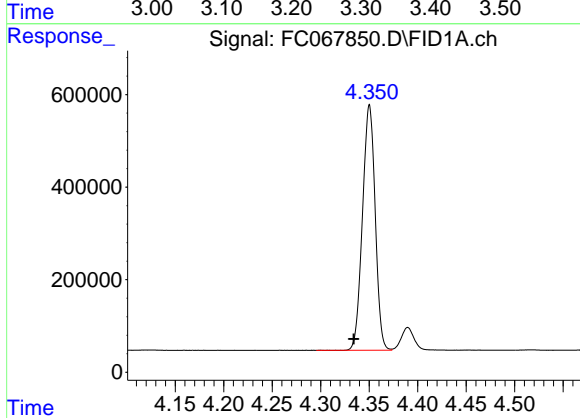




#1 n-Nonane (C9)

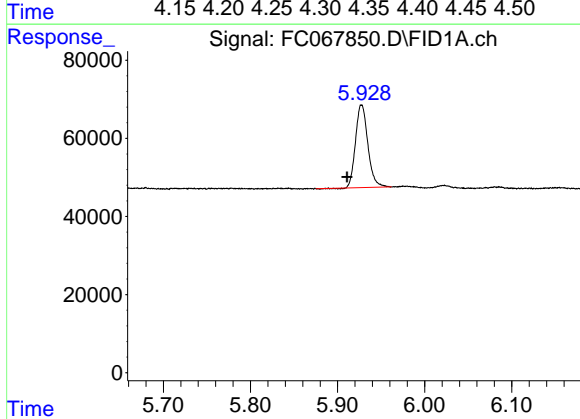
R.T.: 3.288 min
 Delta R.T.: 0.016 min
 Response: 3763877
 Conc: 23.08 ug/ml

Instrument :
 FID_C
 ClientSampleId :



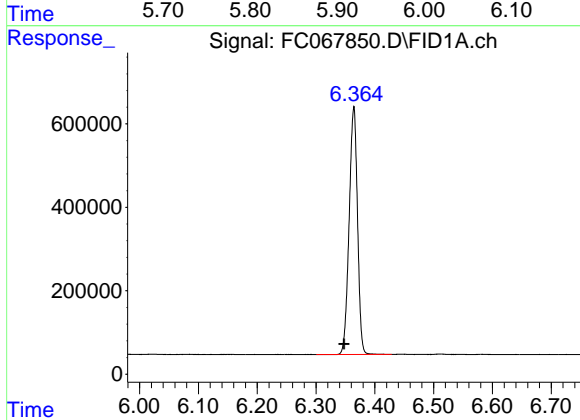
#2 n-Decane (C10)

R.T.: 4.350 min
 Delta R.T.: 0.016 min
 Response: 4828464
 Conc: 29.12 ug/ml



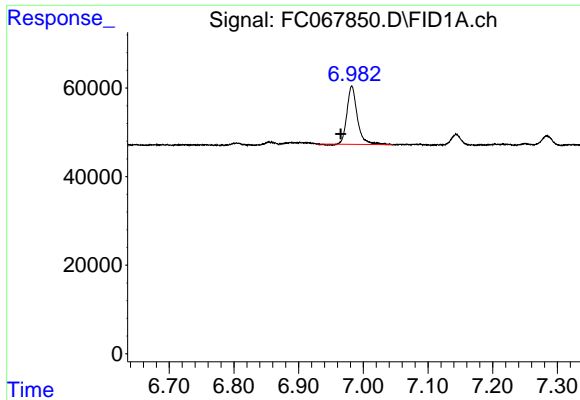
#3 A~Naphthalene (C11.7)

R.T.: 5.928 min
 Delta R.T.: 0.017 min
 Response: 208244
 Conc: 1.14 ug/ml



#4 n-Dodecane (C12)

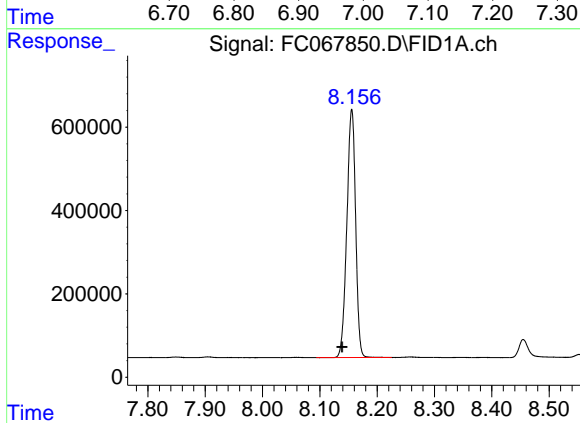
R.T.: 6.364 min
 Delta R.T.: 0.017 min
 Response: 5857295
 Conc: 34.78 ug/ml



#5 A~2-methylnaphthalene (C12.89)

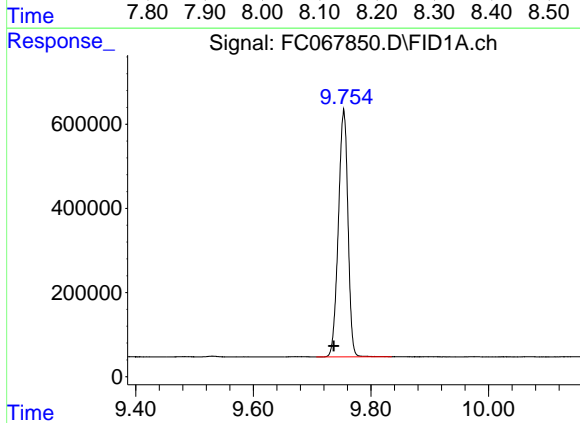
R.T.: 6.982 min
 Delta R.T.: 0.017 min
 Response: 146509
 Conc: 0.83 ug/ml

Instrument :
 FID_C
 ClientSampleId :



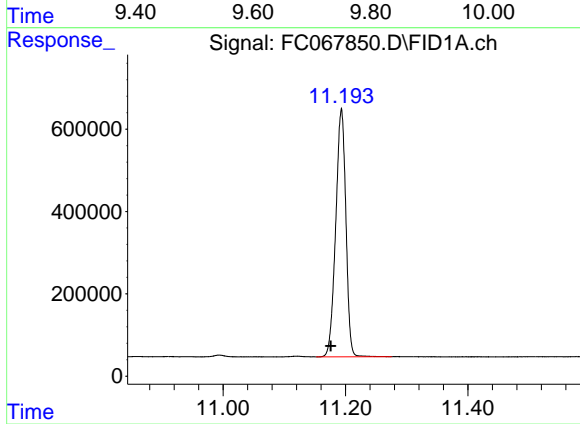
#6 n-Tetradecane (C14)

R.T.: 8.156 min
 Delta R.T.: 0.017 min
 Response: 6349870
 Conc: 37.92 ug/ml



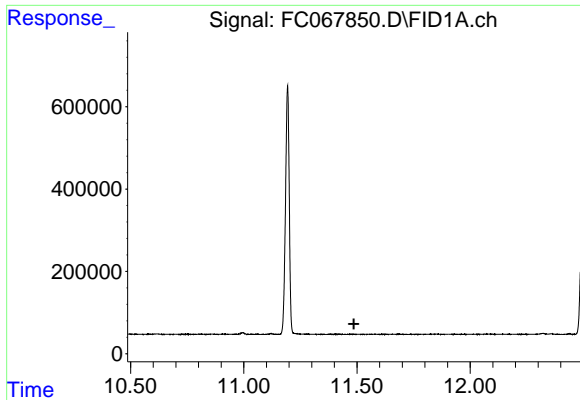
#7 n-Hexadecane (C16)

R.T.: 9.754 min
 Delta R.T.: 0.017 min
 Response: 6645242
 Conc: 38.35 ug/ml



#8 n-Octadecane (C18)

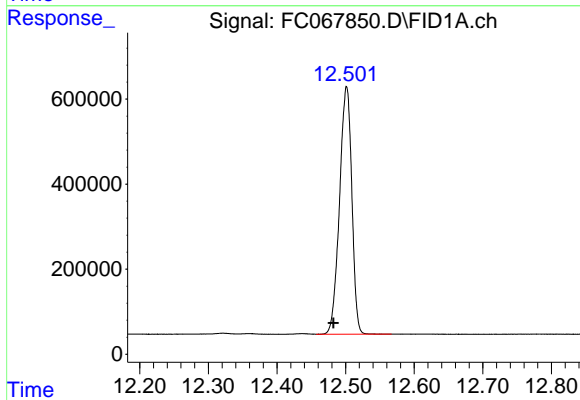
R.T.: 11.193 min
 Delta R.T.: 0.017 min
 Response: 6923639
 Conc: 39.35 ug/ml



#9 ortho-Terphenyl (SURR)

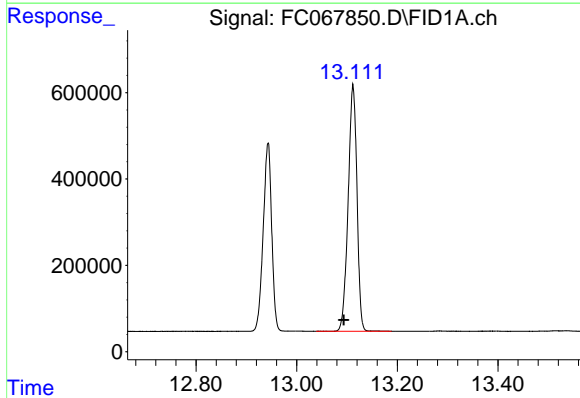
R.T.: 0.000 min
 Exp R.T.: 11.486 min
 Response: 0
 Conc: N.D.

Instrument :
 FID_C
 ClientSampleId :



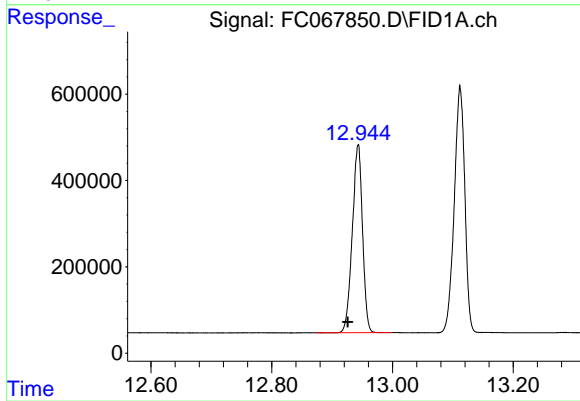
#10 n-Eicosane (C20)

R.T.: 12.501 min
 Delta R.T.: 0.019 min
 Response: 7246643
 Conc: 43.04 ug/ml



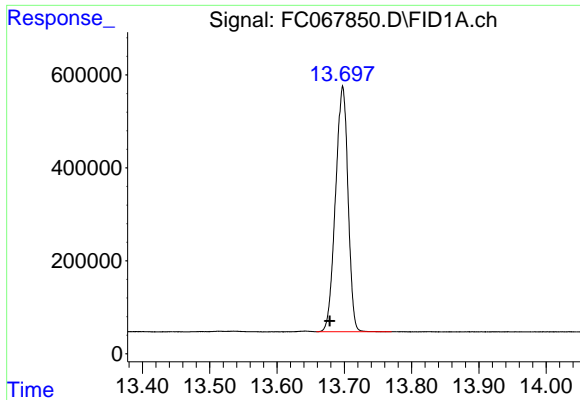
#11 n-Heneicosane (C21)

R.T.: 13.112 min
 Delta R.T.: 0.018 min
 Response: 6936142
 Conc: 42.16 ug/ml



#12 1-chlorooctadecane (SURR)

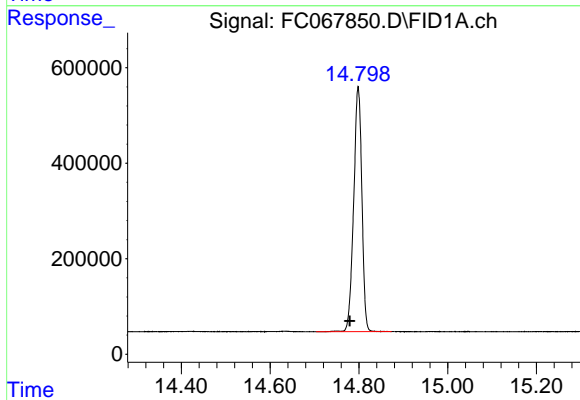
R.T.: 12.943 min
 Delta R.T.: 0.017 min
 Response: 5112489
 Conc: 35.22 ug/ml



#13 n-Docosane (C22)

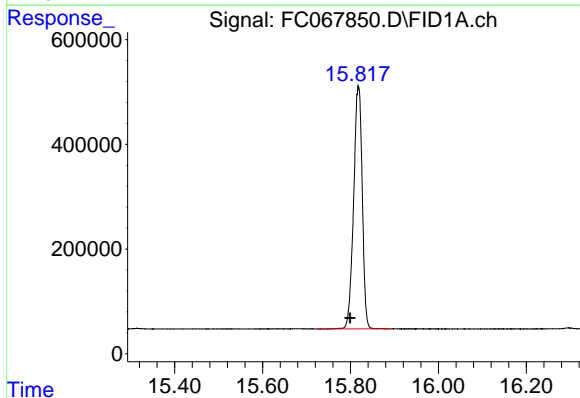
R.T.: 13.697 min
Delta R.T.: 0.019 min
Response: 6833014
Conc: 41.96 ug/ml

Instrument :
FID_C
ClientSampleId :



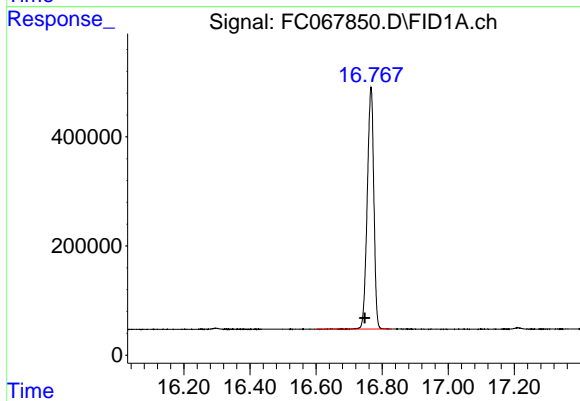
#14 n-Tetracosane (C24)

R.T.: 14.798 min
Delta R.T.: 0.018 min
Response: 6579576
Conc: 41.02 ug/ml



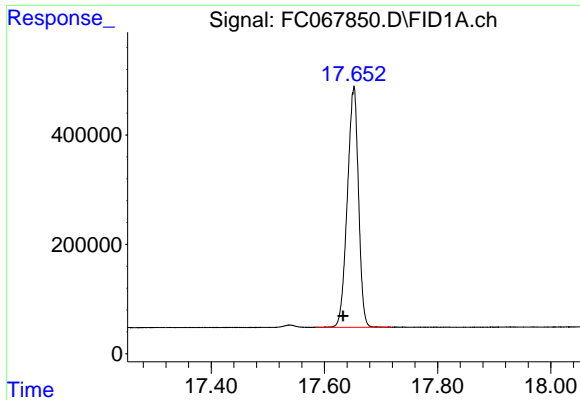
#15 n-Hexacosane (C26)

R.T.: 15.818 min
Delta R.T.: 0.018 min
Response: 6311220
Conc: 40.75 ug/ml



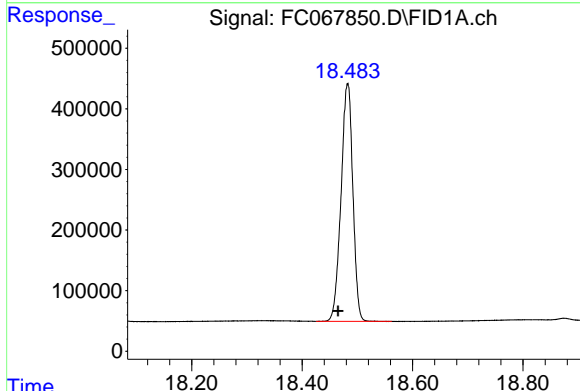
#16 n-Octacosane (C28)

R.T.: 16.766 min
Delta R.T.: 0.019 min
Response: 6119715
Conc: 40.52 ug/ml

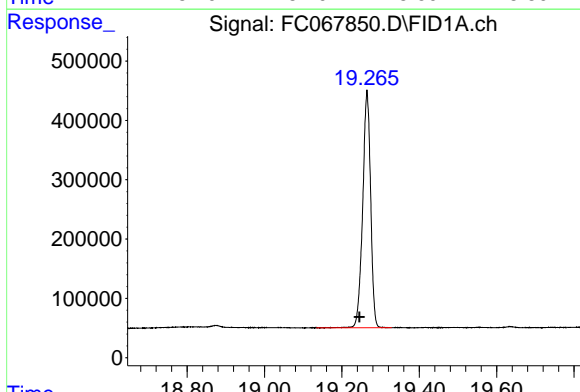


#17 n-Tricontane (C30)
 R.T.: 17.652 min
 Delta R.T.: 0.018 min
 Response: 6015860
 Conc: 39.29 ug/ml

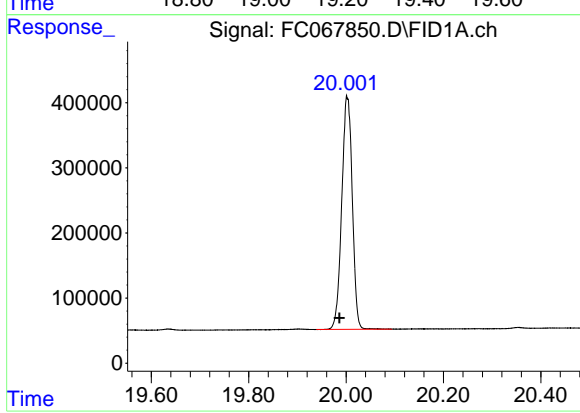
Instrument : FID_C
 ClientSampleId :



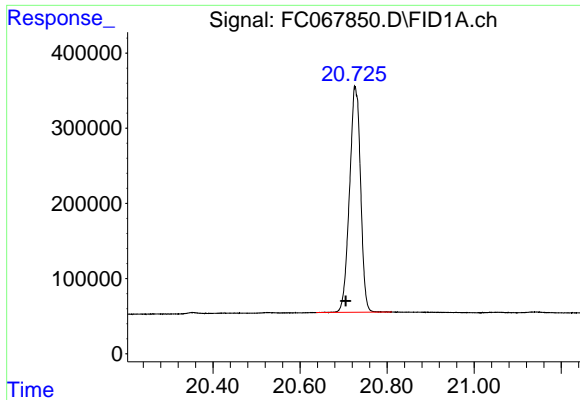
#18 n-Dotriacontane (C32)
 R.T.: 18.482 min
 Delta R.T.: 0.017 min
 Response: 5827037
 Conc: 39.45 ug/ml



#19 n-Tetratriacontane (C34)
 R.T.: 19.265 min
 Delta R.T.: 0.020 min
 Response: 5678127
 Conc: 45.02 ug/ml



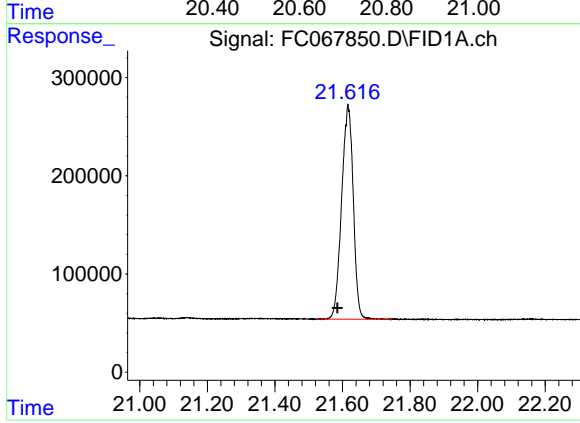
#20 n-Hexatriacontane (C36)
 R.T.: 20.003 min
 Delta R.T.: 0.016 min
 Response: 5380547
 Conc: 51.45 ug/ml



#21 n-Octatriacontane (C38)

R.T.: 20.727 min
Delta R.T.: 0.022 min
Response: 5302072
Conc: 54.28 ug/ml

Instrument :
FID_C
ClientSampleId :



#22 n-Tetracontane (C40)

R.T.: 21.617 min
Delta R.T.: 0.032 min
Response: 5207527
Conc: 53.43 ug/ml