

Data Path : Z:\pestpcbsrv\HPCHEM1\FID_C\Data\FC112320AL\
 Data File : FC050923.D
 Signal(s) : FID1A.CH
 Acq On : 24 Nov 2020 1:44
 Operator : DD\AJ
 Sample : L4844-02
 Misc :
 ALS Vial : 15 Sample Multiplier: 1

Integration File: autoint1.e
 Quant Time: Nov 24 03:59:01 2020
 Quant Method : Z:\pestpcbsrv\HPCHEM1\FID_C\Method\Alaphatic EPH 110220.M
 Quant Title : GC Extractables
 QLast Update : Tue Nov 03 02:36:40 2020
 Response via : Initial Calibration
 Integrator: ChemStation 6890 Scale Mode: Large solvent peaks clipped

Volume Inj. : 1 ul
 Signal Phase : Rxi-1ms
 Signal Info : 20M x 0.18mm x 0.18um

Compound	R.T.	Response	Conc Units

System Monitoring Compounds			
9) S ortho-Terphenyl (SURR)	11.648	1742005	14.182 ug/ml
Spiked Amount	50.000	Recovery	= 28.36%
12) S 1-chlorooctadecane (S...	13.039	5491379	56.876 ug/ml
Spiked Amount	50.000	Recovery	= 113.75%
Target Compounds			
6) T n-Tetradecane (C14)	8.199f	306470	2.841 ug/ml
7) T n-Hexadecane (C16)	9.860	675134	6.342 ug/ml
8) T n-Octadecane (C18)	11.371f	763039	6.783 ug/ml
10) T n-Eicosane (C20)	12.589	890618	7.803 ug/ml
11) T n-Heneicosane (C21)	13.236	993572	8.709 ug/ml
13) T n-Docosane (C22)	13.835	1872609	16.409 ug/ml
14) T n-Tetracosane (C24)	14.899	5999182	52.532 ug/ml
16) T n-Octacosane (C28)	16.899	1411992	12.444 ug/ml
17) T n-Tricontane (C30)	17.754	361581	3.252 ug/ml
18) T n-Dotriacontane (C32)	18.567	1375253	13.331 ug/ml

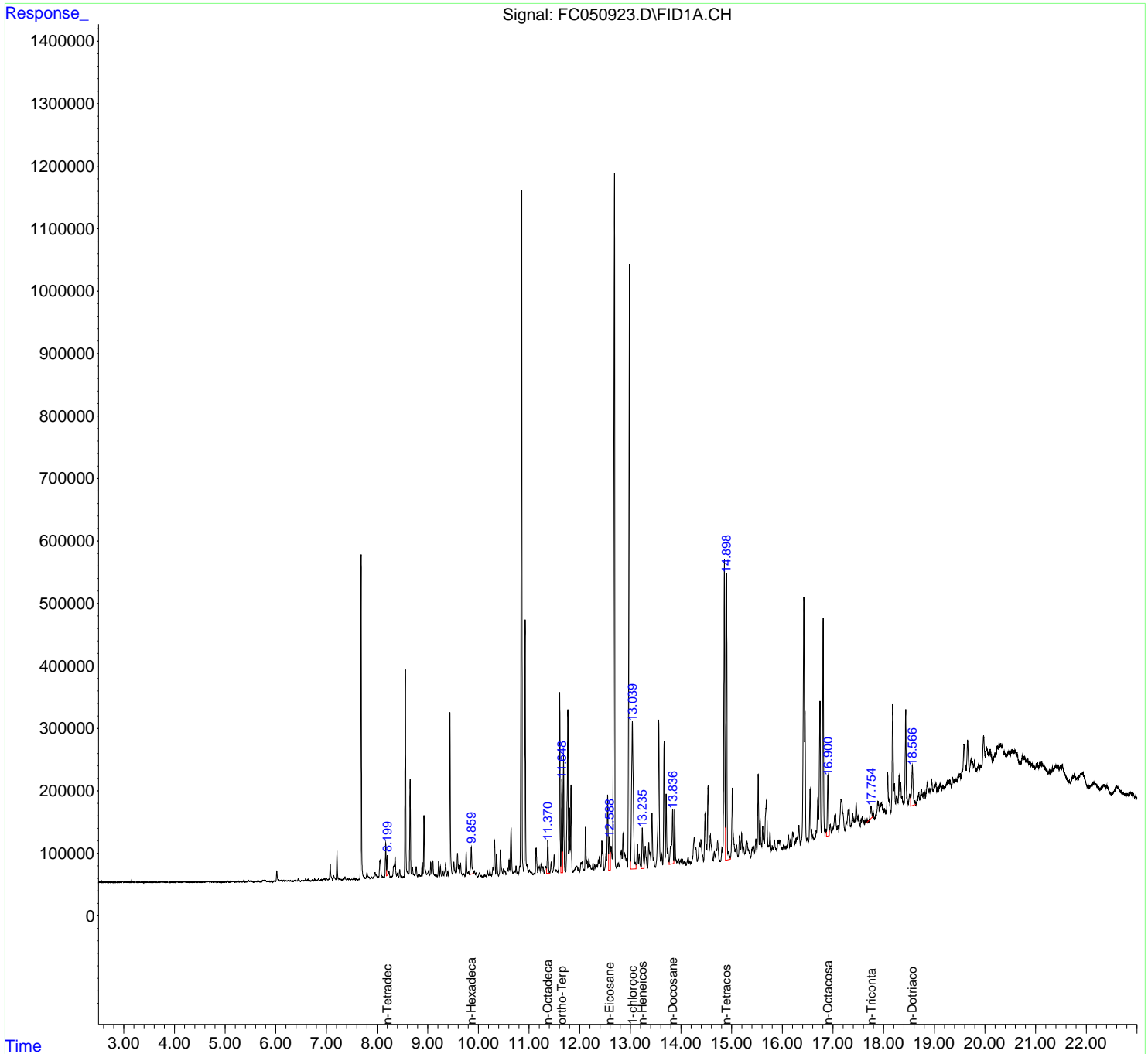
(f)=RT Delta > 1/2 Window

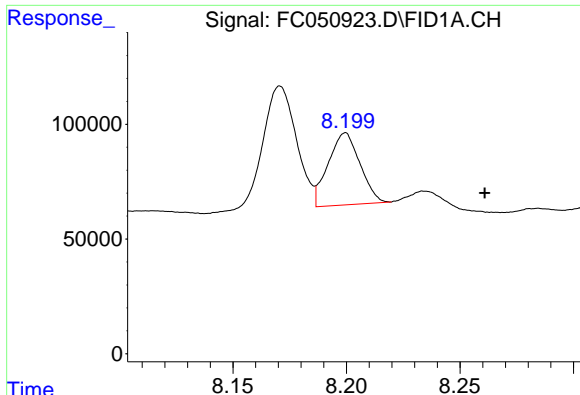
(m)=manual int.

Data Path : Z:\pestpcbsrv\HPCHEM1\FID_C\Data\FC112320AL\
 Data File : FC050923.D
 Signal(s) : FID1A.CH
 Acq On : 24 Nov 2020 1:44
 Operator : DD\AJ
 Sample : L4844-02
 Misc :
 ALS Vial : 15 Sample Multiplier: 1

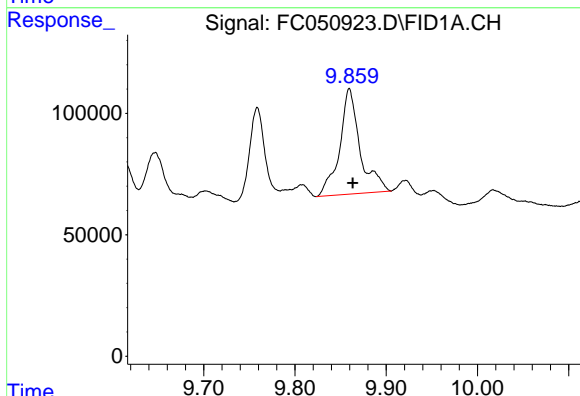
Integration File: autoint1.e
 Quant Time: Nov 24 03:59:01 2020
 Quant Method : Z:\pestpcbsrv\HPCHEM1\FID_C\Method\Aliphatic EPH 110220.M
 Quant Title : GC Extractables
 QLast Update : Tue Nov 03 02:36:40 2020
 Response via : Initial Calibration
 Integrator: ChemStation 6890 Scale Mode: Large solvent peaks clipped

Volume Inj. : 1 ul
 Signal Phase : Rxi-1ms
 Signal Info : 20M x 0.18mm x 0.18um

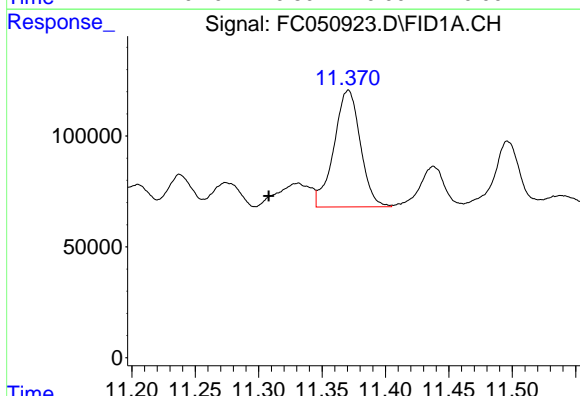




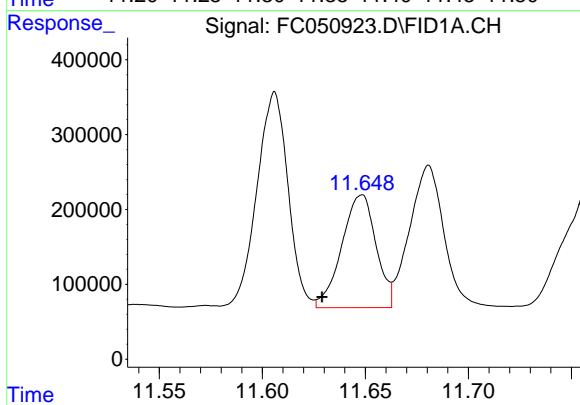
#6 n-Tetradecane (C14)
 R.T.: 8.199 min
 Delta R.T.: -0.061 min
 Response: 306470
 Conc: 2.84 ug/ml



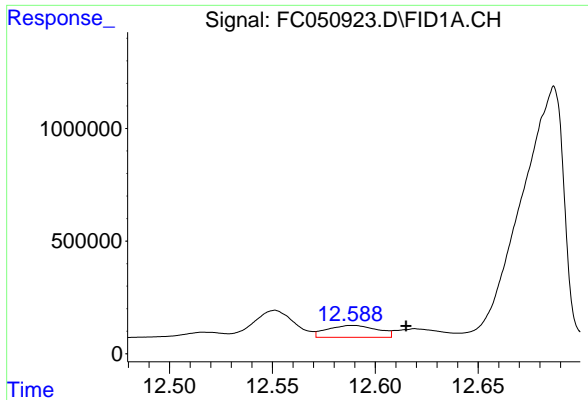
#7 n-Hexadecane (C16)
 R.T.: 9.860 min
 Delta R.T.: -0.003 min
 Response: 675134
 Conc: 6.34 ug/ml



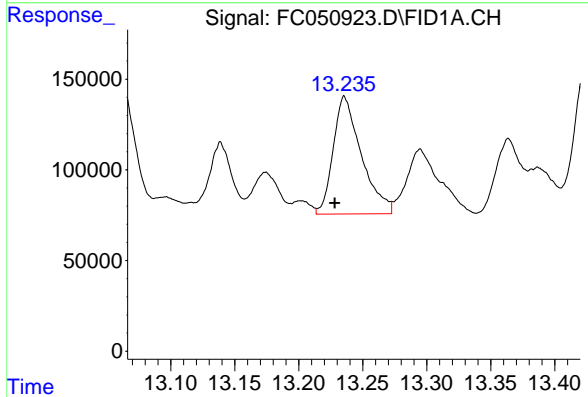
#8 n-Octadecane (C18)
 R.T.: 11.371 min
 Delta R.T.: 0.063 min
 Response: 763039
 Conc: 6.78 ug/ml



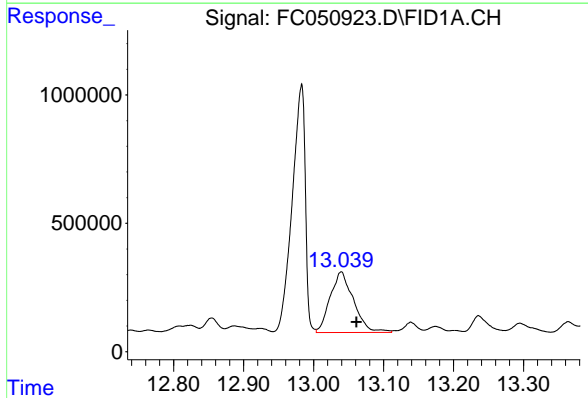
#9 ortho-Terphenyl (SURR)
 R.T.: 11.648 min
 Delta R.T.: 0.019 min
 Response: 1742005
 Conc: 14.18 ug/ml



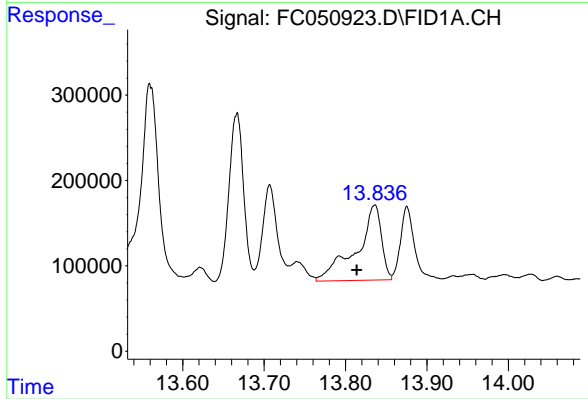
#10 n-Eicosane (C20)
R.T.: 12.589 min
Delta R.T.: -0.026 min
Response: 890618
Conc: 7.80 ug/ml



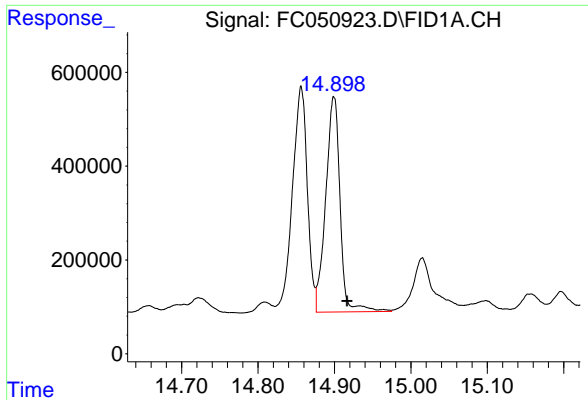
#11 n-Heneicosane (C21)
R.T.: 13.236 min
Delta R.T.: 0.008 min
Response: 993572
Conc: 8.71 ug/ml



#12 1-chlorooctadecane (SURR)
R.T.: 13.039 min
Delta R.T.: -0.022 min
Response: 5491379
Conc: 56.88 ug/ml



#13 n-Docosane (C22)
R.T.: 13.835 min
Delta R.T.: 0.022 min
Response: 1872609
Conc: 16.41 ug/ml



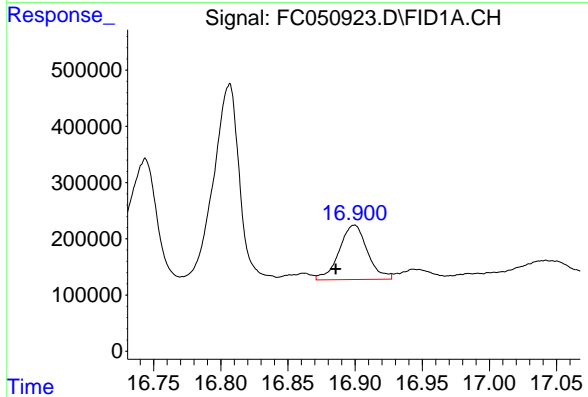
#14 n-Tetracosane (C24)

R.T.: 14.899 min

Delta R.T.: -0.018 min

Response: 5999182

Conc: 52.53 ug/ml



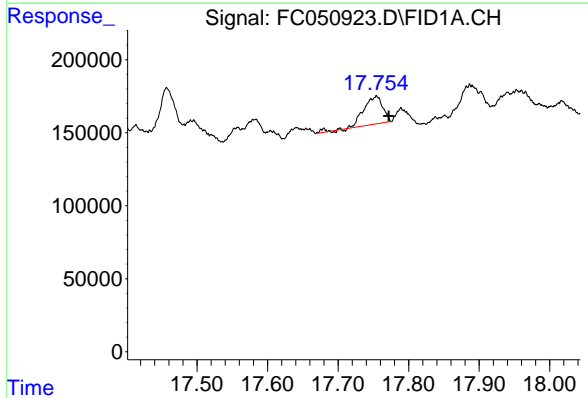
#16 n-Octacosane (C28)

R.T.: 16.899 min

Delta R.T.: 0.014 min

Response: 1411992

Conc: 12.44 ug/ml



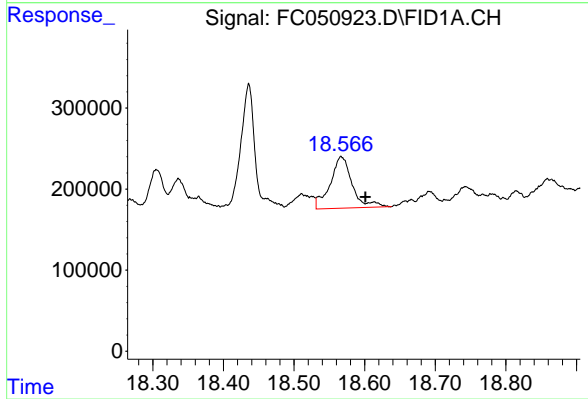
#17 n-Tricontane (C30)

R.T.: 17.754 min

Delta R.T.: -0.018 min

Response: 361581

Conc: 3.25 ug/ml



#18 n-Dotriacontane (C32)

R.T.: 18.567 min

Delta R.T.: -0.034 min

Response: 1375253

Conc: 13.33 ug/ml