

Data Path : Z:\pestpcbsrv\HPCHEM1\FID_C\Data\FC112321AL\
 Data File : FC057040.D
 Signal(s) : FID1A.CH
 Acq On : 24 Nov 2021 00:09
 Operator : AJ\MA
 Sample : M4786-01
 Misc :
 ALS Vial : 12 Sample Multiplier: 1

Instrument :
 FID_C
 ClientSampleId :

Integration File: autoint1.e
 Quant Time: Nov 24 02:17:13 2021
 Quant Method : Z:\pestpcbsrv\HPCHEM1\FID_C\Method\Aliphatic EPH 111921.M
 Quant Title : GC Extractables
 QLast Update : Fri Nov 19 00:52:49 2021
 Response via : Initial Calibration
 Integrator: ChemStation 6890 Scale Mode: Large solvent peaks clipped

Volume Inj. : 1 ul
 Signal Phase : Rxi-1ms
 Signal Info : 20M x 0.18mm x 0.18um

Compound	R.T.	Response	Conc Units

System Monitoring Compounds			
9) S ortho-Terphenyl (SURR)	11.593	4184429	36.058 ug/ml
Spiked Amount	50.000	Recovery	= 72.12%
12) S 1-chlorooctadecane (S...	13.025	3534093	38.820 ug/ml
Spiked Amount	50.000	Recovery	= 77.64%
Target Compounds			
3) T A~Naphthalene (C11.7)	6.068f	331287	2.967 ug/ml
10) T n-Eicosane (C20)	12.647f	637242	5.958 ug/ml
18) T n-Dotriacontane (C32)	18.549	346716	3.287 ug/ml
19) T n-Tetratriacontane (C34)	19.329	256696	2.471 ug/ml
20) T n-Hexatriacontane (C36)	20.067	287856	2.850 ug/ml

(f)=RT Delta > 1/2 Window

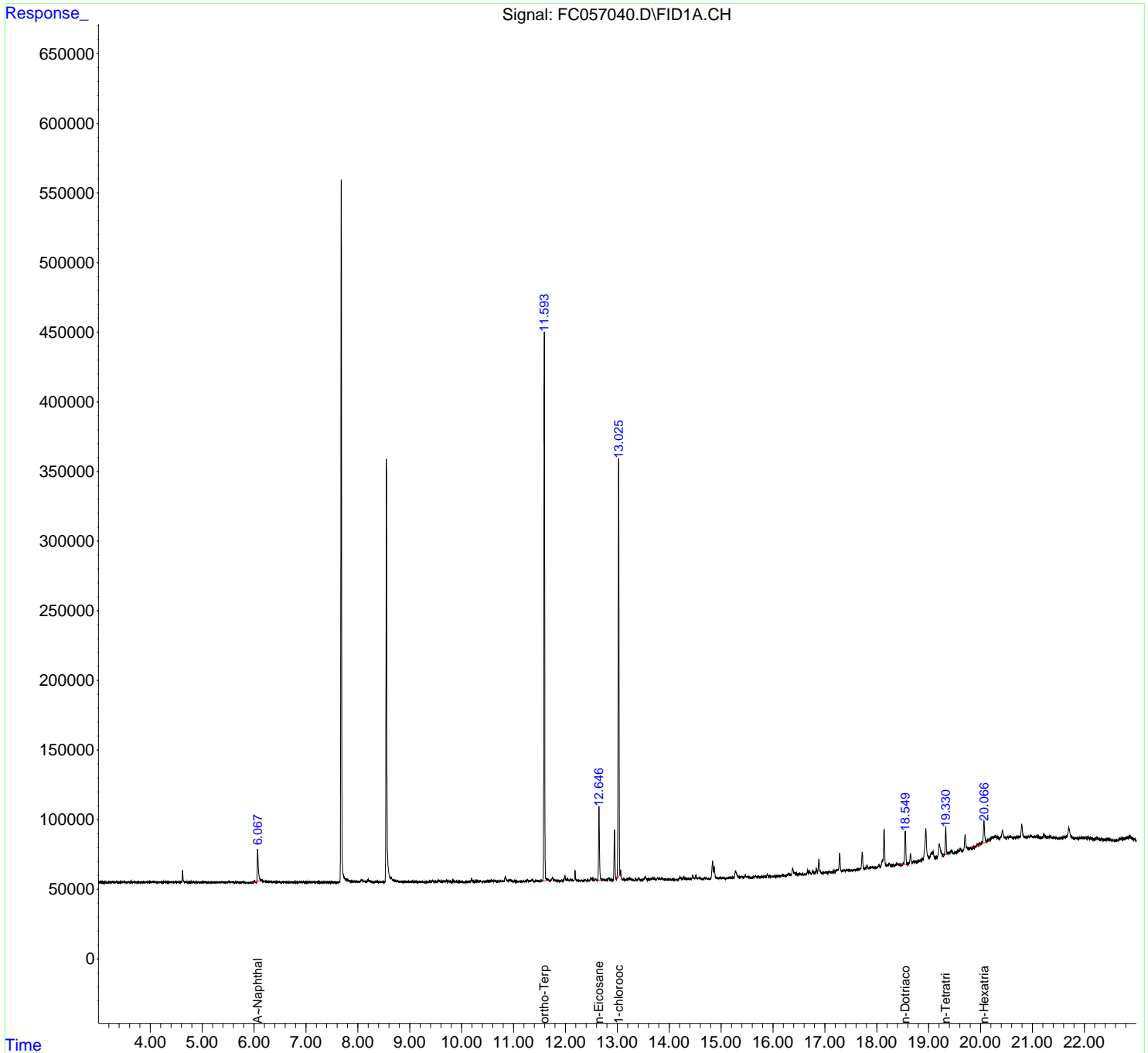
(m)=manual int.

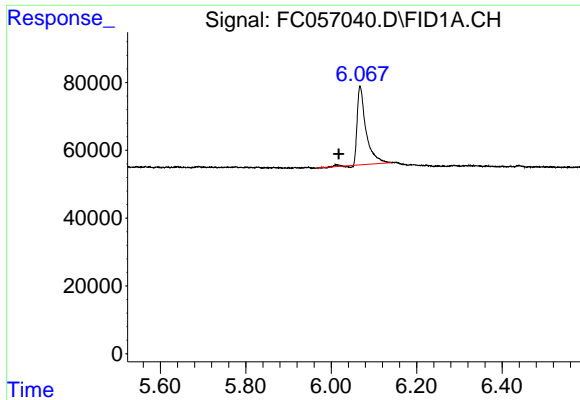
Data Path : Z:\pestpcbsrv\HPCHEM1\FID_C\Data\FC112321AL\
 Data File : FC057040.D
 Signal(s) : FID1A.CH
 Acq On : 24 Nov 2021 00:09
 Operator : AJ\MA
 Sample : M4786-01
 Misc :
 ALS Vial : 12 Sample Multiplier: 1

Instrument :
 FID_C
 ClientSampleId :

Integration File: autoint1.e
 Quant Time: Nov 24 02:17:13 2021
 Quant Method : Z:\pestpcbsrv\HPCHEM1\FID_C\Method\Aliphatic EPH 111921.M
 Quant Title : GC Extractables
 QLast Update : Fri Nov 19 00:52:49 2021
 Response via : Initial Calibration
 Integrator: ChemStation 6890 Scale Mode: Large solvent peaks clipped

Volume Inj. : 1 ul
 Signal Phase : Rxi-1ms
 Signal Info : 20M x 0.18mm x 0.18um

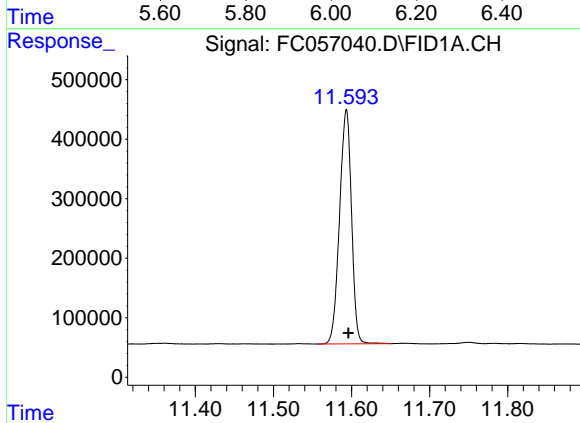




#3 A~Naphthalene (C11.7)

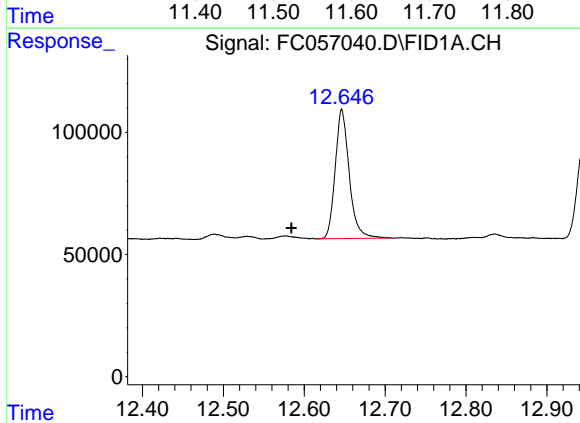
R.T.: 6.068 min
 Delta R.T.: 0.050 min
 Response: 331287
 Conc: 2.97 ug/ml

Instrument :
 FID_C
 ClientSampleId :



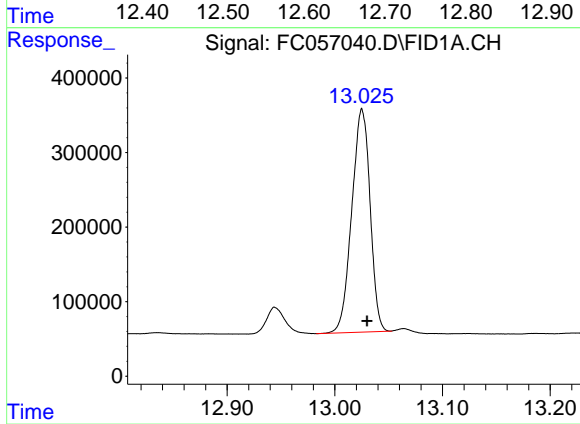
#9 ortho-Terphenyl (SURR)

R.T.: 11.593 min
 Delta R.T.: -0.003 min
 Response: 4184429
 Conc: 36.06 ug/ml



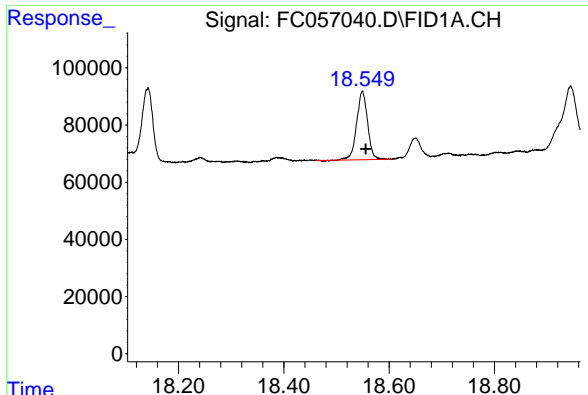
#10 n-Eicosane (C20)

R.T.: 12.647 min
 Delta R.T.: 0.062 min
 Response: 637242
 Conc: 5.96 ug/ml



#12 1-chlorooctadecane (SURR)

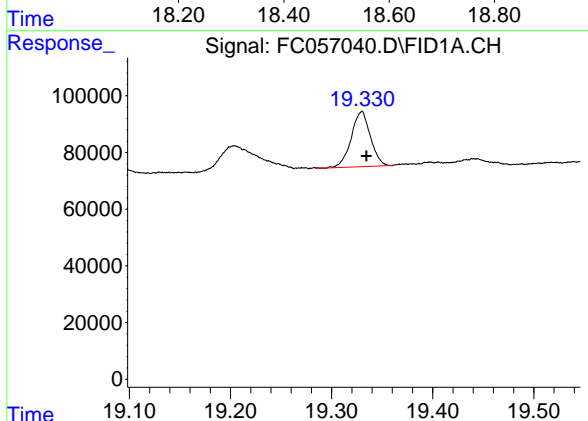
R.T.: 13.025 min
 Delta R.T.: -0.005 min
 Response: 3534093
 Conc: 38.82 ug/ml



#18 n-Dotriacontane (C32)

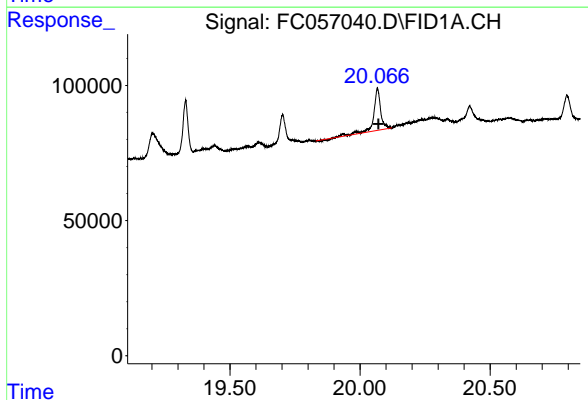
R.T.: 18.549 min
Delta R.T.: -0.006 min
Response: 346716
Conc: 3.29 ug/ml

Instrument :
FID_C
ClientSampleId :



#19 n-Tetraatriacontane (C34)

R.T.: 19.329 min
Delta R.T.: -0.005 min
Response: 256696
Conc: 2.47 ug/ml



#20 n-Hexatriacontane (C36)

R.T.: 20.067 min
Delta R.T.: -0.003 min
Response: 287856
Conc: 2.85 ug/ml