

Data Path : Z:\pestpcbsrv\HPCHEM1\FID_C\Data\FC112322AL\
 Data File : FC062262.D
 Signal(s) : FID1A.ch
 Acq On : 23 Nov 2022 13:14
 Operator : YP/AJ
 Sample : 20 PPM ALIPHATIC HC STD
 Misc :
 ALS Vial : 2 Sample Multiplier: 1

Instrument :
 FID_C
 ClientSampleId :
 20 PPM ALIPHATIC HC STD

Integration File: autoint1.e
 Quant Time: Nov 24 14:15:06 2022
 Quant Method : Z:\pestpcbsrv\HPCHEM1\FID_C\Method\Aliphatic EPH 111422.M
 Quant Title : GC Extractables
 QLast Update : Mon Nov 21 12:12:05 2022
 Response via : Initial Calibration
 Integrator: ChemStation

Volume Inj. : 1 ul
 Signal Phase : Rxi-1ms
 Signal Info : 20M x 0.18mm x 0.18um

Compound	R.T.	Response	Conc Units

System Monitoring Compounds			
9) S ortho-Terphenyl (SURR)	11.596	2457079	18.001 ug/ml
Spiked Amount	50.000	Recovery	= 36.00%
12) S 1-chlorooctadecane (S...	13.034	1863496	18.332 ug/ml
Spiked Amount	50.000	Recovery	= 36.66%
Target Compounds			
1) T n-Nonane (C9)	3.345	2408999	17.308 ug/ml
2) T n-Decane (C10)	4.414	2381110	17.599 ug/ml
3) T A~Naphthalene (C11.7)	6.002	2581127	17.618 ug/ml
4) T n-Dodecane (C12)	6.436	2361022	17.673 ug/ml
5) T A~2-methylnaphthalene...	7.061	2358206	17.586 ug/ml
6) T n-Tetradecane (C14)	8.233	2336091	17.895 ug/ml
7) T n-Hexadecane (C16)	9.836	2356845	18.179 ug/ml
8) T n-Octadecane (C18)	11.279	2328321	18.234 ug/ml
10) T n-Eicosane (C20)	12.589	2216964	18.238 ug/ml
11) T n-Heneicosane (C21)	13.202	2193764	18.202 ug/ml
13) T n-Docosane (C22)	13.788	2156947	18.297 ug/ml
14) T n-Tetracosane (C24)	14.892	2116687	18.395 ug/ml
15) T n-Hexacosane (C26)	15.912	2090202	18.759 ug/ml
16) T n-Octacosane (C28)	16.861	2145563	19.569 ug/ml
17) T n-Tricontane (C30)	17.750	2306726	21.064 ug/ml
18) T n-Dotriacontane (C32)	18.581	2399911	21.729 ug/ml
19) T n-Tetratriacontane (C34)	19.363	2309358	21.122 ug/ml
20) T n-Hexatriacontane (C36)	20.103	2118005	20.209 ug/ml
21) T n-Octatriacontane (C38)	20.844	2028966	19.604 ug/ml
22) T n-Tetracontane (C40)	21.772	1958086	19.075 ug/ml

(f)=RT Delta > 1/2 Window

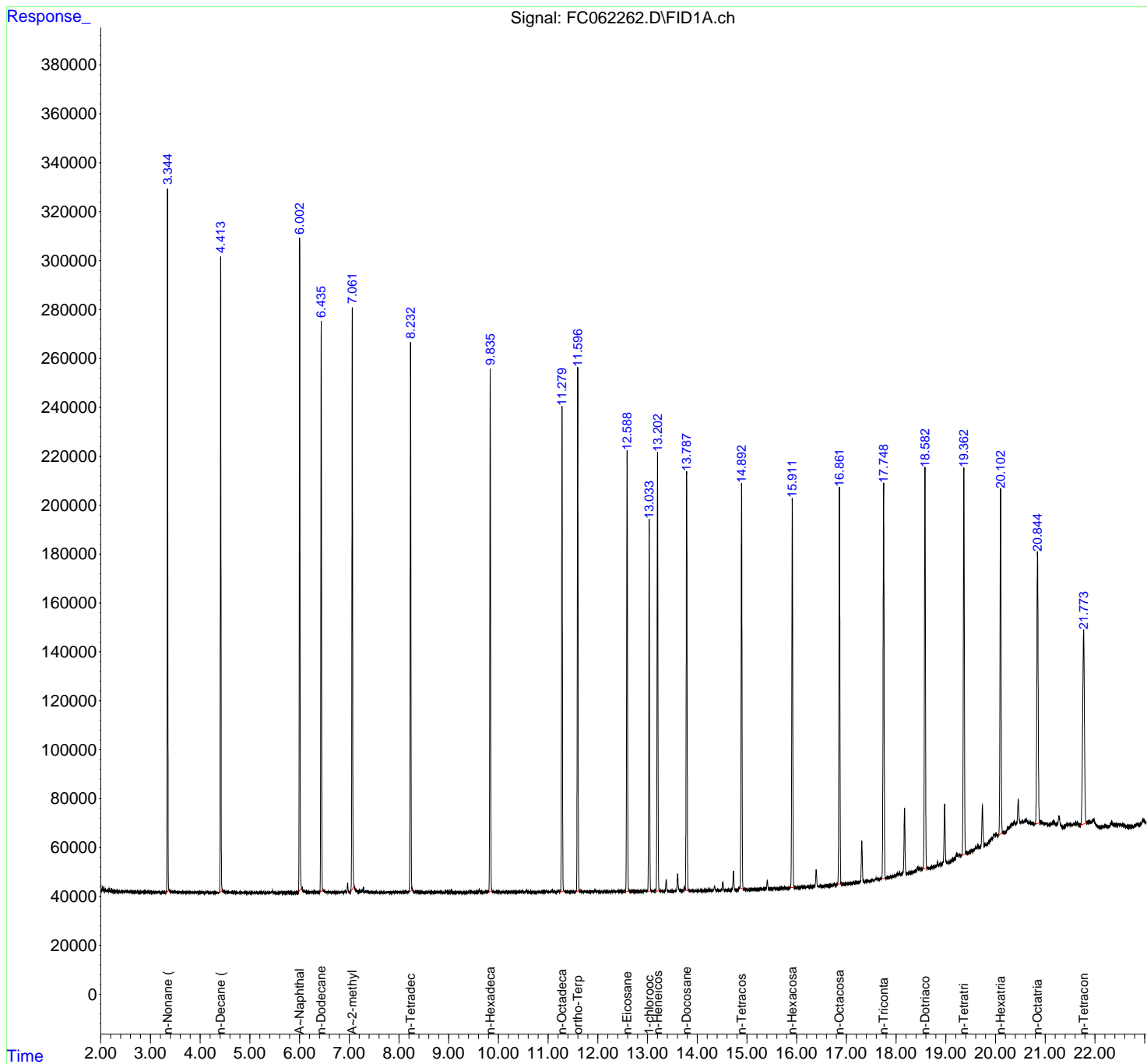
(m)=manual int.

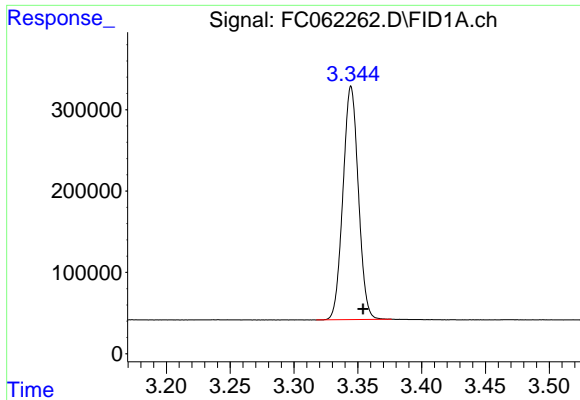
Data Path : Z:\pestpcbsrv\HPCHEM1\FID_C\Data\FC112322AL\
 Data File : FC062262.D
 Signal(s) : FID1A.ch
 Acq On : 23 Nov 2022 13:14
 Operator : YP/AJ
 Sample : 20 PPM ALIPHATIC HC STD
 Misc :
 ALS Vial : 2 Sample Multiplier: 1

Instrument :
 FID_C
 ClientSampleId :
 20 PPM ALIPHATIC HC STD

Integration File: autoint1.e
 Quant Time: Nov 24 14:15:06 2022
 Quant Method : Z:\pestpcbsrv\HPCHEM1\FID_C\Method\Aliphatic EPH 111422.M
 Quant Title : GC Extractables
 QLast Update : Mon Nov 21 12:12:05 2022
 Response via : Initial Calibration
 Integrator: ChemStation

Volume Inj. : 1 ul
 Signal Phase : Rxi-1ms
 Signal Info : 20M x 0.18mm x 0.18um

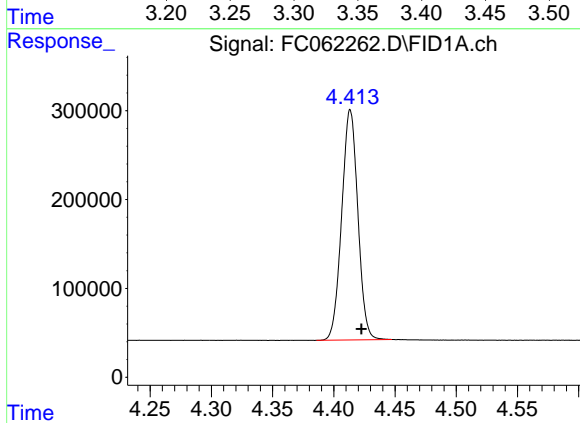




#1 n-Nonane (C9)

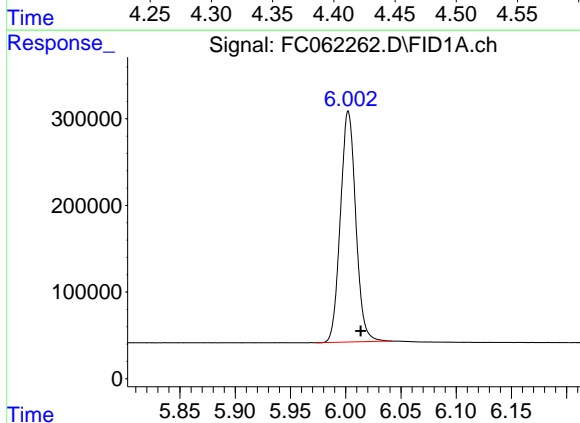
R.T.: 3.345 min
 Delta R.T.: -0.009 min
 Response: 2408999
 Conc: 17.31 ug/ml

Instrument : FID_C
 ClientSampleId : 20 PPM ALIPHATIC HC STD



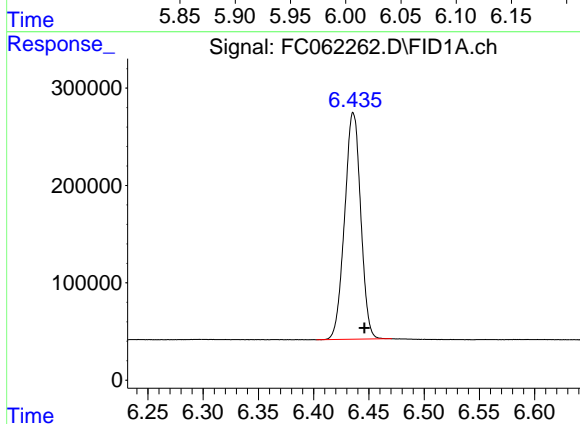
#2 n-Decane (C10)

R.T.: 4.414 min
 Delta R.T.: -0.009 min
 Response: 2381110
 Conc: 17.60 ug/ml



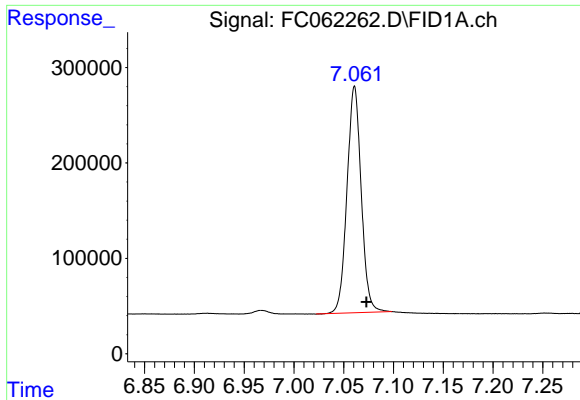
#3 A~Naphthalene (C11.7)

R.T.: 6.002 min
 Delta R.T.: -0.011 min
 Response: 2581127
 Conc: 17.62 ug/ml



#4 n-Dodecane (C12)

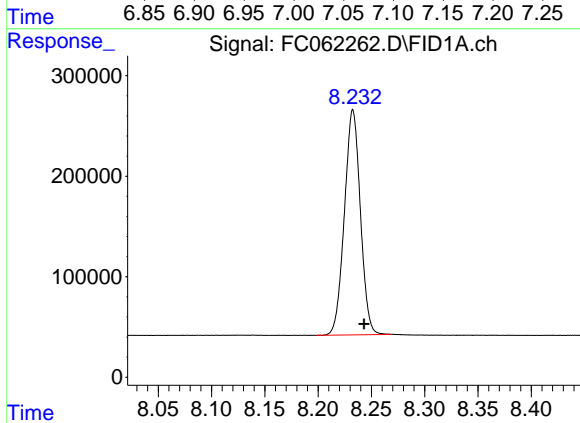
R.T.: 6.436 min
 Delta R.T.: -0.010 min
 Response: 2361022
 Conc: 17.67 ug/ml



#5 A~2-methylnaphthalene (C12.89)

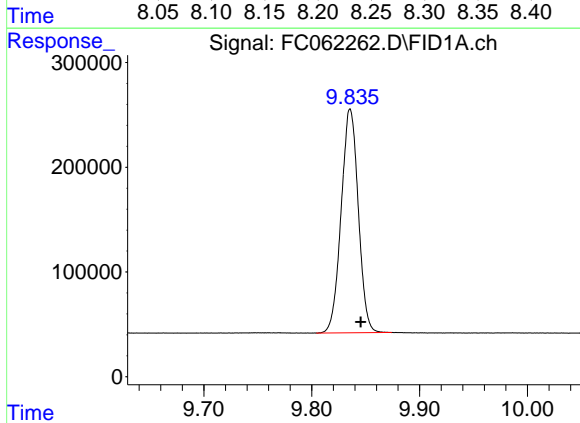
R.T.: 7.061 min
 Delta R.T.: -0.012 min
 Response: 2358206
 Conc: 17.59 ug/ml

Instrument : FID_C
 ClientSampleId : 20 PPM ALIPHATIC HC STD



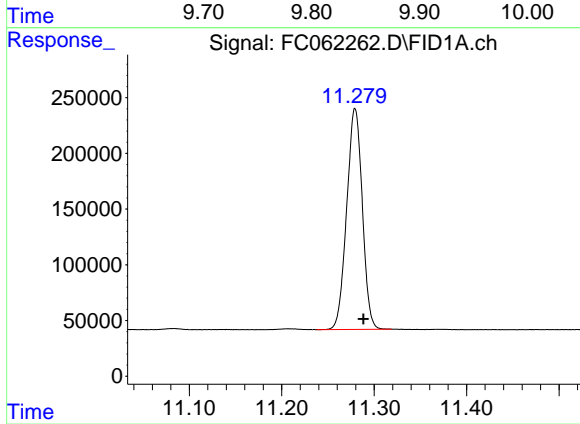
#6 n-Tetradecane (C14)

R.T.: 8.233 min
 Delta R.T.: -0.011 min
 Response: 2336091
 Conc: 17.90 ug/ml



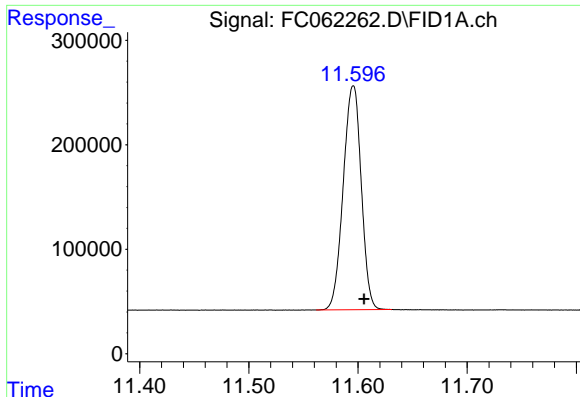
#7 n-Hexadecane (C16)

R.T.: 9.836 min
 Delta R.T.: -0.010 min
 Response: 2356845
 Conc: 18.18 ug/ml



#8 n-Octadecane (C18)

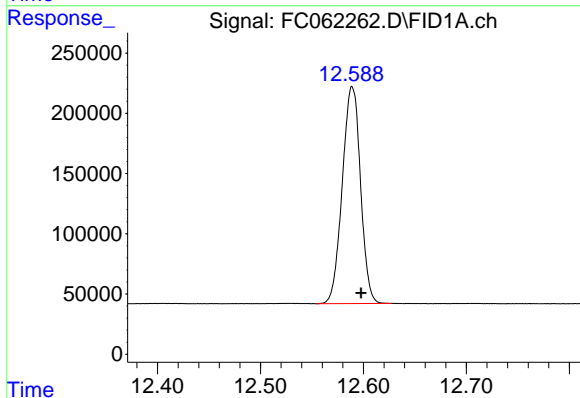
R.T.: 11.279 min
 Delta R.T.: -0.009 min
 Response: 2328321
 Conc: 18.23 ug/ml



#9 ortho-Terphenyl (SURR)

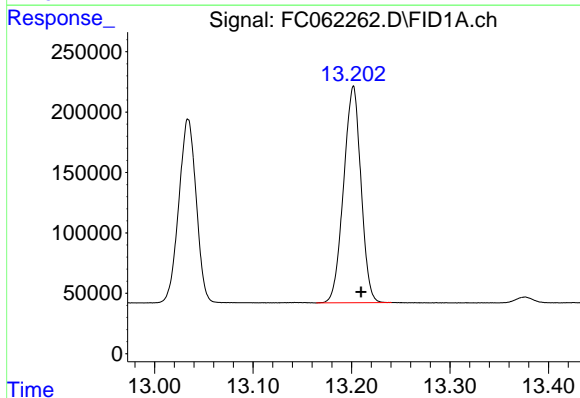
R.T.: 11.596 min
 Delta R.T.: -0.010 min
 Response: 2457079
 Conc: 18.00 ug/ml

Instrument :
 FID_C
 ClientSampleId :
 20 PPM ALIPHATIC HC STD



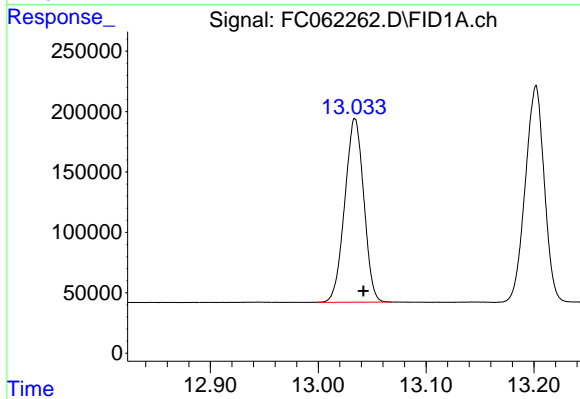
#10 n-Eicosane (C20)

R.T.: 12.589 min
 Delta R.T.: -0.008 min
 Response: 2216964
 Conc: 18.24 ug/ml



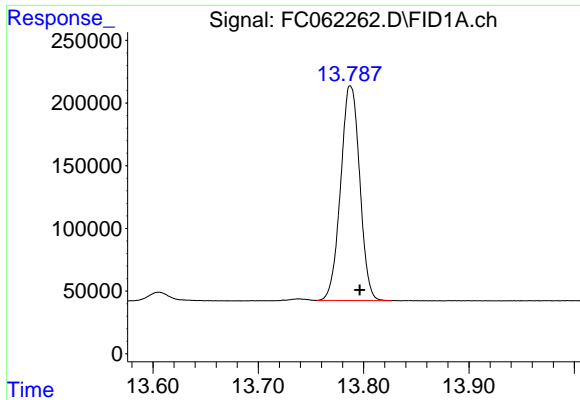
#11 n-Heneicosane (C21)

R.T.: 13.202 min
 Delta R.T.: -0.008 min
 Response: 2193764
 Conc: 18.20 ug/ml



#12 1-chlorooctadecane (SURR)

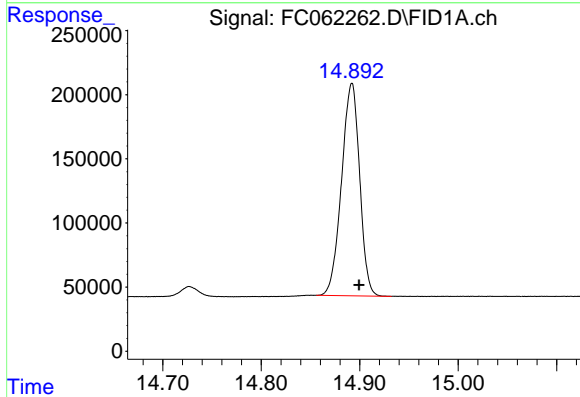
R.T.: 13.034 min
 Delta R.T.: -0.008 min
 Response: 1863496
 Conc: 18.33 ug/ml



#13 n-Docosane (C22)

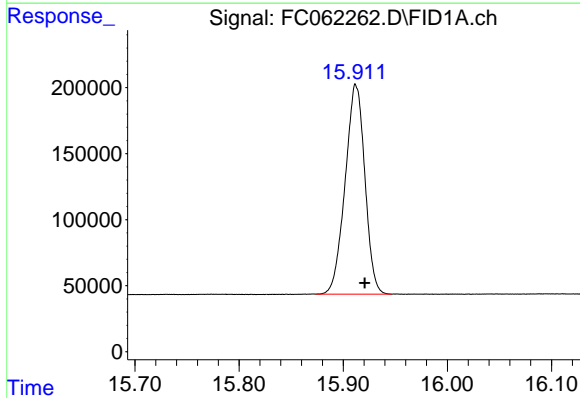
R.T.: 13.788 min
 Delta R.T.: -0.009 min
 Response: 2156947
 Conc: 18.30 ug/ml

Instrument : FID_C
 ClientSampleId : 20 PPM ALIPHATIC HC STD



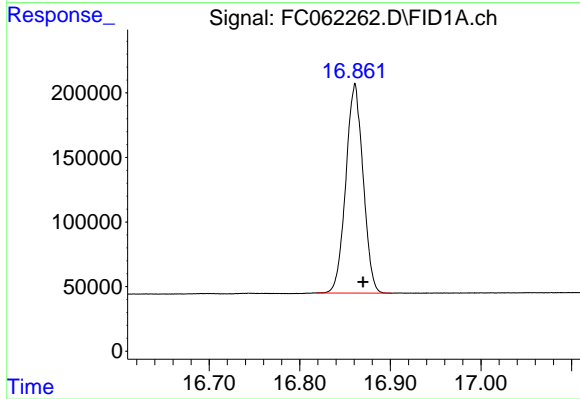
#14 n-Tetracosane (C24)

R.T.: 14.892 min
 Delta R.T.: -0.007 min
 Response: 2116687
 Conc: 18.40 ug/ml



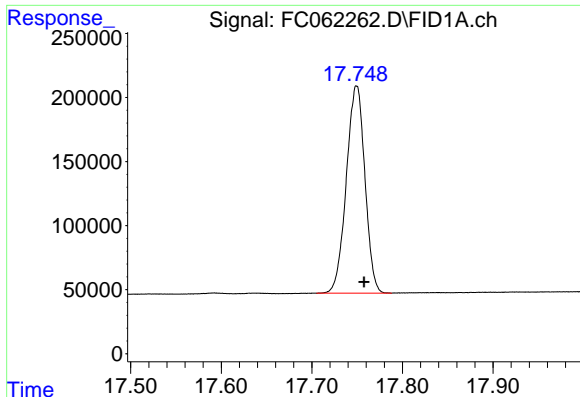
#15 n-Hexacosane (C26)

R.T.: 15.912 min
 Delta R.T.: -0.008 min
 Response: 2090202
 Conc: 18.76 ug/ml



#16 n-Octacosane (C28)

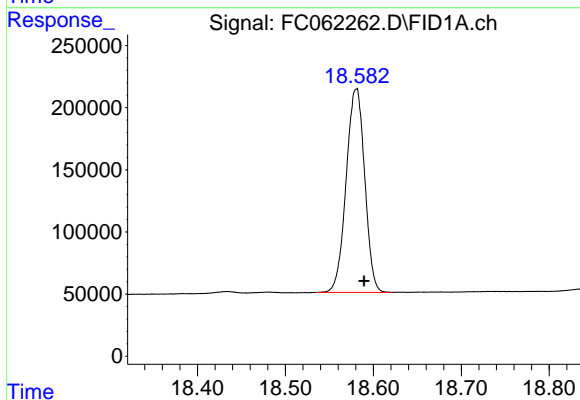
R.T.: 16.861 min
 Delta R.T.: -0.009 min
 Response: 2145563
 Conc: 19.57 ug/ml



#17 n-Tricontane (C30)

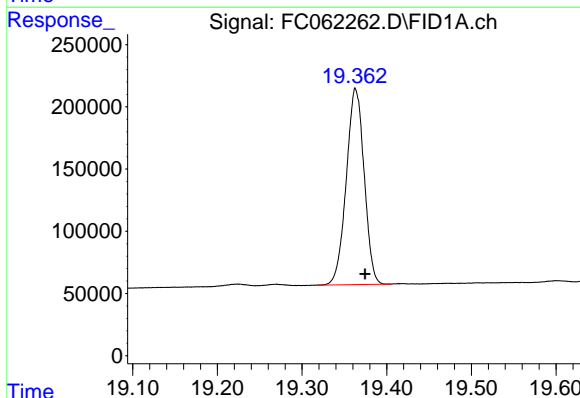
R.T.: 17.750 min
Delta R.T.: -0.008 min
Response: 2306726
Conc: 21.06 ug/ml

Instrument :
FID_C
ClientSampleId :
20 PPM ALIPHATIC HC STD



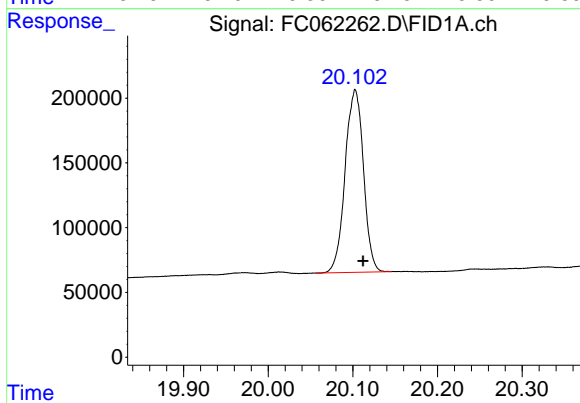
#18 n-Dotriacontane (C32)

R.T.: 18.581 min
Delta R.T.: -0.009 min
Response: 2399911
Conc: 21.73 ug/ml



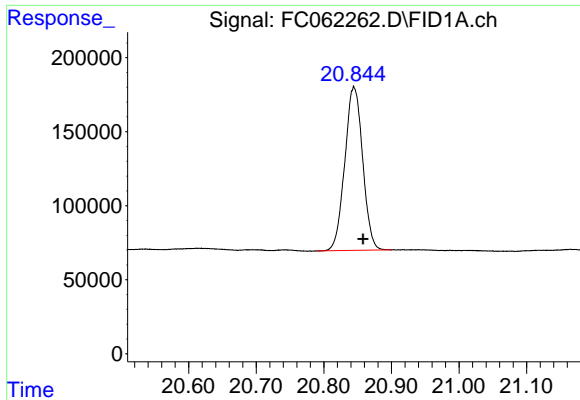
#19 n-Tetratriacontane (C34)

R.T.: 19.363 min
Delta R.T.: -0.011 min
Response: 2309358
Conc: 21.12 ug/ml



#20 n-Hexatriacontane (C36)

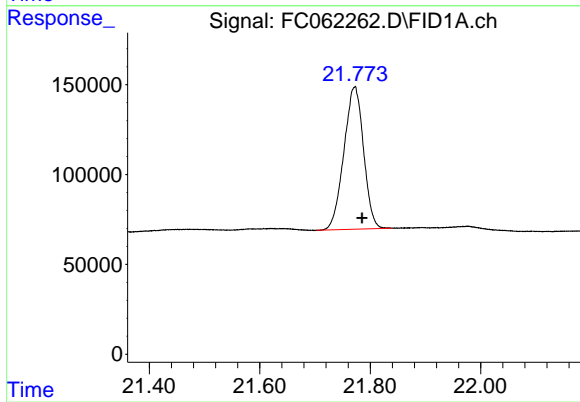
R.T.: 20.103 min
Delta R.T.: -0.009 min
Response: 2118005
Conc: 20.21 ug/ml



#21 n-Octatriacontane (C38)

R.T.: 20.844 min
Delta R.T.: -0.014 min
Response: 2028966
Conc: 19.60 ug/ml

Instrument :
FID_C
ClientSampleId :
20 PPM ALIPHATIC HC STD



#22 n-Tetracontane (C40)

R.T.: 21.772 min
Delta R.T.: -0.013 min
Response: 1958086
Conc: 19.07 ug/ml