

Data Path : Z:\pestpcbsrv\HPCHEM1\FID\_C\Data\FC112420AL\  
 Data File : FC050961.D  
 Signal(s) : FID1A.CH  
 Acq On : 25 Nov 2020 8:57  
 Operator : DD\AJ  
 Sample : 20 PPM ALIPHATIC HC STD  
 Misc :  
 ALS Vial : 2 Sample Multiplier: 1

Integration File: autoint1.e  
 Quant Time: Nov 25 09:43:01 2020  
 Quant Method : Z:\pestpcbsrv\HPCHEM1\FID\_C\Method\Alaphatic EPH 110220.M  
 Quant Title : GC Extractables  
 QLast Update : Tue Nov 03 02:36:40 2020  
 Response via : Initial Calibration  
 Integrator: ChemStation 6890 Scale Mode: Large solvent peaks clipped

Volume Inj. : 1 ul  
 Signal Phase : Rxi-1ms  
 Signal Info : 20M x 0.18mm x 0.18um

Compound	R.T.	Response	Conc Units
-----			
System Monitoring Compounds			
9) S ortho-Terphenyl (SURR)	11.603	2350198	19.134 ug/ml
Spiked Amount	50.000	Recovery	= 38.27%
12) S 1-chlorooctadecane (S...	13.037	1792323	18.564 ug/ml
Spiked Amount	50.000	Recovery	= 37.13%
Target Compounds			
1) T n-Nonane (C9)	3.353	2234227	20.997 ug/ml
2) T n-Decane (C10)	4.423	2262387	21.273 ug/ml
3) T A~Naphthalene (C11.7)	6.018	2413230	20.955 ug/ml
4) T n-Dodecane (C12)	6.444	2324426	21.438 ug/ml
5) T A~2-methylnaphthalene...	7.076	2398620	20.907 ug/ml
6) T n-Tetradecane (C14)	8.239	2311152	21.427 ug/ml
7) T n-Hexadecane (C16)	9.841	2248803	21.125 ug/ml
8) T n-Octadecane (C18)	11.283	2298472	20.433 ug/ml
10) T n-Eicosane (C20)	12.591	2239721	19.623 ug/ml
11) T n-Heneicosane (C21)	13.203	2189736	19.195 ug/ml
13) T n-Docosane (C22)	13.788	2146043	18.805 ug/ml
14) T n-Tetracosane (C24)	14.891	2069931	18.125 ug/ml
15) T n-Hexacosane (C26)	15.911	2019238	17.809 ug/ml
16) T n-Octacosane (C28)	16.860	2002094	17.644 ug/ml
17) T n-Tricontane (C30)	17.746	1975892	17.772 ug/ml
18) T n-Dotriacontane (C32)	18.578	1873878	18.164 ug/ml
19) T n-Tetratriacontane (C34)	19.359	1778649	18.485 ug/ml
20) T n-Hexatriacontane (C36)	20.098	1781546	19.830 ug/ml
21) T n-Octatriacontane (C38)	20.839	1388494	16.699 ug/ml
22) T n-Tetracontane (C40)	21.761	1560294	18.646 ug/ml
-----			

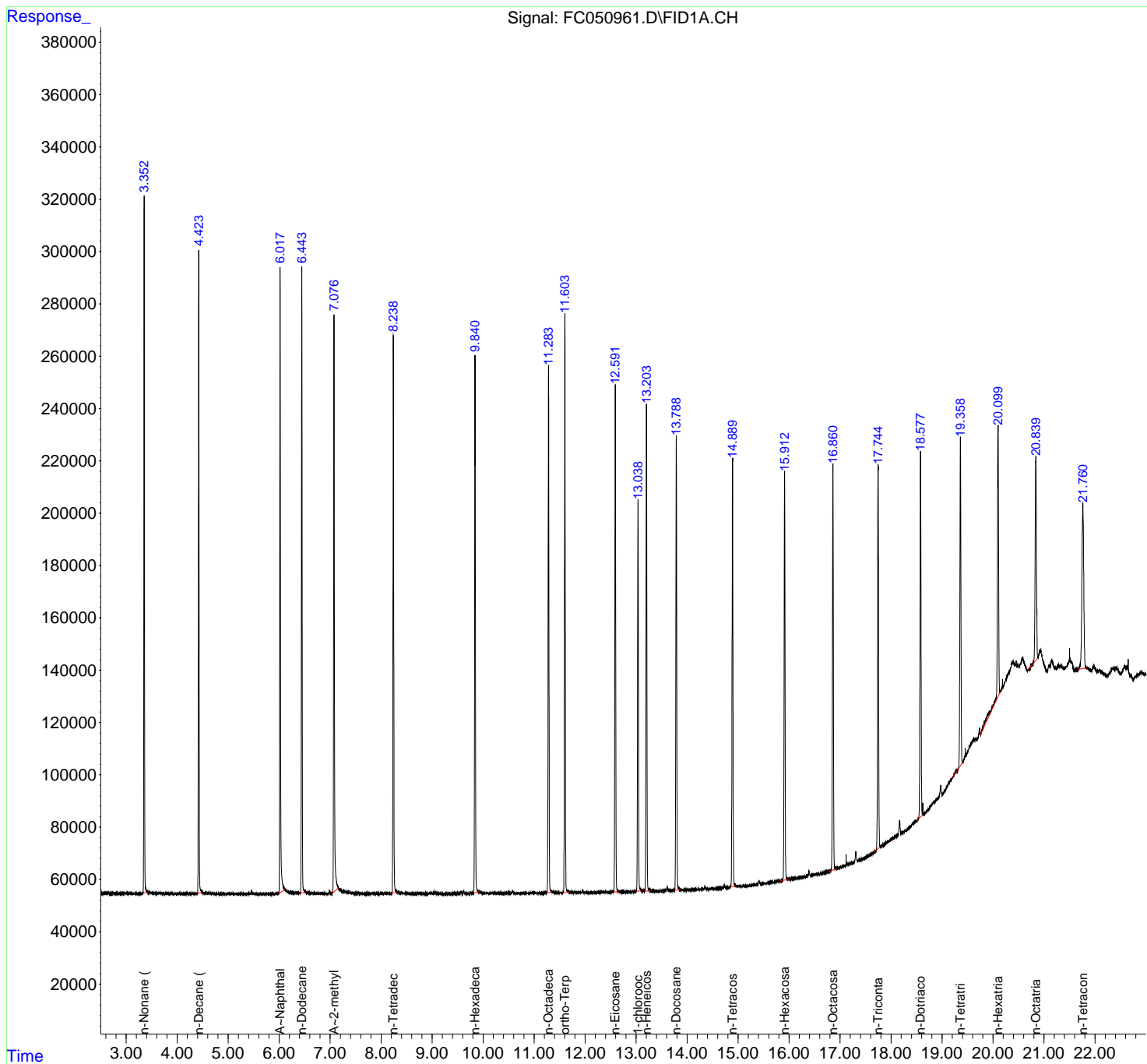
(f)=RT Delta > 1/2 Window

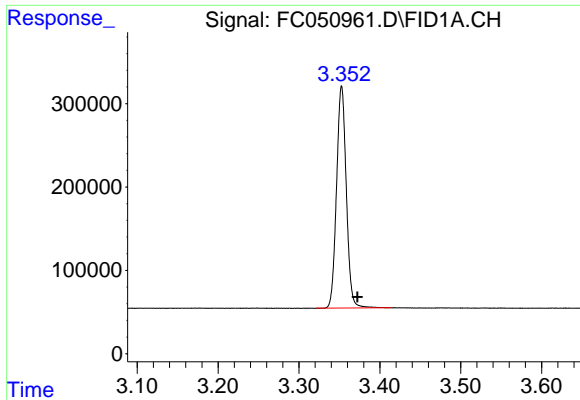
(m)=manual int.

Data Path : Z:\pestpcbsrv\HPCHEM1\FID\_C\Data\FC112420AL\  
 Data File : FC050961.D  
 Signal(s) : FID1A.CH  
 Acq On : 25 Nov 2020 8:57  
 Operator : DD\AJ  
 Sample : 20 PPM ALIPHATIC HC STD  
 Misc :  
 ALS Vial : 2 Sample Multiplier: 1

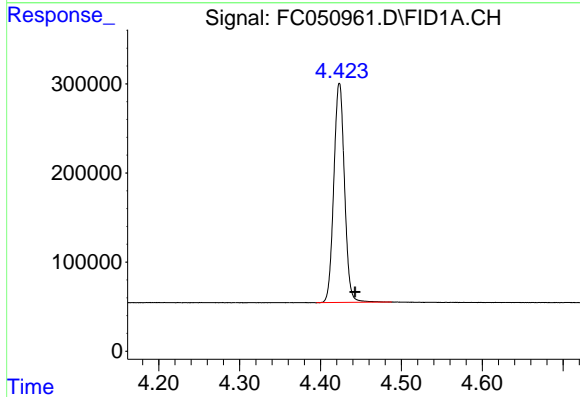
Integration File: autoint1.e  
 Quant Time: Nov 25 09:43:01 2020  
 Quant Method : Z:\pestpcbsrv\HPCHEM1\FID\_C\Method\Aliphatic EPH 110220.M  
 Quant Title : GC Extractables  
 QLast Update : Tue Nov 03 02:36:40 2020  
 Response via : Initial Calibration  
 Integrator: ChemStation 6890 Scale Mode: Large solvent peaks clipped

Volume Inj. : 1 ul  
 Signal Phase : Rxi-1ms  
 Signal Info : 20M x 0.18mm x 0.18um

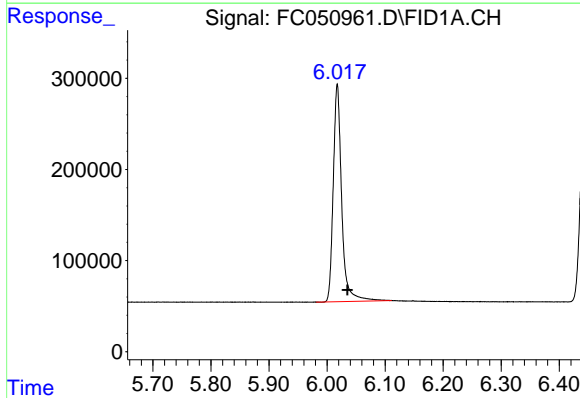




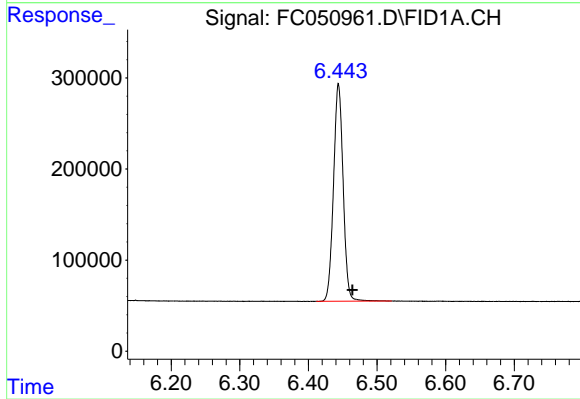
#1 n-Nonane (C9)  
R.T.: 3.353 min  
Delta R.T.: -0.019 min  
Response: 2234227  
Conc: 21.00 ug/ml



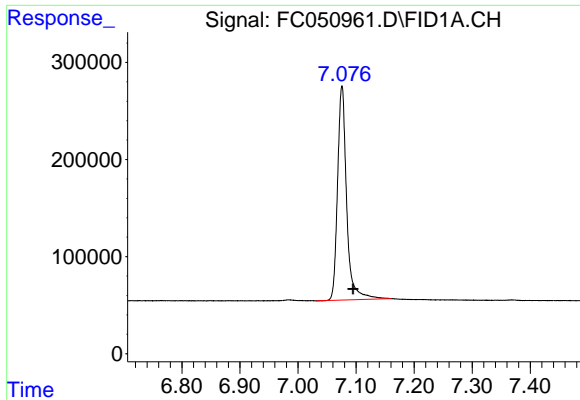
#2 n-Decane (C10)  
R.T.: 4.423 min  
Delta R.T.: -0.019 min  
Response: 2262387  
Conc: 21.27 ug/ml



#3 A~Naphthalene (C11.7)  
R.T.: 6.018 min  
Delta R.T.: -0.018 min  
Response: 2413230  
Conc: 20.96 ug/ml

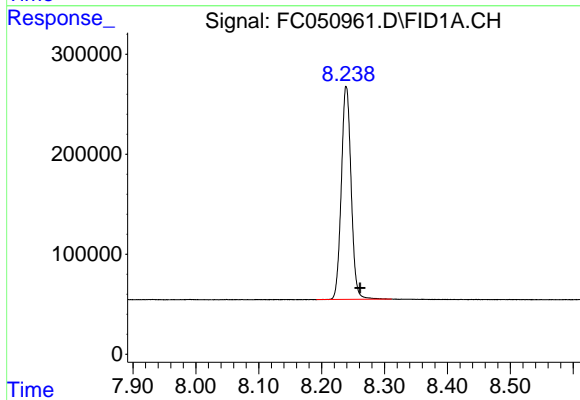


#4 n-Dodecane (C12)  
R.T.: 6.444 min  
Delta R.T.: -0.020 min  
Response: 2324426  
Conc: 21.44 ug/ml



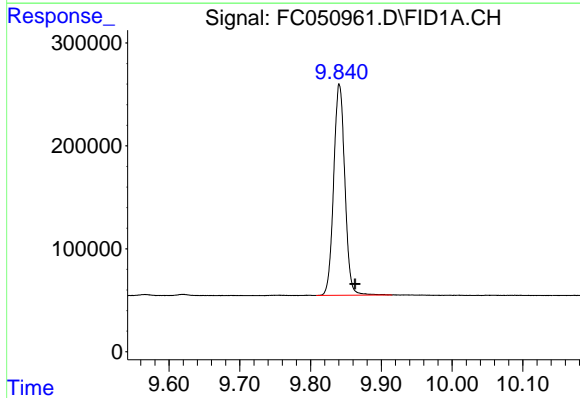
#5 A~2-methylnaphthalene (C12.89)

R.T.: 7.076 min  
 Delta R.T.: -0.019 min  
 Response: 2398620  
 Conc: 20.91 ug/ml



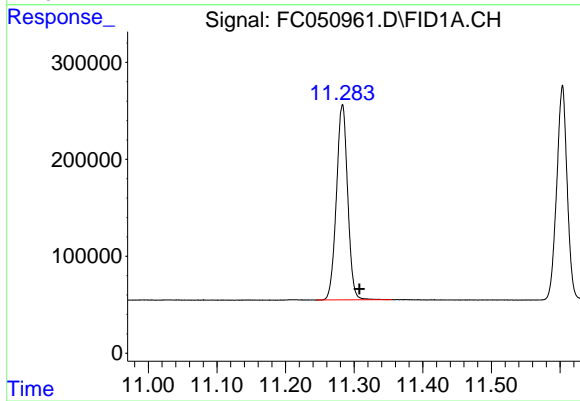
#6 n-Tetradecane (C14)

R.T.: 8.239 min  
 Delta R.T.: -0.022 min  
 Response: 2311152  
 Conc: 21.43 ug/ml



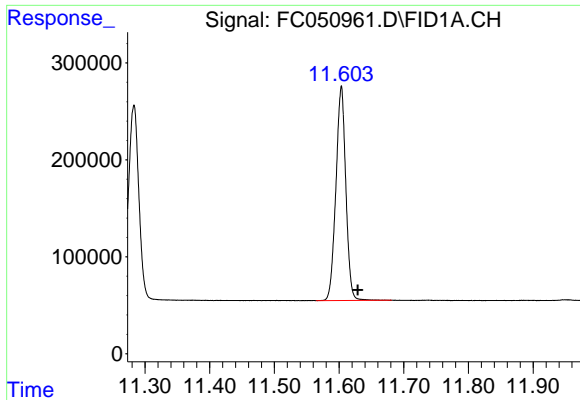
#7 n-Hexadecane (C16)

R.T.: 9.841 min  
 Delta R.T.: -0.022 min  
 Response: 2248803  
 Conc: 21.12 ug/ml



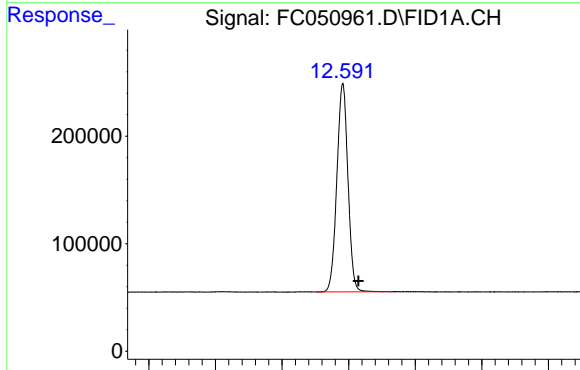
#8 n-Octadecane (C18)

R.T.: 11.283 min  
 Delta R.T.: -0.025 min  
 Response: 2298472  
 Conc: 20.43 ug/ml



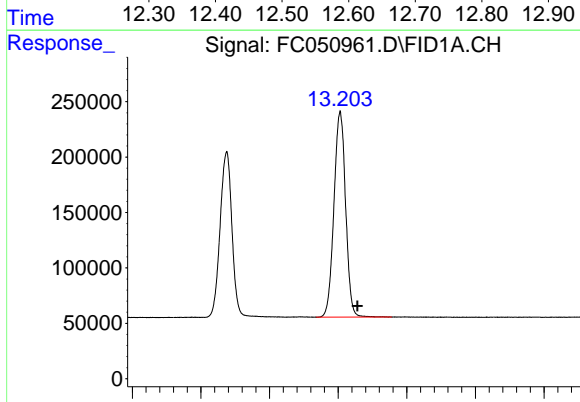
#9 ortho-Terphenyl (SURR)

R.T.: 11.603 min  
Delta R.T.: -0.026 min  
Response: 2350198  
Conc: 19.13 ug/ml



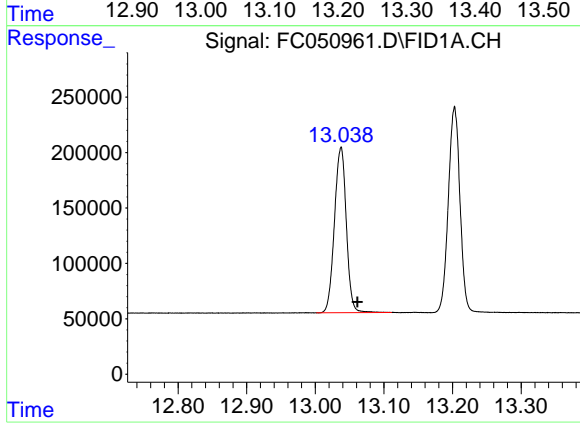
#10 n-Eicosane (C20)

R.T.: 12.591 min  
Delta R.T.: -0.024 min  
Response: 2239721  
Conc: 19.62 ug/ml



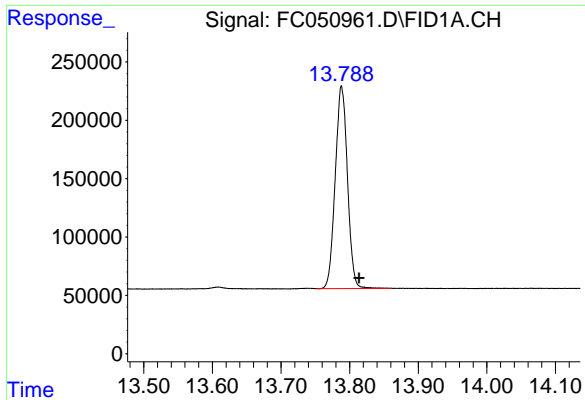
#11 n-Heneicosane (C21)

R.T.: 13.203 min  
Delta R.T.: -0.025 min  
Response: 2189736  
Conc: 19.19 ug/ml



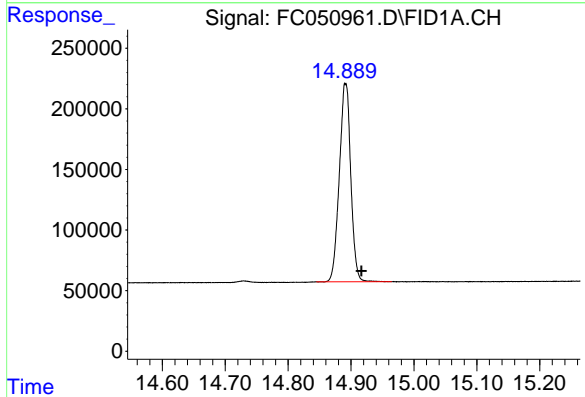
#12 1-chlorooctadecane (SURR)

R.T.: 13.037 min  
Delta R.T.: -0.024 min  
Response: 1792323  
Conc: 18.56 ug/ml



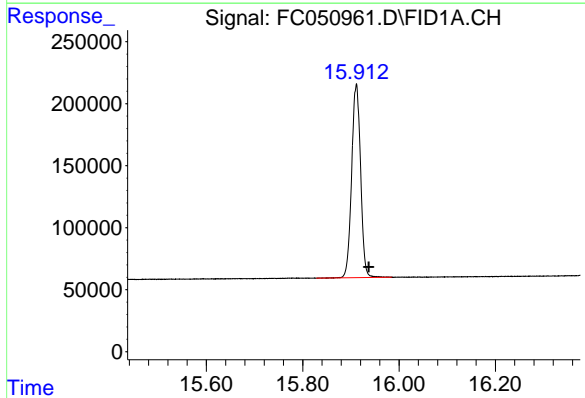
#13 n-Docosane (C22)

R.T.: 13.788 min  
Delta R.T.: -0.025 min  
Response: 2146043  
Conc: 18.80 ug/ml



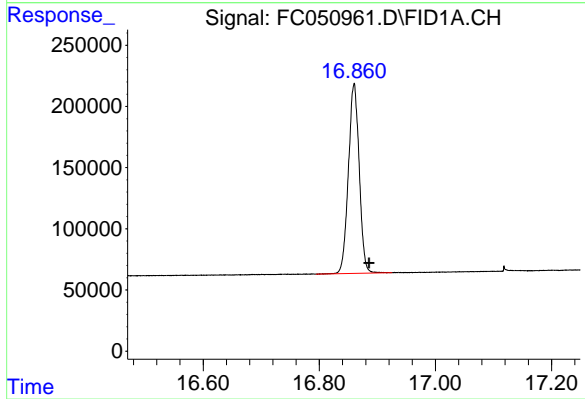
#14 n-Tetracosane (C24)

R.T.: 14.891 min  
Delta R.T.: -0.025 min  
Response: 2069931  
Conc: 18.13 ug/ml



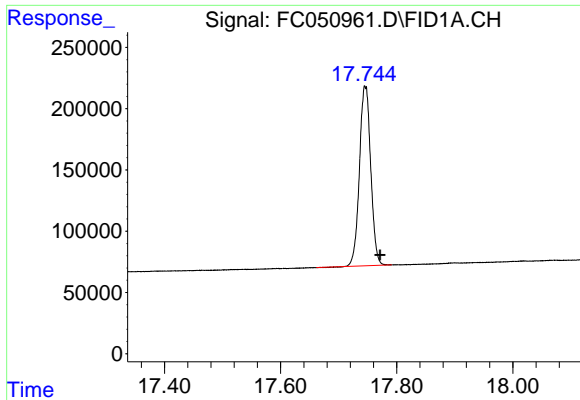
#15 n-Hexacosane (C26)

R.T.: 15.911 min  
Delta R.T.: -0.025 min  
Response: 2019238  
Conc: 17.81 ug/ml



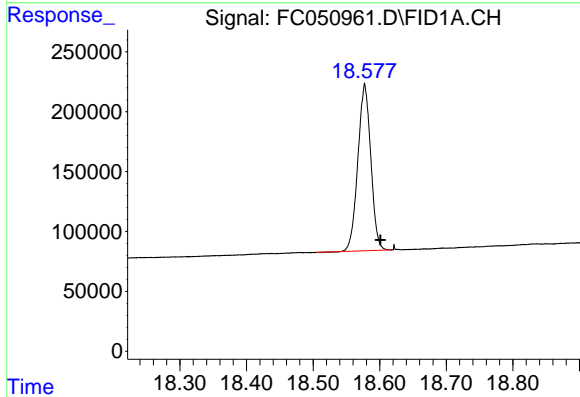
#16 n-Octacosane (C28)

R.T.: 16.860 min  
Delta R.T.: -0.026 min  
Response: 2002094  
Conc: 17.64 ug/ml



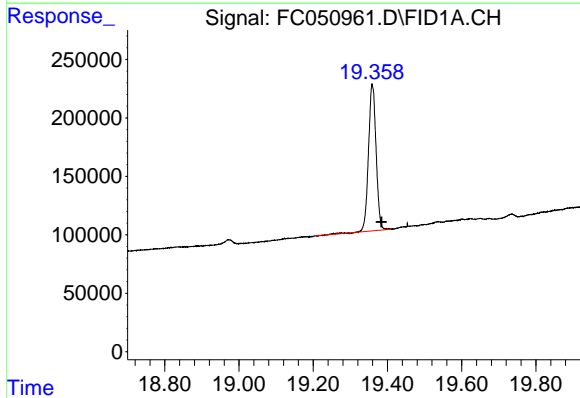
#17 n-Tricontane (C30)

R.T.: 17.746 min  
Delta R.T.: -0.026 min  
Response: 1975892  
Conc: 17.77 ug/ml



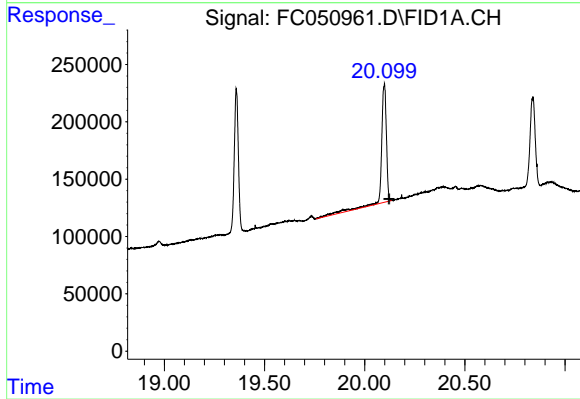
#18 n-Dotriacontane (C32)

R.T.: 18.578 min  
Delta R.T.: -0.024 min  
Response: 1873878  
Conc: 18.16 ug/ml



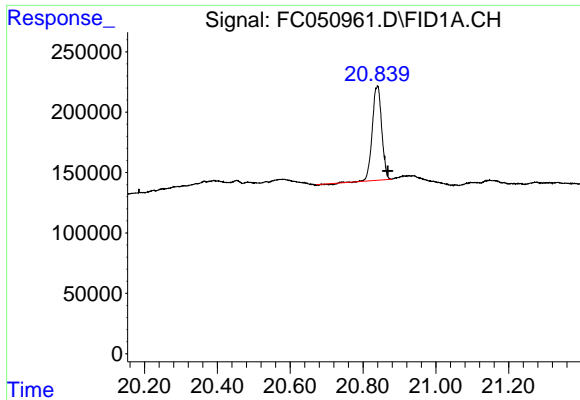
#19 n-Tetratriacontane (C34)

R.T.: 19.359 min  
Delta R.T.: -0.025 min  
Response: 1778649  
Conc: 18.48 ug/ml



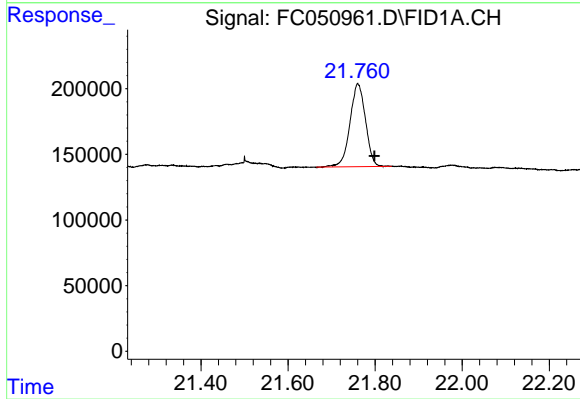
#20 n-Hexatriacontane (C36)

R.T.: 20.098 min  
Delta R.T.: -0.024 min  
Response: 1781546  
Conc: 19.83 ug/ml



#21 n-Octatriacontane (C38)

R.T.: 20.839 min  
Delta R.T.: -0.029 min  
Response: 1388494  
Conc: 16.70 ug/ml



#22 n-Tetracontane (C40)

R.T.: 21.761 min  
Delta R.T.: -0.038 min  
Response: 1560294  
Conc: 18.65 ug/ml