

Data Path : Z:\pestpcbsrv\HPCHEM1\FID_C\Data\FC112421AL\
 Data File : FC057064.D
 Signal(s) : FID1A.CH
 Acq On : 24 Nov 2021 16:17
 Operator : AJ\MA
 Sample : M4817-01
 Misc :
 ALS Vial : 3 Sample Multiplier: 1

Instrument :
 FID_C
 ClientSampleId :

Integration File: autoint1.e
 Quant Time: Nov 25 02:06:48 2021
 Quant Method : Z:\pestpcbsrv\HPCHEM1\FID_C\Method\Aliphatic EPH 111921.M
 Quant Title : GC Extractables
 QLast Update : Fri Nov 19 00:52:49 2021
 Response via : Initial Calibration
 Integrator: ChemStation 6890 Scale Mode: Large solvent peaks clipped

Volume Inj. : 1 ul
 Signal Phase : Rxi-1ms
 Signal Info : 20M x 0.18mm x 0.18um

Compound	R.T.	Response	Conc Units

System Monitoring Compounds			
12) S 1-chlorooctadecane (S...	13.025	2401264	26.377 ug/ml
Spiked Amount	50.000	Recovery	= 52.75%

Target Compounds

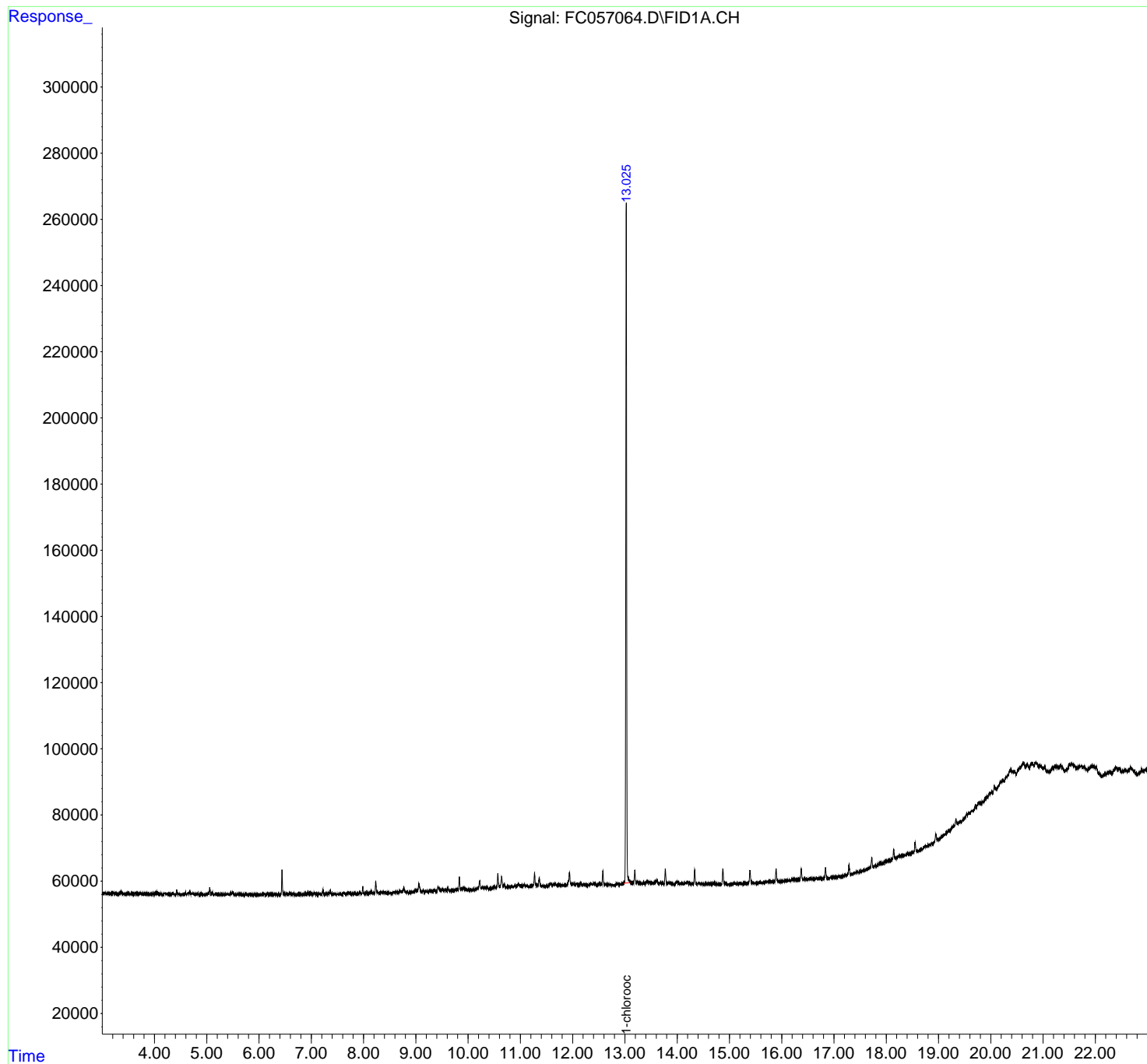
(f)=RT Delta > 1/2 Window (m)=manual int.

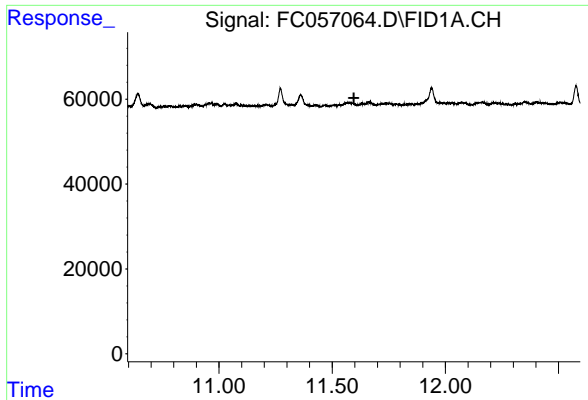
Data Path : Z:\pestpcbsrv\HPCHEM1\FID_C\Data\FC112421AL\
Data File : FC057064.D
Signal(s) : FID1A.CH
Acq On : 24 Nov 2021 16:17
Operator : AJ\MA
Sample : M4817-01
Misc :
ALS Vial : 3 Sample Multiplier: 1

Instrument :
FID_C
ClientSampleId :

Integration File: autoint1.e
Quant Time: Nov 25 02:06:48 2021
Quant Method : Z:\pestpcbsrv\HPCHEM1\FID_C\Method\Aliphatic EPH 111921.M
Quant Title : GC Extractables
QLast Update : Fri Nov 19 00:52:49 2021
Response via : Initial Calibration
Integrator: ChemStation 6890 Scale Mode: Large solvent peaks clipped

Volume Inj. : 1 ul
Signal Phase : Rxi-1ms
Signal Info : 20M x 0.18mm x 0.18um

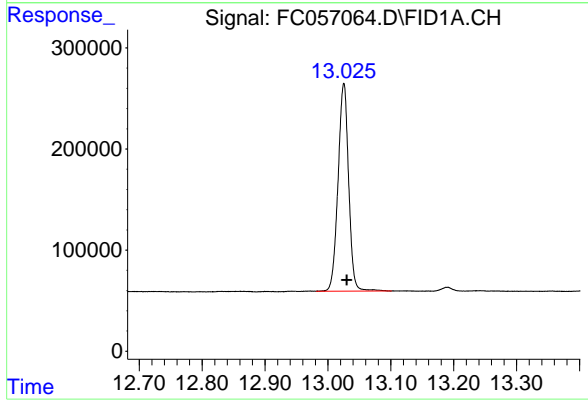




#9 ortho-Terphenyl (SURR)

R.T.: 0.000 min
 Exp R.T.: 11.596 min
 Response: 0
 Conc: N.D.

Instrument :
 FID_C
 ClientSampleId :



#12 1-chlorooctadecane (SURR)

R.T.: 13.025 min
 Delta R.T.: -0.005 min
 Response: 2401264
 Conc: 26.38 ug/ml