

Data Path : Z:\pestpcbsrv\HPCHEM1\FID_C\Data\FC112421AL\
 Data File : FC057073.D
 Signal(s) : FID1A.CH
 Acq On : 24 Nov 2021 22:24
 Operator : AJ\MA
 Sample : M4811-01DL 40X
 Misc :
 ALS Vial : 12 Sample Multiplier: 1

Instrument :
 FID_C
ClientSampleId :
 20071DL

Manual Integrations
APPROVED
 Reviewed By :Ankita Jodhani 11/26/2021
 Supervised By :mohammad ahmed 11/26/2021

Integration File: autoint1.e
 Quant Time: Nov 25 02:09:24 2021
 Quant Method : Z:\pestpcbsrv\HPCHEM1\FID_C\Method\Aliphatic EPH 111921.M
 Quant Title : GC Extractables
 QLast Update : Fri Nov 19 00:52:49 2021
 Response via : Initial Calibration
 Integrator: ChemStation 6890 Scale Mode: Large solvent peaks clipped

Volume Inj. : 1 ul
 Signal Phase : Rxi-1ms
 Signal Info : 20M x 0.18mm x 0.18um

Compound	R.T.	Response	Conc Units

System Monitoring Compounds			
9) S ortho-Terphenyl (SURR)	11.592	127204	1.096 ug/mlm
Spiked Amount	50.000	Recovery =	2.19%
12) S 1-chlorooctadecane (S...	13.024	87890	0.965 ug/mlm
Spiked Amount	50.000	Recovery =	1.93%

Target Compounds

(f)=RT Delta > 1/2 Window

(m)=manual int.

Data Path : Z:\pestpcbsrv\HPCHEM1\FID_C\Data\FC112421AL\
 Data File : FC057073.D
 Signal(s) : FID1A.CH
 Acq On : 24 Nov 2021 22:24
 Operator : AJ\MA
 Sample : M4811-01DL 40X
 Misc :
 ALS Vial : 12 Sample Multiplier: 1

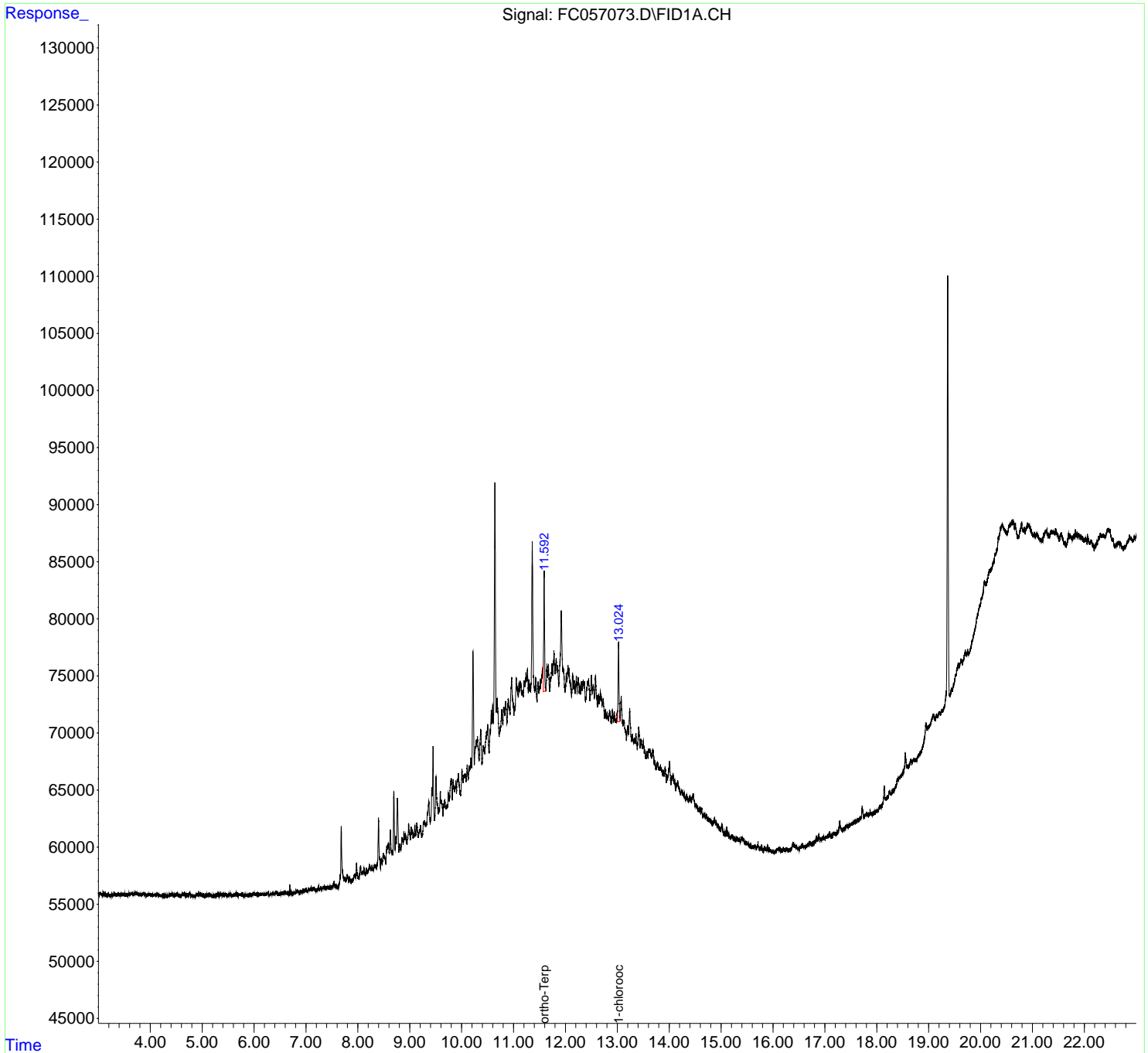
Instrument :
 FID_C
ClientSampleId :
 20071DL

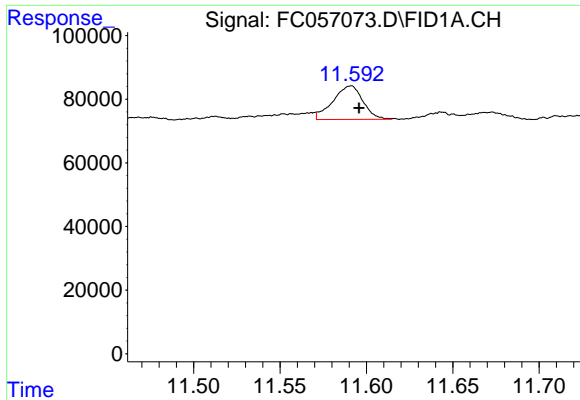
Manual Integrations
APPROVED

Reviewed By :Ankita Jodhani 11/26/2021
 Supervised By :mohammad ahmed 11/26/2021

Integration File: autoint1.e
 Quant Time: Nov 25 02:09:24 2021
 Quant Method : Z:\pestpcbsrv\HPCHEM1\FID_C\Method\Aliphatic EPH 111921.M
 Quant Title : GC Extractables
 QLast Update : Fri Nov 19 00:52:49 2021
 Response via : Initial Calibration
 Integrator: ChemStation 6890 Scale Mode: Large solvent peaks clipped

Volume Inj. : 1 ul
 Signal Phase : Rxi-1ms
 Signal Info : 20M x 0.18mm x 0.18um





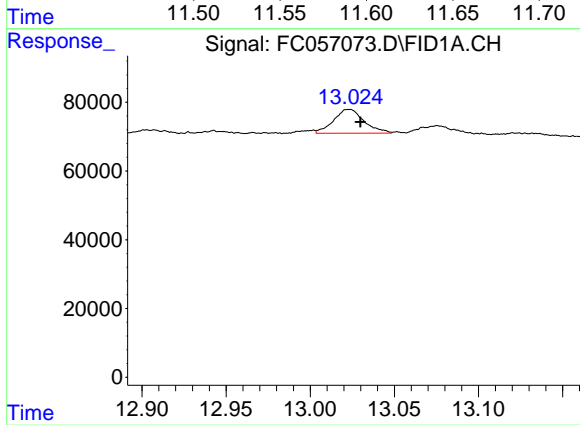
#9 ortho-Terphenyl (SURR)

R.T.: 11.592 min
 Delta R.T.: -0.004 min
 Response: 127204
 Conc: 1.10 ug/ml

Instrument : FID_C
 ClientSampleId : 20071DL

Manual Integrations
 APPROVED

Reviewed By :Ankita Jodhani 11/26/2021
 Supervised By :mohammad ahmed 11/26/2021



#12 1-chlorooctadecane (SURR)

R.T.: 13.024 min
 Delta R.T.: -0.006 min
 Response: 87890
 Conc: 0.97 ug/ml m