

Data Path : Z:\pestpcbsrv\HPCHEM1\FID_C\Data\FC113020AL\
 Data File : FC051023.D
 Signal(s) : FID1A.CH
 Acq On : 01 Dec 2020 1:55
 Operator : DD\AJ
 Sample : L4906-06
 Misc :
 ALS Vial : 21 Sample Multiplier: 1

Integration File: autoint1.e
 Quant Time: Dec 01 02:30:35 2020
 Quant Method : Z:\pestpcbsrv\HPCHEM1\FID_C\Method\Alaphatic EPH 112720.M
 Quant Title : GC Extractables
 QLast Update : Mon Nov 30 10:42:25 2020
 Response via : Initial Calibration
 Integrator: ChemStation 6890 Scale Mode: Large solvent peaks clipped

Volume Inj. : 1 ul
 Signal Phase : Rxi-1ms
 Signal Info : 20M x 0.18mm x 0.18um

Compound	R.T.	Response	Conc Units

System Monitoring Compounds			
9) S ortho-Terphenyl (SURR)	11.604	5460636	44.380 ug/ml
Spiked Amount	50.000	Recovery	= 88.76%
12) S 1-chlorooctadecane (S...	13.038	4126492	42.300 ug/ml
Spiked Amount	50.000	Recovery	= 84.60%

Target Compounds

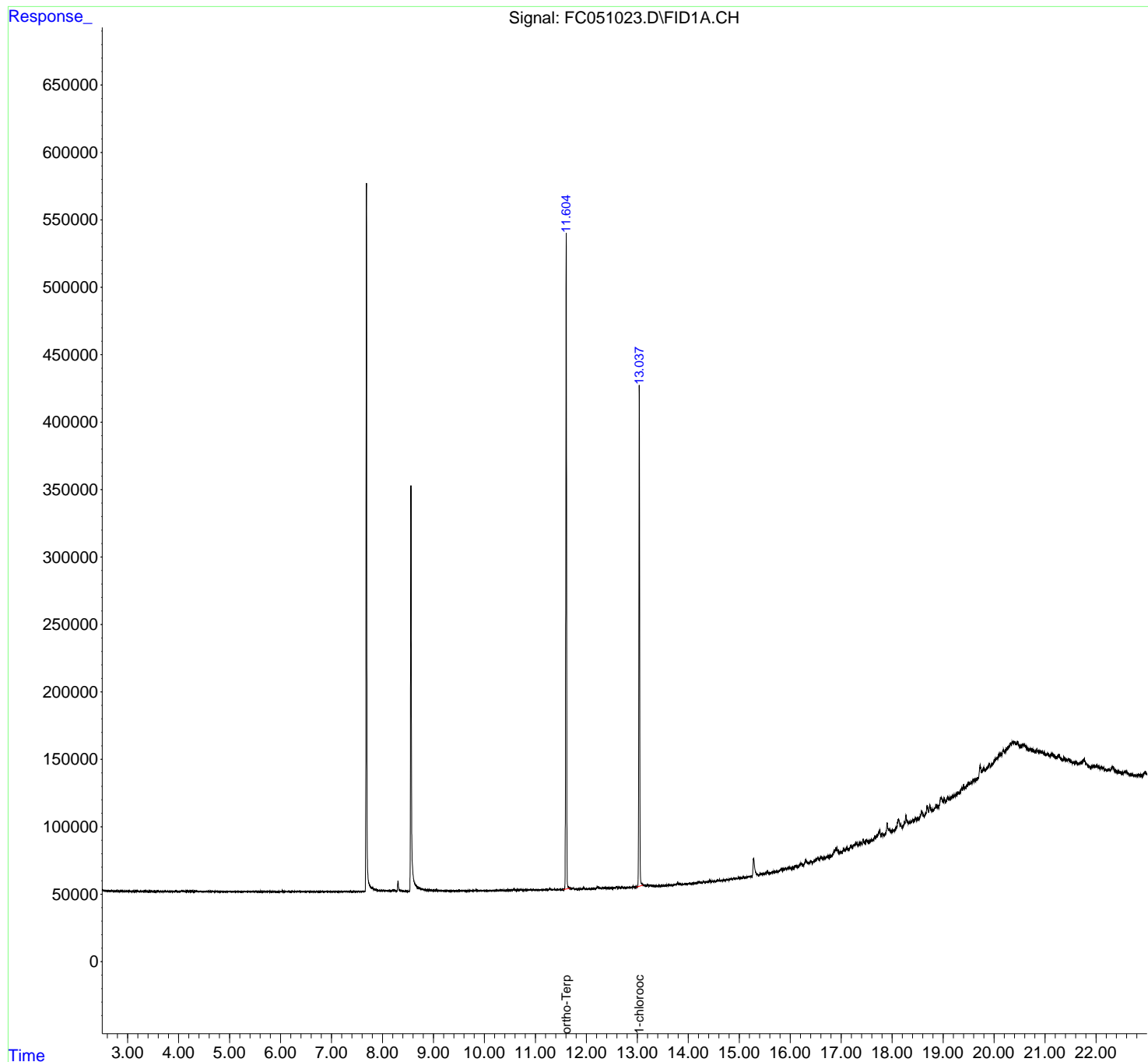
(f)=RT Delta > 1/2 Window

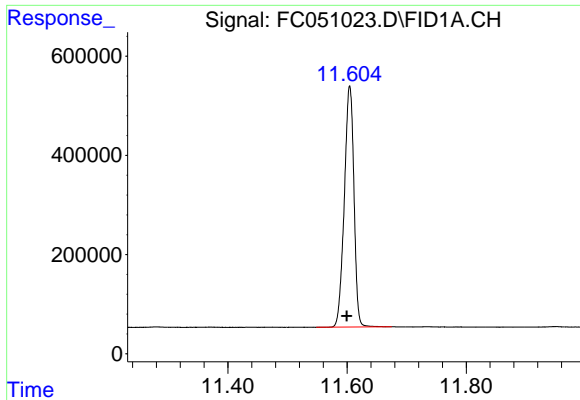
(m)=manual int.

Data Path : Z:\pestpcbsrv\HPCHEM1\FID_C\Data\FC113020AL\
Data File : FC051023.D
Signal(s) : FID1A.CH
Acq On : 01 Dec 2020 1:55
Operator : DD\AJ
Sample : L4906-06
Misc :
ALS Vial : 21 Sample Multiplier: 1

Integration File: autoint1.e
Quant Time: Dec 01 02:30:35 2020
Quant Method : Z:\pestpcbsrv\HPCHEM1\FID_C\Method\Alaphatic EPH 112720.M
Quant Title : GC Extractables
QLast Update : Mon Nov 30 10:42:25 2020
Response via : Initial Calibration
Integrator: ChemStation 6890 Scale Mode: Large solvent peaks clipped

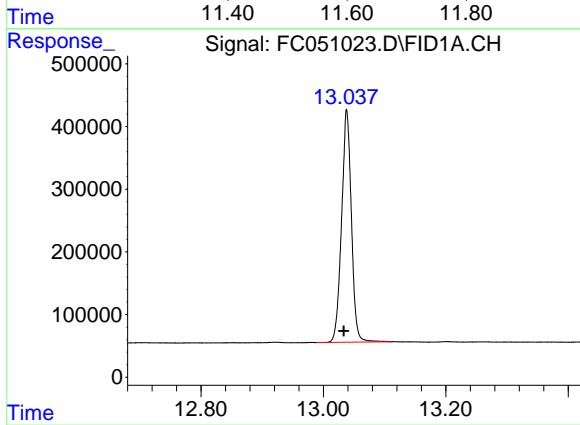
Volume Inj. : 1 ul
Signal Phase : Rxi-1ms
Signal Info : 20M x 0.18mm x 0.18um





#9 ortho-Terphenyl (SURR)

R.T.: 11.604 min
Delta R.T.: 0.005 min
Response: 5460636
Conc: 44.38 ug/ml



#12 1-chlorooctadecane (SURR)

R.T.: 13.038 min
Delta R.T.: 0.005 min
Response: 4126492
Conc: 42.30 ug/ml