

Data Path : Z:\pestpcbsrv\HPCHEM1\FID_C\Data\FC120221AL\
 Data File : FC057195.D
 Signal(s) : FID1A.CH
 Acq On : 03 Dec 2021 11:30
 Operator : AJ\MA
 Sample : M4873-03DL 50X
 Misc :
 ALS Vial : 5 Sample Multiplier: 1

Instrument :
 FID_C
ClientSampleId :
 A2-4-6.5DL

Manual Integrations
APPROVED
 Reviewed By :Ankita Jodhani 12/06/2021
 Supervised By :mohammad ahmed 12/06/2021

Integration File: sample.E
 Quant Time: Dec 03 12:50:02 2021
 Quant Method : Z:\pestpcbsrv\HPCHEM1\FID_C\Method\Aliphatic EPH 111921.M
 Quant Title : GC Extractables
 QLast Update : Fri Nov 19 00:52:49 2021
 Response via : Initial Calibration
 Integrator: ChemStation 6890 Scale Mode: Large solvent peaks clipped

Volume Inj. : 1 ul
 Signal Phase : Rxi-1ms
 Signal Info : 20M x 0.18mm x 0.18um

Compound	R.T.	Response	Conc Units

System Monitoring Compounds			
9) S ortho-Terphenyl (SURR)	11.587	81551	0.703 ug/mlm
Spiked Amount	50.000	Recovery =	1.41%
12) S 1-chlorooctadecane (S...	13.021	72009	0.791 ug/mlm
Spiked Amount	50.000	Recovery =	1.58%

Target Compounds

(f)=RT Delta > 1/2 Window

(m)=manual int.

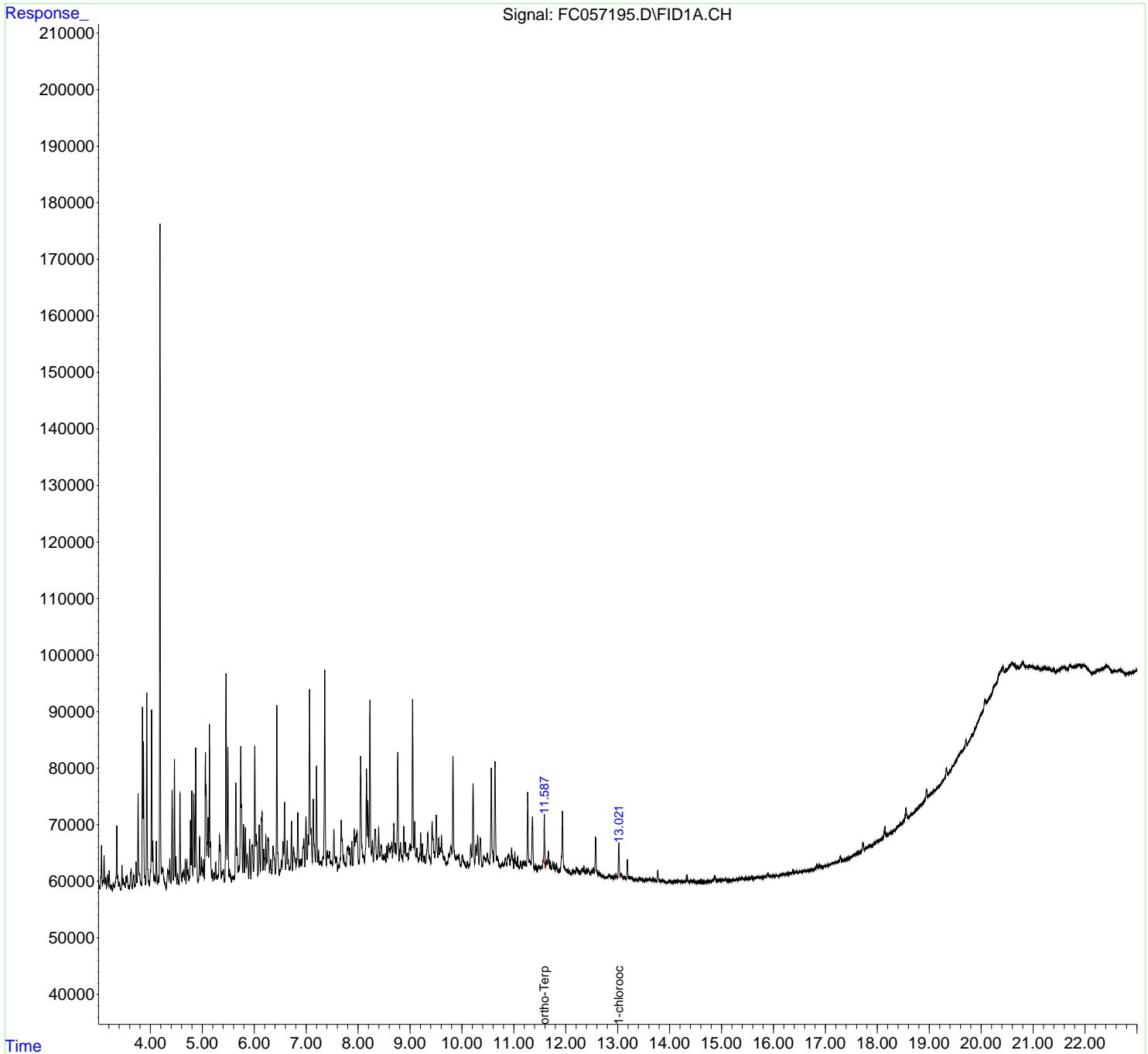
Data Path : Z:\pestpcbsrv\HPCHEM1\FID_C\Data\FC120221AL\
 Data File : FC057195.D
 Signal(s) : FID1A.CH
 Acq On : 03 Dec 2021 11:30
 Operator : AJ\MA
 Sample : M4873-03DL 50X
 Misc :
 ALS Vial : 5 Sample Multiplier: 1

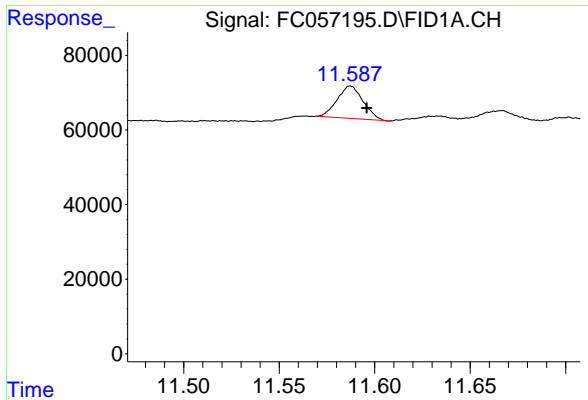
Instrument :
 FID_C
ClientSampleId :
 A2-4-6.5DL

Manual Integrations
APPROVED
 Reviewed By :Ankita Jodhani 12/06/2021
 Supervised By :mohammad ahmed 12/06/2021

Integration File: sample.E
 Quant Time: Dec 03 12:50:02 2021
 Quant Method : Z:\pestpcbsrv\HPCHEM1\FID_C\Method\Aliphatic EPH 111921.M
 Quant Title : GC Extractables
 QLast Update : Fri Nov 19 00:52:49 2021
 Response via : Initial Calibration
 Integrator: ChemStation 6890 Scale Mode: Large solvent peaks clipped

Volume Inj. : 1 ul
 Signal Phase : Rxi-1ms
 Signal Info : 20M x 0.18mm x 0.18um





#9 ortho-Terphenyl (SURR)

R.T.: 11.587 min
 Delta R.T.: -0.009 min
 Response: 81551
 Conc: 0.70 ug/ml

Instrument :

FID_C

ClientSampleId :

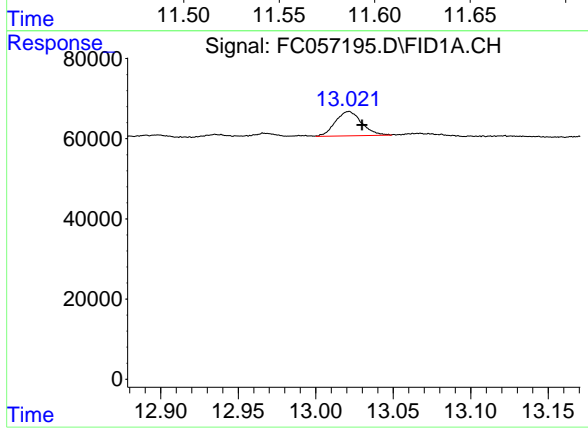
A2-4-6.5DL

Manual Integrations

APPROVED

Reviewed By :Ankita Jodhani 12/06/2021

Supervised By :mohammad ahmed 12/06/2021



#12 1-chlorooctadecane (SURR)

R.T.: 13.021 min
 Delta R.T.: -0.008 min
 Response: 72009
 Conc: 0.79 ug/ml m