

Data Path : Z:\pestpcbsrv\HPCHEM1\FID\_C\Data\FC120318AL\  
 Data File : FC037947.D  
 Signal(s) : FID1A.CH  
 Acq On : 03 Dec 2018 10:43  
 Operator : AJ\SJ  
 Sample : 20 PPM ALIPHATIC HC STD  
 Misc :  
 ALS Vial : 2 Sample Multiplier: 1

Instrument :  
 FID\_C  
 ClientSampled :

Integration File: autoint1.e  
 Quant Time: Dec 04 02:57:01 2018  
 Quant Method : Z:\pestpcbsrv\HPCHEM1\FID\_C\Method\Alaphatic EPH 111318.M  
 Quant Title : GC Extractables  
 QLast Update : Wed Nov 14 03:04:33 2018  
 Response via : Initial Calibration  
 Integrator: ChemStation 6890 Scale Mode: Large solvent peaks clipped

Volume Inj. : 1 ul  
 Signal Phase : Rxi-1ms  
 Signal Info : 20M x 0.18mm x 0.18um

| Compound                       | R.T.   | Response | Conc Units   |
|--------------------------------|--------|----------|--------------|
| -----                          |        |          |              |
| System Monitoring Compounds    |        |          |              |
| 9) S ortho-Terphenyl (SURR)    | 11.294 | 2473088  | 22.667 ug/ml |
| Spiked Amount                  | 50.000 | Recovery | = 45.33%     |
| 12) S 1-chlorooctadecane (S... | 12.738 | 1739799  | 20.292 ug/ml |
| Spiked Amount                  | 50.000 | Recovery | = 40.58%     |
| Target Compounds               |        |          |              |
| 1) T n-Nonane (C9)             | 3.126  | 1714887  | 20.907 ug/ml |
| 2) T n-Decane (C10)            | 4.185  | 1790210  | 21.726 ug/ml |
| 3) T A~Naphthalene (C11.7)     | 5.747  | 2216335  | 23.754 ug/ml |
| 4) T n-Dodecane (C12)          | 6.191  | 1870285  | 22.011 ug/ml |
| 5) T A~2-methylnaphthalene...  | 6.795  | 2227846  | 23.452 ug/ml |
| 6) T n-Tetradecane (C14)       | 7.973  | 1914871  | 21.414 ug/ml |
| 7) T n-Hexadecane (C16)        | 9.563  | 1962480  | 21.155 ug/ml |
| 8) T n-Octadecane (C18)        | 10.997 | 1973881  | 20.092 ug/ml |
| 10) T n-Eicosane (C20)         | 12.299 | 2004614  | 20.062 ug/ml |
| 11) T n-Heneicosane (C21)      | 12.908 | 2004560  | 20.281 ug/ml |
| 13) T n-Docosane (C22)         | 13.492 | 2010390  | 20.043 ug/ml |
| 14) T n-Tetracosane (C24)      | 14.589 | 2022441  | 19.905 ug/ml |
| 15) T n-Hexacosane (C26)       | 15.605 | 2008617  | 19.857 ug/ml |
| 16) T n-Octacosane (C28)       | 16.552 | 2026722  | 20.258 ug/ml |
| 17) T n-Tricontane (C30)       | 17.435 | 2090370  | 21.285 ug/ml |
| 18) T n-Dotriacontane (C32)    | 18.265 | 1978854  | 21.536 ug/ml |
| 19) T n-Tetratriacontane (C34) | 19.046 | 1650008  | 20.630 ug/ml |
| 20) T n-Hexatriacontane (C36)  | 19.781 | 1399843  | 19.464 ug/ml |
| 21) T n-Octatriacontane (C38)  | 20.484 | 1286589  | 18.284 ug/ml |
| 22) T n-Tetracontane (C40)     | 21.293 | 1329360  | 18.567 ug/ml |
| -----                          |        |          |              |

(f)=RT Delta > 1/2 Window

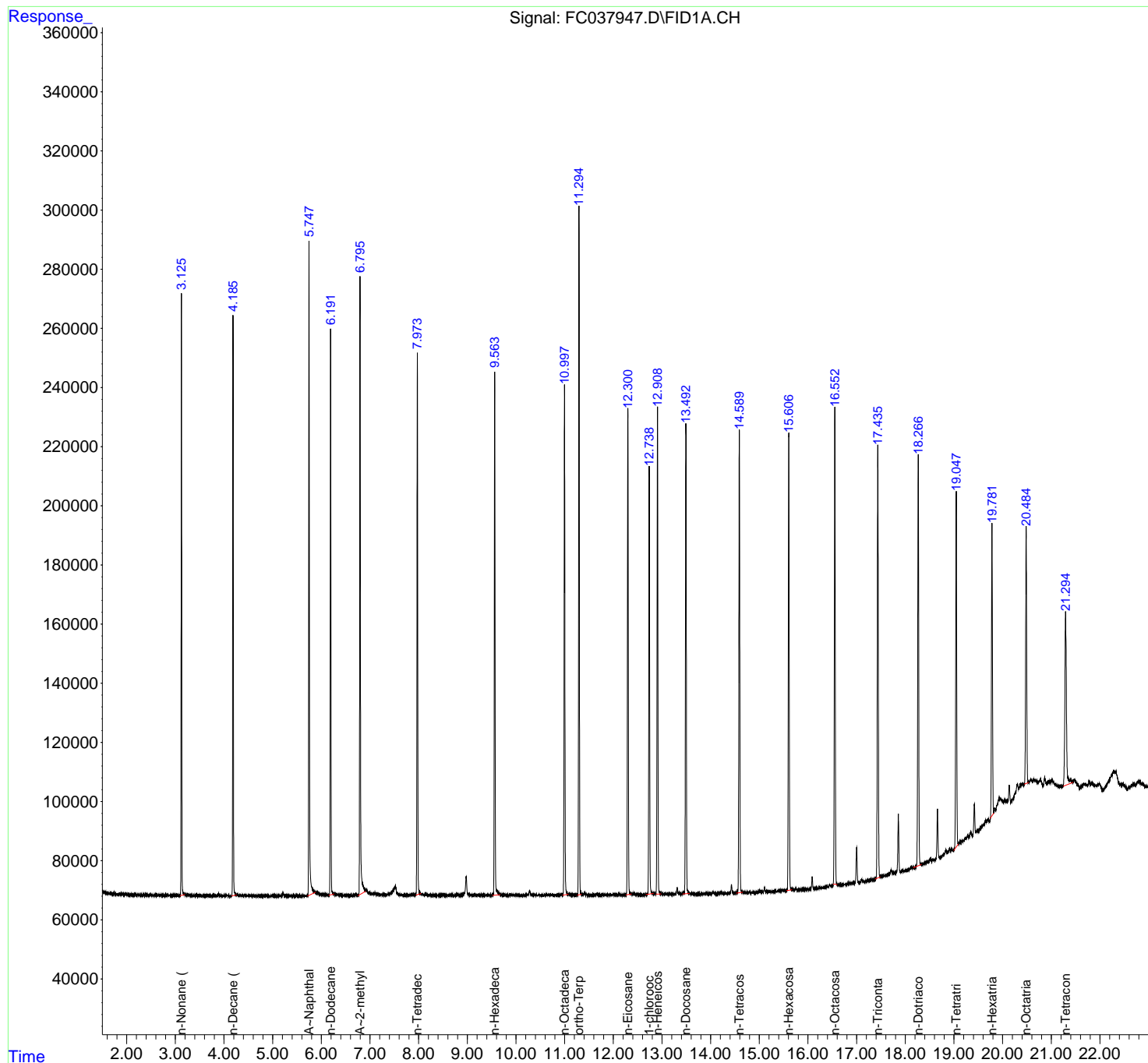
(m)=manual int.

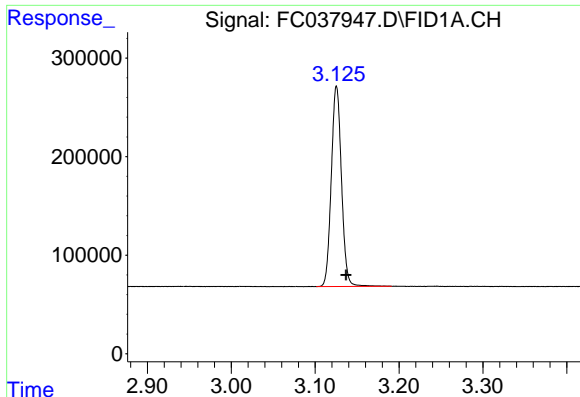
Data Path : Z:\pestpcbsrv\HPCHEM1\FID\_C\Data\FC120318AL\  
Data File : FC037947.D  
Signal(s) : FID1A.CH  
Acq On : 03 Dec 2018 10:43  
Operator : AJ\SJ  
Sample : 20 PPM ALIPHATIC HC STD  
Misc :  
ALS Vial : 2 Sample Multiplier: 1

Instrument :  
FID\_C  
ClientSampled :

Integration File: autoint1.e  
Quant Time: Dec 04 02:57:01 2018  
Quant Method : Z:\pestpcbsrv\HPCHEM1\FID\_C\Method\Aliphatic EPH 111318.M  
Quant Title : GC Extractables  
QLast Update : Wed Nov 14 03:04:33 2018  
Response via : Initial Calibration  
Integrator: ChemStation 6890 Scale Mode: Large solvent peaks clipped

Volume Inj. : 1 ul  
Signal Phase : Rxi-1ms  
Signal Info : 20M x 0.18mm x 0.18um

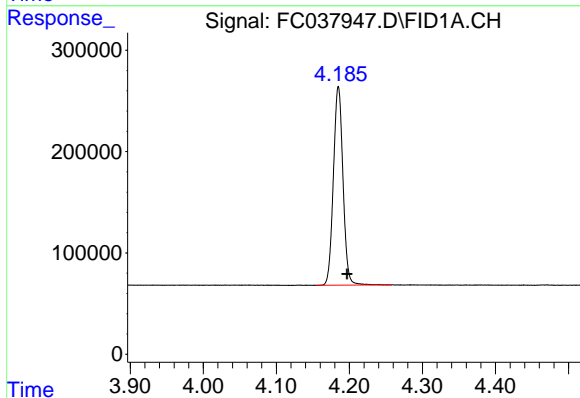




#1 n-Nonane (C9)

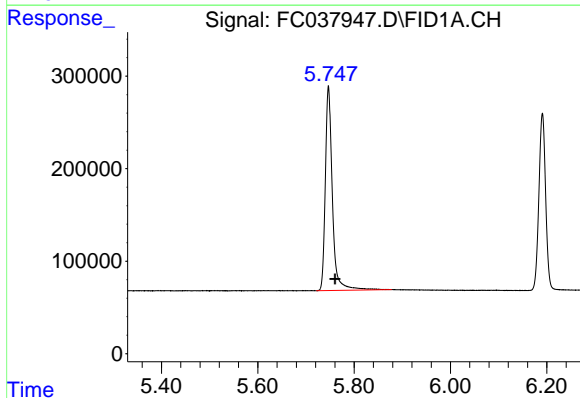
R.T.: 3.126 min  
 Delta R.T.: -0.011 min  
 Response: 1714887  
 Conc: 20.91 ug/ml

Instrument :  
 FID\_C  
 ClientSampleId :



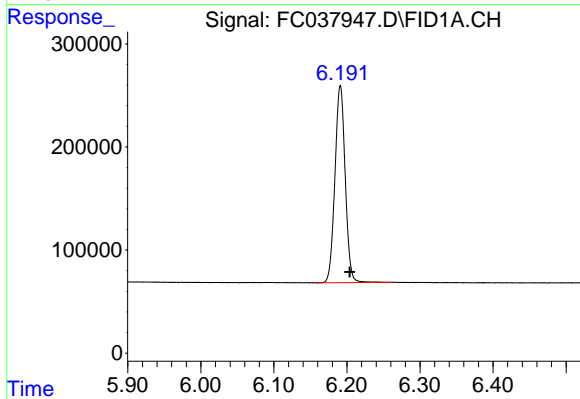
#2 n-Decane (C10)

R.T.: 4.185 min  
 Delta R.T.: -0.012 min  
 Response: 1790210  
 Conc: 21.73 ug/ml



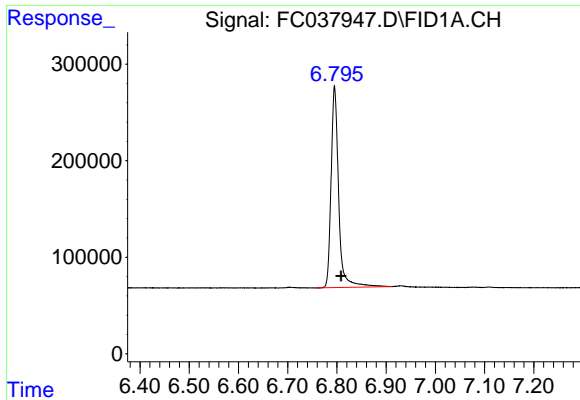
#3 A~Naphthalene (C11.7)

R.T.: 5.747 min  
 Delta R.T.: -0.013 min  
 Response: 2216335  
 Conc: 23.75 ug/ml



#4 n-Dodecane (C12)

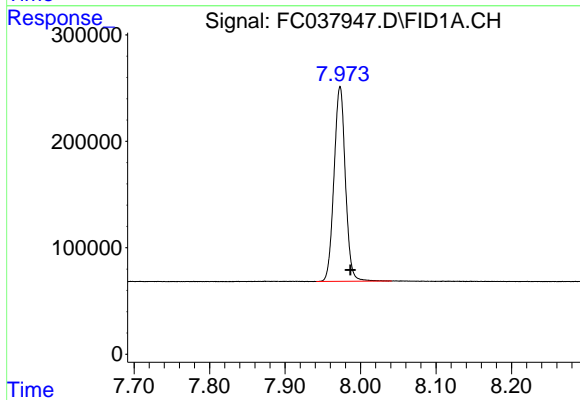
R.T.: 6.191 min  
 Delta R.T.: -0.013 min  
 Response: 1870285  
 Conc: 22.01 ug/ml



#5 A~2-methylnaphthalene (C12.89)

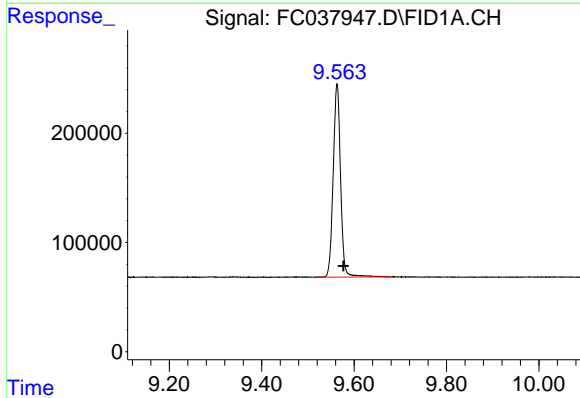
R.T.: 6.795 min  
 Delta R.T.: -0.013 min  
 Response: 2227846  
 Conc: 23.45 ug/ml

Instrument :  
 FID\_C  
 ClientSampleId :



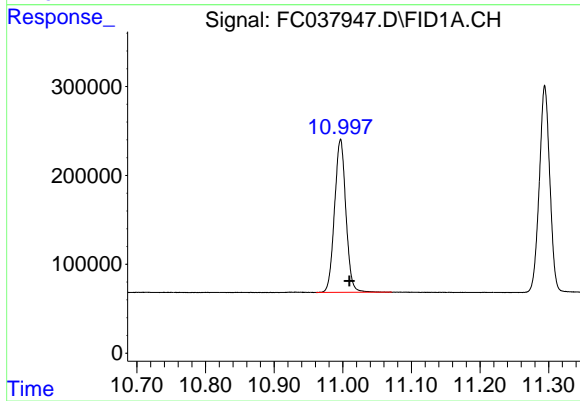
#6 n-Tetradecane (C14)

R.T.: 7.973 min  
 Delta R.T.: -0.014 min  
 Response: 1914871  
 Conc: 21.41 ug/ml



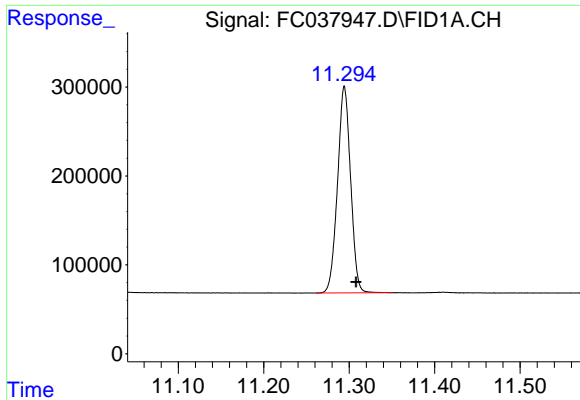
#7 n-Hexadecane (C16)

R.T.: 9.563 min  
 Delta R.T.: -0.014 min  
 Response: 1962480  
 Conc: 21.15 ug/ml



#8 n-Octadecane (C18)

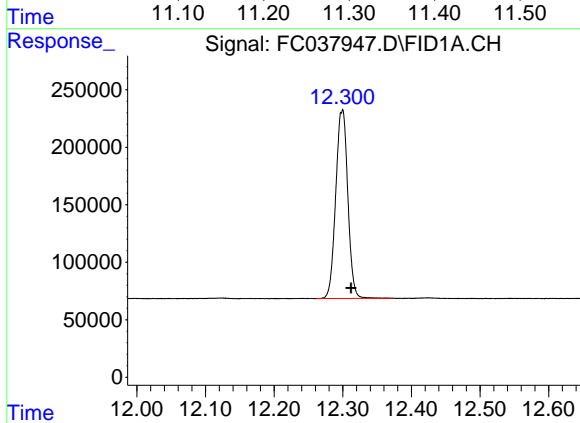
R.T.: 10.997 min  
 Delta R.T.: -0.013 min  
 Response: 1973881  
 Conc: 20.09 ug/ml



#9 ortho-Terphenyl (SURR)

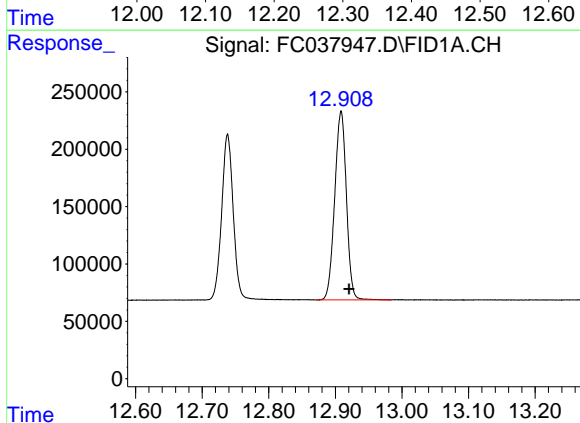
R.T.: 11.294 min  
 Delta R.T.: -0.014 min  
 Response: 2473088  
 Conc: 22.67 ug/ml

Instrument :  
 FID\_C  
 ClientSampleId :



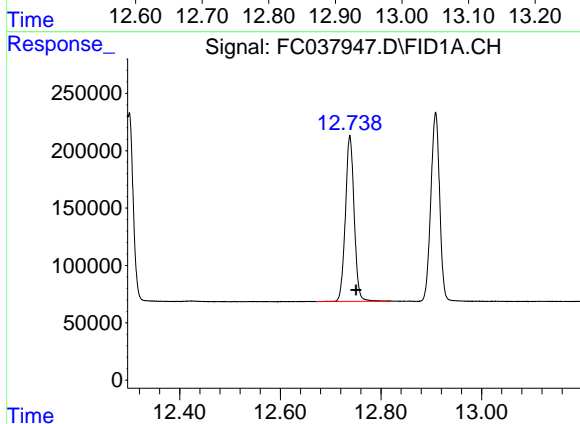
#10 n-Eicosane (C20)

R.T.: 12.299 min  
 Delta R.T.: -0.013 min  
 Response: 2004614  
 Conc: 20.06 ug/ml



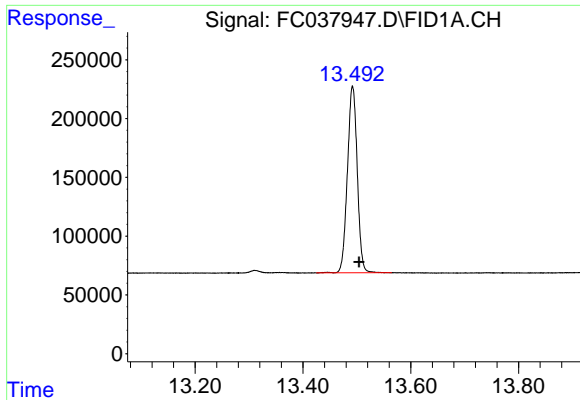
#11 n-Heneicosane (C21)

R.T.: 12.908 min  
 Delta R.T.: -0.012 min  
 Response: 2004560  
 Conc: 20.28 ug/ml



#12 1-chlorooctadecane (SURR)

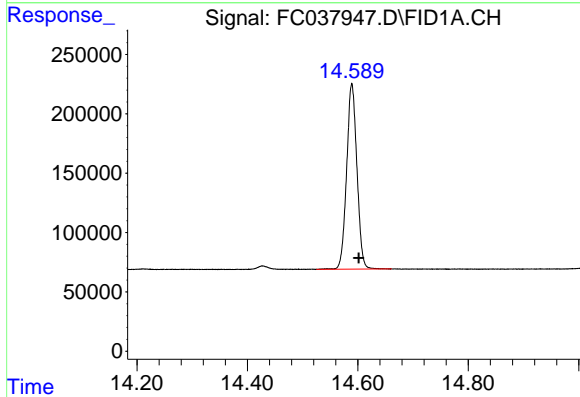
R.T.: 12.738 min  
 Delta R.T.: -0.012 min  
 Response: 1739799  
 Conc: 20.29 ug/ml



#13 n-Docosane (C22)

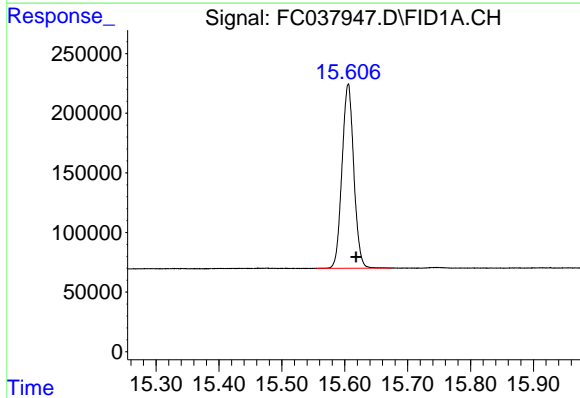
R.T.: 13.492 min  
Delta R.T.: -0.012 min  
Response: 2010390  
Conc: 20.04 ug/ml

Instrument :  
FID\_C  
ClientSampleId :



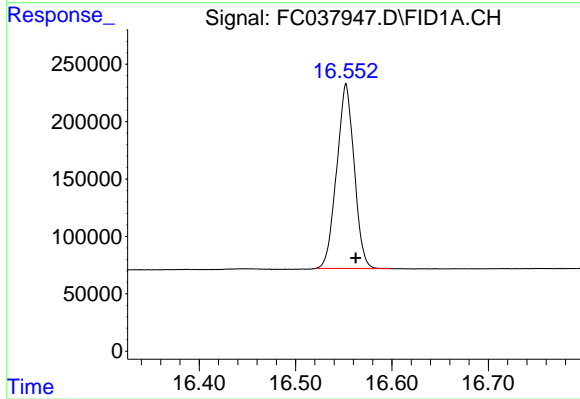
#14 n-Tetracosane (C24)

R.T.: 14.589 min  
Delta R.T.: -0.012 min  
Response: 2022441  
Conc: 19.90 ug/ml



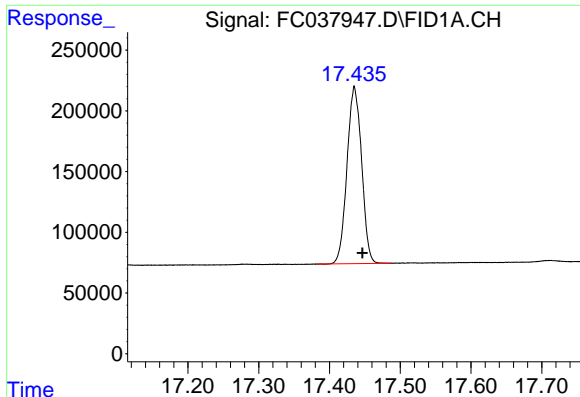
#15 n-Hexacosane (C26)

R.T.: 15.605 min  
Delta R.T.: -0.012 min  
Response: 2008617  
Conc: 19.86 ug/ml



#16 n-Octacosane (C28)

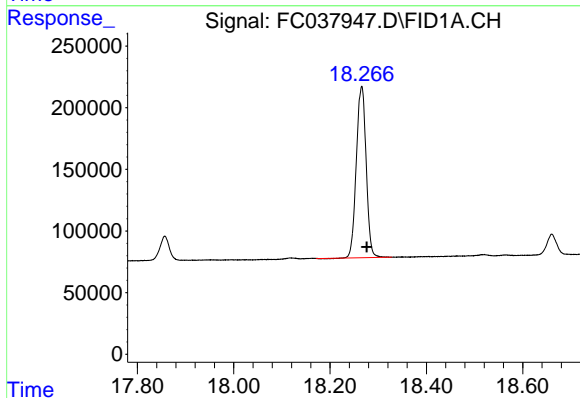
R.T.: 16.552 min  
Delta R.T.: -0.010 min  
Response: 2026722  
Conc: 20.26 ug/ml



#17 n-Tricontane (C30)

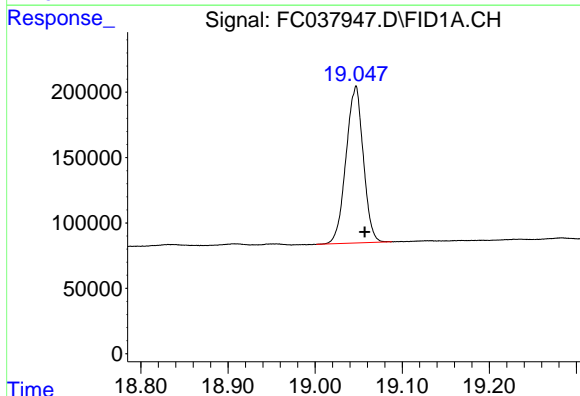
R.T.: 17.435 min  
Delta R.T.: -0.011 min  
Response: 2090370  
Conc: 21.29 ug/ml

Instrument :  
FID\_C  
ClientSampled :



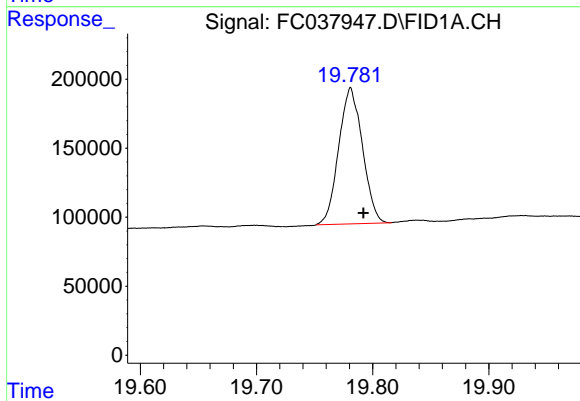
#18 n-Dotriacontane (C32)

R.T.: 18.265 min  
Delta R.T.: -0.011 min  
Response: 1978854  
Conc: 21.54 ug/ml



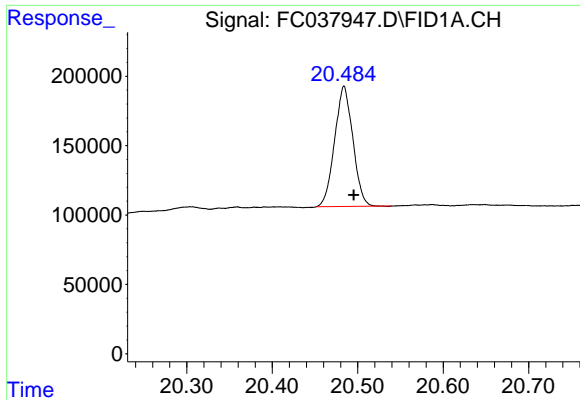
#19 n-Tetratriacontane (C34)

R.T.: 19.046 min  
Delta R.T.: -0.011 min  
Response: 1650008  
Conc: 20.63 ug/ml



#20 n-Hexatriacontane (C36)

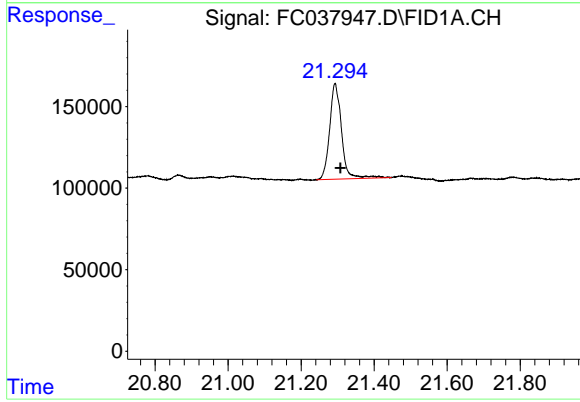
R.T.: 19.781 min  
Delta R.T.: -0.011 min  
Response: 1399843  
Conc: 19.46 ug/ml



#21 n-Octatriacontane (C38)

R.T.: 20.484 min  
Delta R.T.: -0.011 min  
Response: 1286589  
Conc: 18.28 ug/ml

Instrument :  
FID\_C  
ClientSampleId :



#22 n-Tetracontane (C40)

R.T.: 21.293 min  
Delta R.T.: -0.015 min  
Response: 1329360  
Conc: 18.57 ug/ml