

Data Path : Z:\pestpcbsrv\HPCHEM1\FID_C\Data\FC120318AL\
 Data File : FC037974.D
 Signal(s) : FID1A.CH
 Acq On : 04 Dec 2018 4:26
 Operator : AJ\SJ
 Sample : J6003-25
 Misc :
 ALS Vial : 27 Sample Multiplier: 1

Instrument :
 FID_C
 ClientSampleId :

Integration File: autoint1.e
 Quant Time: Dec 04 05:05:54 2018
 Quant Method : Z:\pestpcbsrv\HPCHEM1\FID_C\Method\Alaphatic EPH 111318.M
 Quant Title : GC Extractables
 QLast Update : Wed Nov 14 03:04:33 2018
 Response via : Initial Calibration
 Integrator: ChemStation 6890 Scale Mode: Large solvent peaks clipped

Volume Inj. : 1 ul
 Signal Phase : Rxi-1ms
 Signal Info : 20M x 0.18mm x 0.18um

Compound	R.T.	Response	Conc Units

System Monitoring Compounds			
12) S 1-chlorooctadecane (S...	12.735	2981620	34.775 ug/ml
Spiked Amount	50.000	Recovery	= 69.55%
Target Compounds			

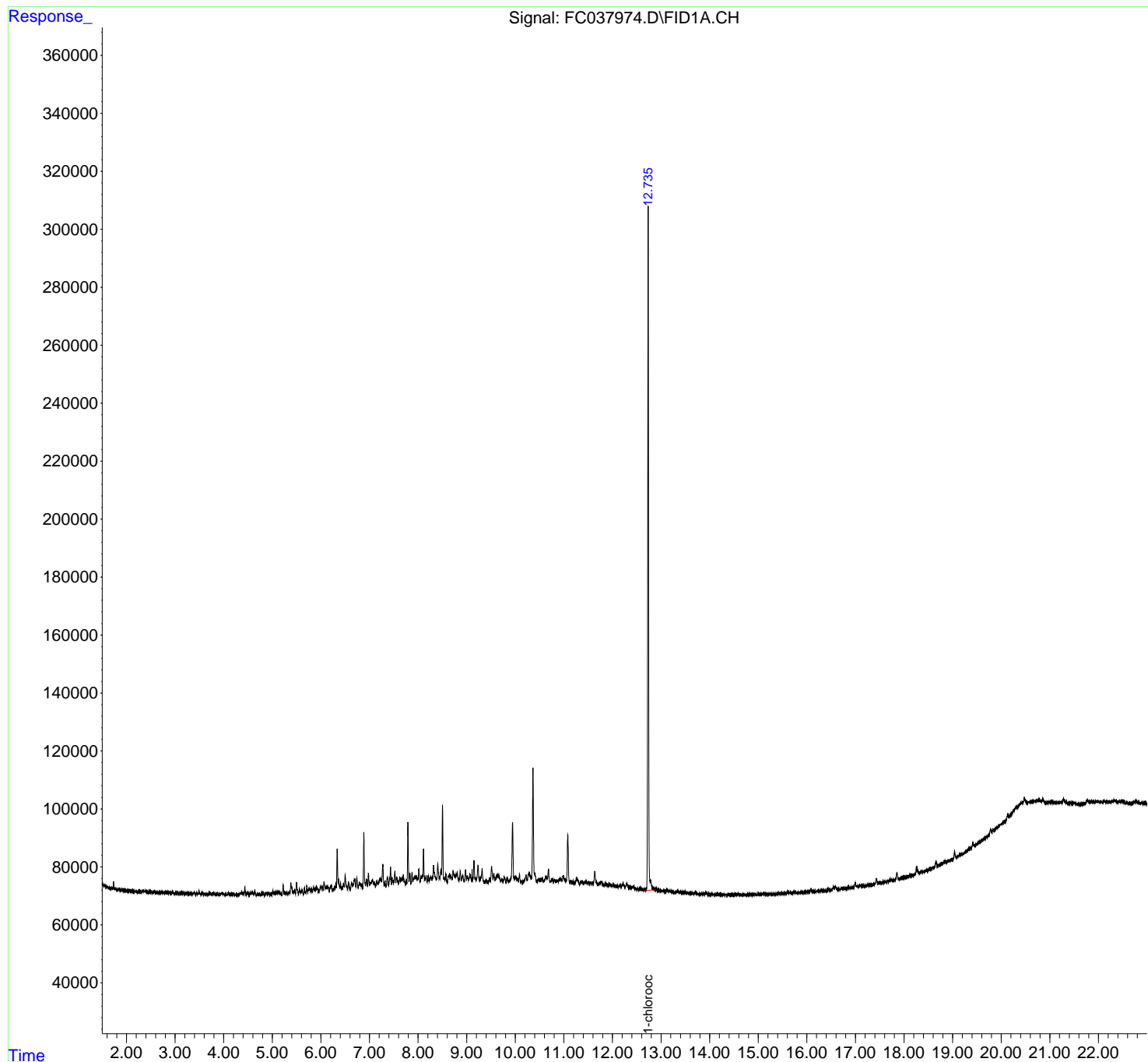
(f)=RT Delta > 1/2 Window (m)=manual int.

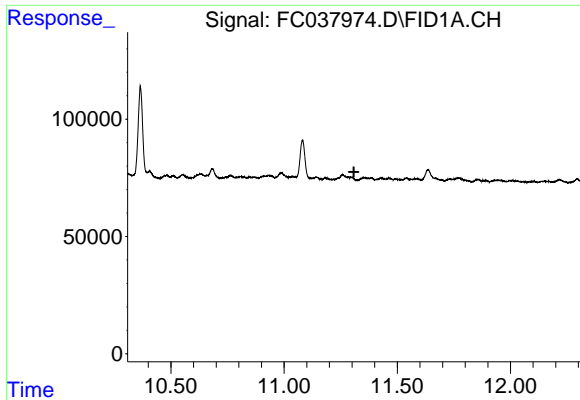
Data Path : Z:\pestpcbsrv\HPCHEM1\FID_C\Data\FC120318AL\
 Data File : FC037974.D
 Signal(s) : FID1A.CH
 Acq On : 04 Dec 2018 4:26
 Operator : AJ\SJ
 Sample : J6003-25
 Misc :
 ALS Vial : 27 Sample Multiplier: 1

Instrument :
 FID_C
 ClientSampleId :

Integration File: autoint1.e
 Quant Time: Dec 04 05:05:54 2018
 Quant Method : Z:\pestpcbsrv\HPCHEM1\FID_C\Method\Aliphatic EPH 111318.M
 Quant Title : GC Extractables
 QLast Update : Wed Nov 14 03:04:33 2018
 Response via : Initial Calibration
 Integrator: ChemStation 6890 Scale Mode: Large solvent peaks clipped

Volume Inj. : 1 ul
 Signal Phase : Rxi-1ms
 Signal Info : 20M x 0.18mm x 0.18um

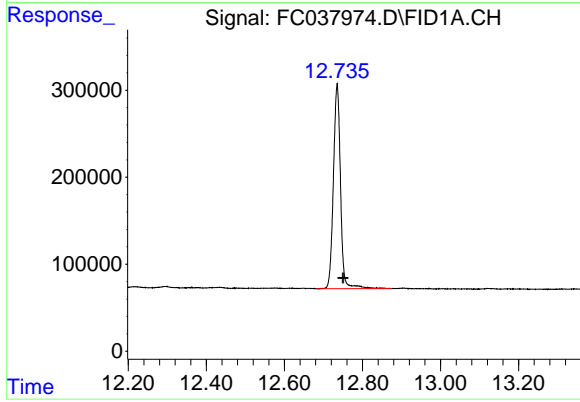




#9 ortho-Terphenyl (SURR)

R.T.: 0.000 min
Exp R.T.: 11.308 min
Response: 0
Conc: N.D.

Instrument :
FID_C
ClientSampleId :



#12 1-chlorooctadecane (SURR)

R.T.: 12.735 min
Delta R.T.: -0.015 min
Response: 2981620
Conc: 34.78 ug/ml