

Data Path : Z:\pestpcbsrv\HPCHEM1\FID_C\Data\FC120320AL\
 Data File : FC051120.D
 Signal(s) : FID1A.CH
 Acq On : 04 Dec 2020 6:37
 Operator : DD\AJ
 Sample : L4915-02DL 5X
 Misc :
 ALS Vial : 29 Sample Multiplier: 1

Instrument :
 FID_C
 ClientSampleId :
 OR-03-12220-EPH-2DL

Integration File: autoint1.e
 Quant Time: Dec 04 07:41:38 2020
 Quant Method : Z:\pestpcbsrv\HPCHEM1\FID_C\Method\Alaphatic EPH 112720.M
 Quant Title : GC Extractables
 QLast Update : Mon Nov 30 10:42:25 2020
 Response via : Initial Calibration
 Integrator: ChemStation 6890 Scale Mode: Large solvent peaks clipped

Volume Inj. : 1 ul
 Signal Phase : Rxi-1ms
 Signal Info : 20M x 0.18mm x 0.18um

Compound	R.T.	Response	Conc Units

System Monitoring Compounds			
9) S ortho-Terphenyl (SURR)	11.594	658738	5.354 ug/ml
Spiked Amount	50.000	Recovery	= 10.71%
12) S 1-chlorooctadecane (S...	13.028	506901	5.196 ug/ml
Spiked Amount	50.000	Recovery	= 10.39%

Target Compounds

(f)=RT Delta > 1/2 Window

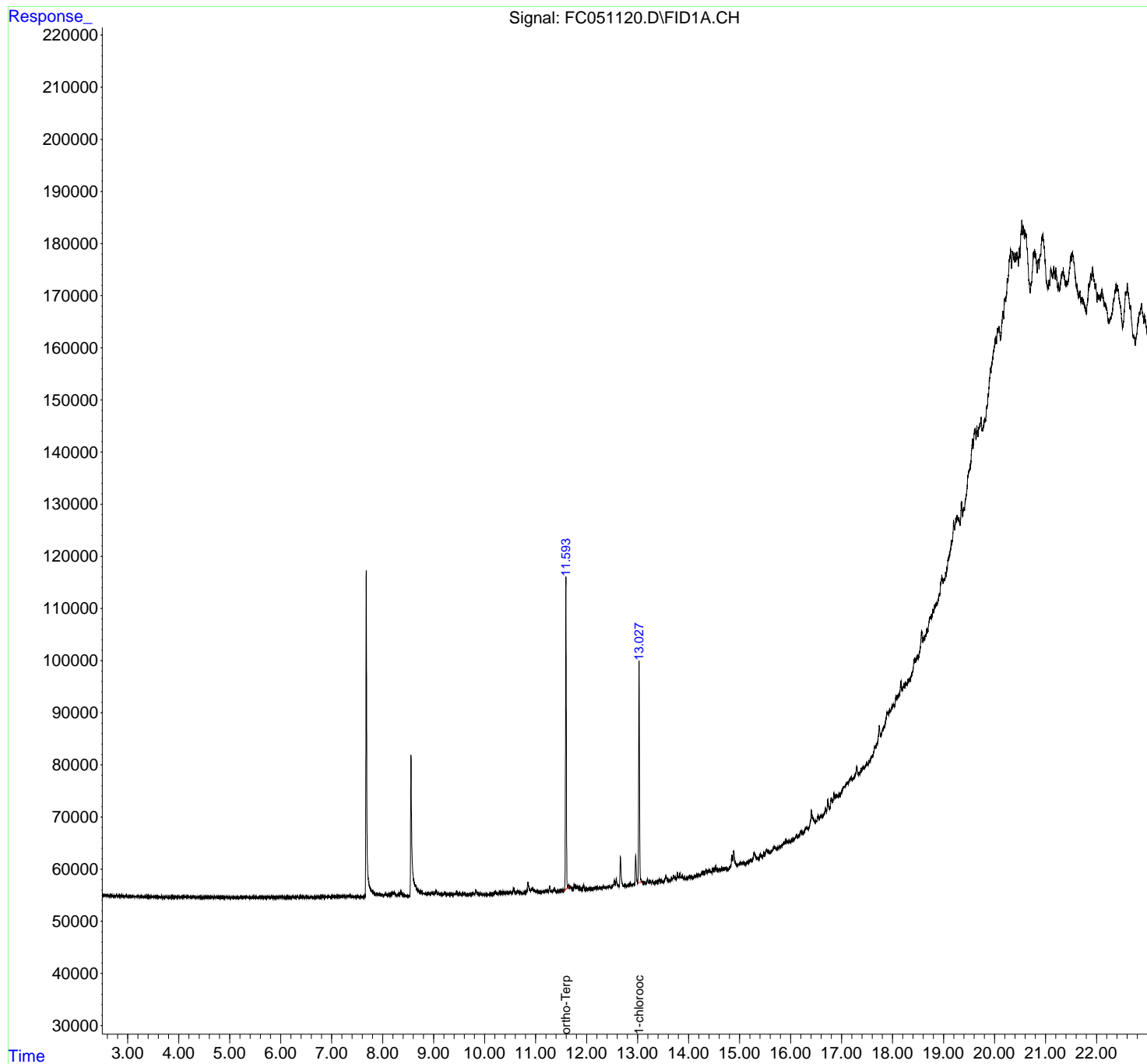
(m)=manual int.

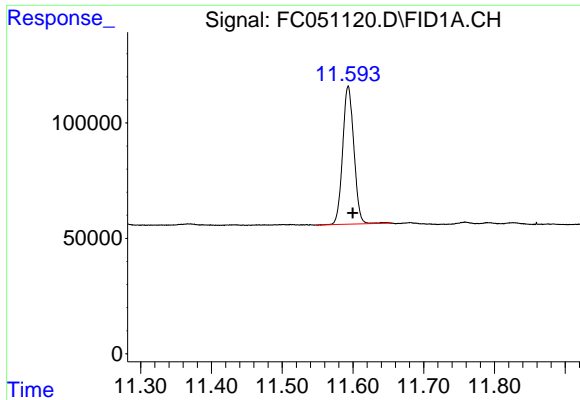
Data Path : Z:\pestpcbsrv\HPCHEM1\FID_C\Data\FC120320AL\
Data File : FC051120.D
Signal(s) : FID1A.CH
Acq On : 04 Dec 2020 6:37
Operator : DD\AJ
Sample : L4915-02DL 5X
Misc :
ALS Vial : 29 Sample Multiplier: 1

Instrument :
FID_C
ClientSampled :
OR-03-12220-EPH-2DL

Integration File: autoint1.e
Quant Time: Dec 04 07:41:38 2020
Quant Method : Z:\pestpcbsrv\HPCHEM1\FID_C\Method\Aliphatic EPH 112720.M
Quant Title : GC Extractables
QLast Update : Mon Nov 30 10:42:25 2020
Response via : Initial Calibration
Integrator: ChemStation 6890 Scale Mode: Large solvent peaks clipped

Volume Inj. : 1 ul
Signal Phase : Rxi-1ms
Signal Info : 20M x 0.18mm x 0.18um

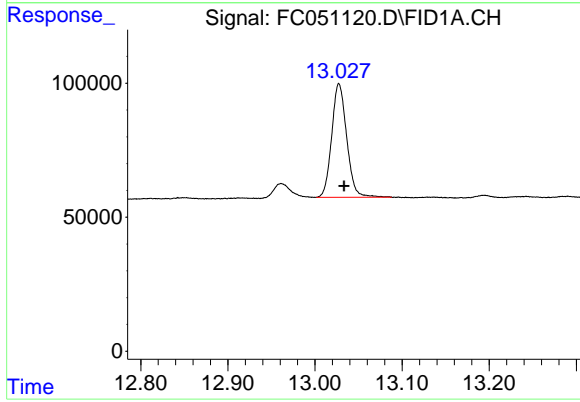




#9 ortho-Terphenyl (SURR)

R.T.: 11.594 min
Delta R.T.: -0.006 min
Response: 658738
Conc: 5.35 ug/ml

Instrument :
FID_C
ClientSampleId :
OR-03-12220-EPH-2DL



#12 1-chlorooctadecane (SURR)

R.T.: 13.028 min
Delta R.T.: -0.005 min
Response: 506901
Conc: 5.20 ug/ml