

Data Path : Z:\pestpcbsrv\HPCHEM1\FID_C\Data\FC120321AL\
Data File : FC057206.D
Signal(s) : FID1A.CH
Acq On : 03 Dec 2021 18:52
Operator : AJ\MA
Sample : I.BLK
Misc :
ALS Vial : 1 Sample Multiplier: 1

Integration File: autoint1.e
Quant Time: Dec 03 21:47:57 2021
Quant Method : Z:\pestpcbsrv\HPCHEM1\FID_C\Method\Aliphatic EPH 111921.M
Quant Title : GC Extractables
QLast Update : Fri Nov 19 00:52:49 2021
Response via : Initial Calibration
Integrator: ChemStation 6890 Scale Mode: Large solvent peaks clipped

Volume Inj. : 1 ul
Signal Phase : Rxi-1ms
Signal Info : 20M x 0.18mm x 0.18um

| Compound | R.T. | Response | Conc Units |
|-----------------------------|------|----------|------------|
| ----- | | | |
| System Monitoring Compounds | | | |
| Target Compounds | | | |
| ----- | | | |

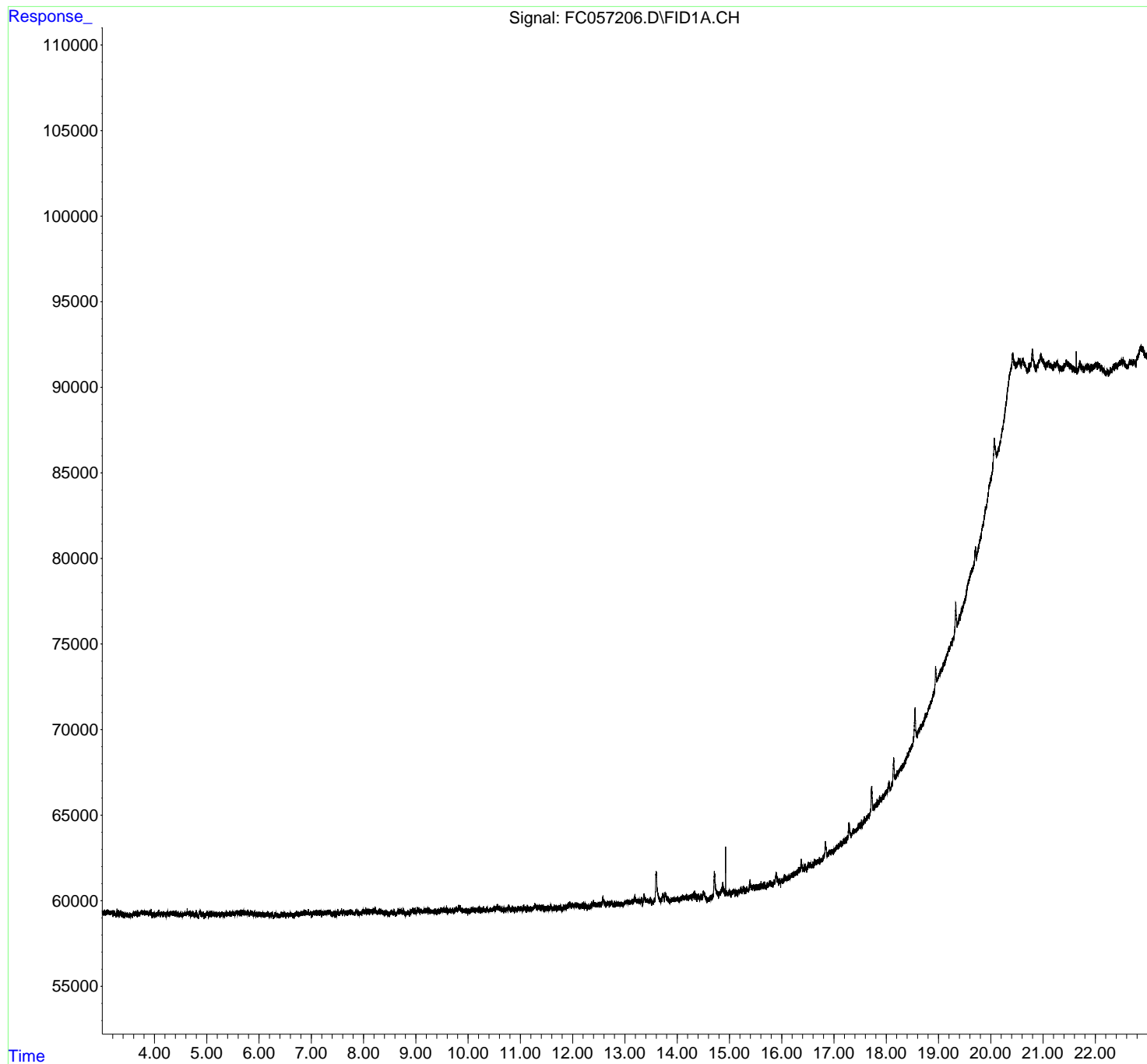
(f)=RT Delta > 1/2 Window

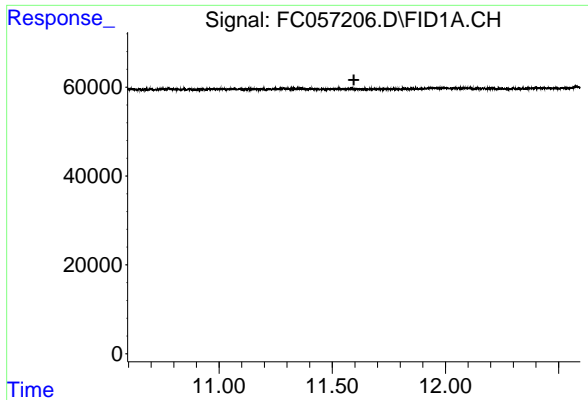
(m)=manual int.

Data Path : Z:\pestpcbsrv\HPCHEM1\FID_C\Data\FC120321AL\
Data File : FC057206.D
Signal(s) : FID1A.CH
Acq On : 03 Dec 2021 18:52
Operator : AJ\MA
Sample : I.BLK
Misc :
ALS Vial : 1 Sample Multiplier: 1

Integration File: autoint1.e
Quant Time: Dec 03 21:47:57 2021
Quant Method : Z:\pestpcbsrv\HPCHEM1\FID_C\Method\Aliphatic EPH 111921.M
Quant Title : GC Extractables
QLast Update : Fri Nov 19 00:52:49 2021
Response via : Initial Calibration
Integrator: ChemStation 6890 Scale Mode: Large solvent peaks clipped

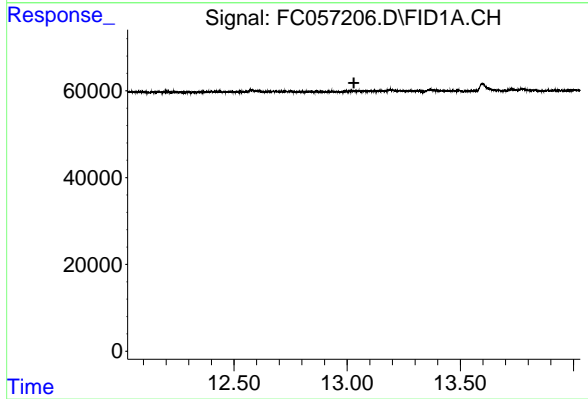
Volume Inj. : 1 ul
Signal Phase : Rxi-1ms
Signal Info : 20M x 0.18mm x 0.18um





#9 ortho-Terphenyl (SURR)

R.T.: 0.000 min
Exp R.T. : 11.596 min
Response: 0
Conc: N.D.



#12 1-chlorooctadecane (SURR)

R.T.: 0.000 min
Exp R.T. : 13.030 min
Response: 0
Conc: N.D.