

Data Path : Z:\pestpcbsrv\HPCHEM1\FID_C\Data\FC120418AL\
 Data File : FC037993.D
 Signal(s) : FID1A.CH
 Acq On : 04 Dec 2018 17:30
 Operator : AJ\SJ
 Sample : J6198-01
 Misc :
 ALS Vial : 10 Sample Multiplier: 1

Integration File: autoint1.e
 Quant Time: Dec 05 02:14:47 2018
 Quant Method : Z:\pestpcbsrv\HPCHEM1\FID_C\Method\Alaphatic EPH 111318.M
 Quant Title : GC Extractables
 QLast Update : Wed Nov 14 03:04:33 2018
 Response via : Initial Calibration
 Integrator: ChemStation 6890 Scale Mode: Large solvent peaks clipped

Volume Inj. : 1 ul
 Signal Phase : Rxi-1ms
 Signal Info : 20M x 0.18mm x 0.18um

Compound	R.T.	Response	Conc Units
System Monitoring Compounds			
9) S ortho-Terphenyl (SURR)	11.291	2751286	25.217 ug/ml
Spiked Amount	50.000	Recovery =	50.43%
12) S 1-chlorooctadecane (S...	12.735	1965093	22.919 ug/ml
Spiked Amount	50.000	Recovery =	45.84%

Target Compounds

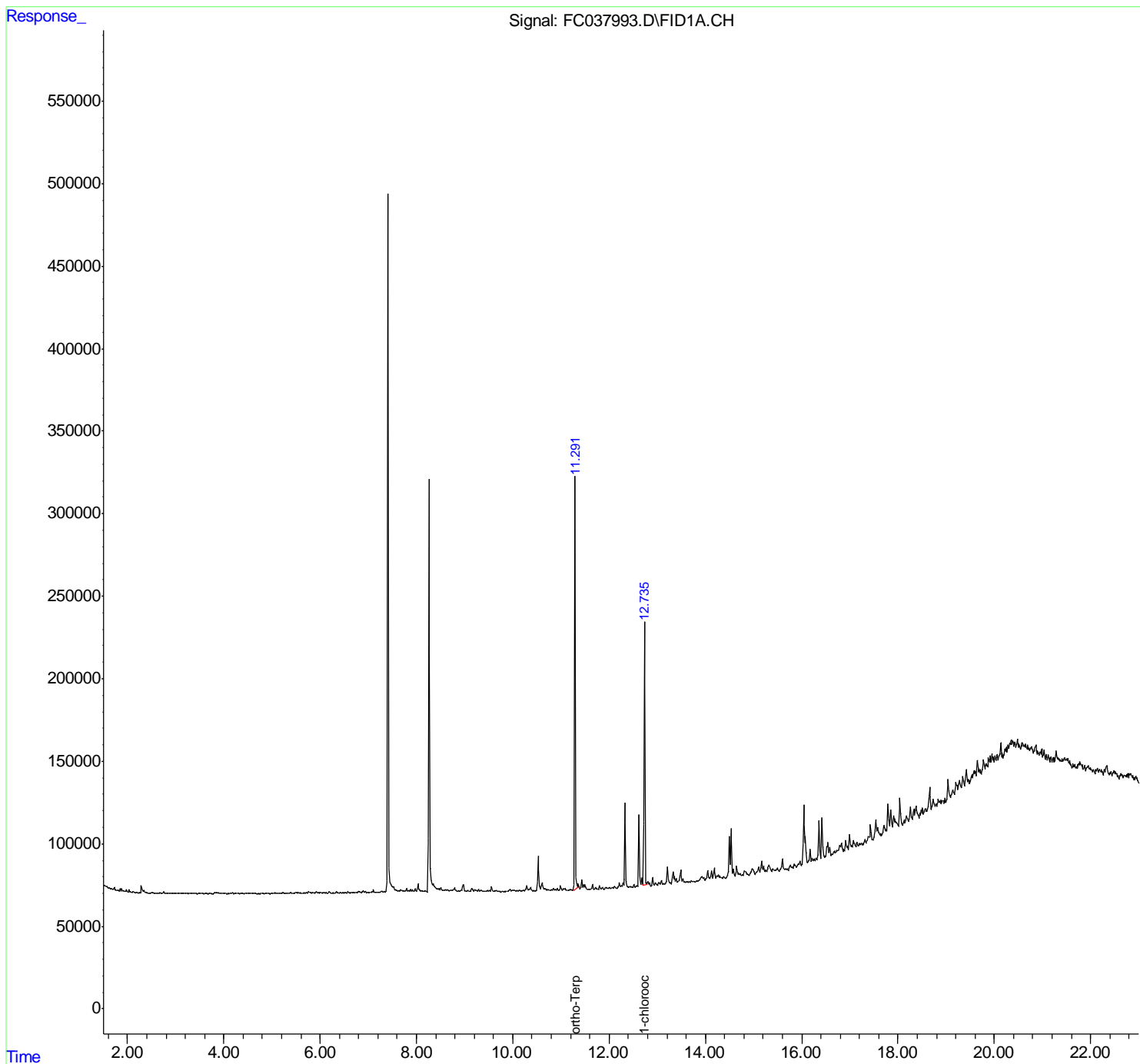
(f)=RT Delta > 1/2 Window

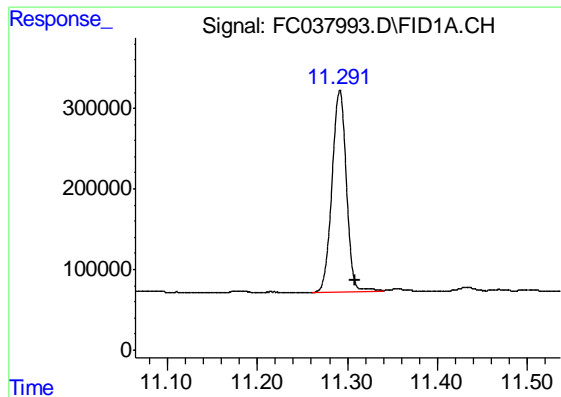
(m)=manual int.

Data Path : Z:\pestpcbsrv\HPCHEM1\FID_C\Data\FC120418AL\
 Data File : FC037993.D
 Signal(s) : FID1A.CH
 Acq On : 04 Dec 2018 17:30
 Operator : AJ\SJ
 Sample : J6198-01
 Misc :
 ALS Vial : 10 Sample Multiplier: 1

Integration File: autoint1.e
 Quant Time: Dec 05 02:14:47 2018
 Quant Method : Z:\pestpcbsrv\HPCHEM1\FID_C\Method\Aliphatic EPH 111318.M
 Quant Title : GC Extractables
 QLast Update : Wed Nov 14 03:04:33 2018
 Response via : Initial Calibration
 Integrator: ChemStation 6890 Scale Mode: Large solvent peaks clipped

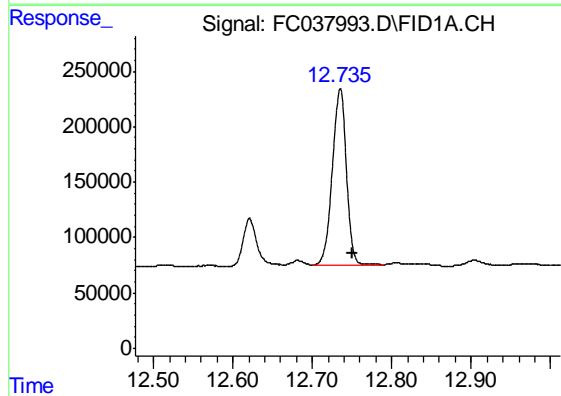
Volume Inj. : 1 ul
 Signal Phase : Rxi-1ms
 Signal Info : 20M x 0.18mm x 0.18um





#9 ortho-Terphenyl (SURR)

R.T.: 11.291 min
Delta R.T.: -0.017 min
Response: 2751286
Conc: 25.22 ug/ml



#12 1-chlorooctadecane (SURR)

R.T.: 12.735 min
Delta R.T.: -0.015 min
Response: 1965093
Conc: 22.92 ug/ml