

Data Path : Z:\pestpcbsrv\HPCHEM1\FID_C\Data\FC120920AL\
 Data File : FC051195.D
 Signal(s) : FID1A.CH
 Acq On : 09 Dec 2020 9:30
 Operator : DD\AJ
 Sample : 20 PPM ALIPHATIC HC STD
 Misc :
 ALS Vial : 2 Sample Multiplier: 1

Integration File: autoint1.e
 Quant Time: Dec 10 00:52:18 2020
 Quant Method : Z:\pestpcbsrv\HPCHEM1\FID_C\Method\Alaphatic EPH 112720.M
 Quant Title : GC Extractables
 QLast Update : Mon Nov 30 10:42:25 2020
 Response via : Initial Calibration
 Integrator: ChemStation 6890 Scale Mode: Large solvent peaks clipped

Volume Inj. : 1 ul
 Signal Phase : Rxi-1ms
 Signal Info : 20M x 0.18mm x 0.18um

Compound	R.T.	Response	Conc Units

System Monitoring Compounds			
9) S ortho-Terphenyl (SURR)	11.586	2328139	18.921 ug/ml
Spiked Amount	50.000	Recovery	= 37.84%
12) S 1-chlorooctadecane (S...	13.021	1802486	18.477 ug/ml
Spiked Amount	50.000	Recovery	= 36.95%
Target Compounds			
1) T n-Nonane (C9)	3.340	2237324	21.023 ug/ml
2) T n-Decane (C10)	4.408	2254460	21.227 ug/ml
3) T A~Naphthalene (C11.7)	6.001	2374197	21.118 ug/ml
4) T n-Dodecane (C12)	6.427	2299164	21.131 ug/ml
5) T A~2-methylnaphthalene...	7.058	2357663	20.862 ug/ml
6) T n-Tetradecane (C14)	8.222	2277091	21.045 ug/ml
7) T n-Hexadecane (C16)	9.824	2203217	20.531 ug/ml
8) T n-Octadecane (C18)	11.266	2252274	19.747 ug/ml
10) T n-Eicosane (C20)	12.575	2191284	18.863 ug/ml
11) T n-Heneicosane (C21)	13.186	2158381	18.629 ug/ml
13) T n-Docosane (C22)	13.772	2123371	18.333 ug/ml
14) T n-Tetracosane (C24)	14.874	2078626	18.073 ug/ml
15) T n-Hexacosane (C26)	15.894	2017983	17.922 ug/ml
16) T n-Octacosane (C28)	16.843	2009830	18.151 ug/ml
17) T n-Tricontane (C30)	17.729	2018205	18.999 ug/ml
18) T n-Dotriacontane (C32)	18.561	1888199	19.325 ug/ml
19) T n-Tetratriacontane (C34)	19.343	1811906	20.302 ug/ml
20) T n-Hexatriacontane (C36)	20.083	1701535	20.401 ug/ml
21) T n-Octatriacontane (C38)	20.820	1648646	21.170 ug/ml
22) T n-Tetracontane (C40)	21.739	1620616	19.573 ug/ml

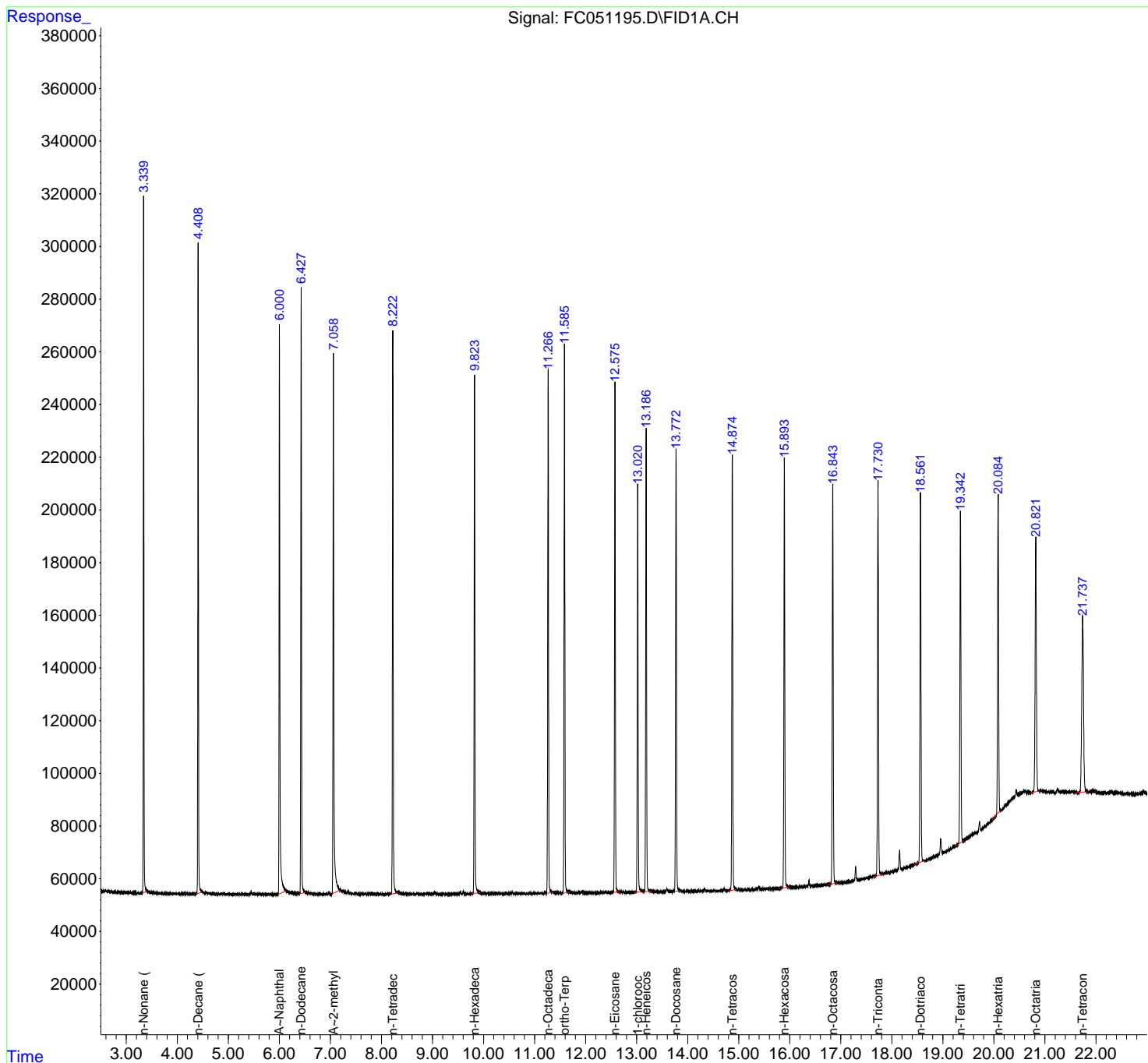
(f)=RT Delta > 1/2 Window

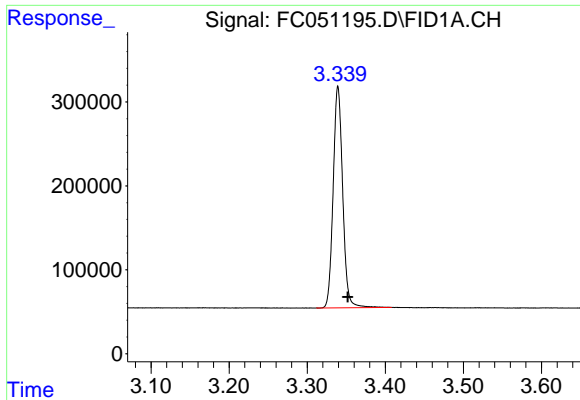
(m)=manual int.

Data Path : Z:\pestpcbsrv\HPCHEM1\FID_C\Data\FC120920AL\
 Data File : FC051195.D
 Signal(s) : FID1A.CH
 Acq On : 09 Dec 2020 9:30
 Operator : DD\AJ
 Sample : 20 PPM ALIPHATIC HC STD
 Misc :
 ALS Vial : 2 Sample Multiplier: 1

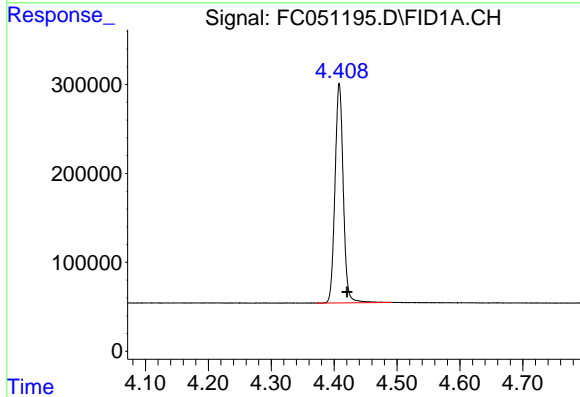
Integration File: autoint1.e
 Quant Time: Dec 10 00:52:18 2020
 Quant Method : Z:\pestpcbsrv\HPCHEM1\FID_C\Method\Aliphatic EPH 112720.M
 Quant Title : GC Extractables
 QLast Update : Mon Nov 30 10:42:25 2020
 Response via : Initial Calibration
 Integrator: ChemStation 6890 Scale Mode: Large solvent peaks clipped

Volume Inj. : 1 ul
 Signal Phase : Rxi-1ms
 Signal Info : 20M x 0.18mm x 0.18um

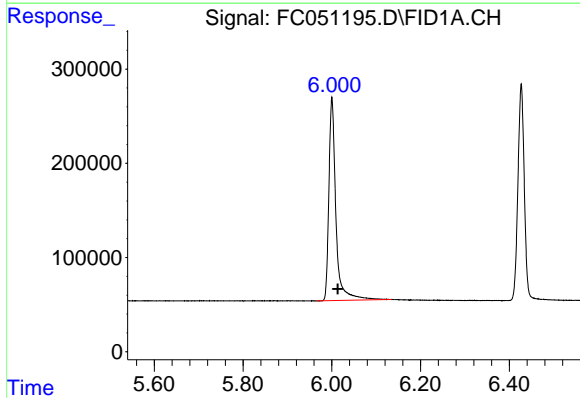




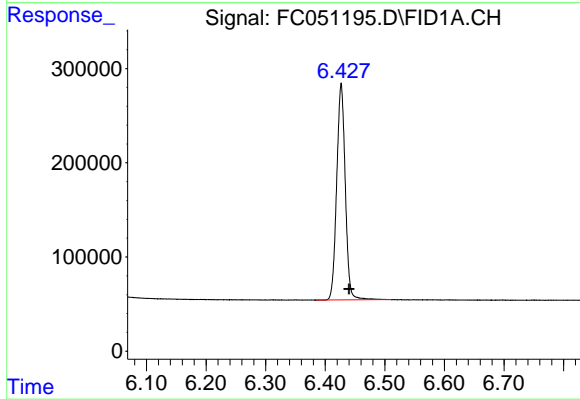
#1 n-Nonane (C9)
R.T.: 3.340 min
Delta R.T.: -0.012 min
Response: 2237324
Conc: 21.02 ug/ml



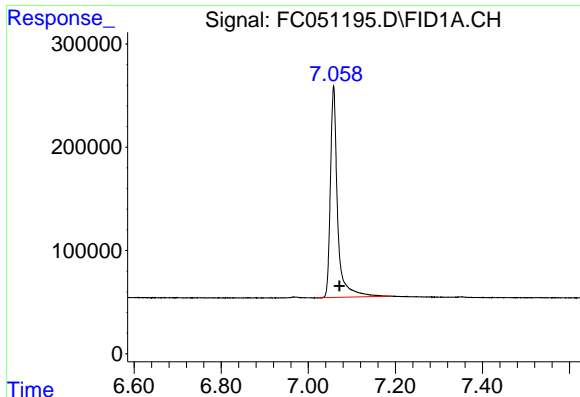
#2 n-Decane (C10)
R.T.: 4.408 min
Delta R.T.: -0.012 min
Response: 2254460
Conc: 21.23 ug/ml



#3 A~Naphthalene (C11.7)
R.T.: 6.001 min
Delta R.T.: -0.013 min
Response: 2374197
Conc: 21.12 ug/ml

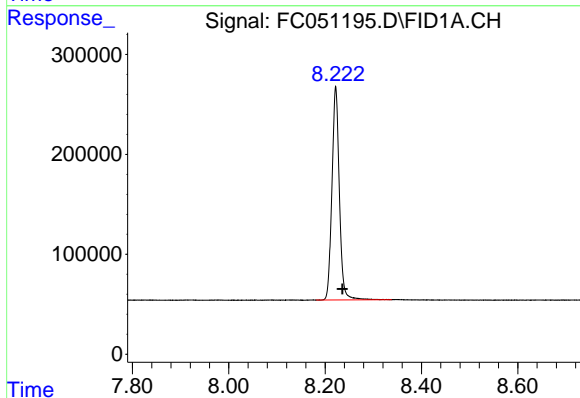


#4 n-Dodecane (C12)
R.T.: 6.427 min
Delta R.T.: -0.013 min
Response: 2299164
Conc: 21.13 ug/ml



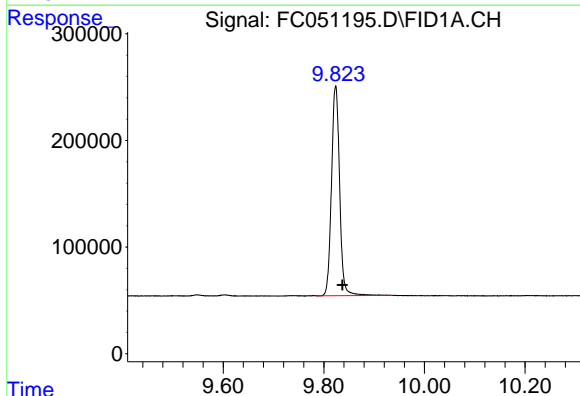
#5 A~2-methylnaphthalene (C12.89)

R.T.: 7.058 min
 Delta R.T.: -0.013 min
 Response: 2357663
 Conc: 20.86 ug/ml



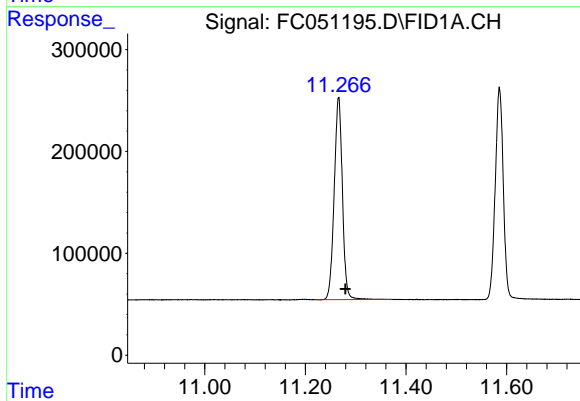
#6 n-Tetradecane (C14)

R.T.: 8.222 min
 Delta R.T.: -0.014 min
 Response: 2277091
 Conc: 21.05 ug/ml



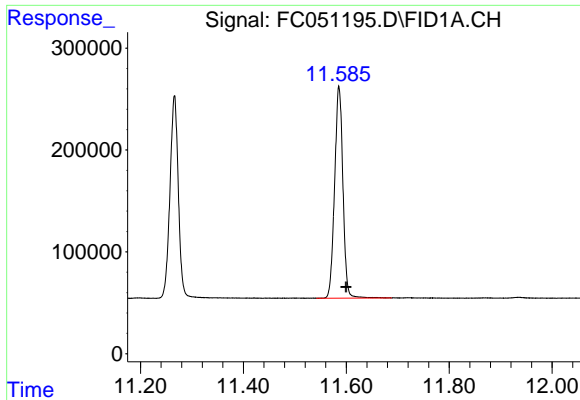
#7 n-Hexadecane (C16)

R.T.: 9.824 min
 Delta R.T.: -0.014 min
 Response: 2203217
 Conc: 20.53 ug/ml

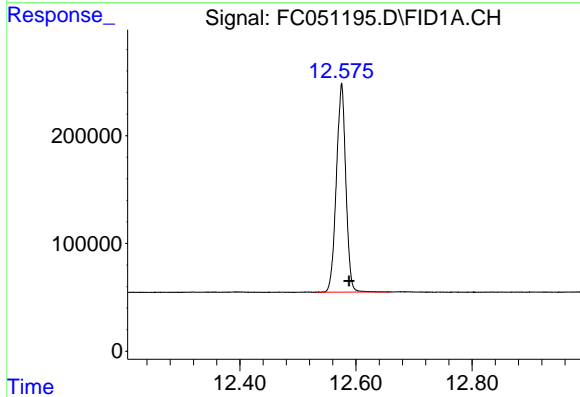


#8 n-Octadecane (C18)

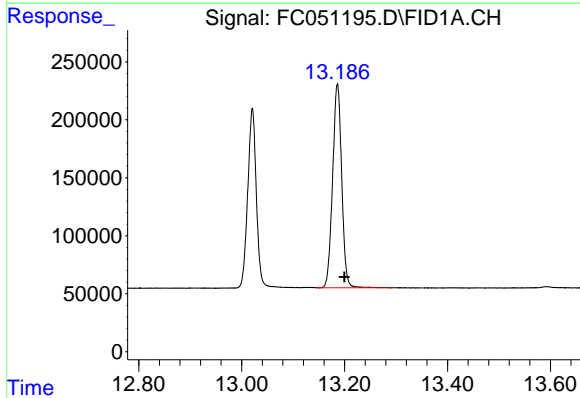
R.T.: 11.266 min
 Delta R.T.: -0.013 min
 Response: 2252274
 Conc: 19.75 ug/ml



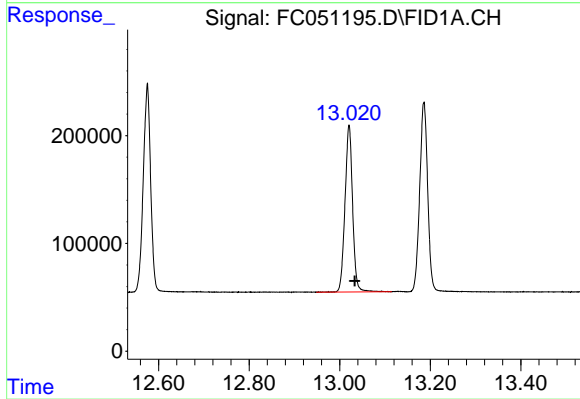
#9 ortho-Terphenyl (SURR)
R.T.: 11.586 min
Delta R.T.: -0.014 min
Response: 2328139
Conc: 18.92 ug/ml



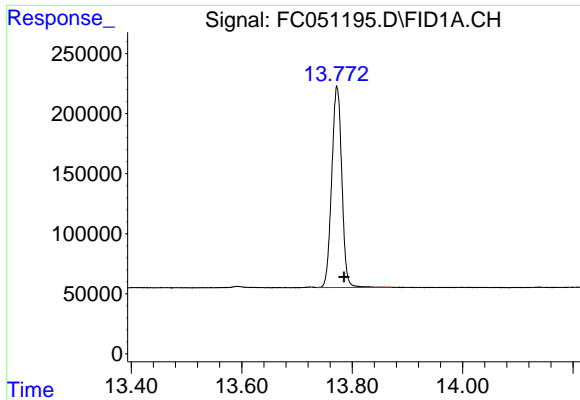
#10 n-Eicosane (C20)
R.T.: 12.575 min
Delta R.T.: -0.013 min
Response: 2191284
Conc: 18.86 ug/ml



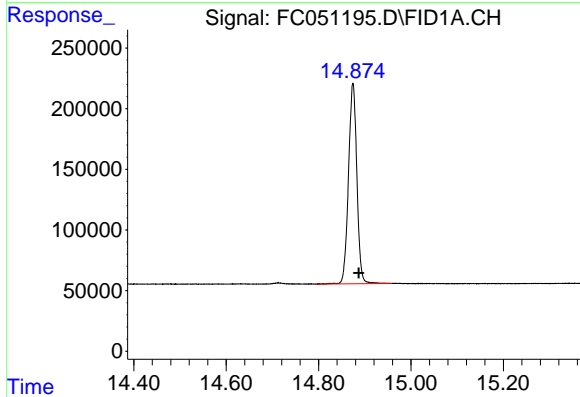
#11 n-Heneicosane (C21)
R.T.: 13.186 min
Delta R.T.: -0.014 min
Response: 2158381
Conc: 18.63 ug/ml



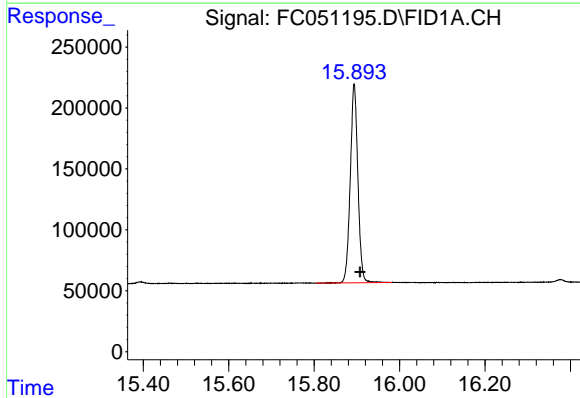
#12 1-chlorooctadecane (SURR)
R.T.: 13.021 min
Delta R.T.: -0.013 min
Response: 1802486
Conc: 18.48 ug/ml



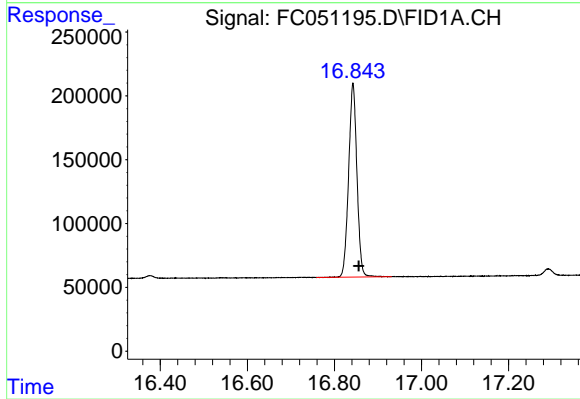
#13 n-Docosane (C22)
R.T.: 13.772 min
Delta R.T.: -0.013 min
Response: 2123371
Conc: 18.33 ug/ml



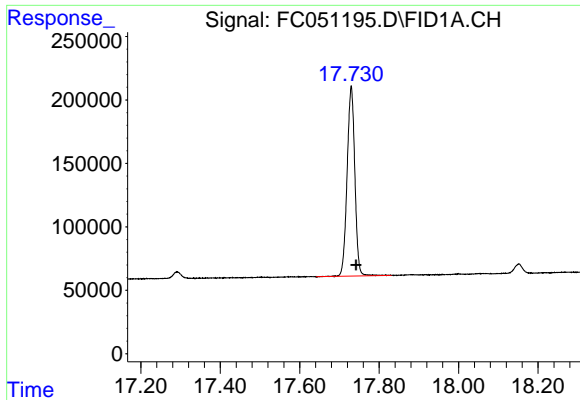
#14 n-Tetracosane (C24)
R.T.: 14.874 min
Delta R.T.: -0.013 min
Response: 2078626
Conc: 18.07 ug/ml



#15 n-Hexacosane (C26)
R.T.: 15.894 min
Delta R.T.: -0.013 min
Response: 2017983
Conc: 17.92 ug/ml

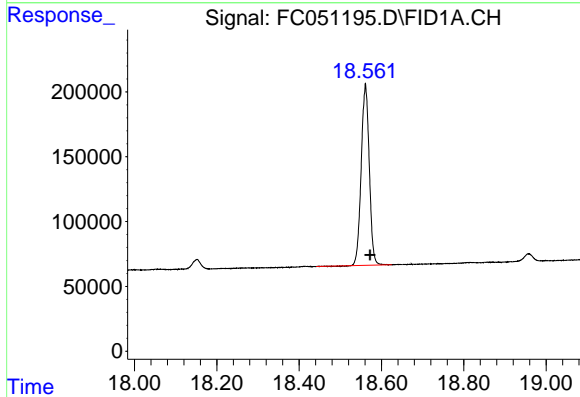


#16 n-Octacosane (C28)
R.T.: 16.843 min
Delta R.T.: -0.013 min
Response: 2009830
Conc: 18.15 ug/ml



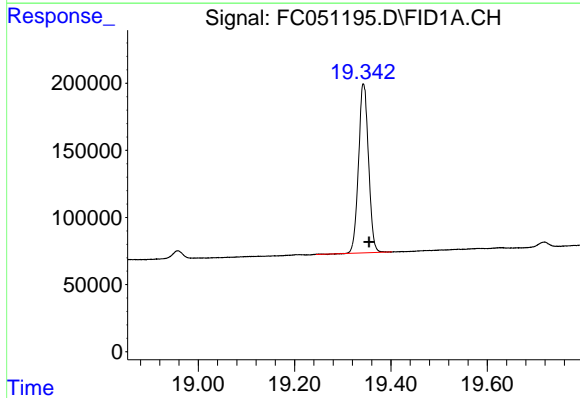
#17 n-Tricontane (C30)

R.T.: 17.729 min
Delta R.T.: -0.012 min
Response: 2018205
Conc: 19.00 ug/ml



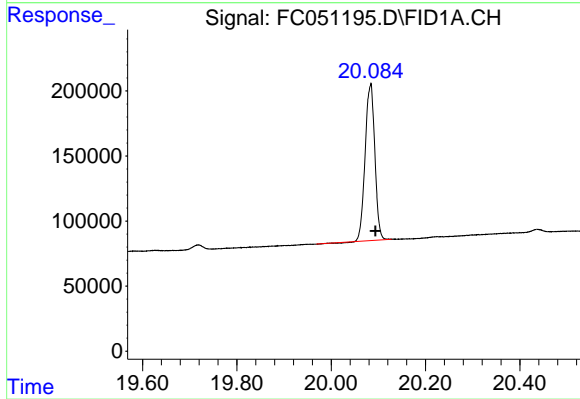
#18 n-Dotriacontane (C32)

R.T.: 18.561 min
Delta R.T.: -0.012 min
Response: 1888199
Conc: 19.32 ug/ml



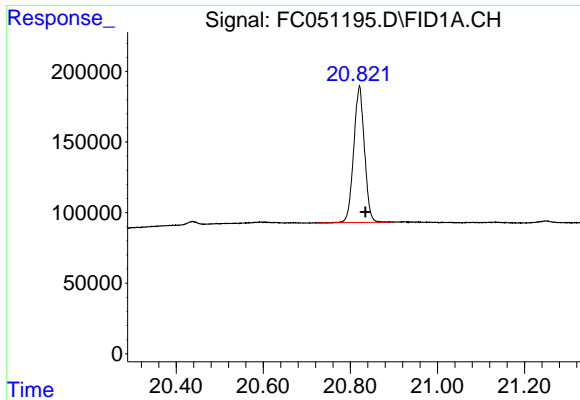
#19 n-Tetratriacontane (C34)

R.T.: 19.343 min
Delta R.T.: -0.011 min
Response: 1811906
Conc: 20.30 ug/ml



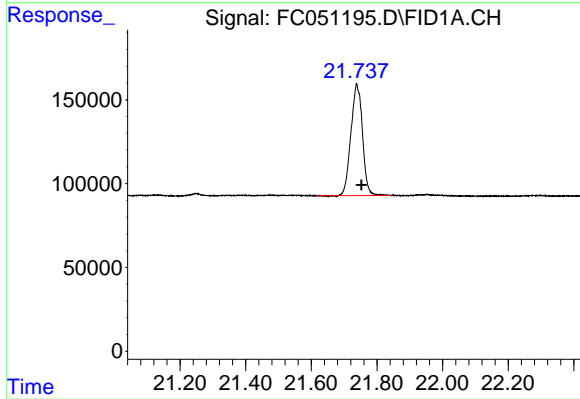
#20 n-Hexatriacontane (C36)

R.T.: 20.083 min
Delta R.T.: -0.011 min
Response: 1701535
Conc: 20.40 ug/ml



#21 n-Octatriacontane (C38)

R.T.: 20.820 min
Delta R.T.: -0.014 min
Response: 1648646
Conc: 21.17 ug/ml



#22 n-Tetracontane (C40)

R.T.: 21.739 min
Delta R.T.: -0.014 min
Response: 1620616
Conc: 19.57 ug/ml