

Data Path : Z:\pestpcbsrv\HPCHEM1\FID\_C\Data\FC121021AL\  
 Data File : FC057368.D  
 Signal(s) : FID1A.CH  
 Acq On : 10 Dec 2021 22:08  
 Operator : AJ\MA  
 Sample : M5019-02DL 5X  
 Misc :  
 ALS Vial : 11 Sample Multiplier: 1

Integration File: autoint1.e  
 Quant Time: Dec 10 23:51:30 2021  
 Quant Method : Z:\pestpcbsrv\HPCHEM1\FID\_C\Method\Aliphatic EPH 120921.M  
 Quant Title : GC Extractables  
 QLast Update : Thu Dec 09 22:19:01 2021  
 Response via : Initial Calibration  
 Integrator: ChemStation 6890 Scale Mode: Large solvent peaks clipped

Volume Inj. : 1 ul  
 Signal Phase : Rxi-1ms  
 Signal Info : 20M x 0.18mm x 0.18um

| Compound                       | R.T.   | Response | Conc Units  |
|--------------------------------|--------|----------|-------------|
| -----                          |        |          |             |
| System Monitoring Compounds    |        |          |             |
| 9) S ortho-Terphenyl (SURR)    | 11.570 | 763471   | 7.566 ug/ml |
| Spiked Amount                  | 50.000 | Recovery | = 15.13%    |
| 12) S 1-chlorooctadecane (S... | 13.003 | 550434   | 7.249 ug/ml |
| Spiked Amount                  | 50.000 | Recovery | = 14.50%    |

Target Compounds

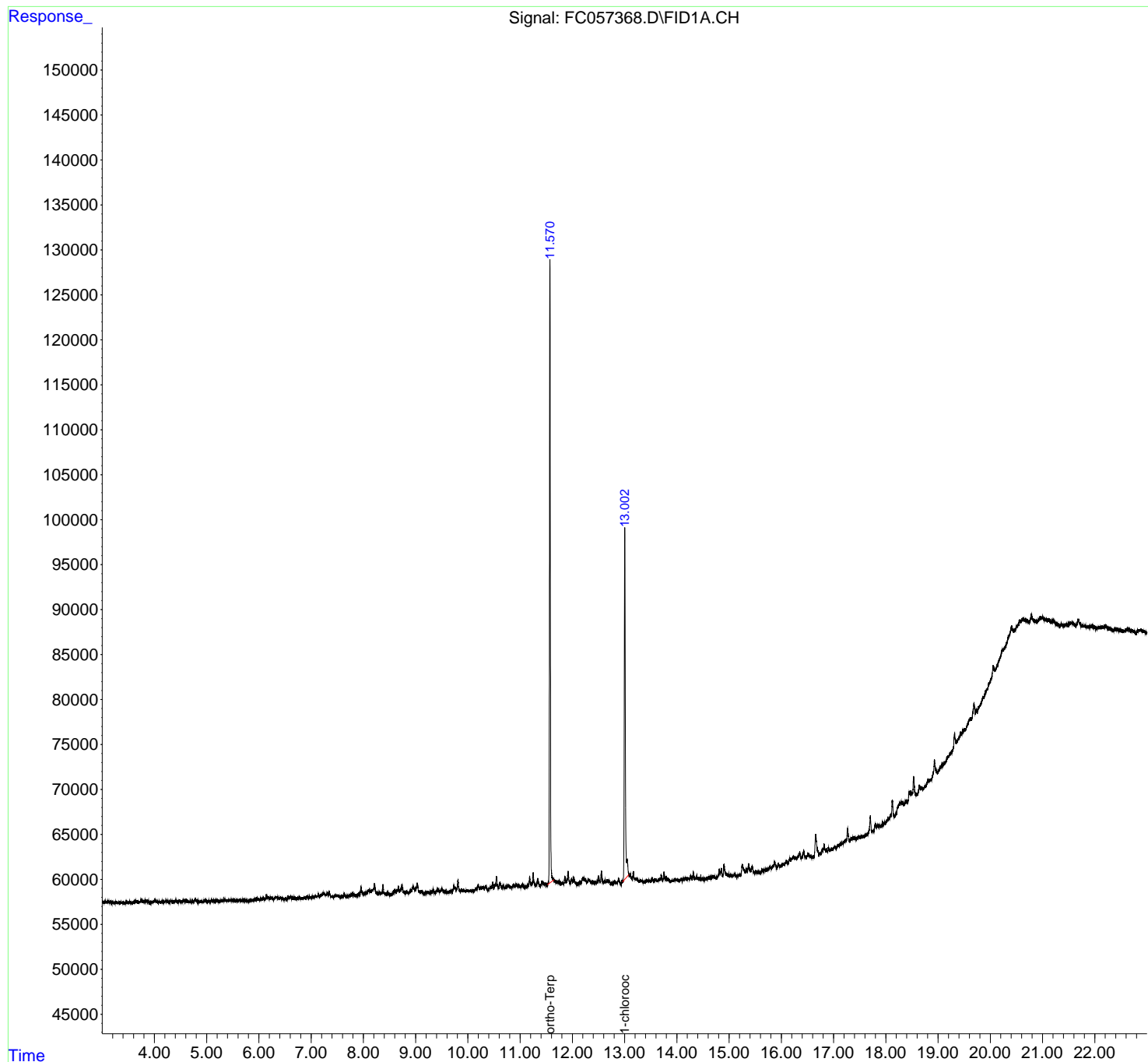
(f)=RT Delta > 1/2 Window

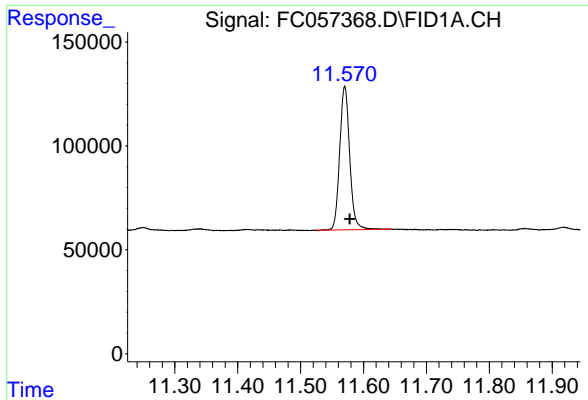
(m)=manual int.

Data Path : Z:\pestpcbsrv\HPCHEM1\FID\_C\Data\FC121021AL\  
Data File : FC057368.D  
Signal(s) : FID1A.CH  
Acq On : 10 Dec 2021 22:08  
Operator : AJ\MA  
Sample : M5019-02DL 5X  
Misc :  
ALS Vial : 11 Sample Multiplier: 1

Integration File: autoint1.e  
Quant Time: Dec 10 23:51:30 2021  
Quant Method : Z:\pestpcbsrv\HPCHEM1\FID\_C\Method\Aliphatic EPH 120921.M  
Quant Title : GC Extractables  
QLast Update : Thu Dec 09 22:19:01 2021  
Response via : Initial Calibration  
Integrator: ChemStation 6890 Scale Mode: Large solvent peaks clipped

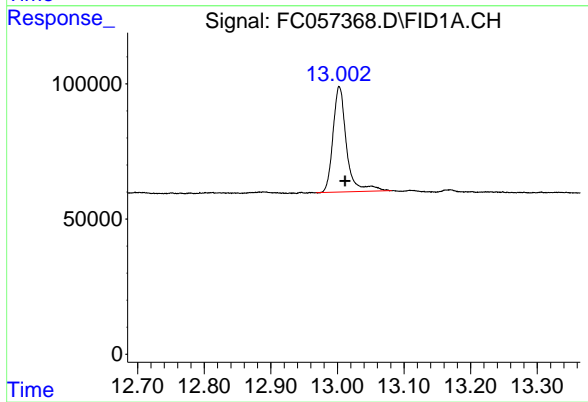
Volume Inj. : 1 ul  
Signal Phase : Rxi-1ms  
Signal Info : 20M x 0.18mm x 0.18um





#9 ortho-Terphenyl (SURR)

R.T.: 11.570 min  
Delta R.T.: -0.008 min  
Response: 763471  
Conc: 7.57 ug/ml



#12 1-chlorooctadecane (SURR)

R.T.: 13.003 min  
Delta R.T.: -0.008 min  
Response: 550434  
Conc: 7.25 ug/ml