

Data Path : Z:\pestpcbsrv\HPCHEM1\FID\_C\Data\FC121021AL\  
 Data File : FC057376.D  
 Signal(s) : FID1A.CH  
 Acq On : 11 Dec 2021 3:24  
 Operator : AJ\MA  
 Sample : M4980-02DL 10X  
 Misc :  
 ALS Vial : 19 Sample Multiplier: 1

Integration File: autoint1.e  
 Quant Time: Dec 11 05:15:09 2021  
 Quant Method : Z:\pestpcbsrv\HPCHEM1\FID\_C\Method\Aliphatic EPH 120921.M  
 Quant Title : GC Extractables  
 QLast Update : Thu Dec 09 22:19:01 2021  
 Response via : Initial Calibration  
 Integrator: ChemStation 6890 Scale Mode: Large solvent peaks clipped

Volume Inj. : 1 ul  
 Signal Phase : Rxi-1ms  
 Signal Info : 20M x 0.18mm x 0.18um

Compound	R.T.	Response	Conc Units
-----			
System Monitoring Compounds			
9) S ortho-Terphenyl (SURR)	11.579	244553	2.424 ug/ml
Spiked Amount	50.000	Recovery =	4.85%
12) S 1-chlorooctadecane (S...	13.008	524554	6.908 ug/ml
Spiked Amount	50.000	Recovery =	13.82%
Target Compounds			
3) T A~Naphthalene (C11.7)	6.003	199761	2.033 ug/ml
14) T n-Tetracosane (C24)	14.865	574511	6.256 ug/ml
16) T n-Octacosane (C28)	16.771f	291828	3.422 ug/ml
18) T n-Dotriacontane (C32)	18.549	245469	3.001 ug/ml
19) T n-Tetratriacontane (C34)	19.331	1259929	15.353 ug/ml
20) T n-Hexatriacontane (C36)	20.066	303819	3.809 ug/ml
21) T n-Octatriacontane (C38)	20.805	301149	3.966 ug/ml
-----			

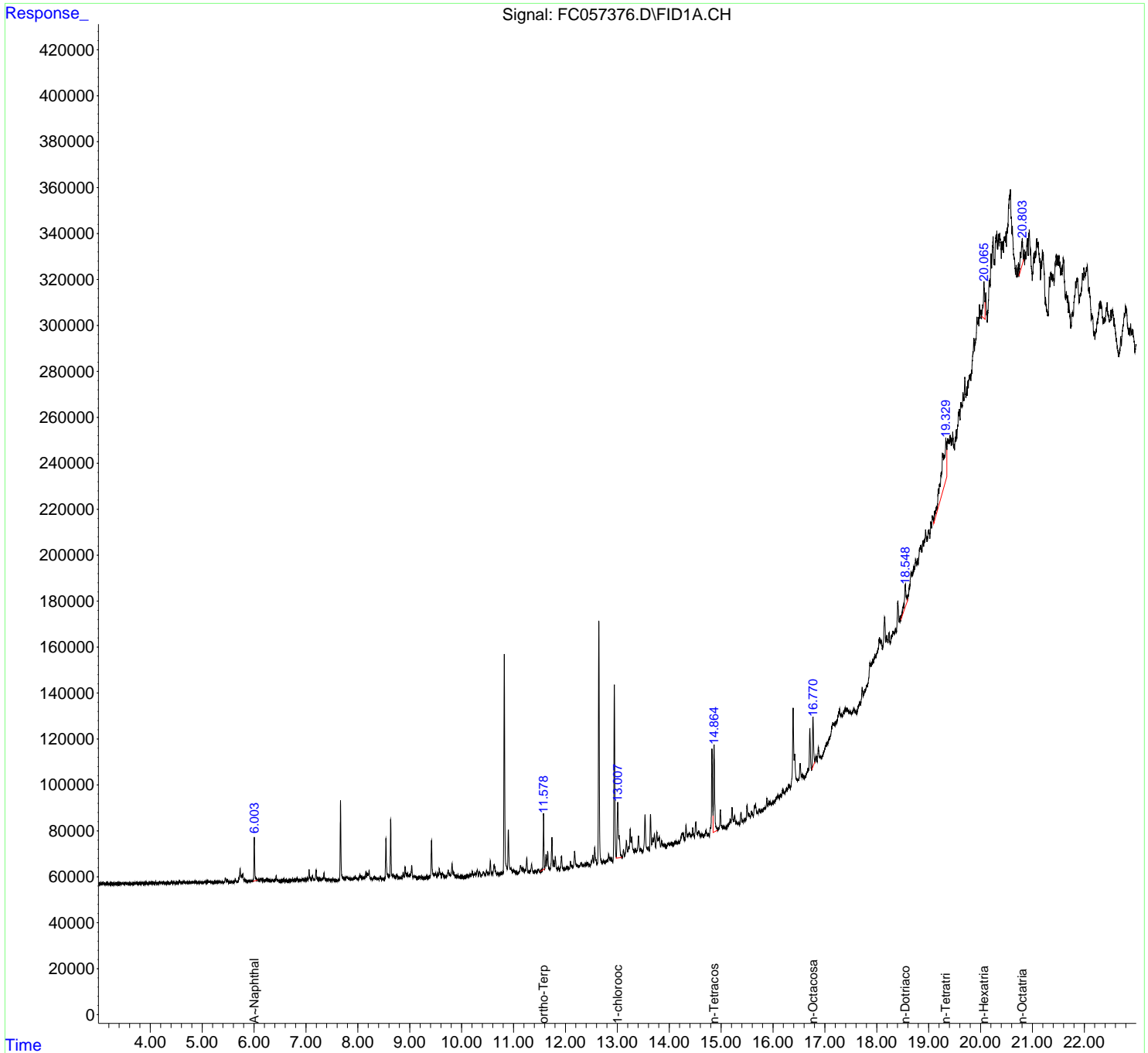
(f)=RT Delta > 1/2 Window

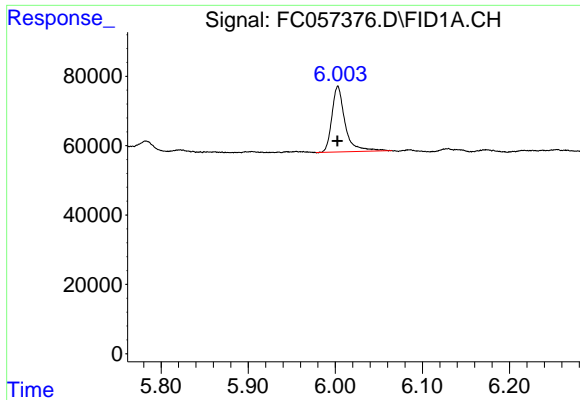
(m)=manual int.

Data Path : Z:\pestpcbsrv\HPCHEM1\FID\_C\Data\FC121021AL\  
 Data File : FC057376.D  
 Signal(s) : FID1A.CH  
 Acq On : 11 Dec 2021 3:24  
 Operator : AJ\MA  
 Sample : M4980-02DL 10X  
 Misc :  
 ALS Vial : 19 Sample Multiplier: 1

Integration File: autoint1.e  
 Quant Time: Dec 11 05:15:09 2021  
 Quant Method : Z:\pestpcbsrv\HPCHEM1\FID\_C\Method\Aliphatic EPH 120921.M  
 Quant Title : GC Extractables  
 QLast Update : Thu Dec 09 22:19:01 2021  
 Response via : Initial Calibration  
 Integrator: ChemStation 6890 Scale Mode: Large solvent peaks clipped

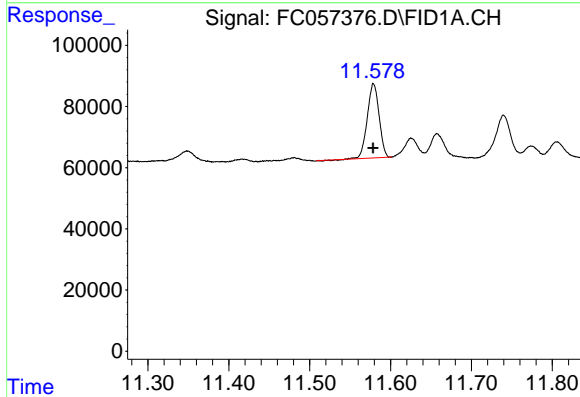
Volume Inj. : 1 ul  
 Signal Phase : Rxi-1ms  
 Signal Info : 20M x 0.18mm x 0.18um





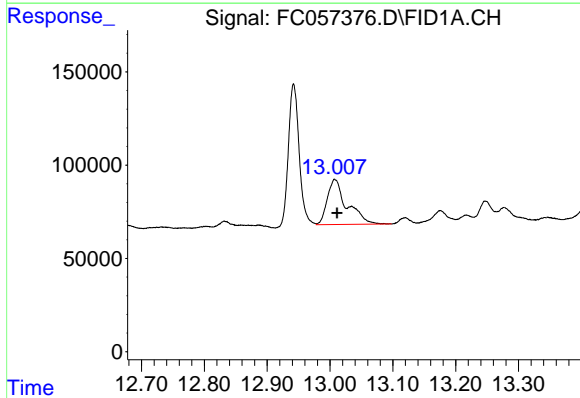
#3 A~Naphthalene (C11.7)

R.T.: 6.003 min  
Delta R.T.: 0.000 min  
Response: 199761  
Conc: 2.03 ug/ml



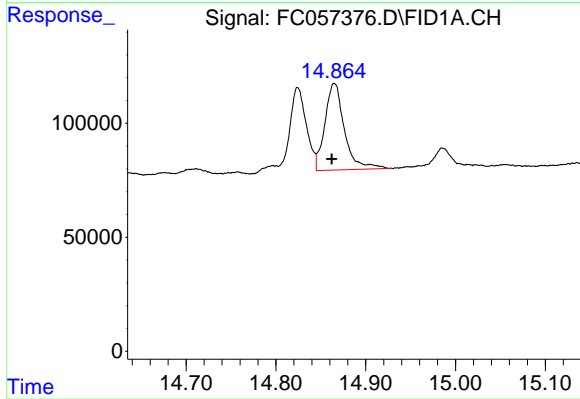
#9 ortho-Terphenyl (SURR)

R.T.: 11.579 min  
Delta R.T.: 0.000 min  
Response: 244553  
Conc: 2.42 ug/ml



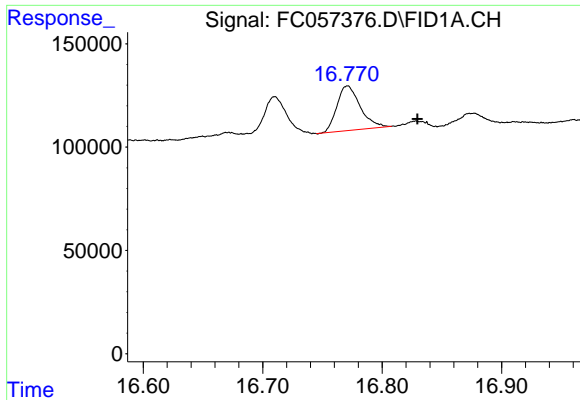
#12 1-chlorooctadecane (SURR)

R.T.: 13.008 min  
Delta R.T.: -0.003 min  
Response: 524554  
Conc: 6.91 ug/ml



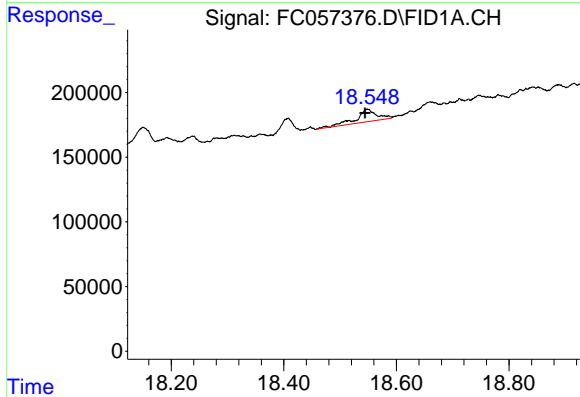
#14 n-Tetracosane (C24)

R.T.: 14.865 min  
Delta R.T.: 0.003 min  
Response: 574511  
Conc: 6.26 ug/ml



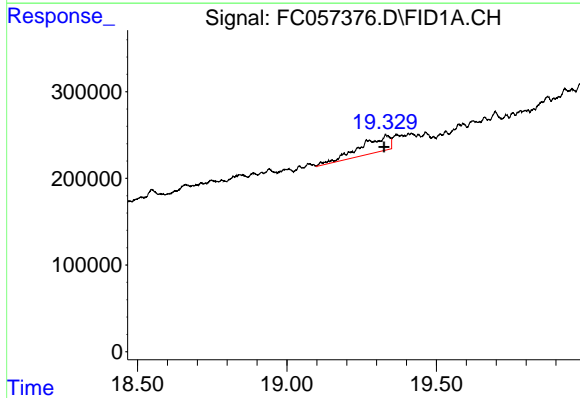
#16 n-Octacosane (C28)

R.T.: 16.771 min  
Delta R.T.: -0.058 min  
Response: 291828  
Conc: 3.42 ug/ml



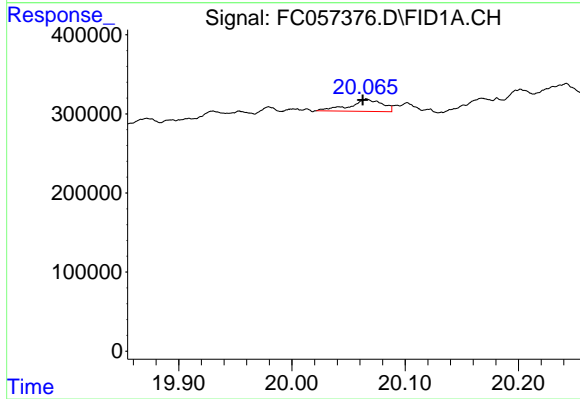
#18 n-Dotriacontane (C32)

R.T.: 18.549 min  
Delta R.T.: 0.004 min  
Response: 245469  
Conc: 3.00 ug/ml



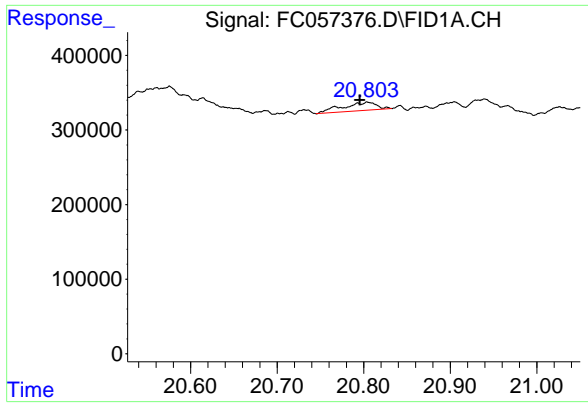
#19 n-Tetratriacontane (C34)

R.T.: 19.331 min  
Delta R.T.: 0.007 min  
Response: 1259929  
Conc: 15.35 ug/ml



#20 n-Hexatriacontane (C36)

R.T.: 20.066 min  
Delta R.T.: 0.004 min  
Response: 303819  
Conc: 3.81 ug/ml



#21 n-Octatriacontane (C38)

R.T.: 20.805 min  
Delta R.T.: 0.010 min  
Response: 301149  
Conc: 3.97 ug/ml