

Data Path : Z:\pestpcbsrv\HPCHEM1\FID_C\Data\FC121018AL\
 Data File : FC038101.D
 Signal(s) : FID1A.CH
 Acq On : 11 Dec 2018 1:14
 Operator : AJ\SJ
 Sample : J6319-07
 Misc :
 ALS Vial : 20 Sample Multiplier: 1

Instrument :
 FID_C
 ClientSampleId :
 061_SW-N-1

Integration File: autoint1.e
 Quant Time: Dec 11 09:43:43 2018
 Quant Method : Z:\pestpcbsrv\HPCHEM1\FID_C\Method\Alaphatic EPH 121018.M
 Quant Title : GC Extractables
 QLast Update : Mon Dec 10 17:11:09 2018
 Response via : Initial Calibration
 Integrator: ChemStation 6890 Scale Mode: Large solvent peaks clipped

Volume Inj. : 1 ul
 Signal Phase : Rxi-1ms
 Signal Info : 20M x 0.18mm x 0.18um

Compound	R.T.	Response	Conc Units

System Monitoring Compounds			
9) S ortho-Terphenyl (SURR)	11.281	1934426	14.838 ug/ml
Spiked Amount	50.000	Recovery	= 29.68%
12) S 1-chlorooctadecane (S...	12.726	1788785	17.742 ug/ml
Spiked Amount	50.000	Recovery	= 35.48%
Target Compounds			
2) T n-Decane (C10)	4.178	20983	0.200 ug/ml
3) T A~Naphthalene (C11.7)	5.743	123872	1.055 ug/ml
4) T n-Dodecane (C12)	6.181	28794	0.267 ug/ml
5) T A~2-methylnaphthalene...	6.790	72431	0.616 ug/ml
6) T n-Tetradecane (C14)	8.019	113384	1.015 ug/ml
7) T n-Hexadecane (C16)	9.549	82418	0.714 ug/ml
8) T n-Octadecane (C18)	10.984	50226	0.416 ug/ml
10) T n-Eicosane (C20)	12.270	217066	1.807 ug/ml
11) T n-Heneicosane (C21)	12.887	296376	2.554 ug/ml
13) T n-Docosane (C22)	13.473	728695	6.305 ug/ml
14) T n-Tetracosane (C24)	14.578	115639	1.007 ug/ml
15) T n-Hexacosane (C26)	15.548	56329	0.501 ug/ml
16) T n-Octacosane (C28)	16.566	142463	1.267 ug/ml
17) T n-Tricontane (C30)	17.401	66540	0.606 ug/ml
18) T n-Dotriacontane (C32)	18.267	144197	1.408 ug/ml
19) T n-Tetratriacontane (C34)	19.036	146441	1.662 ug/ml
20) T n-Hexatriacontane (C36)	19.766	19771	0.252 ug/ml
21) T n-Octatriacontane (C38)	20.471	59801	0.773 ug/ml
22) T n-Tetracontane (C40)	21.286	143514	1.642 ug/ml

(f)=RT Delta > 1/2 Window

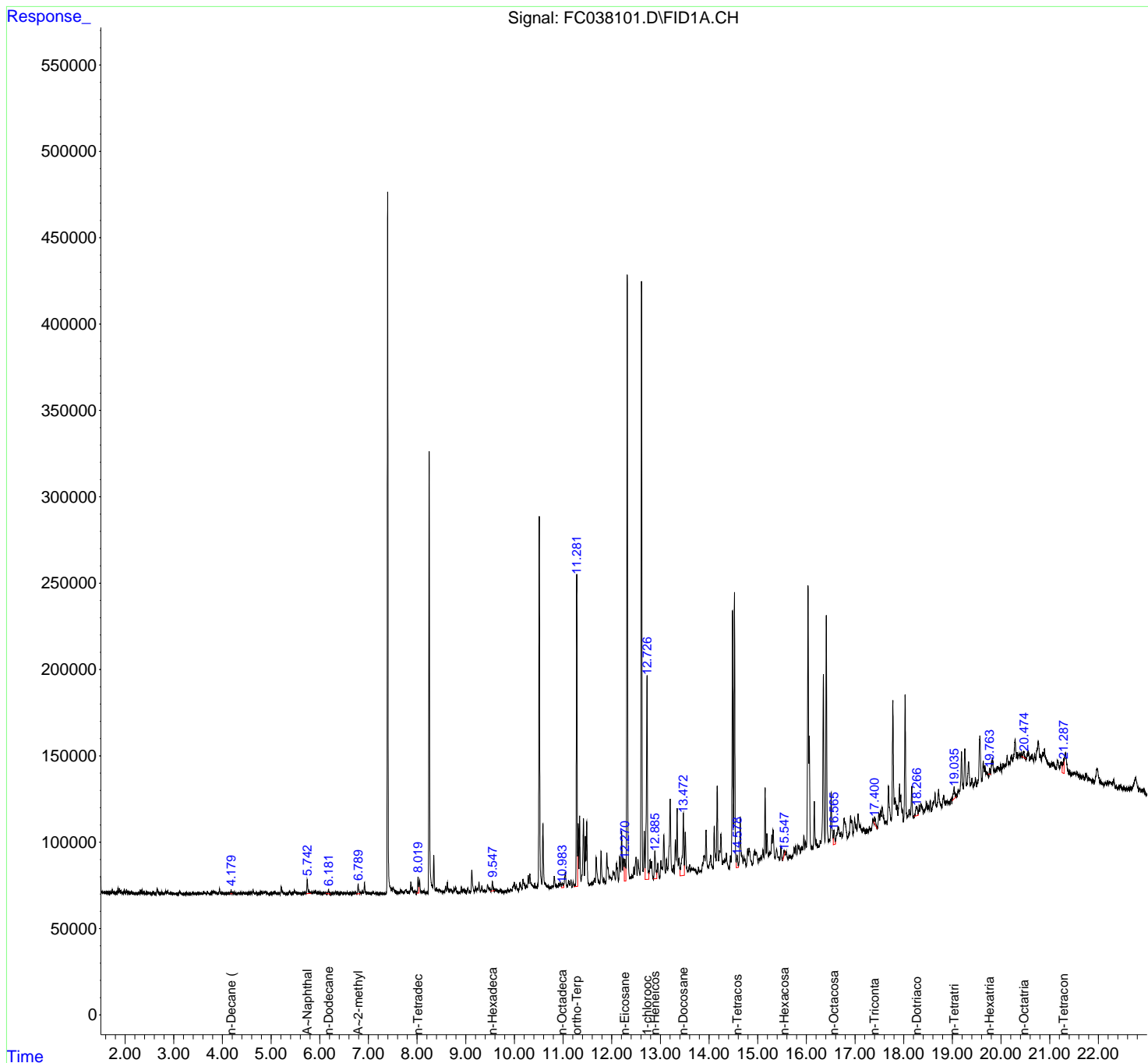
(m)=manual int.

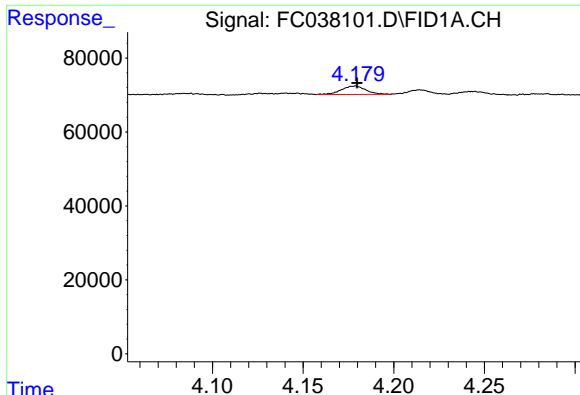
Data Path : Z:\pestpcbsrv\HPCHEM1\FID_C\Data\FC121018AL\
 Data File : FC038101.D
 Signal(s) : FID1A.CH
 Acq On : 11 Dec 2018 1:14
 Operator : AJ\SJ
 Sample : J6319-07
 Misc :
 ALS Vial : 20 Sample Multiplier: 1

Instrument :
 FID_C
 ClientSampleId :
 061_SW-N-1

Integration File: autoint1.e
 Quant Time: Dec 11 09:43:43 2018
 Quant Method : Z:\pestpcbsrv\HPCHEM1\FID_C\Method\Aliphatic EPH 121018.M
 Quant Title : GC Extractables
 QLast Update : Mon Dec 10 17:11:09 2018
 Response via : Initial Calibration
 Integrator: ChemStation 6890 Scale Mode: Large solvent peaks clipped

Volume Inj. : 1 ul
 Signal Phase : Rxi-1ms
 Signal Info : 20M x 0.18mm x 0.18um

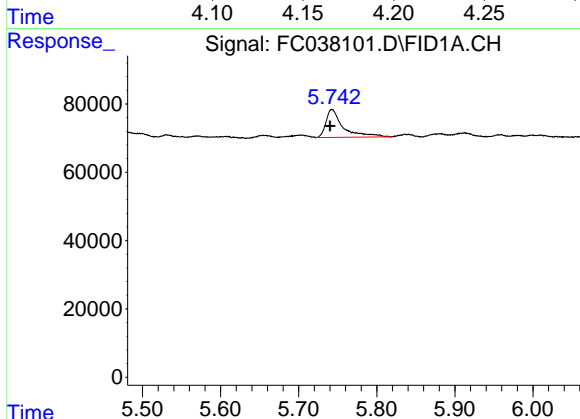




#2 n-Decane (C10)

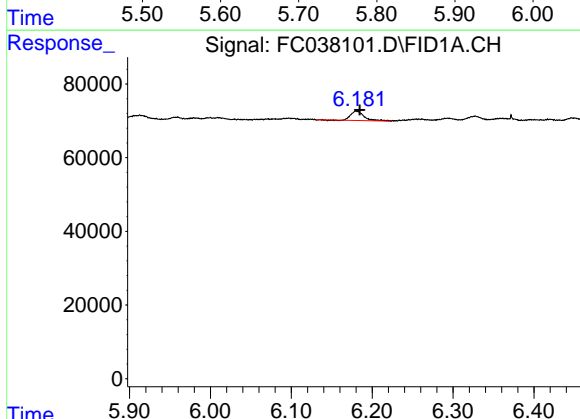
R.T.: 4.178 min
 Delta R.T.: -0.001 min
 Response: 20983
 Conc: 0.20 ug/ml

Instrument :
 FID_C
 ClientSampleId :
 061_SW-N-1



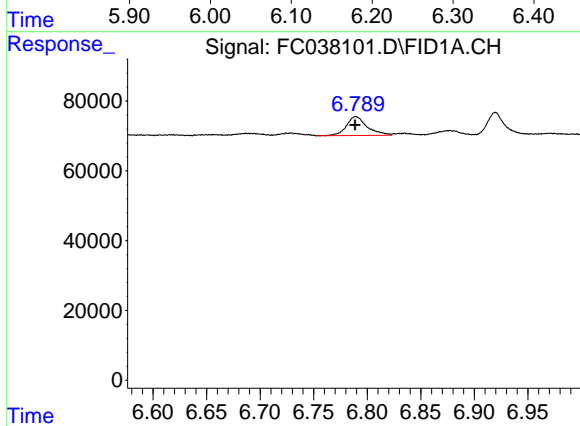
#3 A~Naphthalene (C11.7)

R.T.: 5.743 min
 Delta R.T.: 0.003 min
 Response: 123872
 Conc: 1.05 ug/ml



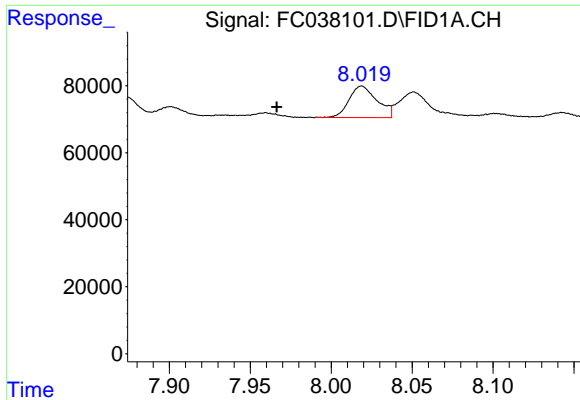
#4 n-Dodecane (C12)

R.T.: 6.181 min
 Delta R.T.: -0.004 min
 Response: 28794
 Conc: 0.27 ug/ml



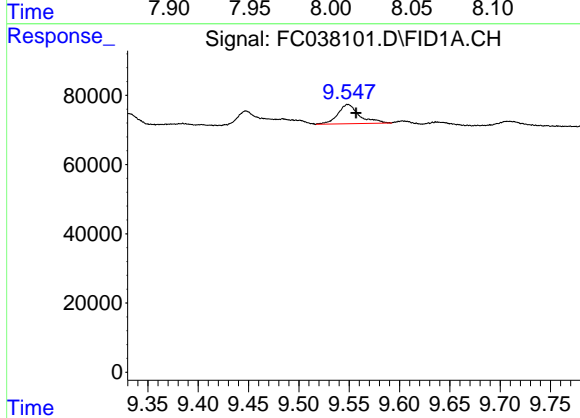
#5 A~2-methylnaphthalene (C12.89)

R.T.: 6.790 min
 Delta R.T.: 0.000 min
 Response: 72431
 Conc: 0.62 ug/ml

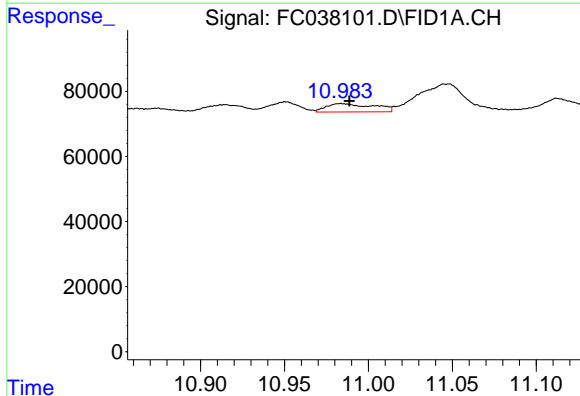


#6 n-Tetradecane (C14)
 R.T.: 8.019 min
 Delta R.T.: 0.053 min
 Response: 113384
 Conc: 1.02 ug/ml

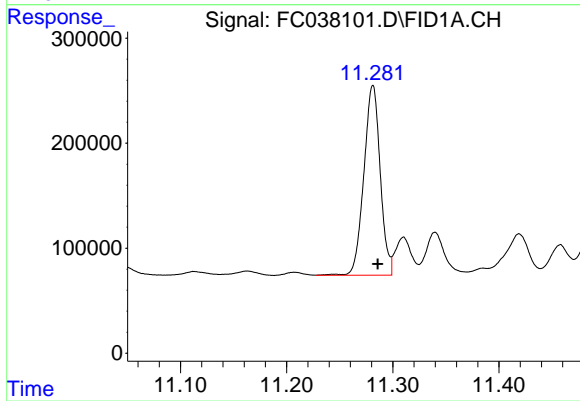
Instrument :
 FID_C
 ClientSampleId :
 061_SW-N-1



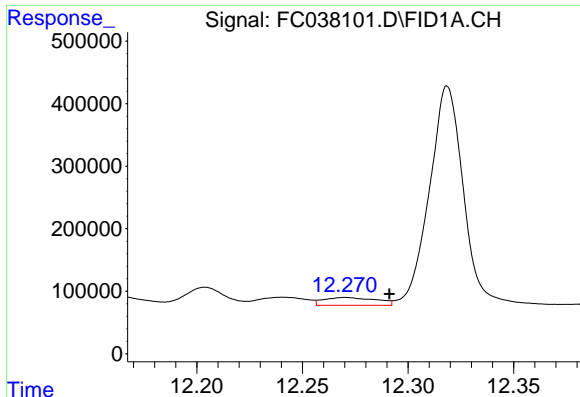
#7 n-Hexadecane (C16)
 R.T.: 9.549 min
 Delta R.T.: -0.008 min
 Response: 82418
 Conc: 0.71 ug/ml



#8 n-Octadecane (C18)
 R.T.: 10.984 min
 Delta R.T.: -0.005 min
 Response: 50226
 Conc: 0.42 ug/ml



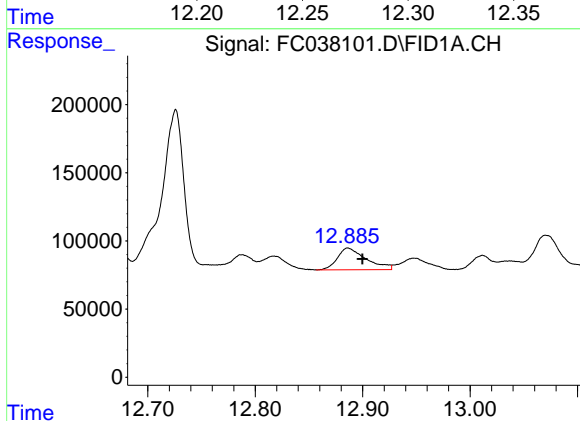
#9 ortho-Terphenyl (SURR)
 R.T.: 11.281 min
 Delta R.T.: -0.005 min
 Response: 1934426
 Conc: 14.84 ug/ml



#10 n-Eicosane (C20)

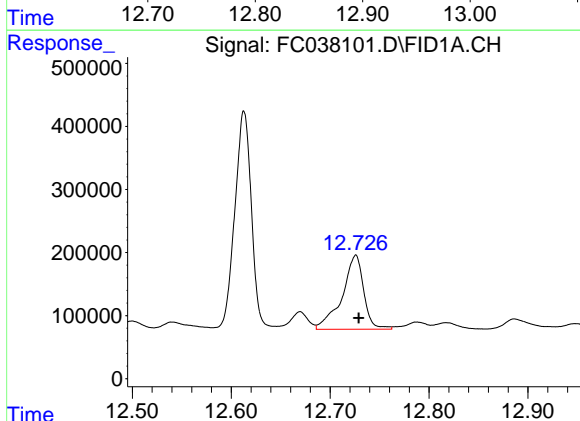
R.T.: 12.270 min
 Delta R.T.: -0.021 min
 Response: 217066
 Conc: 1.81 ug/ml

Instrument :
 FID_C
 ClientSampled :
 061_SW-N-1



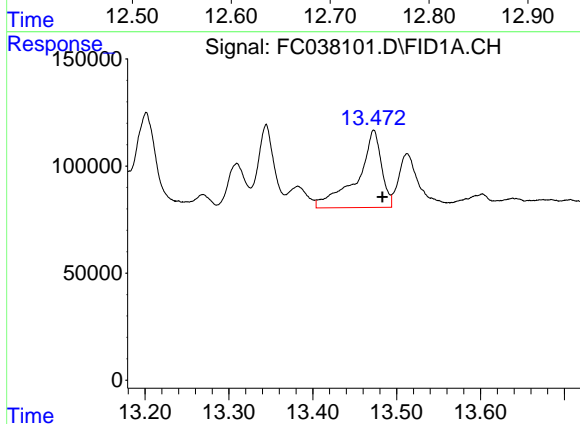
#11 n-Heneicosane (C21)

R.T.: 12.887 min
 Delta R.T.: -0.013 min
 Response: 296376
 Conc: 2.55 ug/ml



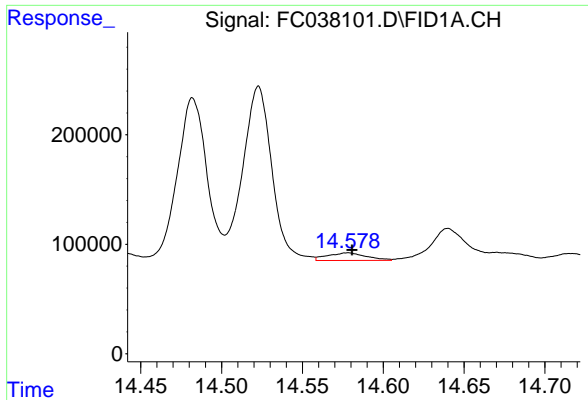
#12 1-chlorooctadecane (SURR)

R.T.: 12.726 min
 Delta R.T.: -0.003 min
 Response: 1788785
 Conc: 17.74 ug/ml



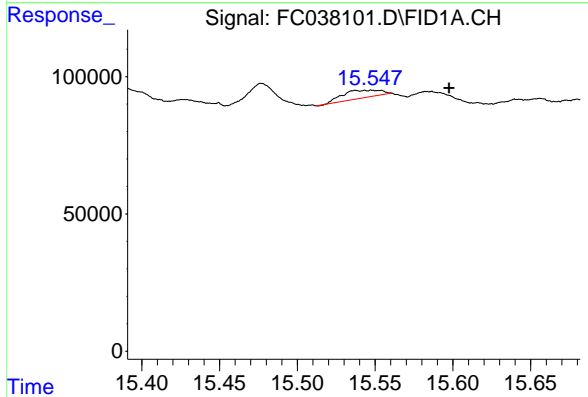
#13 n-Docosane (C22)

R.T.: 13.473 min
 Delta R.T.: -0.010 min
 Response: 728695
 Conc: 6.31 ug/ml

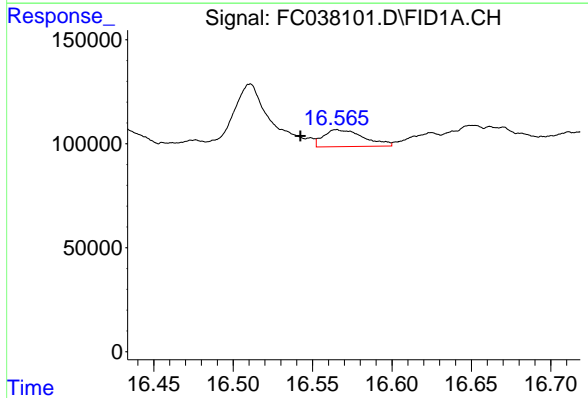


#14 n-Tetracosane (C24)
 R.T.: 14.578 min
 Delta R.T.: -0.002 min
 Response: 115639
 Conc: 1.01 ug/ml

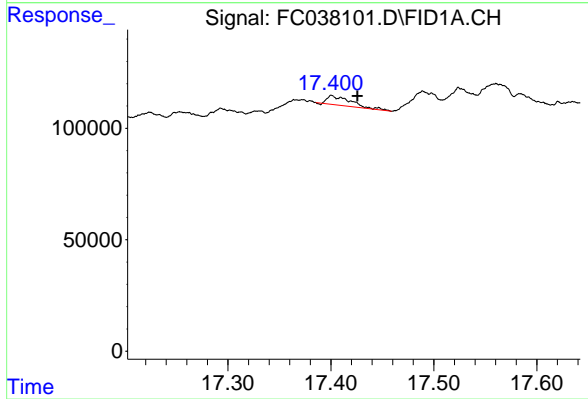
Instrument :
 FID_C
 ClientSampled :
 061_SW-N-1



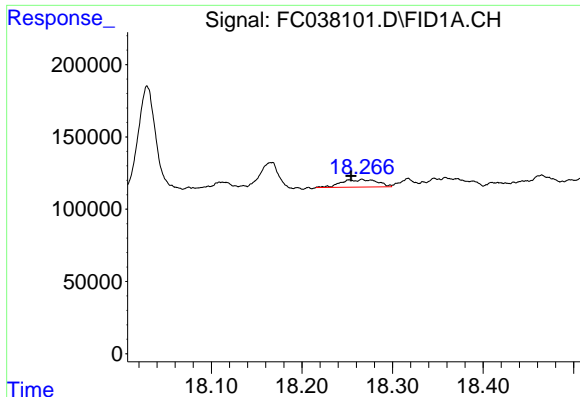
#15 n-Hexacosane (C26)
 R.T.: 15.548 min
 Delta R.T.: -0.050 min
 Response: 56329
 Conc: 0.50 ug/ml



#16 n-Octacosane (C28)
 R.T.: 16.566 min
 Delta R.T.: 0.024 min
 Response: 142463
 Conc: 1.27 ug/ml



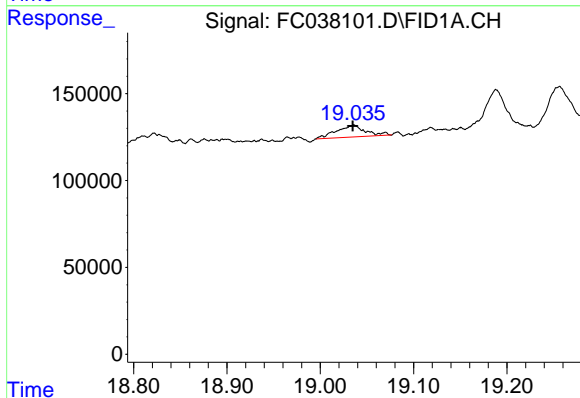
#17 n-Tricontane (C30)
 R.T.: 17.401 min
 Delta R.T.: -0.024 min
 Response: 66540
 Conc: 0.61 ug/ml



#18 n-Dotriacontane (C32)

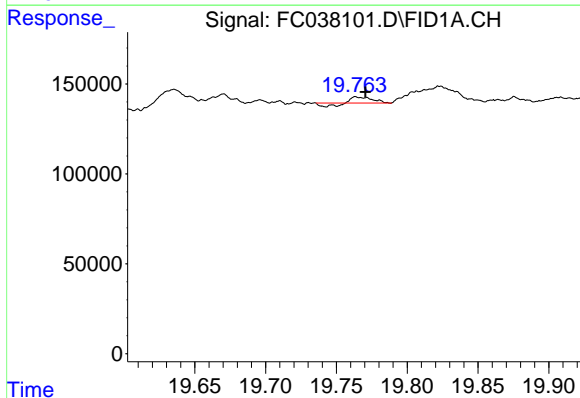
R.T.: 18.267 min
 Delta R.T.: 0.013 min
 Response: 144197
 Conc: 1.41 ug/ml

Instrument :
 FID_C
 ClientSampleId :
 061_SW-N-1



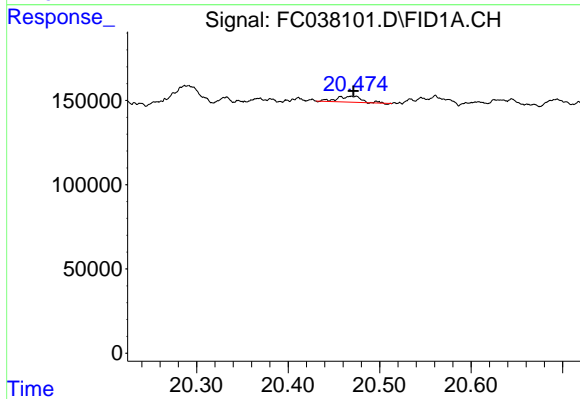
#19 n-Tetraatriacontane (C34)

R.T.: 19.036 min
 Delta R.T.: 0.001 min
 Response: 146441
 Conc: 1.66 ug/ml



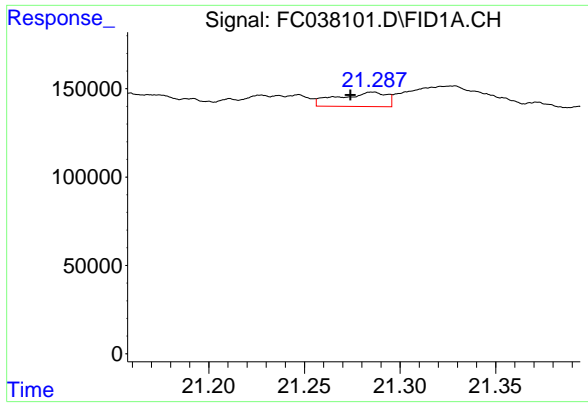
#20 n-Hexatriacontane (C36)

R.T.: 19.766 min
 Delta R.T.: -0.005 min
 Response: 19771
 Conc: 0.25 ug/ml



#21 n-Octatriacontane (C38)

R.T.: 20.471 min
 Delta R.T.: 0.000 min
 Response: 59801
 Conc: 0.77 ug/ml



#22 n-Tetracontane (C40)

R.T.: 21.286 min
Delta R.T.: 0.012 min
Response: 143514
Conc: 1.64 ug/ml

Instrument :
FID_C
ClientSampleId :
061_SW-N-1