

Data Path : Z:\pestpcbsrv\HPCHEM1\FID_C\Data\FC121118AL\
 Data File : FC038092.D
 Signal(s) : FID1A.CH
 Acq On : 10 Dec 2018 19:40
 Operator : AJ\SJ
 Sample : J6319-01
 Misc :
 ALS Vial : 11 Sample Multiplier: 1

Instrument :
 FID_C
 ClientSampleId :
 055_BT-1-1

Integration File: autoint1.e
 Quant Time: Dec 11 09:42:36 2018
 Quant Method : Z:\pestpcbsrv\HPCHEM1\FID_C\Method\Alaphatic EPH 121018.M
 Quant Title : GC Extractables
 QLast Update : Mon Dec 10 17:11:09 2018
 Response via : Initial Calibration
 Integrator: ChemStation 6890 Scale Mode: Large solvent peaks clipped

Volume Inj. : 1 ul
 Signal Phase : Rxi-1ms
 Signal Info : 20M x 0.18mm x 0.18um

Compound	R.T.	Response	Conc Units

System Monitoring Compounds			
9) S ortho-Terphenyl (SURR)	11.285	3447276	26.443 ug/ml
Spiked Amount	50.000	Recovery	= 52.89%
12) S 1-chlorooctadecane (S...	12.727	2862580	28.392 ug/ml
Spiked Amount	50.000	Recovery	= 56.78%

Target Compounds

(f)=RT Delta > 1/2 Window

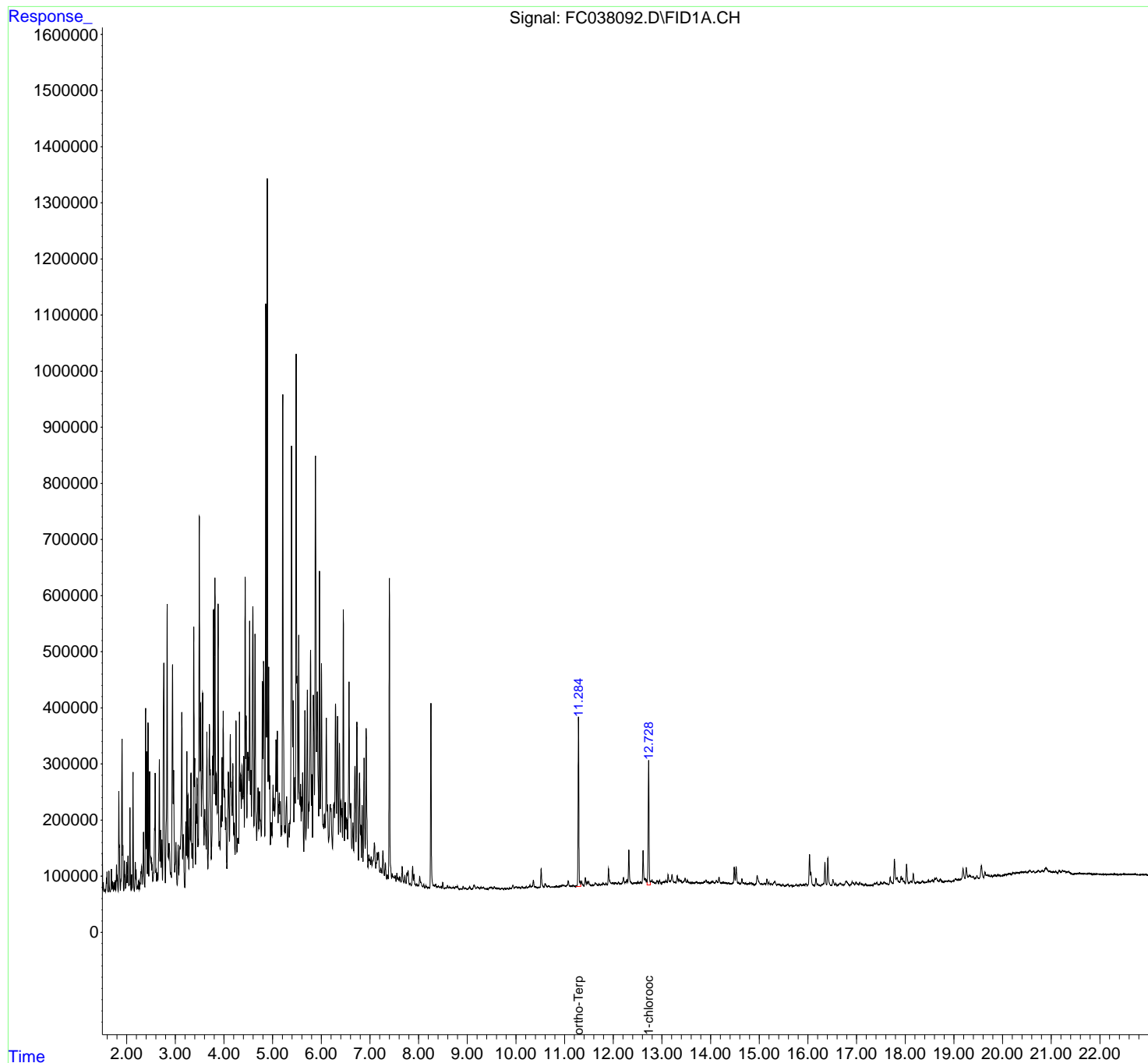
(m)=manual int.

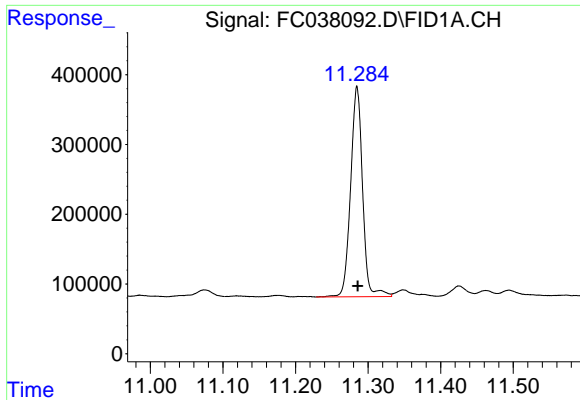
Data Path : Z:\pestpcbsrv\HPCHEM1\FID_C\Data\FC121118AL\
Data File : FC038092.D
Signal(s) : FID1A.CH
Acq On : 10 Dec 2018 19:40
Operator : AJ\SJ
Sample : J6319-01
Misc :
ALS Vial : 11 Sample Multiplier: 1

Instrument :
FID_C
ClientSampled :
055_BT-1-1

Integration File: autoint1.e
Quant Time: Dec 11 09:42:36 2018
Quant Method : Z:\pestpcbsrv\HPCHEM1\FID_C\Method\Alaphatic EPH 121018.M
Quant Title : GC Extractables
QLast Update : Mon Dec 10 17:11:09 2018
Response via : Initial Calibration
Integrator: ChemStation 6890 Scale Mode: Large solvent peaks clipped

Volume Inj. : 1 ul
Signal Phase : Rxi-1ms
Signal Info : 20M x 0.18mm x 0.18um

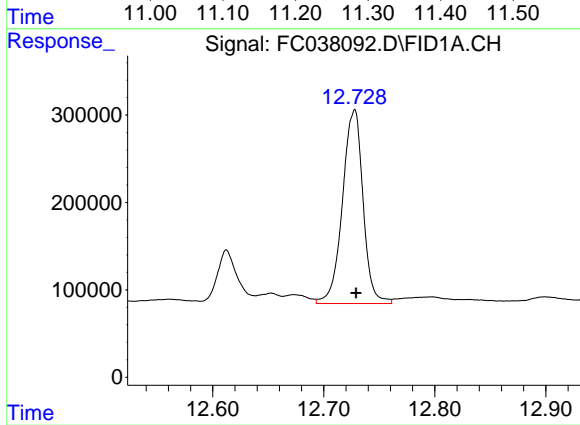




#9 ortho-Terphenyl (SURR)

R.T.: 11.285 min
Delta R.T.: -0.001 min
Response: 3447276
Conc: 26.44 ug/ml

Instrument :
FID_C
ClientSampled :
055_BT-1-1



#12 1-chlorooctadecane (SURR)

R.T.: 12.727 min
Delta R.T.: -0.002 min
Response: 2862580
Conc: 28.39 ug/ml