

Data Path : Z:\pestpcbsrv\HPCHEM1\FID_C\Data\FC121120AL\
 Data File : FC051244.D
 Signal(s) : FID1A.CH
 Acq On : 11 Dec 2020 12:06
 Operator : DD\AJ
 Sample : 20 PPM ALIPHATIC HC STD
 Misc :
 ALS Vial : 2 Sample Multiplier: 1

Instrument :
 FID_C
 ClientSampled :

Integration File: autoint1.e
 Quant Time: Dec 11 23:51:36 2020
 Quant Method : Z:\pestpcbsrv\HPCHEM1\FID_C\Method\Alaphatic EPH 112720.M
 Quant Title : GC Extractables
 QLast Update : Mon Nov 30 10:42:25 2020
 Response via : Initial Calibration
 Integrator: ChemStation 6890 Scale Mode: Large solvent peaks clipped

Volume Inj. : 1 ul
 Signal Phase : Rxi-1ms
 Signal Info : 20M x 0.18mm x 0.18um

Compound	R.T.	Response	Conc Units

System Monitoring Compounds			
9) S ortho-Terphenyl (SURR)	11.581	2267627	18.429 ug/ml
Spiked Amount	50.000	Recovery	= 36.86%
12) S 1-chlorooctadecane (S...	13.015	1747338	17.912 ug/ml
Spiked Amount	50.000	Recovery	= 35.82%
Target Compounds			
1) T n-Nonane (C9)	3.335	2221114	20.871 ug/ml
2) T n-Decane (C10)	4.404	2234318	21.037 ug/ml
3) T A~Naphthalene (C11.7)	5.996	2327411	20.702 ug/ml
4) T n-Dodecane (C12)	6.423	2264154	20.809 ug/ml
5) T A~2-methylnaphthalene...	7.054	2281752	20.190 ug/ml
6) T n-Tetradecane (C14)	8.219	2230336	20.613 ug/ml
7) T n-Hexadecane (C16)	9.820	2165477	20.179 ug/ml
8) T n-Octadecane (C18)	11.261	2206151	19.342 ug/ml
10) T n-Eicosane (C20)	12.570	2153920	18.541 ug/ml
11) T n-Heneicosane (C21)	13.181	2109788	18.210 ug/ml
13) T n-Docosane (C22)	13.766	2088174	18.029 ug/ml
14) T n-Tetracosane (C24)	14.869	2040320	17.740 ug/ml
15) T n-Hexacosane (C26)	15.888	1986180	17.640 ug/ml
16) T n-Octacosane (C28)	16.837	2006664	18.123 ug/ml
17) T n-Tricontane (C30)	17.723	2033390	19.142 ug/ml
18) T n-Dotriacontane (C32)	18.555	1936453	19.818 ug/ml
19) T n-Tetratriacontane (C34)	19.337	1843698	20.658 ug/ml
20) T n-Hexatriacontane (C36)	20.075	1765329	21.166 ug/ml
21) T n-Octatriacontane (C38)	20.812	1670296	21.448 ug/ml
22) T n-Tetracontane (C40)	21.727	1693342	20.451 ug/ml

(f)=RT Delta > 1/2 Window

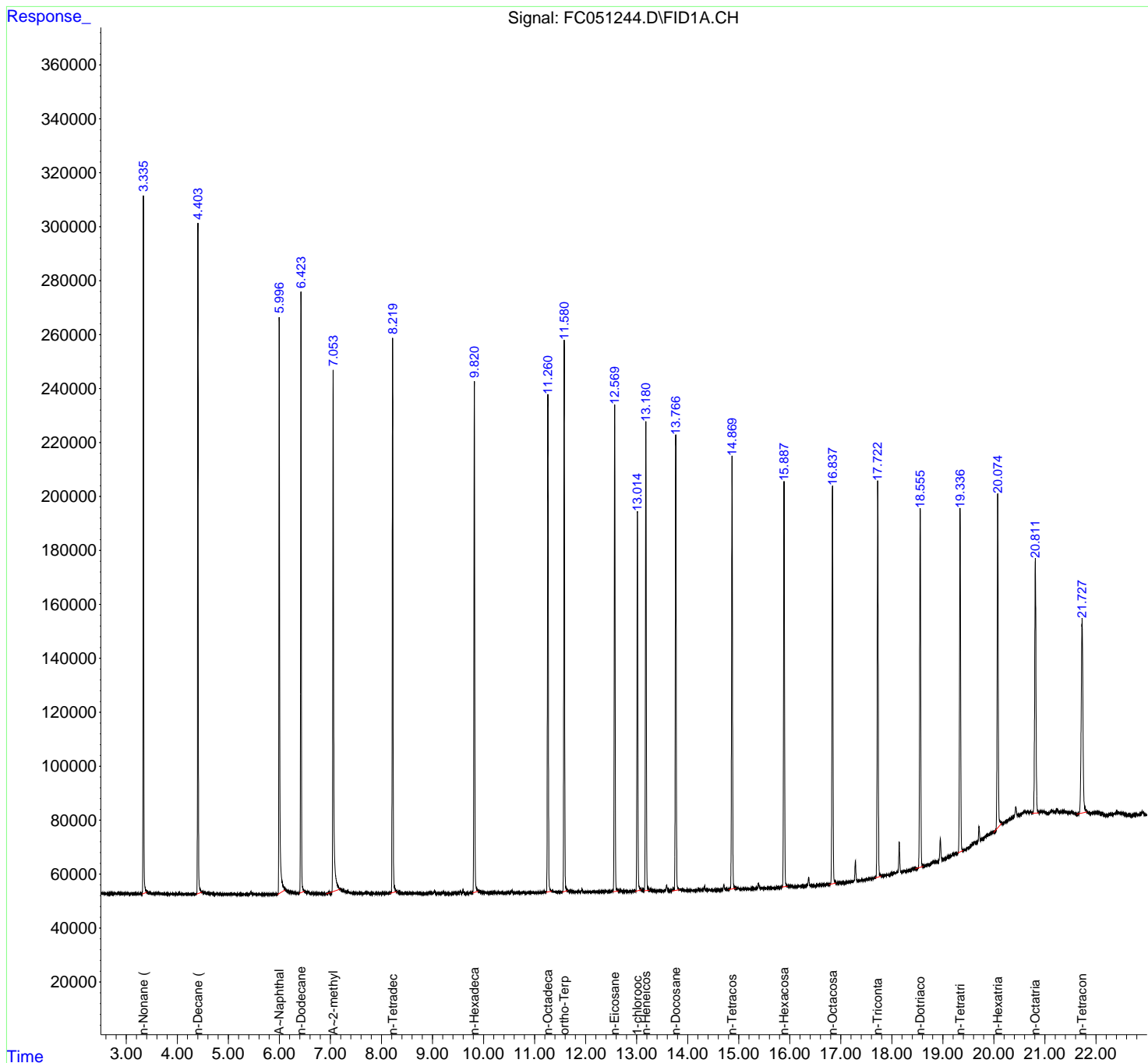
(m)=manual int.

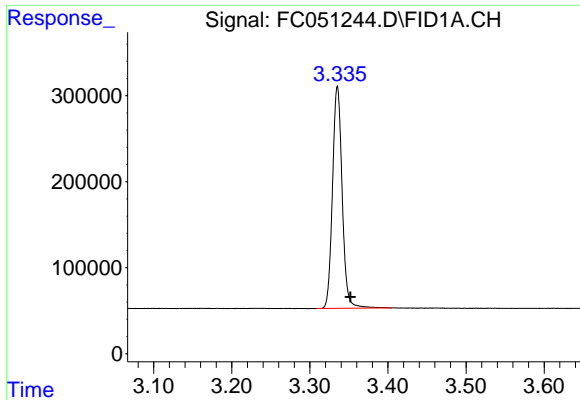
Data Path : Z:\pestpcbsrv\HPCHEM1\FID_C\Data\FC121120AL\
 Data File : FC051244.D
 Signal(s) : FID1A.CH
 Acq On : 11 Dec 2020 12:06
 Operator : DD\AJ
 Sample : 20 PPM ALIPHATIC HC STD
 Misc :
 ALS Vial : 2 Sample Multiplier: 1

Instrument :
 FID_C
 ClientSampled :

Integration File: autoint1.e
 Quant Time: Dec 11 23:51:36 2020
 Quant Method : Z:\pestpcbsrv\HPCHEM1\FID_C\Method\Aliphatic EPH 112720.M
 Quant Title : GC Extractables
 QLast Update : Mon Nov 30 10:42:25 2020
 Response via : Initial Calibration
 Integrator: ChemStation 6890 Scale Mode: Large solvent peaks clipped

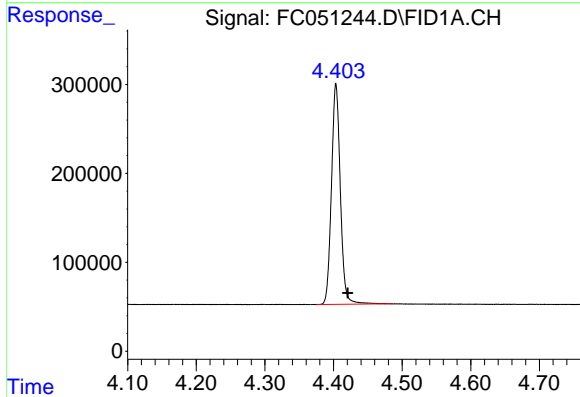
Volume Inj. : 1 ul
 Signal Phase : Rxi-1ms
 Signal Info : 20M x 0.18mm x 0.18um



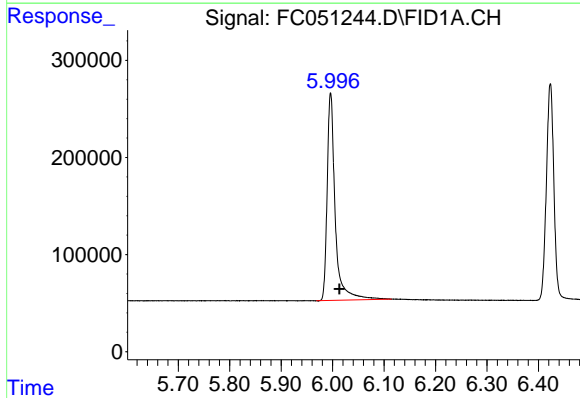


#1 n-Nonane (C9)
 R.T.: 3.335 min
 Delta R.T.: -0.017 min
 Response: 2221114
 Conc: 20.87 ug/ml

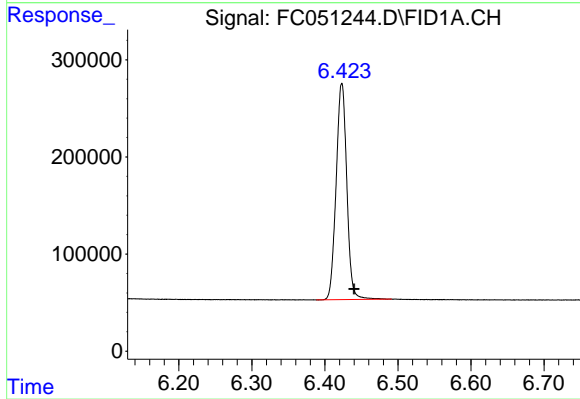
Instrument :
 FID_C
 ClientSampleId :



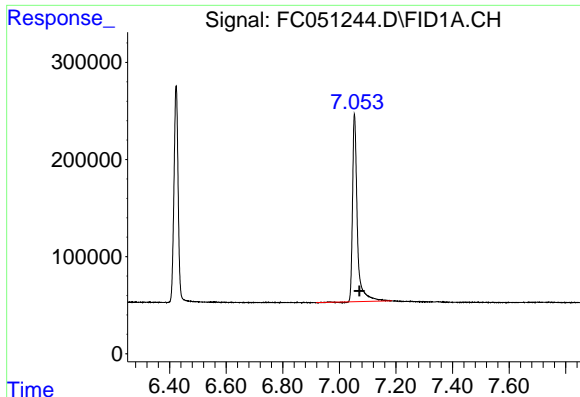
#2 n-Decane (C10)
 R.T.: 4.404 min
 Delta R.T.: -0.017 min
 Response: 2234318
 Conc: 21.04 ug/ml



#3 A~Naphthalene (C11.7)
 R.T.: 5.996 min
 Delta R.T.: -0.017 min
 Response: 2327411
 Conc: 20.70 ug/ml



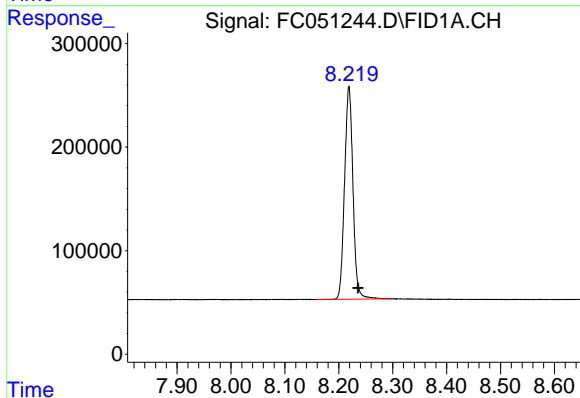
#4 n-Dodecane (C12)
 R.T.: 6.423 min
 Delta R.T.: -0.017 min
 Response: 2264154
 Conc: 20.81 ug/ml



#5 A~2-methylnaphthalene (C12.89)

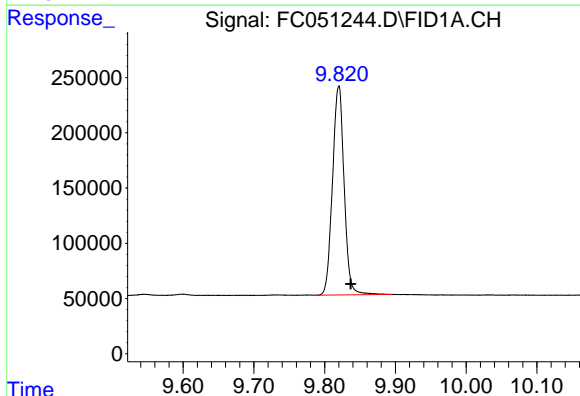
R.T.: 7.054 min
Delta R.T.: -0.018 min
Response: 2281752
Conc: 20.19 ug/ml

Instrument :
FID_C
ClientSampled :



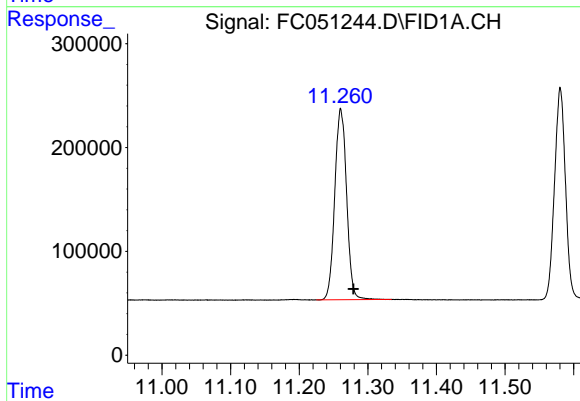
#6 n-Tetradecane (C14)

R.T.: 8.219 min
Delta R.T.: -0.017 min
Response: 2230336
Conc: 20.61 ug/ml



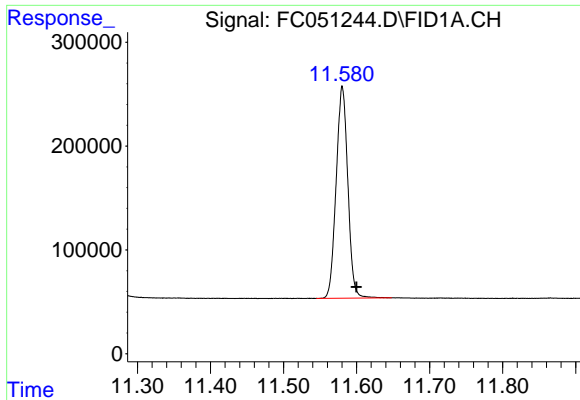
#7 n-Hexadecane (C16)

R.T.: 9.820 min
Delta R.T.: -0.017 min
Response: 2165477
Conc: 20.18 ug/ml



#8 n-Octadecane (C18)

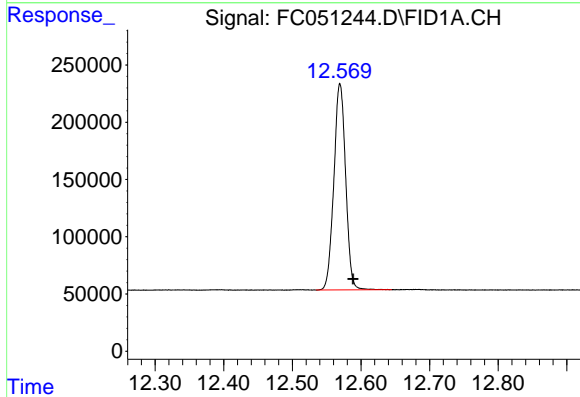
R.T.: 11.261 min
Delta R.T.: -0.018 min
Response: 2206151
Conc: 19.34 ug/ml



#9 ortho-Terphenyl (SURR)

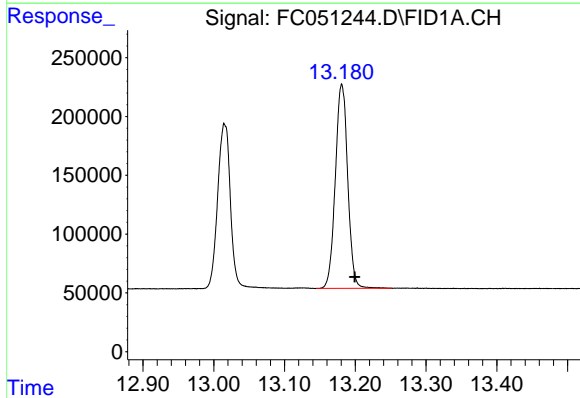
R.T.: 11.581 min
 Delta R.T.: -0.019 min
 Response: 2267627
 Conc: 18.43 ug/ml

Instrument :
 FID_C
 ClientSampled :



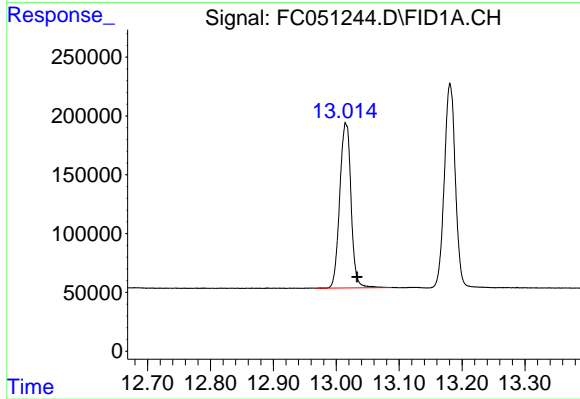
#10 n-Eicosane (C20)

R.T.: 12.570 min
 Delta R.T.: -0.019 min
 Response: 2153920
 Conc: 18.54 ug/ml



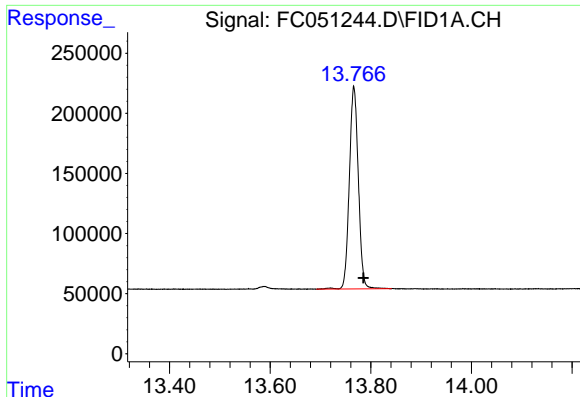
#11 n-Heneicosane (C21)

R.T.: 13.181 min
 Delta R.T.: -0.018 min
 Response: 2109788
 Conc: 18.21 ug/ml



#12 1-chlorooctadecane (SURR)

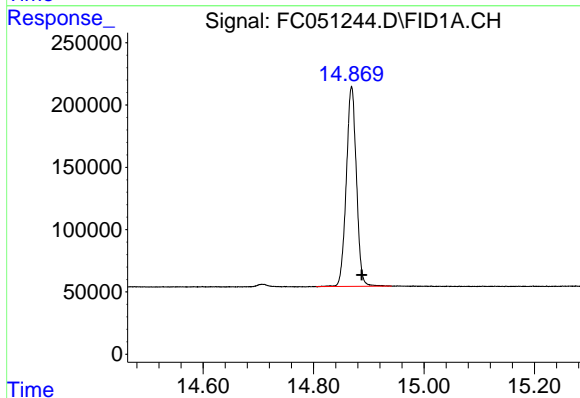
R.T.: 13.015 min
 Delta R.T.: -0.018 min
 Response: 1747338
 Conc: 17.91 ug/ml



#13 n-Docosane (C22)

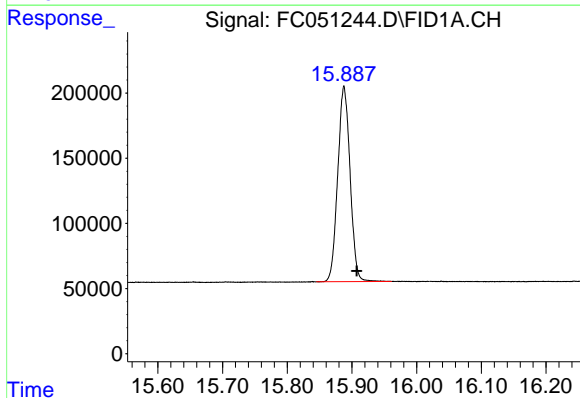
R.T.: 13.766 min
Delta R.T.: -0.019 min
Response: 2088174
Conc: 18.03 ug/ml

Instrument :
FID_C
ClientSampleId :



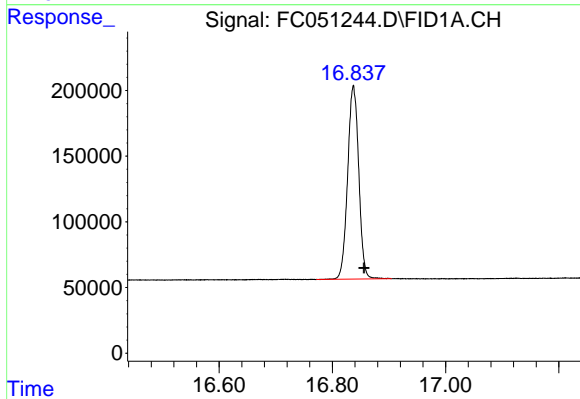
#14 n-Tetracosane (C24)

R.T.: 14.869 min
Delta R.T.: -0.018 min
Response: 2040320
Conc: 17.74 ug/ml



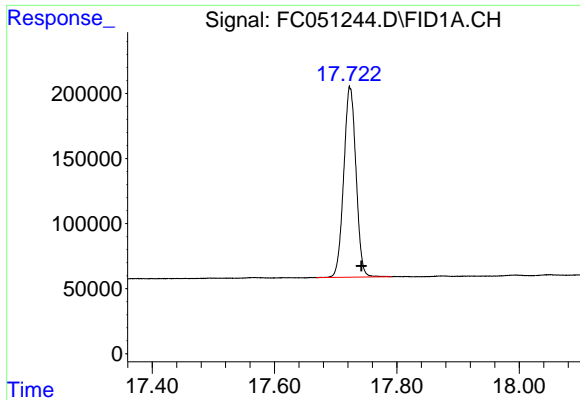
#15 n-Hexacosane (C26)

R.T.: 15.888 min
Delta R.T.: -0.019 min
Response: 1986180
Conc: 17.64 ug/ml



#16 n-Octacosane (C28)

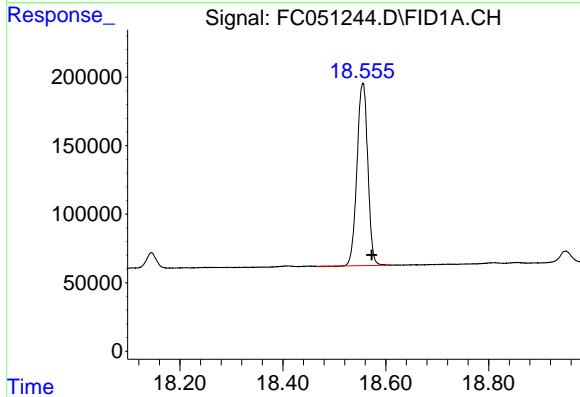
R.T.: 16.837 min
Delta R.T.: -0.019 min
Response: 2006664
Conc: 18.12 ug/ml



#17 n-Tricontane (C30)

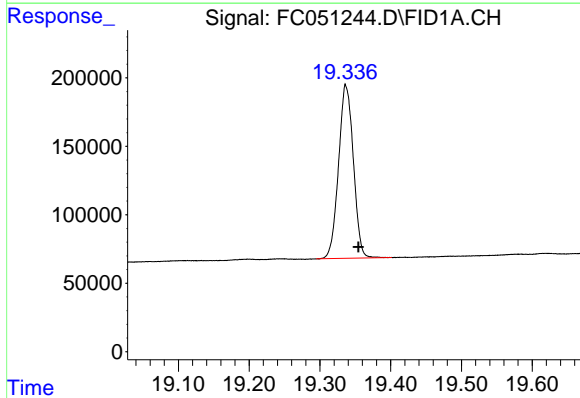
R.T.: 17.723 min
Delta R.T.: -0.018 min
Response: 2033390
Conc: 19.14 ug/ml

Instrument :
FID_C
ClientSampled :



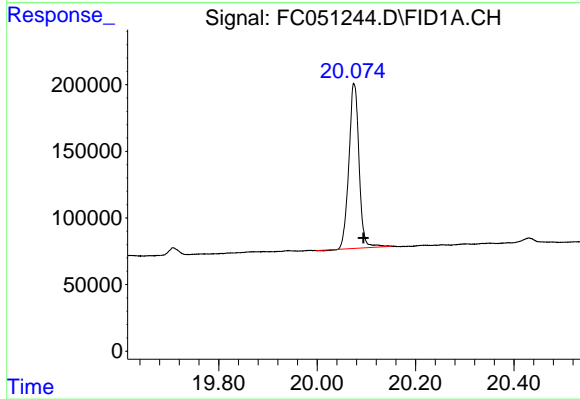
#18 n-Dotriacontane (C32)

R.T.: 18.555 min
Delta R.T.: -0.018 min
Response: 1936453
Conc: 19.82 ug/ml



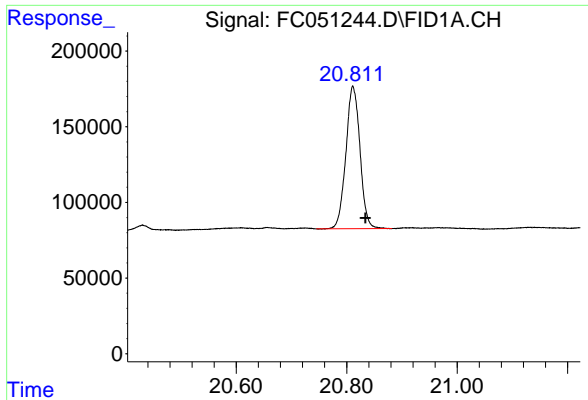
#19 n-Tetratriacontane (C34)

R.T.: 19.337 min
Delta R.T.: -0.017 min
Response: 1843698
Conc: 20.66 ug/ml



#20 n-Hexatriacontane (C36)

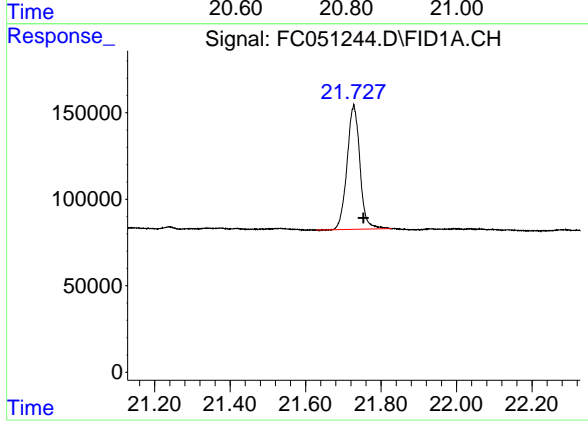
R.T.: 20.075 min
Delta R.T.: -0.019 min
Response: 1765329
Conc: 21.17 ug/ml



#21 n-Octatriacontane (C38)

R.T.: 20.812 min
Delta R.T.: -0.023 min
Response: 1670296
Conc: 21.45 ug/ml

Instrument :
FID_C
ClientSampleId :



#22 n-Tetracontane (C40)

R.T.: 21.727 min
Delta R.T.: -0.026 min
Response: 1693342
Conc: 20.45 ug/ml