

Data Path : Z:\pestpcbsrv\HPCHEM1\FID_C\Data\FC121121AL\
 Data File : FC057406.D
 Signal(s) : FID1A.CH
 Acq On : 12 Dec 2021 00:26
 Operator : AJ\MA
 Sample : M5017-35
 Misc :
 ALS Vial : 24 Sample Multiplier: 1

Integration File: autoint1.e
 Quant Time: Dec 12 02:39:16 2021
 Quant Method : Z:\pestpcbsrv\HPCHEM1\FID_C\Method\Aliphatic EPH 120921.M
 Quant Title : GC Extractables
 QLast Update : Thu Dec 09 22:19:01 2021
 Response via : Initial Calibration
 Integrator: ChemStation 6890 Scale Mode: Large solvent peaks clipped

Volume Inj. : 1 ul
 Signal Phase : Rxi-1ms
 Signal Info : 20M x 0.18mm x 0.18um

Compound	R.T.	Response	Conc Units

System Monitoring Compounds			
9) S ortho-Terphenyl (SURR)	11.569	5140456	50.943 ug/ml
Spiked Amount	50.000	Recovery	= 101.89%
12) S 1-chlorooctadecane (S...	13.000	3935850	51.833 ug/ml
Spiked Amount	50.000	Recovery	= 103.67%

Target Compounds

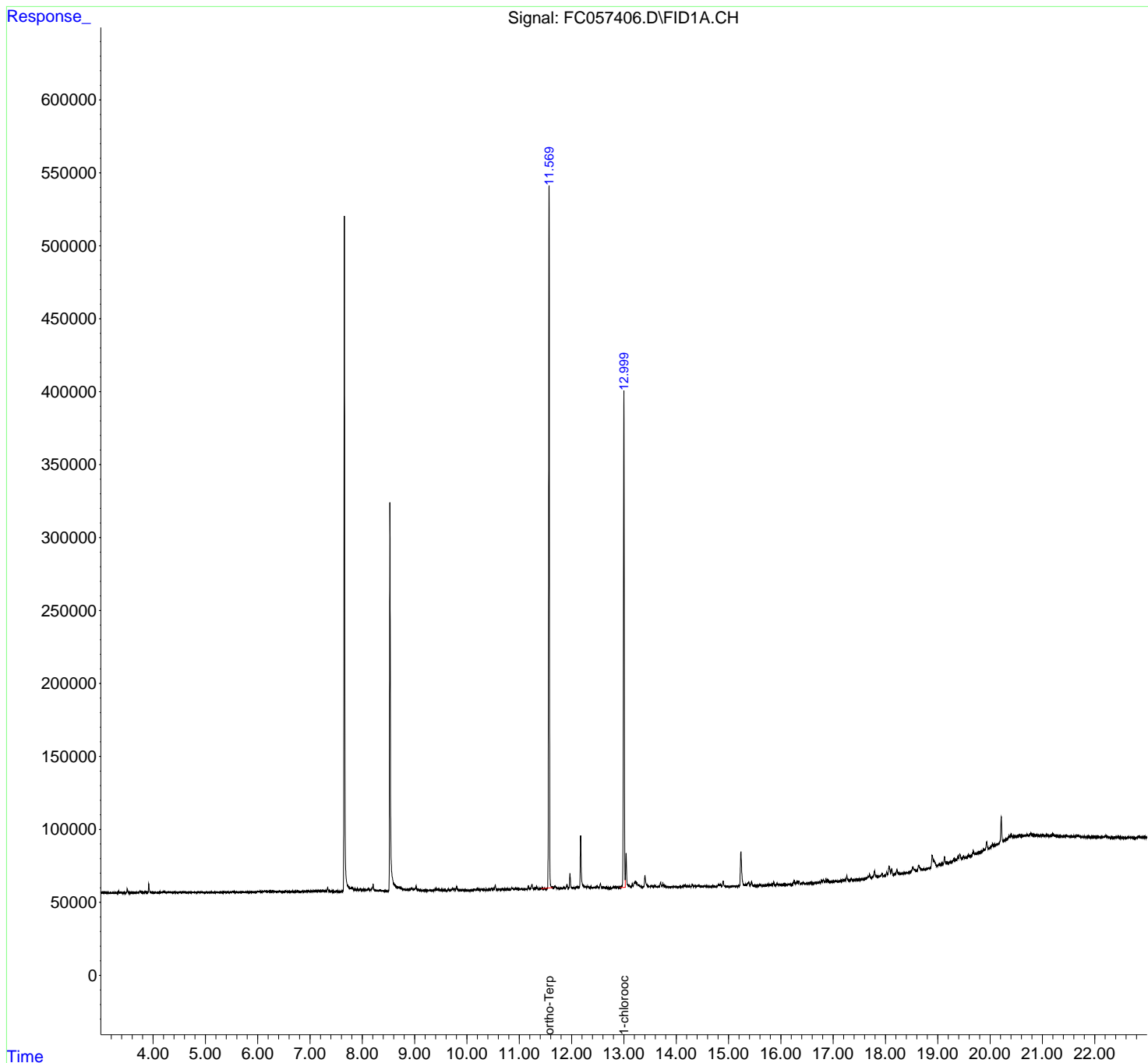
(f)=RT Delta > 1/2 Window

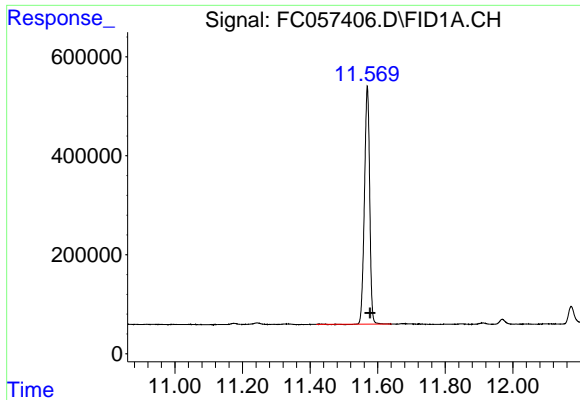
(m)=manual int.

Data Path : Z:\pestpcbsrv\HPCHEM1\FID_C\Data\FC121121AL\
Data File : FC057406.D
Signal(s) : FID1A.CH
Acq On : 12 Dec 2021 00:26
Operator : AJ\MA
Sample : M5017-35
Misc :
ALS Vial : 24 Sample Multiplier: 1

Integration File: autoint1.e
Quant Time: Dec 12 02:39:16 2021
Quant Method : Z:\pestpcbsrv\HPCHEM1\FID_C\Method\Aliphatic EPH 120921.M
Quant Title : GC Extractables
QLast Update : Thu Dec 09 22:19:01 2021
Response via : Initial Calibration
Integrator: ChemStation 6890 Scale Mode: Large solvent peaks clipped

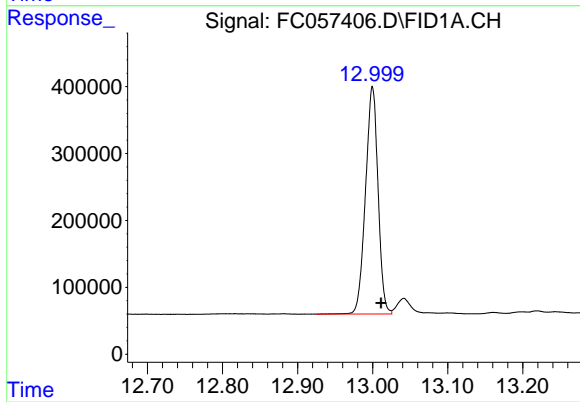
Volume Inj. : 1 ul
Signal Phase : Rxi-1ms
Signal Info : 20M x 0.18mm x 0.18um





#9 ortho-Terphenyl (SURR)

R.T.: 11.569 min
Delta R.T.: -0.009 min
Response: 5140456
Conc: 50.94 ug/ml



#12 1-chlorooctadecane (SURR)

R.T.: 13.000 min
Delta R.T.: -0.011 min
Response: 3935850
Conc: 51.83 ug/ml