

Data Path : Z:\pestpcbsrv\HPCHEM1\FID_C\Data\FC121124AL\
 Data File : FC067988.D
 Signal(s) : FID1A.ch
 Acq On : 11 Dec 2024 22:32
 Operator : YP/AJ
 Sample : P5194-01D
 Misc :
 ALS Vial : 15 Sample Multiplier: 1

Instrument :
 FID_C
 ClientSampleId :

Integration File: autoint1.e
 Quant Time: Dec 12 03:19:11 2024
 Quant Method : Z:\pestpcbsrv\HPCHEM1\FID_C\Method\Aliphatic EPH 121024.M
 Quant Title : GC Extractables
 QLast Update : Tue Dec 10 07:59:10 2024
 Response via : Initial Calibration
 Integrator: ChemStation

Volume Inj. : 1 ul
 Signal Phase : Rxi-1ms
 Signal Info : 20M x 0.18mm x 0.18um

Compound	R.T.	Response	Conc Units

System Monitoring Compounds			
12) S 1-chlorooctadecane (S... Spiked Amount 50.000	12.913	6756367 Recovery =	52.952 ug/ml 105.90%
Target Compounds			
4) T n-Dodecane (C12)	6.328	45762	0.284 ug/ml
6) T n-Tetradecane (C14)	8.121	51965	0.327 ug/ml
8) T n-Octadecane (C18)	11.158	29302	0.183 ug/ml
16) T n-Octacosane (C28)	16.746	188973	1.457 ug/ml
17) T n-Tricontane (C30)	17.608	304936	2.354 ug/ml
18) T n-Dotriacontane (C32)	18.452	56594	0.457 ug/ml
19) T n-Tetratriacontane (C34)	19.236	224395	2.056 ug/ml
20) T n-Hexatriacontane (C36)	19.974	707585	7.479 ug/ml
21) T n-Octatriacontane (C38)	20.694	1194208	13.201 ug/ml
22) T n-Tetracontane (C40)	21.573	1146923	13.013 ug/ml

(f)=RT Delta > 1/2 Window

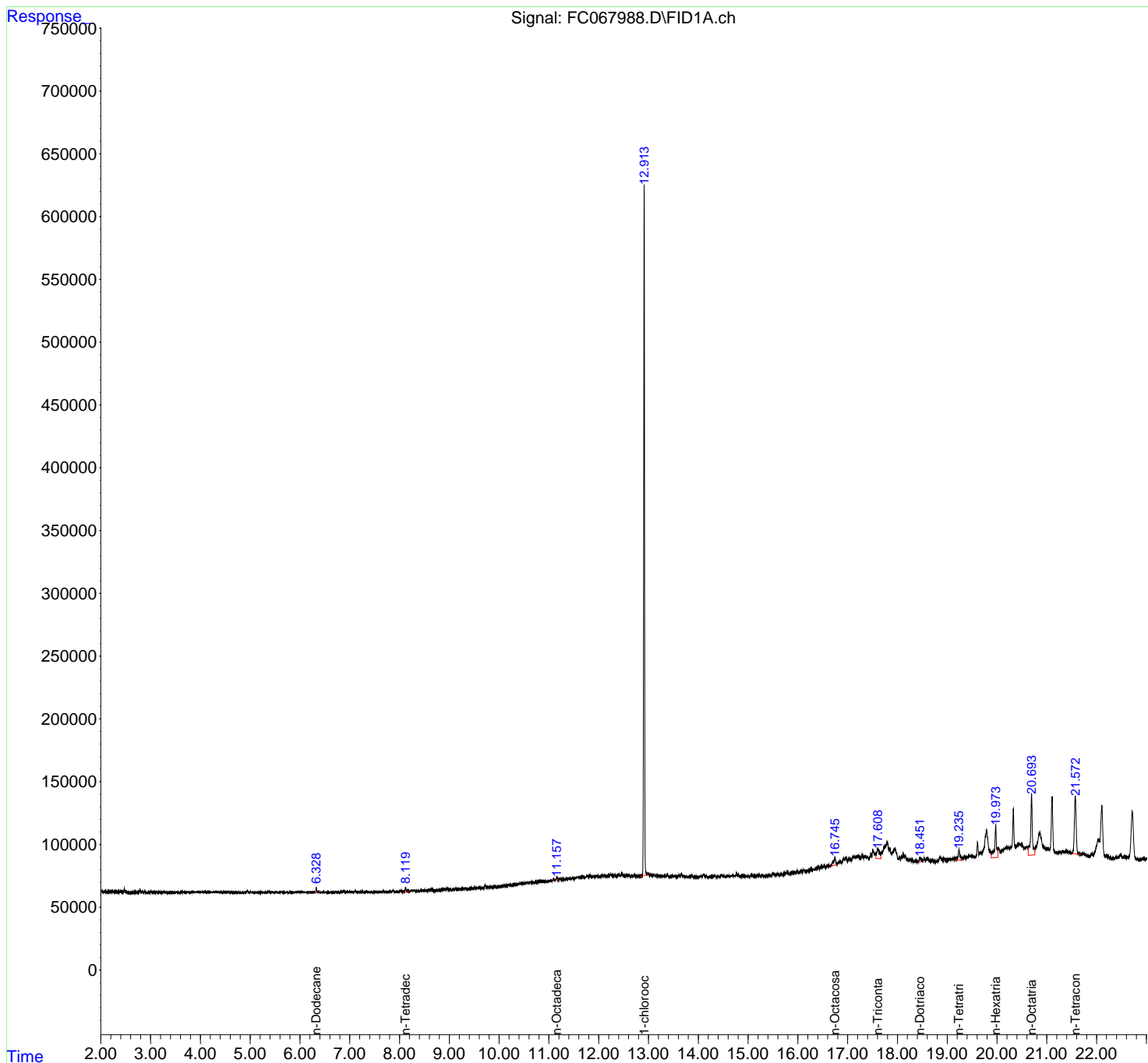
(m)=manual int.

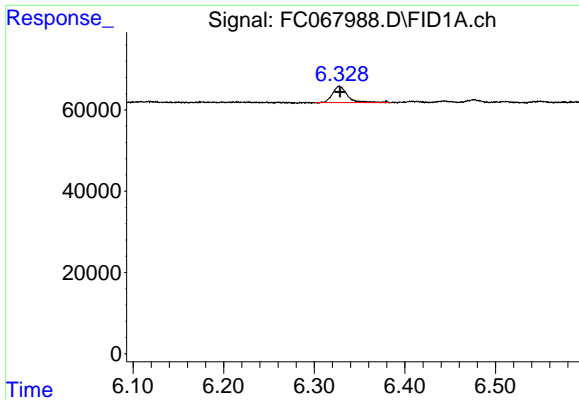
Data Path : Z:\pestpcbsrv\HPCHEM1\FID_C\Data\FC121124AL\
 Data File : FC067988.D
 Signal(s) : FID1A.ch
 Acq On : 11 Dec 2024 22:32
 Operator : YP/AJ
 Sample : P5194-01D
 Misc :
 ALS Vial : 15 Sample Multiplier: 1

Instrument :
 FID_C
 ClientSampleId :

Integration File: autoint1.e
 Quant Time: Dec 12 03:19:11 2024
 Quant Method : Z:\pestpcbsrv\HPCHEM1\FID_C\Method\Aliphatic EPH 121024.M
 Quant Title : GC Extractables
 QLast Update : Tue Dec 10 07:59:10 2024
 Response via : Initial Calibration
 Integrator: ChemStation

Volume Inj. : 1 ul
 Signal Phase : Rxi-1ms
 Signal Info : 20M x 0.18mm x 0.18um

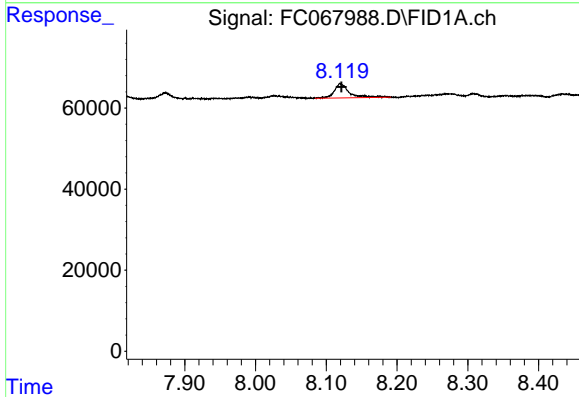




#4 n-Dodecane (C12)

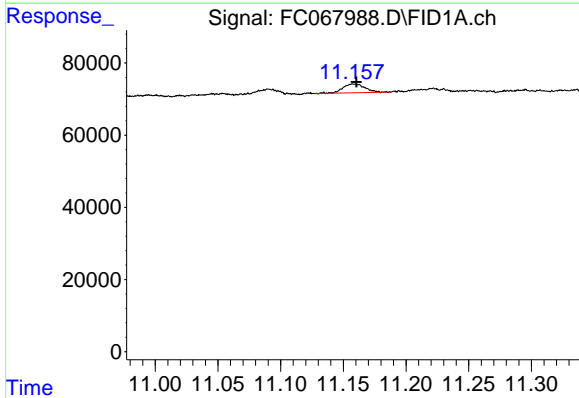
R.T.: 6.328 min
 Delta R.T.: 0.000 min
 Response: 45762
 Conc: 0.28 ug/ml

Instrument :
 FID_C
 ClientSampleId :



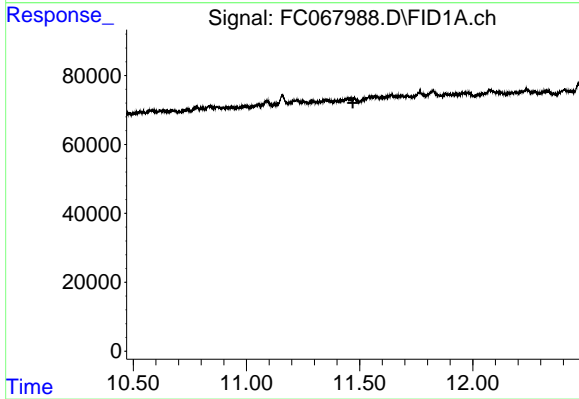
#6 n-Tetradecane (C14)

R.T.: 8.121 min
 Delta R.T.: -0.001 min
 Response: 51965
 Conc: 0.33 ug/ml



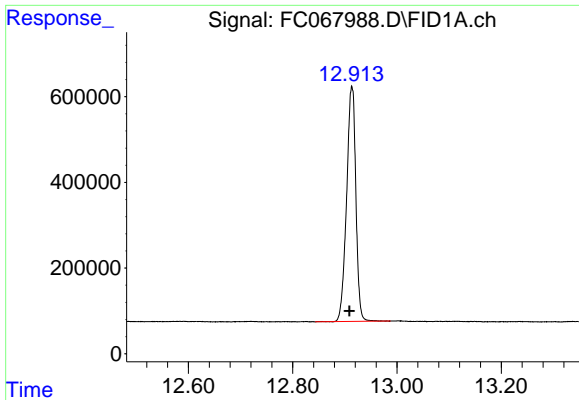
#8 n-Octadecane (C18)

R.T.: 11.158 min
 Delta R.T.: -0.002 min
 Response: 29302
 Conc: 0.18 ug/ml



#9 ortho-Terphenyl (SURR)

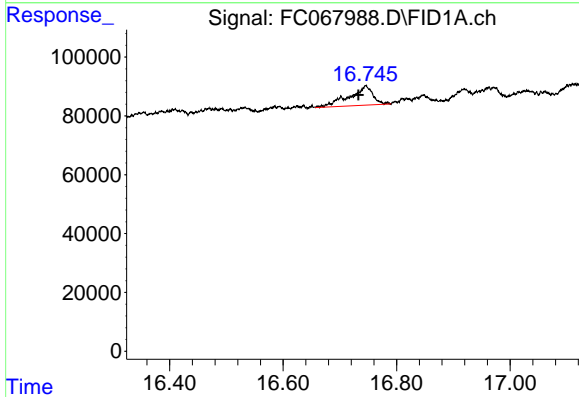
R.T.: 0.000 min
 Exp R.T. : 11.470 min
 Response: 0
 Conc: N.D.



#12 1-chlorooctadecane (SURR)

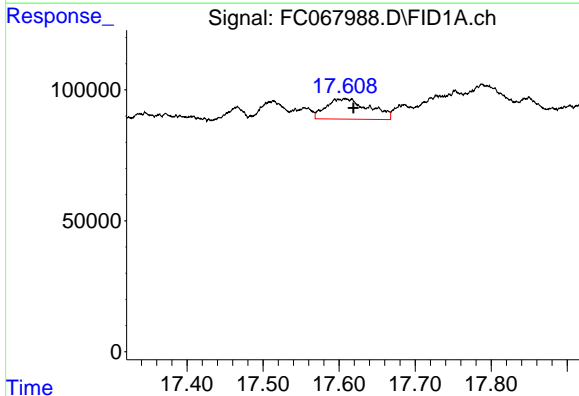
R.T.: 12.913 min
 Delta R.T.: 0.004 min
 Response: 6756367
 Conc: 52.95 ug/ml

Instrument :
 FID_C
 ClientSampleId :



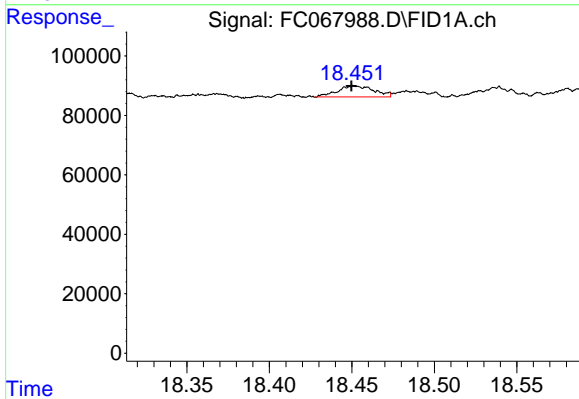
#16 n-Octacosane (C28)

R.T.: 16.746 min
 Delta R.T.: 0.013 min
 Response: 188973
 Conc: 1.46 ug/ml



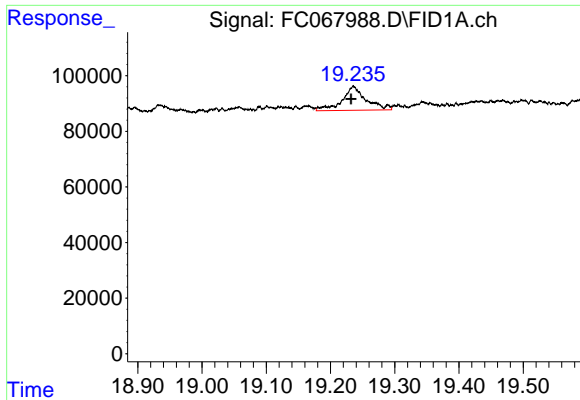
#17 n-Tricontane (C30)

R.T.: 17.608 min
 Delta R.T.: -0.011 min
 Response: 304936
 Conc: 2.35 ug/ml



#18 n-Dotriacontane (C32)

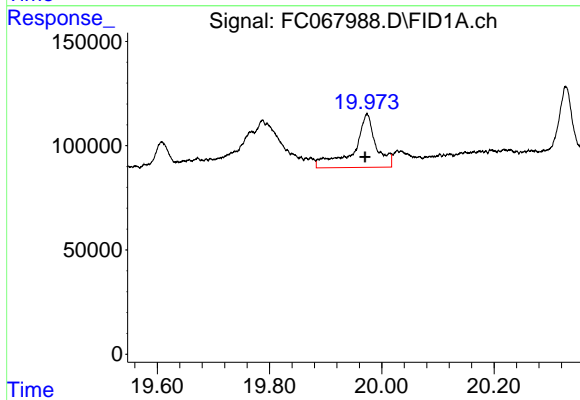
R.T.: 18.452 min
 Delta R.T.: 0.002 min
 Response: 56594
 Conc: 0.46 ug/ml



#19 n-Tetratriacontane (C34)

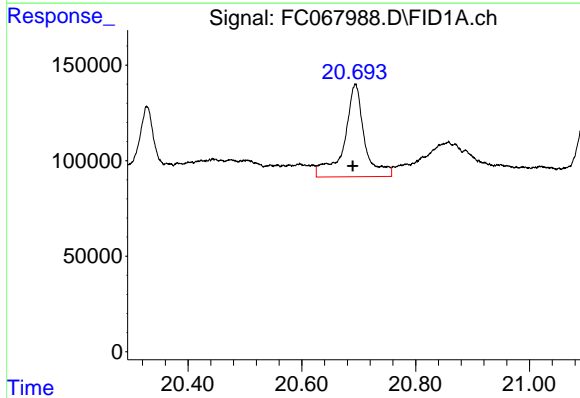
R.T.: 19.236 min
 Delta R.T.: 0.003 min
 Response: 224395
 Conc: 2.06 ug/ml

Instrument :
 FID_C
 ClientSampleId :



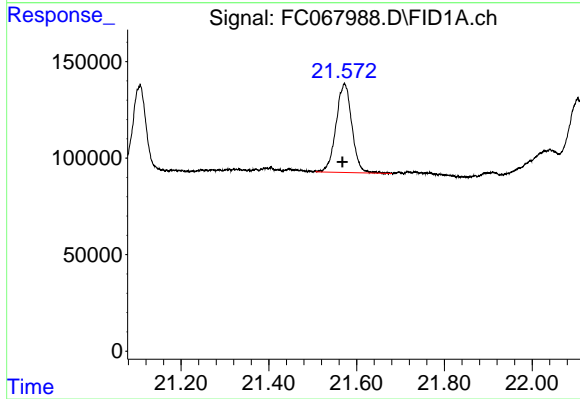
#20 n-Hexatriacontane (C36)

R.T.: 19.974 min
 Delta R.T.: 0.004 min
 Response: 707585
 Conc: 7.48 ug/ml



#21 n-Octatriacontane (C38)

R.T.: 20.694 min
 Delta R.T.: 0.005 min
 Response: 1194208
 Conc: 13.20 ug/ml



#22 n-Tetracontane (C40)

R.T.: 21.573 min
 Delta R.T.: 0.005 min
 Response: 1146923
 Conc: 13.01 ug/ml