

Data Path : Z:\pestpcbsrv\HPCHEM1\FID_C\Data\FC121223AL\
 Data File : FC065393.D
 Signal(s) : FID1A.ch
 Acq On : 12 Dec 2023 18:45
 Operator : YP/AJ
 Sample : 05760-05
 Misc :
 ALS Vial : 15 Sample Multiplier: 1

Instrument :
 FID_C
ClientSampleId :
 SLAB

Manual Integrations
APPROVED

Reviewed By :Yogesh Patel 12/13/2023
 Supervised By :Ankita Jodhani 12/13/2023

Integration File: autoint1.e
 Quant Time: Dec 12 22:35:54 2023
 Quant Method : Z:\pestpcbsrv\HPCHEM1\FID_C\Method\Aliphatic EPH 112423.M
 Quant Title : GC Extractables
 QLast Update : Fri Nov 24 13:28:29 2023
 Response via : Initial Calibration
 Integrator: ChemStation

Volume Inj. : 1 ul
 Signal Phase : Rxi-1ms
 Signal Info : 20M x 0.18mm x 0.18um

Compound	R.T.	Response	Conc Units
System Monitoring Compounds			
9) S ortho-Terphenyl (SURR)	11.520	15442971	66.564 ug/mlm
Spiked Amount	50.000	Recovery	= 133.13%
12) S 1-chlorooctadecane (S...	12.966	8516908	51.435 ug/mlm
Spiked Amount	50.000	Recovery	= 102.87%

Target Compounds

(f)=RT Delta > 1/2 Window

(m)=manual int.

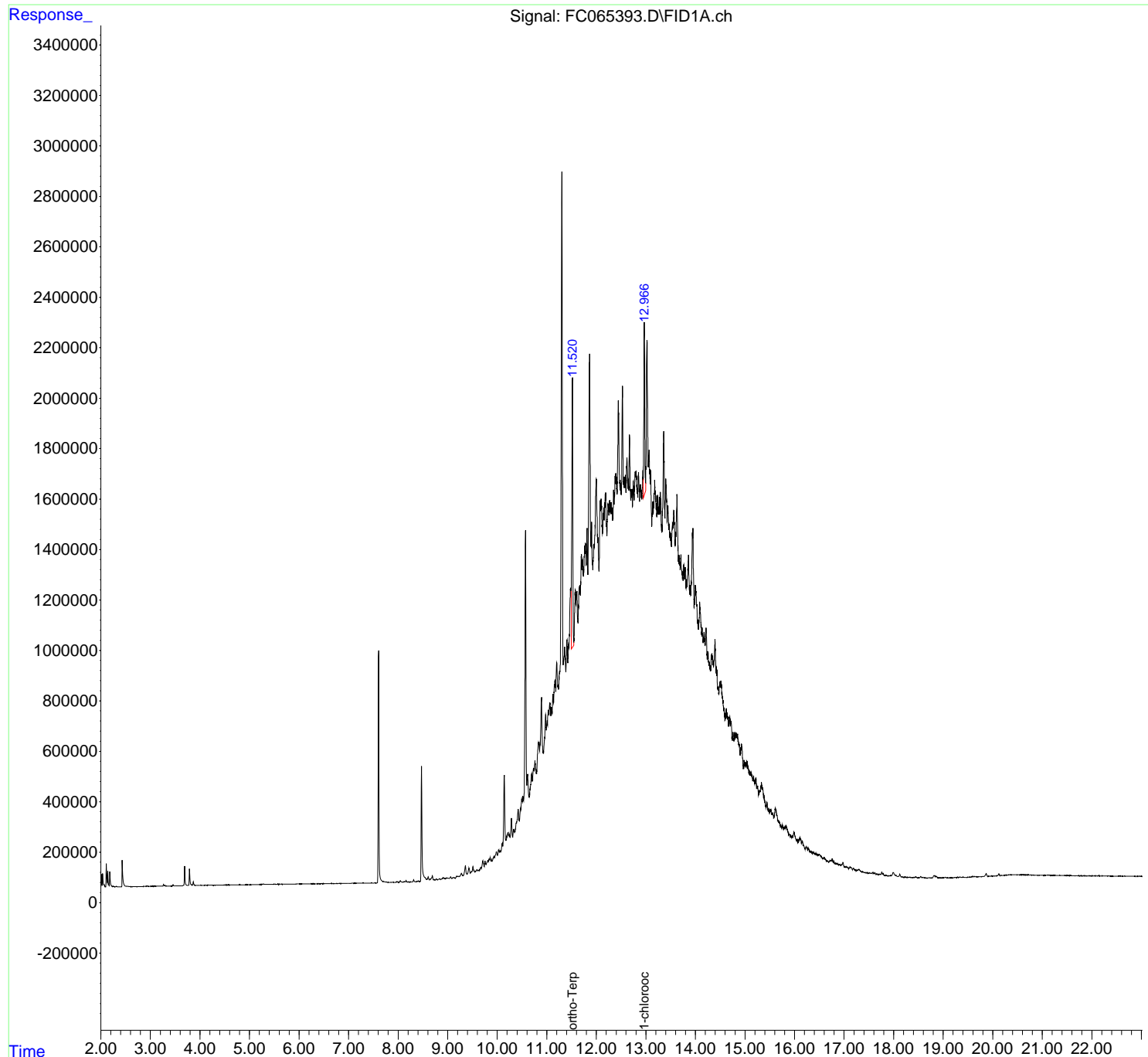
Data Path : Z:\pestpcbsrv\HPCHEM1\FID_C\Data\FC121223AL\
Data File : FC065393.D
Signal(s) : FID1A.ch
Acq On : 12 Dec 2023 18:45
Operator : YP/AJ
Sample : 05760-05
Misc :
ALS Vial : 15 Sample Multiplier: 1

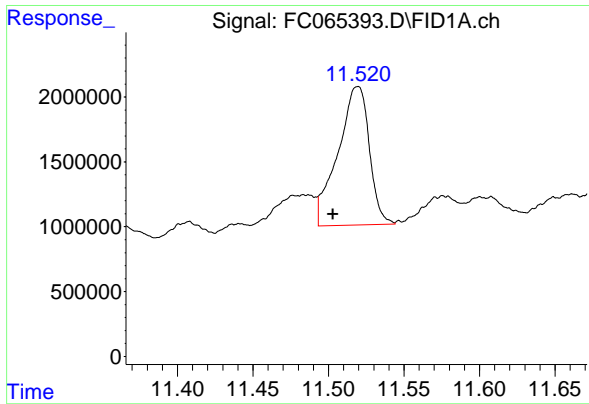
Instrument :
FID_C
ClientSampleId :
SLAB

Manual Integrations
APPROVED
Reviewed By :Yogesh Patel 12/13/2023
Supervised By :Ankita Jodhani 12/13/2023

Integration File: autoint1.e
Quant Time: Dec 12 22:35:54 2023
Quant Method : Z:\pestpcbsrv\HPCHEM1\FID_C\Method\Aliphatic EPH 112423.M
Quant Title : GC Extractables
QLast Update : Fri Nov 24 13:28:29 2023
Response via : Initial Calibration
Integrator: ChemStation

Volume Inj. : 1 ul
Signal Phase : Rxi-1ms
Signal Info : 20M x 0.18mm x 0.18um





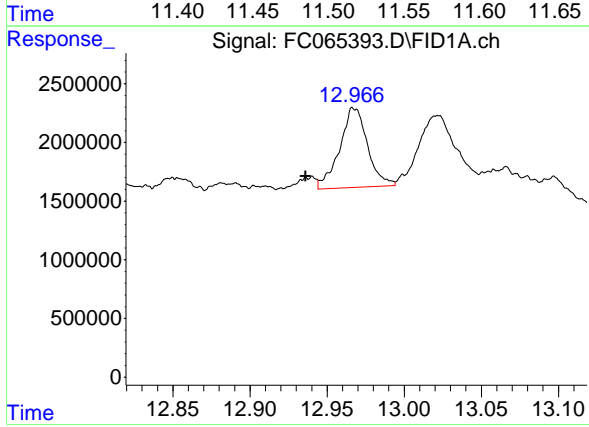
#9 ortho-Terphenyl (SURR)

R.T.: 11.520 min
 Delta R.T.: 0.016 min
 Response: 15442971
 Conc: 66.56 ug/ml

Instrument : FID_C
 ClientSampleId : SLAB

Manual Integrations
 APPROVED

Reviewed By :Yogesh Patel 12/13/2023
 Supervised By :Ankita Jodhani 12/13/2023



#12 1-chlorooctadecane (SURR)

R.T.: 12.966 min
 Delta R.T.: 0.030 min
 Response: 8516908
 Conc: 51.44 ug/ml m