

Data Path : Z:\pestpcbsrv\HPCHEM1\FID_C\Data\FC121423AL\
 Data File : FC065447.D
 Signal(s) : FID1A.ch
 Acq On : 14 Dec 2023 15:22
 Operator : YP/AJ
 Sample : PB157779BS
 Misc :
 ALS Vial : 12 Sample Multiplier: 1

Instrument :
 FID_C
 ClientSampleId :
 PB157779BS

Integration File: autoint1.e
 Quant Time: Dec 14 23:31:31 2023
 Quant Method : Z:\pestpcbsrv\HPCHEM1\FID_C\Method\Aliphatic EPH 112423.M
 Quant Title : GC Extractables
 QLast Update : Fri Nov 24 13:28:29 2023
 Response via : Initial Calibration
 Integrator: ChemStation

Volume Inj. : 1 ul
 Signal Phase : Rxi-1ms
 Signal Info : 20M x 0.18mm x 0.18um

Compound	R.T.	Response	Conc Units

System Monitoring Compounds			
9) S ortho-Terphenyl (SURR)	11.504	12119102	52.237 ug/ml
Spiked Amount	50.000	Recovery	= 104.47%
12) S 1-chlorooctadecane (S...	12.935	9308949	56.218 ug/ml
Spiked Amount	50.000	Recovery	= 112.44%
Target Compounds			
1) T n-Nonane (C9)	3.314	9058200	45.237 ug/ml
2) T n-Decane (C10)	4.366	9722247	48.371 ug/ml
3) T A~Naphthalene (C11.7)	5.941	11476238	56.525 ug/ml
4) T n-Dodecane (C12)	6.372	10895631	53.578 ug/ml
5) T A~2-methylnaphthalene...	6.996	11832436	60.878 ug/ml
6) T n-Tetradecane (C14)	8.163	12226860	61.524 ug/ml
7) T n-Hexadecane (C16)	9.755	12485707	63.031 ug/ml
8) T n-Octadecane (C18)	11.191	12567403	63.451 ug/ml
10) T n-Eicosane (C20)	12.494	12343054	65.226 ug/ml
11) T n-Heneicosane (C21)	13.102	11667522	63.145 ug/ml
13) T n-Docosane (C22)	13.685	11464578	63.547 ug/ml
14) T n-Tetracosane (C24)	14.780	21989848	126.835 ug/ml
15) T n-Hexacosane (C26)	15.801	10620768	63.783 ug/ml
16) T n-Octacosane (C28)	16.744	10372978	64.854 ug/ml
17) T n-Tricontane (C30)	17.628	10133845	63.643 ug/ml
18) T n-Dotriacontane (C32)	18.455	9919003	63.097 ug/ml
19) T n-Tetratriacontane (C34)	19.236	9844299	63.792 ug/ml
20) T n-Hexatriacontane (C36)	19.973	9591404	62.571 ug/ml
21) T n-Octatriacontane (C38)	20.690	9622767	63.282 ug/ml
22) T n-Tetracontane (C40)	21.564	9674521	64.537 ug/ml

(f)=RT Delta > 1/2 Window

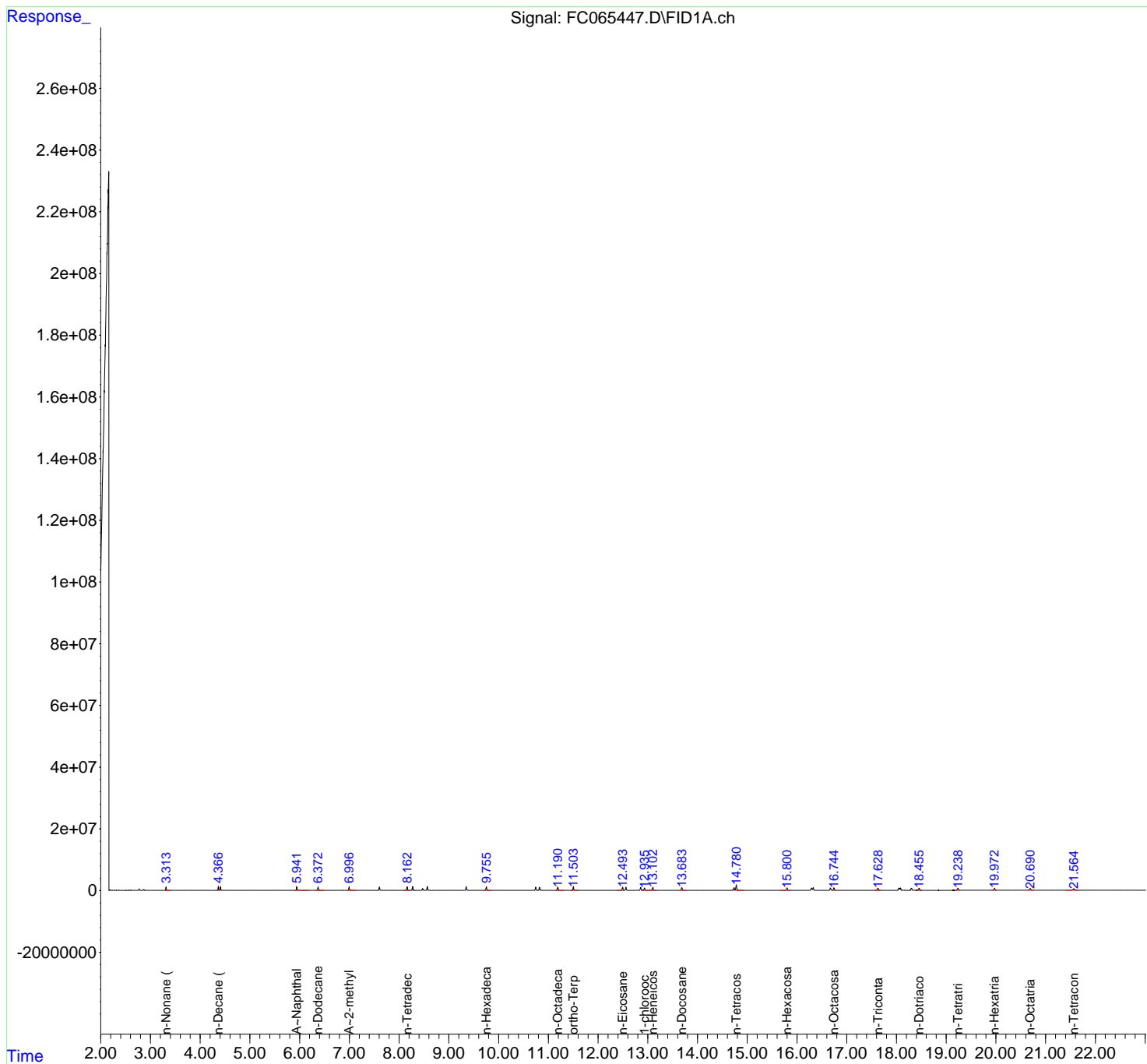
(m)=manual int.

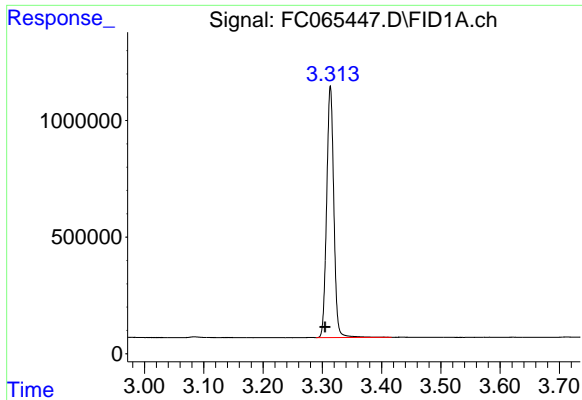
Data Path : Z:\pestpcbsrv\HPCHEM1\FID_C\Data\FC121423AL\
 Data File : FC065447.D
 Signal(s) : FID1A.ch
 Acq On : 14 Dec 2023 15:22
 Operator : YP/AJ
 Sample : PB157779BS
 Misc :
 ALS Vial : 12 Sample Multiplier: 1

Instrument :
 FID_C
 ClientSampleId :
 PB157779BS

Integration File: autoint1.e
 Quant Time: Dec 14 23:31:31 2023
 Quant Method : Z:\pestpcbsrv\HPCHEM1\FID_C\Method\Aliphatic EPH 112423.M
 Quant Title : GC Extractables
 QLast Update : Fri Nov 24 13:28:29 2023
 Response via : Initial Calibration
 Integrator: ChemStation

Volume Inj. : 1 ul
 Signal Phase : Rxi-1ms
 Signal Info : 20M x 0.18mm x 0.18um

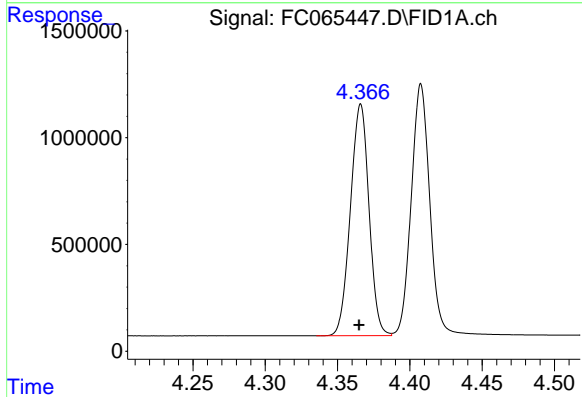




#1 n-Nonane (C9)

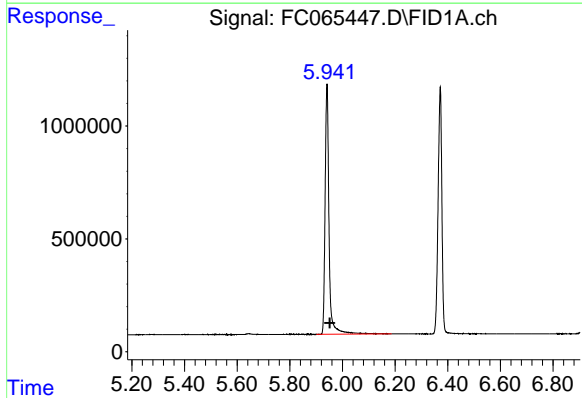
R.T.: 3.314 min
 Delta R.T.: 0.009 min
 Response: 9058200
 Conc: 45.24 ug/ml

Instrument :
 FID_C
 ClientSampleId :
 PB157779BS



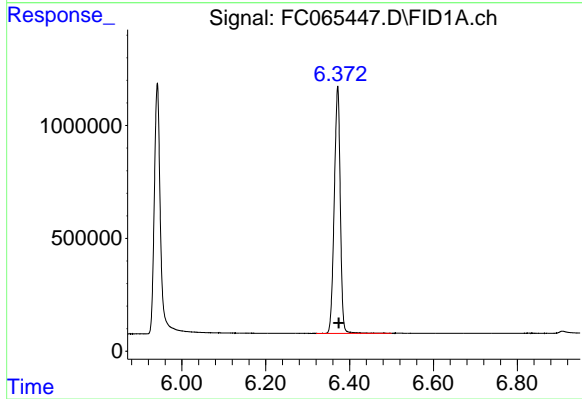
#2 n-Decane (C10)

R.T.: 4.366 min
 Delta R.T.: 0.001 min
 Response: 9722247
 Conc: 48.37 ug/ml



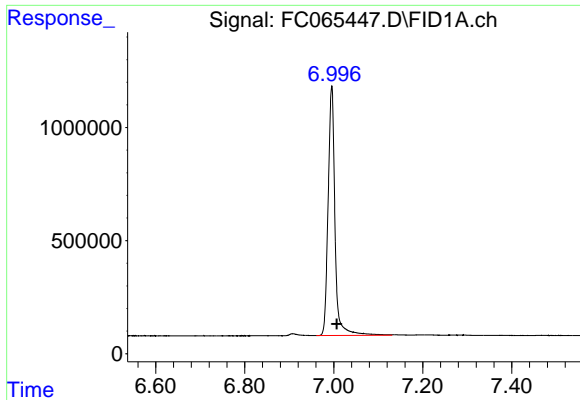
#3 A~Naphthalene (C11.7)

R.T.: 5.941 min
 Delta R.T.: -0.011 min
 Response: 11476238
 Conc: 56.53 ug/ml



#4 n-Dodecane (C12)

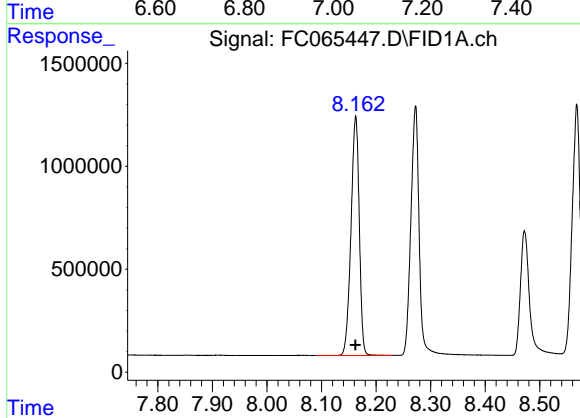
R.T.: 6.372 min
 Delta R.T.: -0.003 min
 Response: 10895631
 Conc: 53.58 ug/ml



#5 A~2-methylnaphthalene (C12.89)

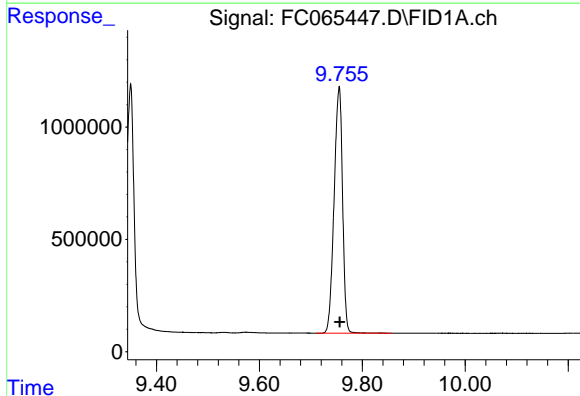
R.T.: 6.996 min
 Delta R.T.: -0.011 min
 Response: 11832436
 Conc: 60.88 ug/ml

Instrument :
 FID_C
 ClientSampleId :
 PB157779BS



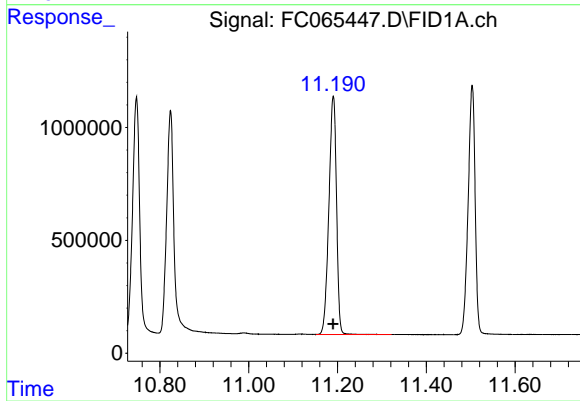
#6 n-Tetradecane (C14)

R.T.: 8.163 min
 Delta R.T.: 0.000 min
 Response: 12226860
 Conc: 61.52 ug/ml



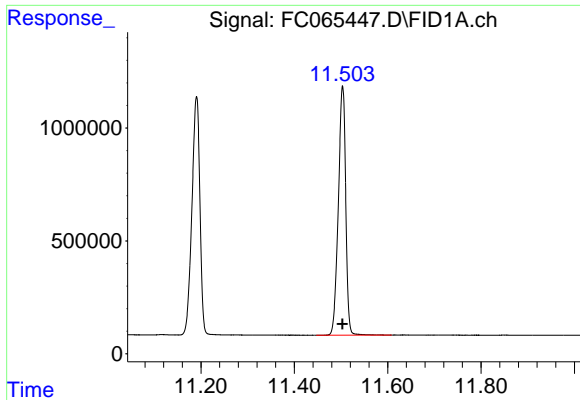
#7 n-Hexadecane (C16)

R.T.: 9.755 min
 Delta R.T.: 0.000 min
 Response: 12485707
 Conc: 63.03 ug/ml



#8 n-Octadecane (C18)

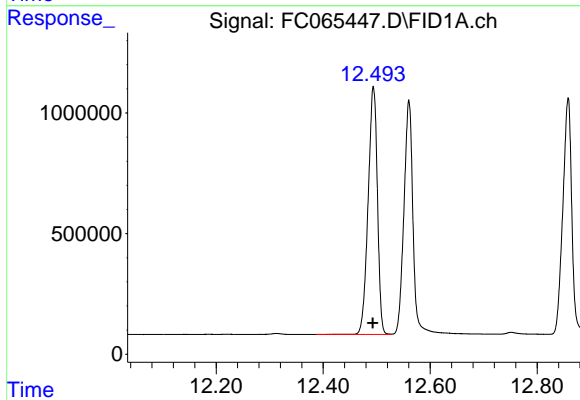
R.T.: 11.191 min
 Delta R.T.: 0.000 min
 Response: 12567403
 Conc: 63.45 ug/ml



#9 ortho-Terphenyl (SURR)

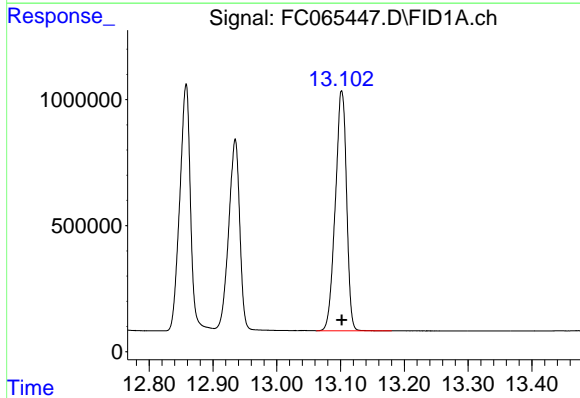
R.T.: 11.504 min
 Delta R.T.: 0.000 min
 Response: 12119102
 Conc: 52.24 ug/ml

Instrument :
 FID_C
 ClientSampleId :
 PB157779BS



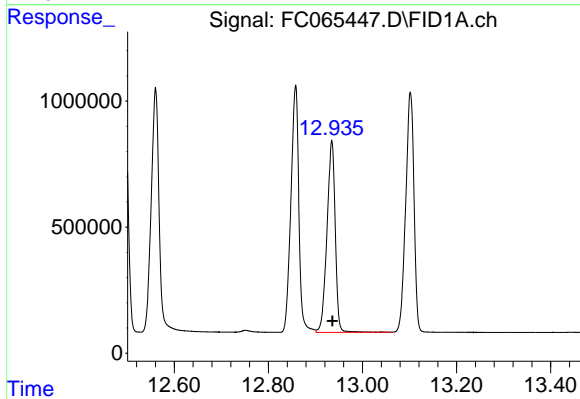
#10 n-Eicosane (C20)

R.T.: 12.494 min
 Delta R.T.: 0.001 min
 Response: 12343054
 Conc: 65.23 ug/ml



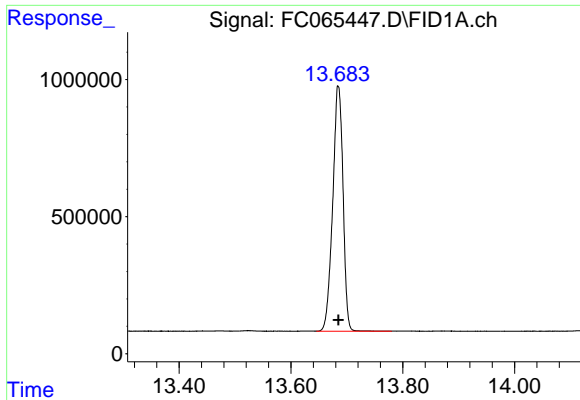
#11 n-Heneicosane (C21)

R.T.: 13.102 min
 Delta R.T.: 0.000 min
 Response: 11667522
 Conc: 63.15 ug/ml



#12 1-chlorooctadecane (SURR)

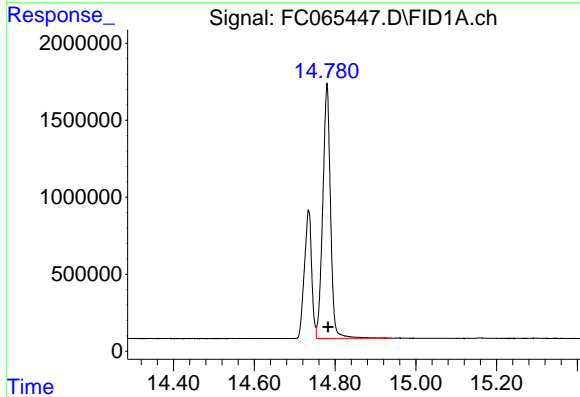
R.T.: 12.935 min
 Delta R.T.: -0.001 min
 Response: 9308949
 Conc: 56.22 ug/ml



#13 n-Docosane (C22)

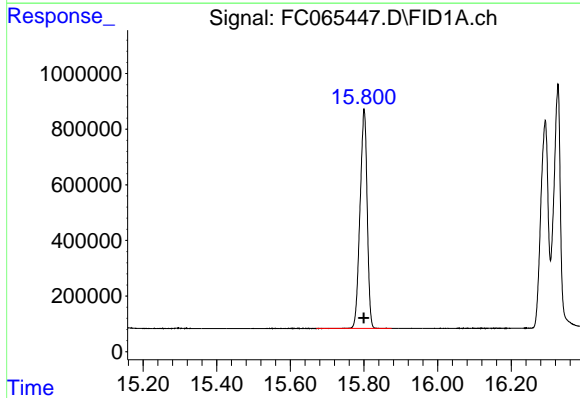
R.T.: 13.685 min
 Delta R.T.: 0.000 min
 Response: 11464578
 Conc: 63.55 ug/ml

Instrument :
 FID_C
 ClientSampleId :
 PB157779BS



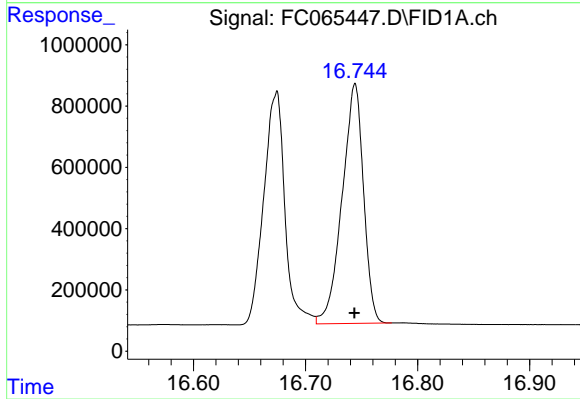
#14 n-Tetracosane (C24)

R.T.: 14.780 min
 Delta R.T.: -0.003 min
 Response: 21989848
 Conc: 126.84 ug/ml



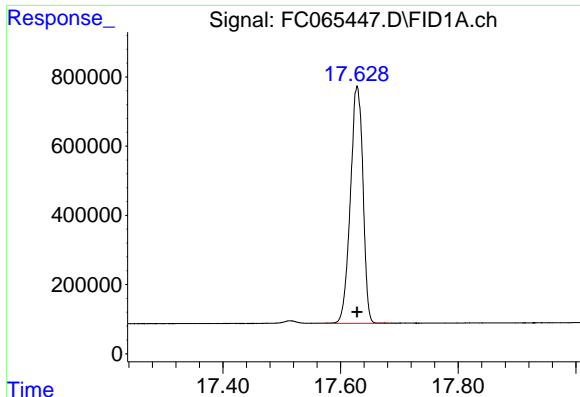
#15 n-Hexacosane (C26)

R.T.: 15.801 min
 Delta R.T.: 0.001 min
 Response: 10620768
 Conc: 63.78 ug/ml



#16 n-Octacosane (C28)

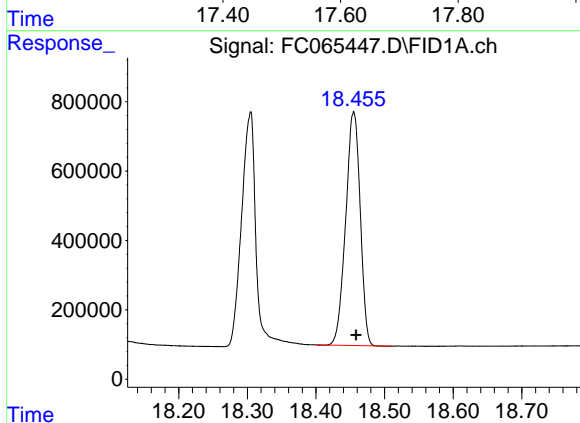
R.T.: 16.744 min
 Delta R.T.: 0.000 min
 Response: 10372978
 Conc: 64.85 ug/ml



#17 n-Tricontane (C30)

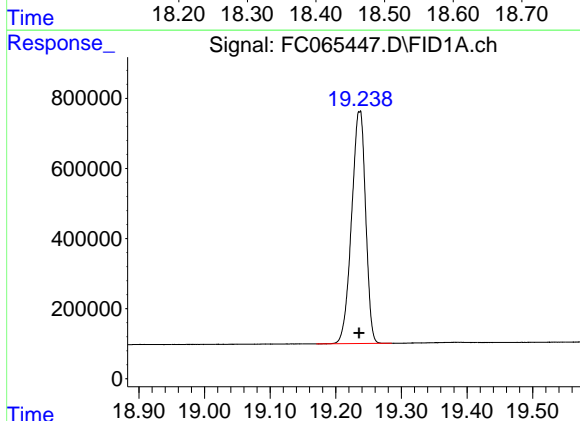
R.T.: 17.628 min
 Delta R.T.: 0.000 min
 Response: 10133845
 Conc: 63.64 ug/ml

Instrument :
 FID_C
 ClientSampleId :
 PB157779BS



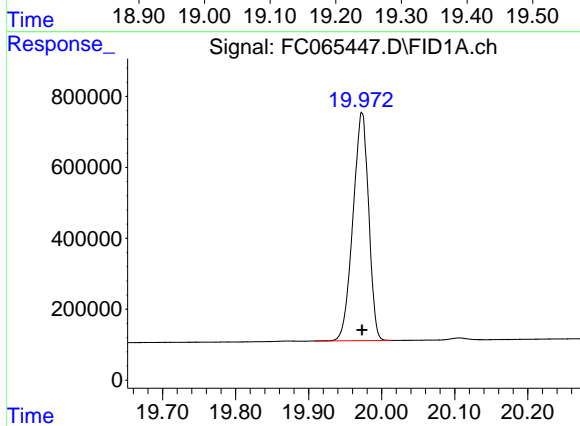
#18 n-Dotriacontane (C32)

R.T.: 18.455 min
 Delta R.T.: -0.004 min
 Response: 9919003
 Conc: 63.10 ug/ml



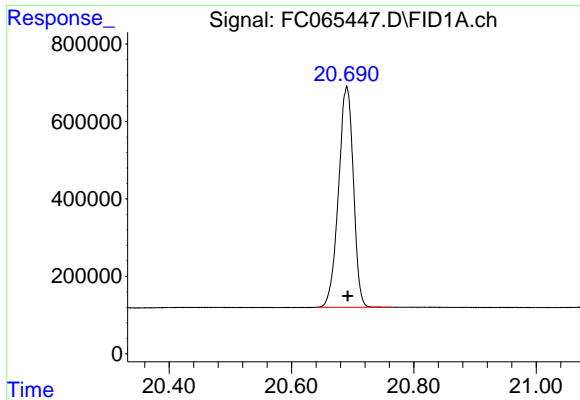
#19 n-Tetratriacontane (C34)

R.T.: 19.236 min
 Delta R.T.: 0.000 min
 Response: 9844299
 Conc: 63.79 ug/ml



#20 n-Hexatriacontane (C36)

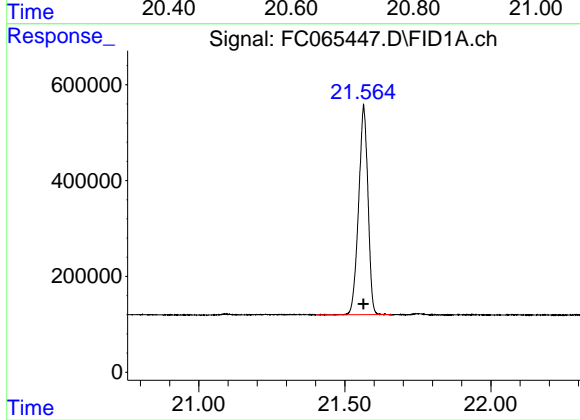
R.T.: 19.973 min
 Delta R.T.: 0.000 min
 Response: 9591404
 Conc: 62.57 ug/ml



#21 n-Octatriacontane (C38)

R.T.: 20.690 min
Delta R.T.: -0.002 min
Response: 9622767
Conc: 63.28 ug/ml

Instrument :
FID_C
ClientSampleId :
PB157779BS



#22 n-Tetracontane (C40)

R.T.: 21.564 min
Delta R.T.: 0.000 min
Response: 9674521
Conc: 64.54 ug/ml