

Data Path : Z:\pestpcbsrv\HPCHEM1\FID_C\Data\FC121423AL\
 Data File : FC065457.D
 Signal(s) : FID1A.ch
 Acq On : 14 Dec 2023 21:49
 Operator : YP/AJ
 Sample : 05805-04
 Misc :
 ALS Vial : 22 Sample Multiplier: 1

Instrument :
 FID_C
 ClientSampleId :
 HR-04-12122023

Integration File: autoint1.e
 Quant Time: Dec 14 23:33:01 2023
 Quant Method : Z:\pestpcbsrv\HPCHEM1\FID_C\Method\Aliphatic EPH 112423.M
 Quant Title : GC Extractables
 QLast Update : Fri Nov 24 13:28:29 2023
 Response via : Initial Calibration
 Integrator: ChemStation

Volume Inj. : 1 ul
 Signal Phase : Rxi-1ms
 Signal Info : 20M x 0.18mm x 0.18um

Compound	R.T.	Response	Conc Units

System Monitoring Compounds			
9) S ortho-Terphenyl (SURR)	11.506	6746206	29.078 ug/ml
Spiked Amount	50.000	Recovery	= 58.16%
12) S 1-chlorooctadecane (S...	12.945	53968818	325.927 ug/ml
Spiked Amount	50.000	Recovery	= 651.85%

Target Compounds

(f)=RT Delta > 1/2 Window

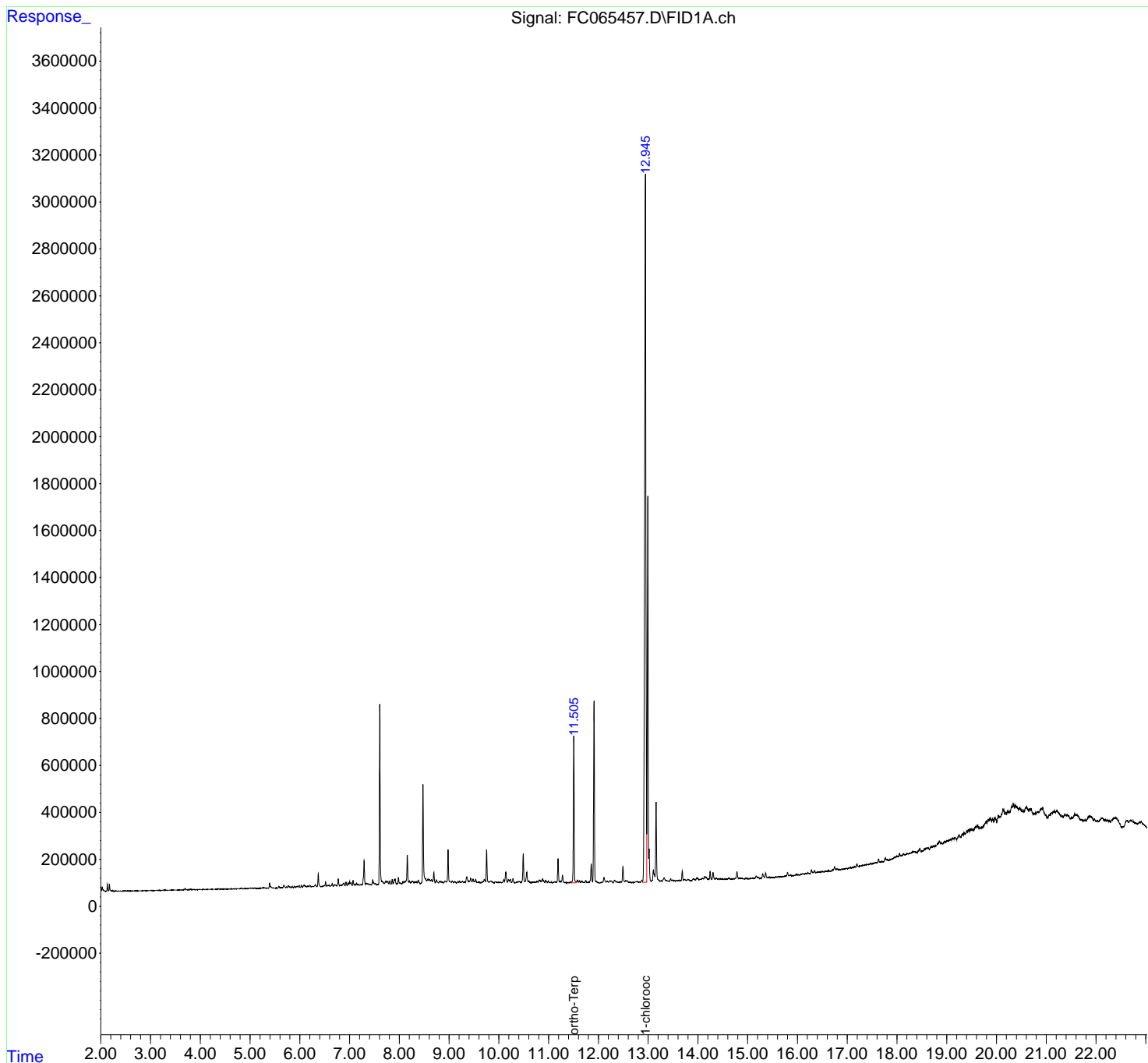
(m)=manual int.

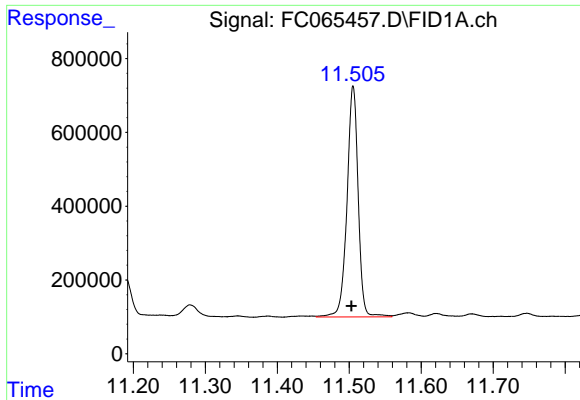
Data Path : Z:\pestpcbsrv\HPCHEM1\FID_C\Data\FC121423AL\
 Data File : FC065457.D
 Signal(s) : FID1A.ch
 Acq On : 14 Dec 2023 21:49
 Operator : YP/AJ
 Sample : 05805-04
 Misc :
 ALS Vial : 22 Sample Multiplier: 1

Instrument :
 FID_C
 ClientSampleId :
 HR-04-12122023

Integration File: autoint1.e
 Quant Time: Dec 14 23:33:01 2023
 Quant Method : Z:\pestpcbsrv\HPCHEM1\FID_C\Method\Aliphatic EPH 112423.M
 Quant Title : GC Extractables
 QLast Update : Fri Nov 24 13:28:29 2023
 Response via : Initial Calibration
 Integrator: ChemStation

Volume Inj. : 1 ul
 Signal Phase : Rxi-1ms
 Signal Info : 20M x 0.18mm x 0.18um

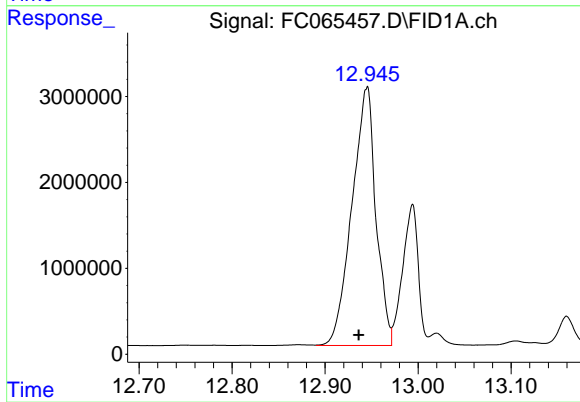




#9 ortho-Terphenyl (SURR)

R.T.: 11.506 min
Delta R.T.: 0.002 min
Response: 6746206
Conc: 29.08 ug/ml

Instrument :
FID_C
ClientSampleId :
HR-04-12122023



#12 1-chlorooctadecane (SURR)

R.T.: 12.945 min
Delta R.T.: 0.009 min
Response: 53968818
Conc: 325.93 ug/ml