

Data Path : Z:\pestpcbsrv\HPCHEM1\FID_C\Data\FC121521AL\
 Data File : FC057498.D
 Signal(s) : FID1A.CH
 Acq On : 15 Dec 2021 19:07
 Operator : AJ\MA
 Sample : M5073-04
 Misc :
 ALS Vial : 11 Sample Multiplier: 1

Instrument :
 FID_C
ClientSampleId :
 EO-03-121321

Manual Integrations
APPROVED
 Reviewed By :Yogesh Patel 12/16/2021
 Supervised By :Ankita Jodhani 12/16/2021

Integration File: sample.E
 Quant Time: Dec 16 00:47:50 2021
 Quant Method : Z:\pestpcbsrv\HPCHEM1\FID_C\Method\Aliphatic EPH 121421.M
 Quant Title : GC Extractables
 QLast Update : Tue Dec 14 20:43:13 2021
 Response via : Initial Calibration
 Integrator: ChemStation 6890 Scale Mode: Large solvent peaks clipped

Volume Inj. : 1 ul
 Signal Phase : Rxi-1ms
 Signal Info : 20M x 0.18mm x 0.18um

Compound	R.T.	Response	Conc Units

System Monitoring Compounds			
9) S ortho-Terphenyl (SURR)	10.839	3928798	28.233 ug/mlm
Spiked Amount	50.000	Recovery	= 56.47%
12) S 1-chlorooctadecane (S...	12.275	4771834	43.090 ug/mlm
Spiked Amount	50.000	Recovery	= 86.18%

Target Compounds

(f)=RT Delta > 1/2 Window

(m)=manual int.

Data Path : Z:\pestpcbsrv\HPCHEM1\FID_C\Data\FC121521AL\
 Data File : FC057498.D
 Signal(s) : FID1A.CH
 Acq On : 15 Dec 2021 19:07
 Operator : AJ\MA
 Sample : M5073-04
 Misc :
 ALS Vial : 11 Sample Multiplier: 1

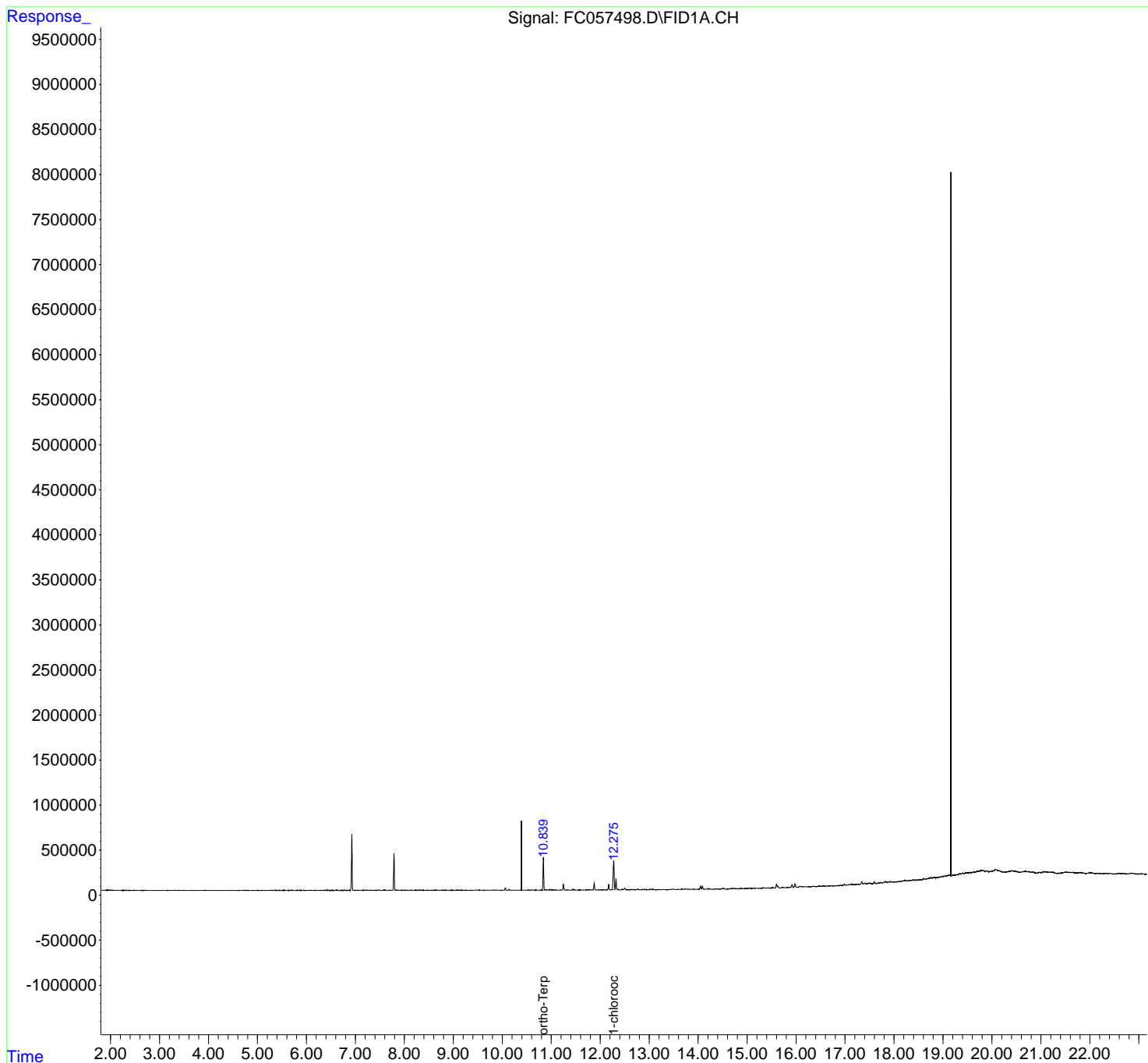
Instrument :
 FID_C
 ClientSampleId :
 EO-03-121321

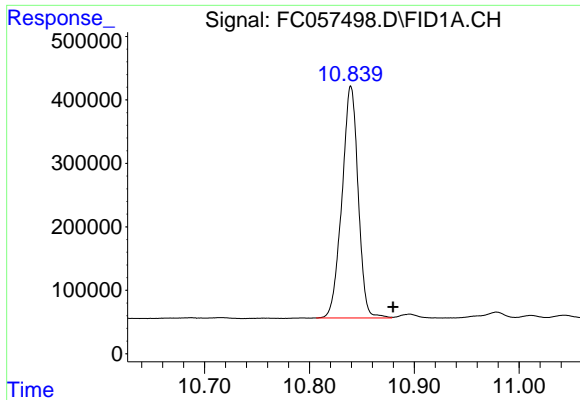
Manual Integrations
APPROVED

Reviewed By :Yogesh Patel 12/16/2021
 Supervised By :Ankita Jodhani 12/16/2021

Integration File: sample.E
 Quant Time: Dec 16 00:47:50 2021
 Quant Method : Z:\pestpcbsrv\HPCHEM1\FID_C\Method\Aliphatic EPH 121421.M
 Quant Title : GC Extractables
 QLast Update : Tue Dec 14 20:43:13 2021
 Response via : Initial Calibration
 Integrator: ChemStation 6890 Scale Mode: Large solvent peaks clipped

Volume Inj. : 1 ul
 Signal Phase : Rxi-1ms
 Signal Info : 20M x 0.18mm x 0.18um





#9 ortho-Terphenyl (SURR)

R.T.: 10.839 min
 Delta R.T.: -0.041 min
 Response: 3928798
 Conc: 28.23 ug/ml

Instrument :

FID_C

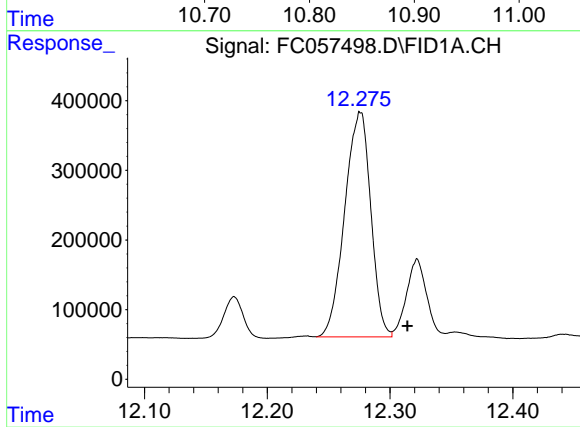
ClientSampleId :

EO-03-121321

Manual Integrations

APPROVED

Reviewed By :Yogesh Patel 12/16/2021
 Supervised By :Ankita Jodhani 12/16/2021



#12 1-chlorooctadecane (SURR)

R.T.: 12.275 min
 Delta R.T.: -0.040 min
 Response: 4771834
 Conc: 43.09 ug/ml m