

Data Path : Z:\pestpcbsrv\HPCHEM1\FID_C\Data\FC121523AL\
 Data File : FC065472.D
 Signal(s) : FID1A.ch
 Acq On : 15 Dec 2023 10:13
 Operator : YP/AJ
 Sample : MECL2
 Misc :
 ALS Vial : 1 Sample Multiplier: 1

Instrument :
 FID_C
 ClientSampleId :
 MECL2

Integration File: autoint1.e
 Quant Time: Dec 15 12:45:56 2023
 Quant Method : Z:\pestpcbsrv\HPCHEM1\FID_C\Method\Aliphatic EPH 112423.M
 Quant Title : GC Extractables
 QLast Update : Fri Nov 24 13:28:29 2023
 Response via : Initial Calibration
 Integrator: ChemStation

Volume Inj. : 1 ul
 Signal Phase : Rxi-1ms
 Signal Info : 20M x 0.18mm x 0.18um

Compound	R.T.	Response	Conc Units
----------	------	----------	------------

 System Monitoring Compounds

Target Compounds

(f)=RT Delta > 1/2 Window

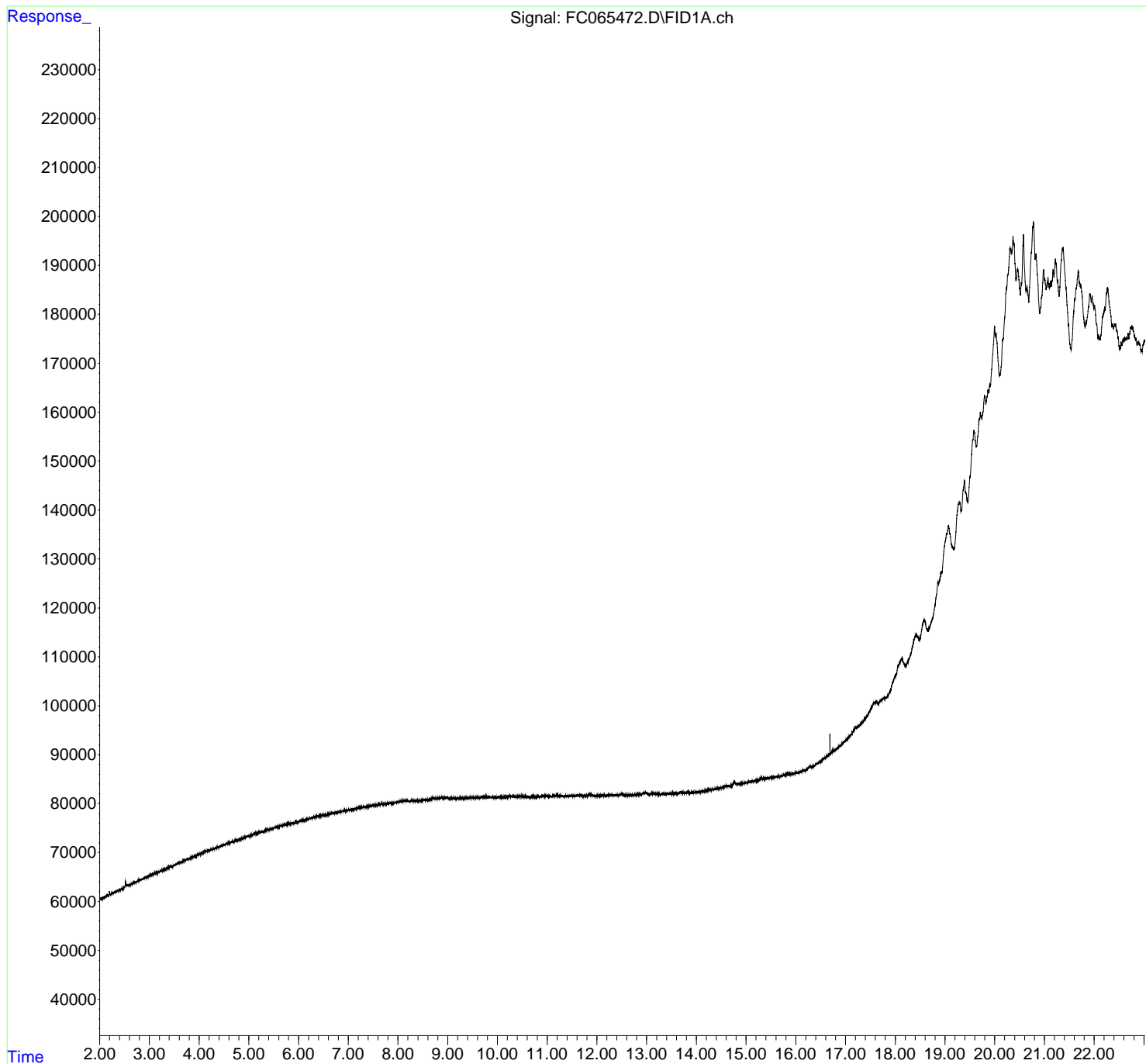
(m)=manual int.

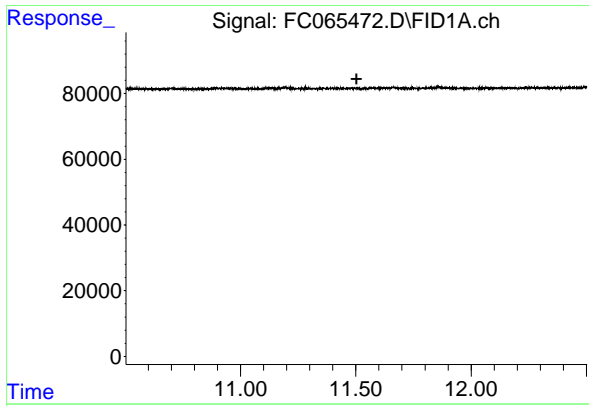
Data Path : Z:\pestpcbsrv\HPCHEM1\FID_C\Data\FC121523AL\
 Data File : FC065472.D
 Signal(s) : FID1A.ch
 Acq On : 15 Dec 2023 10:13
 Operator : YP/AJ
 Sample : MECL2
 Misc :
 ALS Vial : 1 Sample Multiplier: 1

Instrument :
 FID_C
ClientSampleId :
 MECL2

Integration File: autoint1.e
 Quant Time: Dec 15 12:45:56 2023
 Quant Method : Z:\pestpcbsrv\HPCHEM1\FID_C\Method\Aliphatic EPH 112423.M
 Quant Title : GC Extractables
 QLast Update : Fri Nov 24 13:28:29 2023
 Response via : Initial Calibration
 Integrator: ChemStation

Volume Inj. : 1 ul
 Signal Phase : Rxi-1ms
 Signal Info : 20M x 0.18mm x 0.18um

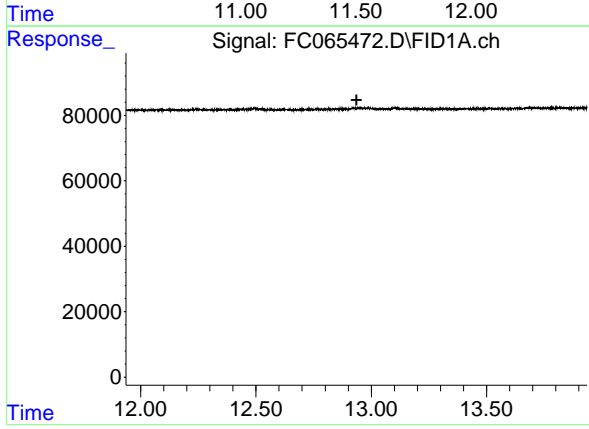




#9 ortho-Terphenyl (SURR)

R.T.: 0.000 min
Exp R.T. : 11.503 min
Response: 0
Conc: N.D.

Instrument :
FID_C
ClientSampleId :
MECL2



#12 1-chlorooctadecane (SURR)

R.T.: 0.000 min
Exp R.T. : 12.936 min
Response: 0
Conc: N.D.