

Data Path : Z:\pestpcbsrv\HPCHEM1\FID\_C\Data\FC121523AL\  
 Data File : FC065475.D  
 Signal(s) : FID1A.ch  
 Acq On : 15 Dec 2023 12:09  
 Operator : YP/AJ  
 Sample : 05791-11  
 Misc :  
 ALS Vial : 11 Sample Multiplier: 1

**Instrument :**  
 FID\_C  
**ClientSampleId :**  
 MW-1B-EE-NN

Integration File: autoint1.e  
 Quant Time: Dec 15 12:47:02 2023  
 Quant Method : Z:\pestpcbsrv\HPCHEM1\FID\_C\Method\Aliphatic EPH 112423.M  
 Quant Title : GC Extractables  
 QLast Update : Fri Nov 24 13:28:29 2023  
 Response via : Initial Calibration  
 Integrator: ChemStation

Volume Inj. : 1 ul  
 Signal Phase : Rxi-1ms  
 Signal Info : 20M x 0.18mm x 0.18um

Compound	R.T.	Response	Conc Units
-----			
System Monitoring Compounds			
12) S 1-chlorooctadecane (S...	12.939	10917634	65.933 ug/ml
Spiked Amount	50.000	Recovery	= 131.87%

Target Compounds

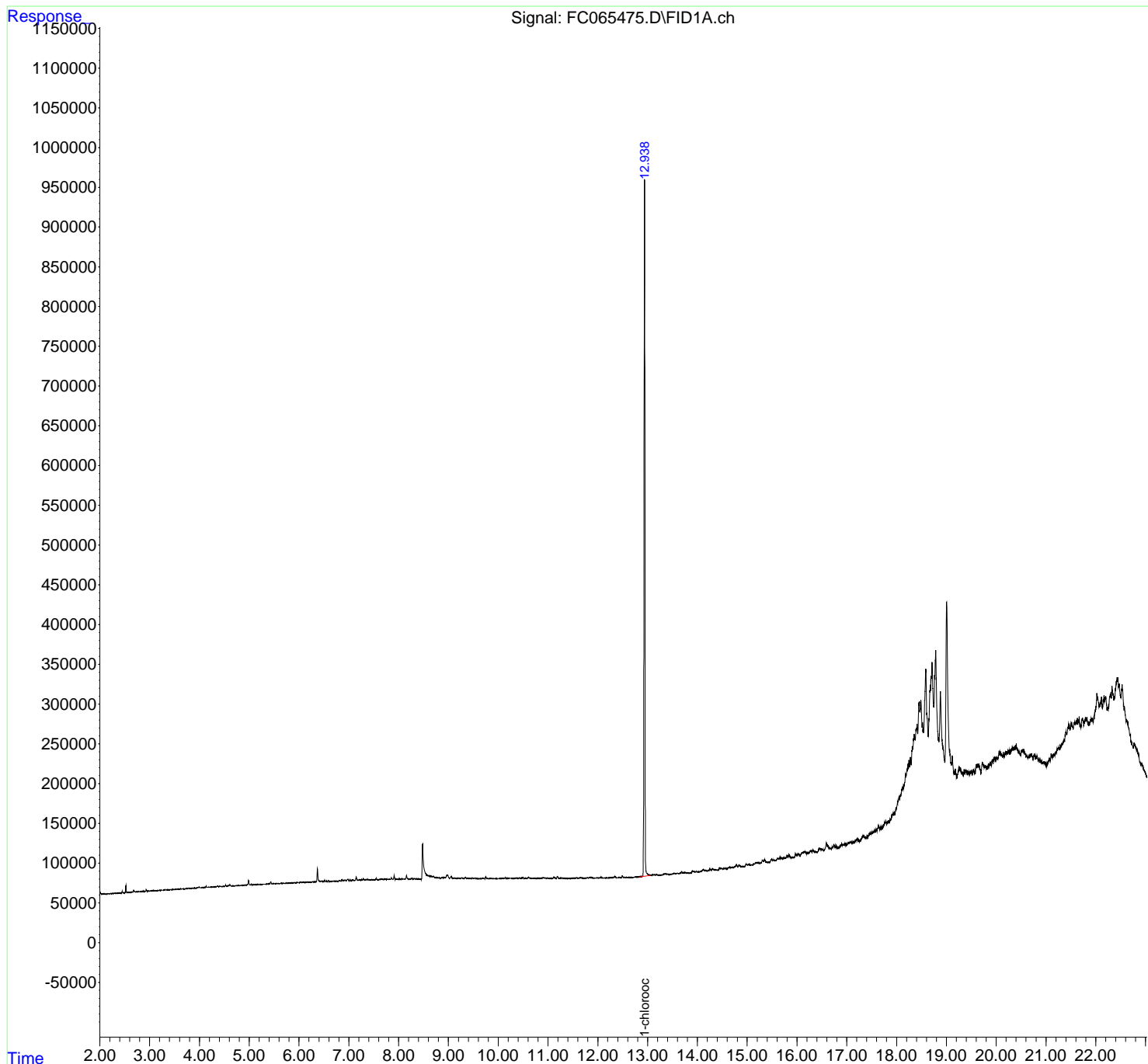
(f)=RT Delta > 1/2 Window (m)=manual int.

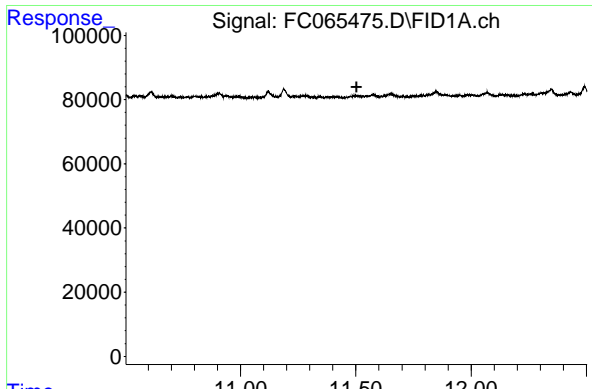
Data Path : Z:\pestpcbsrv\HPCHEM1\FID\_C\Data\FC121523AL\  
Data File : FC065475.D  
Signal(s) : FID1A.ch  
Acq On : 15 Dec 2023 12:09  
Operator : YP/AJ  
Sample : 05791-11  
Misc :  
ALS Vial : 11 Sample Multiplier: 1

Instrument :  
FID\_C  
ClientSampleId :  
MW-1B-EE-NN

Integration File: autoint1.e  
Quant Time: Dec 15 12:47:02 2023  
Quant Method : Z:\pestpcbsrv\HPCHEM1\FID\_C\Method\Aliphatic EPH 112423.M  
Quant Title : GC Extractables  
QLast Update : Fri Nov 24 13:28:29 2023  
Response via : Initial Calibration  
Integrator: ChemStation

Volume Inj. : 1 ul  
Signal Phase : Rxi-1ms  
Signal Info : 20M x 0.18mm x 0.18um

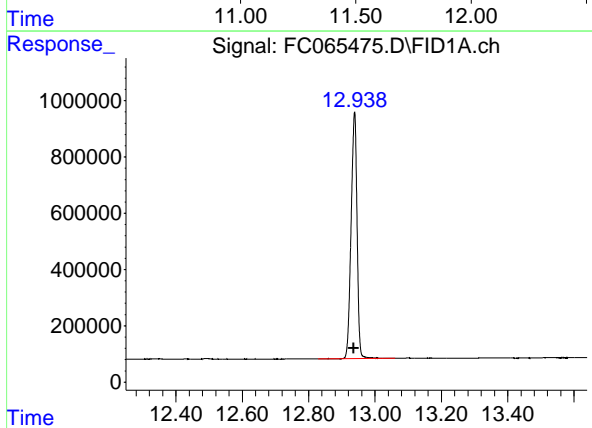




#9 ortho-Terphenyl (SURRE)

R.T.: 0.000 min  
 Exp R.T.: 11.503 min  
 Response: 0  
 Conc: N.D.

Instrument :  
 FID\_C  
 ClientSampleId :  
 MW-1B-EE-NN



#12 1-chlorooctadecane (SURRE)

R.T.: 12.939 min  
 Delta R.T.: 0.003 min  
 Response: 10917634  
 Conc: 65.93 ug/ml