

Data Path : Z:\pestpcbsrv\HPCHEM1\FID\_C\Data\FC121523AL\  
Data File : FC065488.D  
Signal(s) : FID1A.ch  
Acq On : 15 Dec 2023 22:01  
Operator : YP/AJ  
Sample : I.BLK  
Misc :  
ALS Vial : 1 Sample Multiplier: 1

Instrument :  
FID\_C  
ClientSampleId :  
I.BLK

Integration File: autoint1.e  
Quant Time: Dec 16 02:38:21 2023  
Quant Method : Z:\pestpcbsrv\HPCHEM1\FID\_C\Method\Aliphatic EPH 112423.M  
Quant Title : GC Extractables  
QLast Update : Fri Nov 24 13:28:29 2023  
Response via : Initial Calibration  
Integrator: ChemStation

Volume Inj. : 1 u1  
Signal Phase : Rxi-1ms  
Signal Info : 20M x 0.18mm x 0.18um

Compound	R.T.	Response	Conc Units
----------	------	----------	------------

-----  
System Monitoring Compounds

Target Compounds  
-----

(f)=RT Delta > 1/2 Window

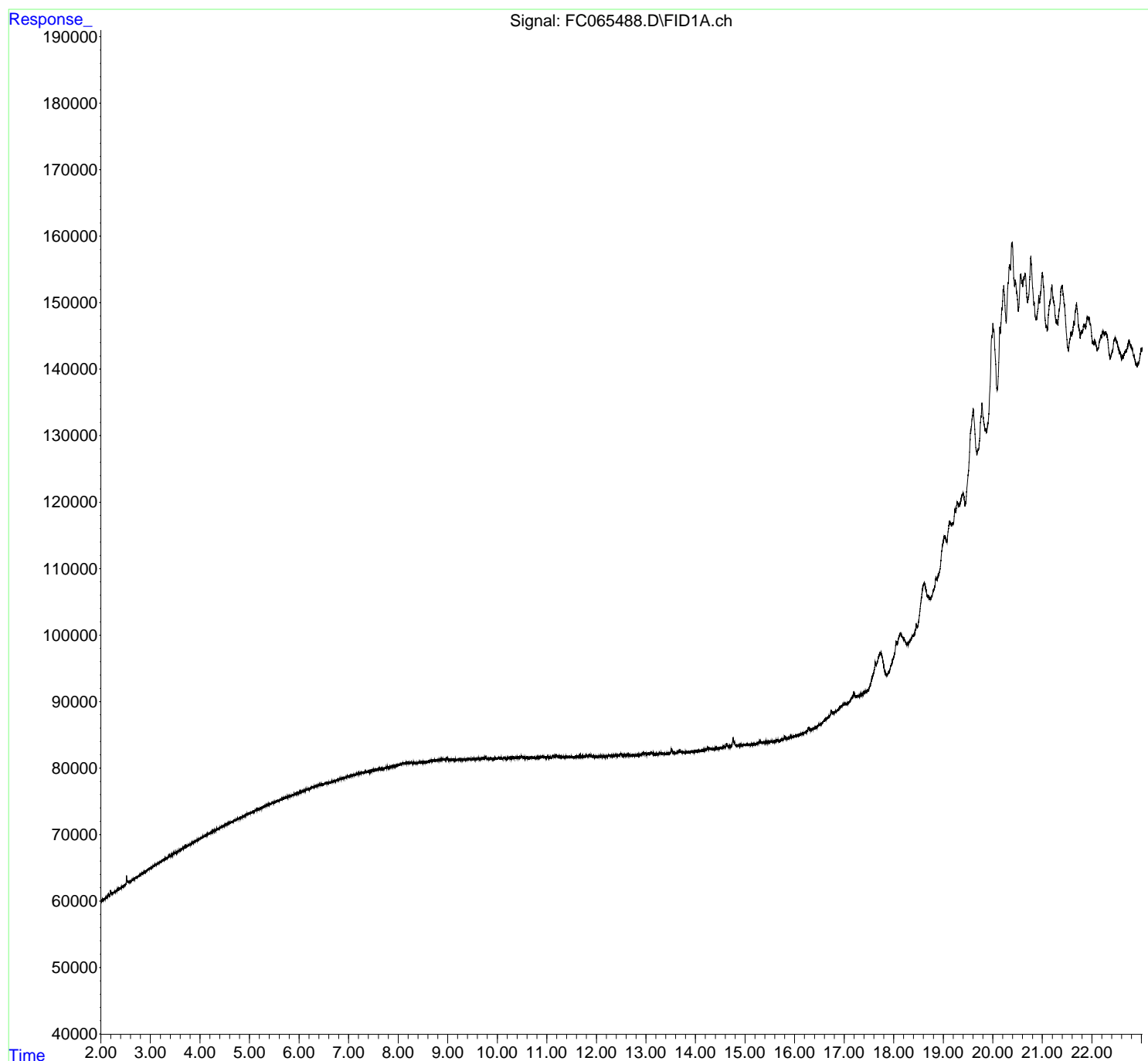
(m)=manual int.

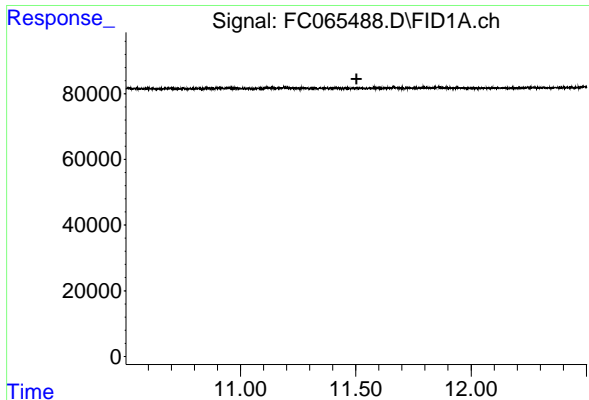
Data Path : Z:\pestpcbsrv\HPCHEM1\FID\_C\Data\FC121523AL\  
Data File : FC065488.D  
Signal(s) : FID1A.ch  
Acq On : 15 Dec 2023 22:01  
Operator : YP/AJ  
Sample : I.BLK  
Misc :  
ALS Vial : 1 Sample Multiplier: 1

Instrument :  
FID\_C  
ClientSampleId :  
I.BLK

Integration File: autoint1.e  
Quant Time: Dec 16 02:38:21 2023  
Quant Method : Z:\pestpcbsrv\HPCHEM1\FID\_C\Method\Aliphatic EPH 112423.M  
Quant Title : GC Extractables  
QLast Update : Fri Nov 24 13:28:29 2023  
Response via : Initial Calibration  
Integrator: ChemStation

Volume Inj. : 1 ul  
Signal Phase : Rxi-1ms  
Signal Info : 20M x 0.18mm x 0.18um

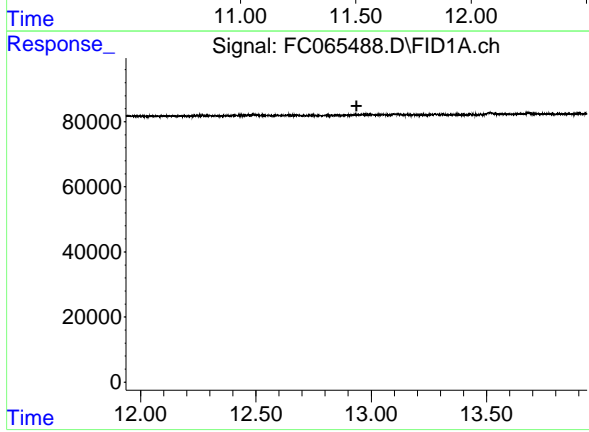




#9 ortho-Terphenyl (SURR)

R.T.: 0.000 min  
Exp R.T. : 11.503 min  
Response: 0  
Conc: N.D.

Instrument :  
FID\_C  
ClientSampleId :  
I.BLK



#12 1-chlorooctadecane (SURR)

R.T.: 0.000 min  
Exp R.T. : 12.936 min  
Response: 0  
Conc: N.D.