

Data Path : Z:\pestpcbsrv\HPCHEM1\FID_C\Data\F121621AL\
 Data File : FC057542.D
 Signal(s) : FID1A.CH
 Acq On : 16 Dec 2021 22:22
 Operator : AJ\MA
 Sample : M5044-13
 Misc :
 ALS Vial : 22 Sample Multiplier: 1

Instrument :
 FID_C
 ClientSampleId :

Integration File: sample.E
 Quant Time: Dec 17 01:32:37 2021
 Quant Method : Z:\pestpcbsrv\HPCHEM1\FID_C\Method\Aliphatic EPH 121421.M
 Quant Title : GC Extractables
 QLast Update : Tue Dec 14 20:43:13 2021
 Response via : Initial Calibration
 Integrator: ChemStation 6890 Scale Mode: Large solvent peaks clipped

Volume Inj. : 1 ul
 Signal Phase : Rxi-1ms
 Signal Info : 20M x 0.18mm x 0.18um

| Compound | R.T. | Response | Conc Units |
|--------------------------------|--------|----------|--------------|
| ----- | | | |
| System Monitoring Compounds | | | |
| 9) S ortho-Terphenyl (SURR) | 10.821 | 5039912 | 36.218 ug/ml |
| Spiked Amount | 50.000 | Recovery | = 72.44% |
| 12) S 1-chlorooctadecane (S... | 12.258 | 3904178 | 35.255 ug/ml |
| Spiked Amount | 50.000 | Recovery | = 70.51% |
| Target Compounds | | | |
| 1) T n-Nonane (C9) | 2.713 | 331915 | 2.687 ug/ml |
| 2) T n-Decane (C10) | 3.692 | 2018248 | 16.204 ug/ml |
| 3) T A~Naphthalene (C11.7) | 5.279 | 2661829 | 19.187 ug/ml |
| 4) T n-Dodecane (C12) | 5.677 | 2230251 | 18.060 ug/ml |
| 5) T A~2-methylnaphthalene... | 6.335 | 745056 | 5.328 ug/ml |
| 6) T n-Tetradecane (C14) | 7.506 | 163937 | 1.324 ug/ml |
| 7) T n-Hexadecane (C16) | 9.062 | 794984 | 6.340 ug/ml |
| 8) T n-Octadecane (C18) | 10.505 | 481868 | 3.723 ug/ml |
| 10) T n-Eicosane (C20) | 11.854 | 143058 | 1.101 ug/ml |
| 11) T n-Heneicosane (C21) | 12.424 | 205584 | 1.566 ug/ml |
| 13) T n-Docosane (C22) | 13.056 | 31875 | 0.243 ug/ml |
| 14) T n-Tetracosane (C24) | 14.158 | 39701 | 0.299 ug/ml |
| 15) T n-Hexacosane (C26) | 15.177 | 15547 | 0.119 ug/ml |
| 16) T n-Octacosane (C28) | 16.129 | 51879 | 0.395 ug/ml |
| 17) T n-Tricontane (C30) | 17.006 | 88919 | 0.651 ug/ml |
| 18) T n-Dotriacontane (C32) | 17.799 | 570504 | 4.255 ug/ml |
| 19) T n-Tetratriacontane (C34) | 18.585 | 1331238 | 10.209 ug/ml |
| 20) T n-Hexatriacontane (C36) | 19.326 | 3429756 | 28.885 ug/ml |
| 21) T n-Octatriacontane (C38) | 20.050 | 9959650 | 90.682 ug/ml |
| 22) T n-Tetracontane (C40) | 21.008 | 3632134 | 36.378 ug/ml |

(f)=RT Delta > 1/2 Window

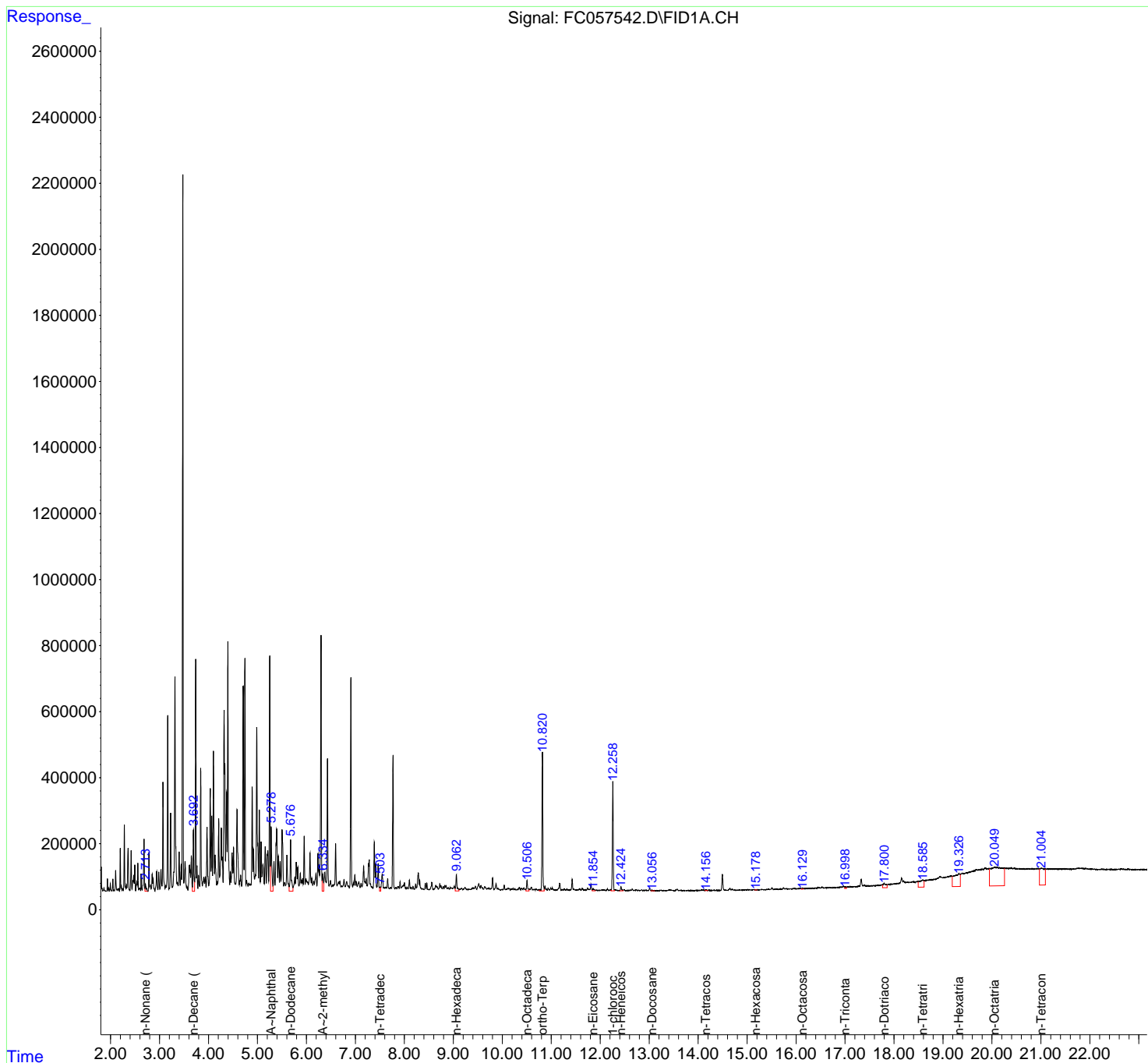
(m)=manual int.

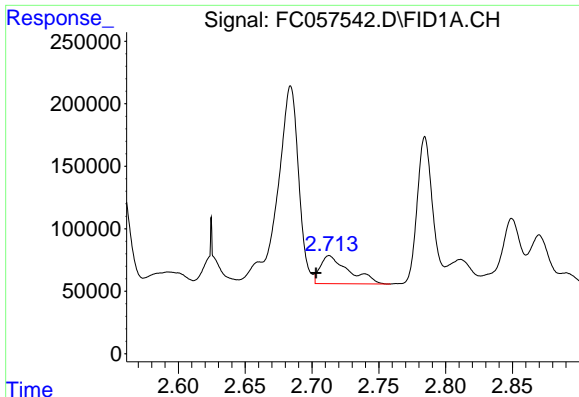
Data Path : Z:\pestpcbsrv\HPCHEM1\FID_C\Data\FC121621AL\
 Data File : FC057542.D
 Signal(s) : FID1A.CH
 Acq On : 16 Dec 2021 22:22
 Operator : AJ\MA
 Sample : M5044-13
 Misc :
 ALS Vial : 22 Sample Multiplier: 1

Instrument :
 FID_C
 ClientSampleId :

Integration File: sample.E
 Quant Time: Dec 17 01:32:37 2021
 Quant Method : Z:\pestpcbsrv\HPCHEM1\FID_C\Method\Aliphatic EPH 121421.M
 Quant Title : GC Extractables
 QLast Update : Tue Dec 14 20:43:13 2021
 Response via : Initial Calibration
 Integrator: ChemStation 6890 Scale Mode: Large solvent peaks clipped

Volume Inj. : 1 ul
 Signal Phase : Rxi-1ms
 Signal Info : 20M x 0.18mm x 0.18um

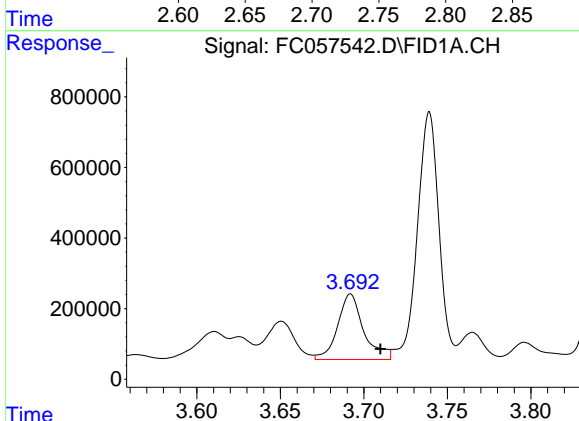




#1 n-Nonane (C9)

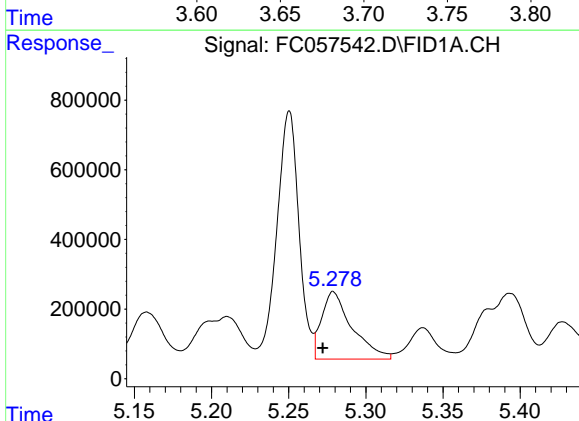
R.T.: 2.713 min
Delta R.T.: 0.010 min
Response: 331915
Conc: 2.69 ug/ml

Instrument :
FID_C
ClientSampleId :



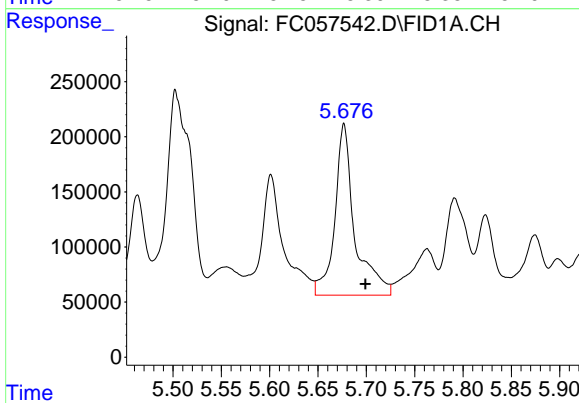
#2 n-Decane (C10)

R.T.: 3.692 min
Delta R.T.: -0.018 min
Response: 2018248
Conc: 16.20 ug/ml



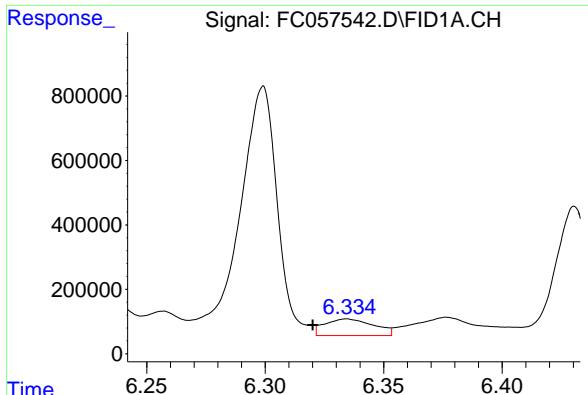
#3 A~Naphthalene (C11.7)

R.T.: 5.279 min
Delta R.T.: 0.007 min
Response: 2661829
Conc: 19.19 ug/ml



#4 n-Dodecane (C12)

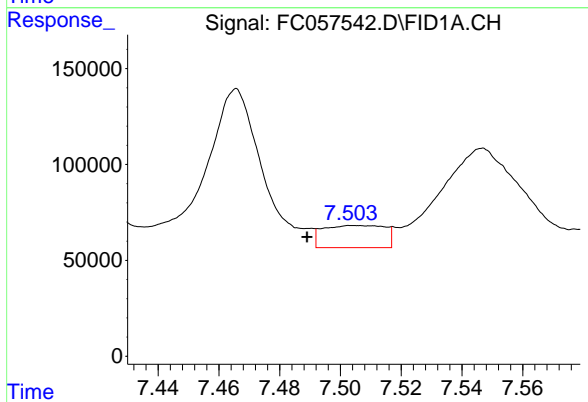
R.T.: 5.677 min
Delta R.T.: -0.022 min
Response: 2230251
Conc: 18.06 ug/ml



#5 A~2-methylnaphthalene (C12.89)

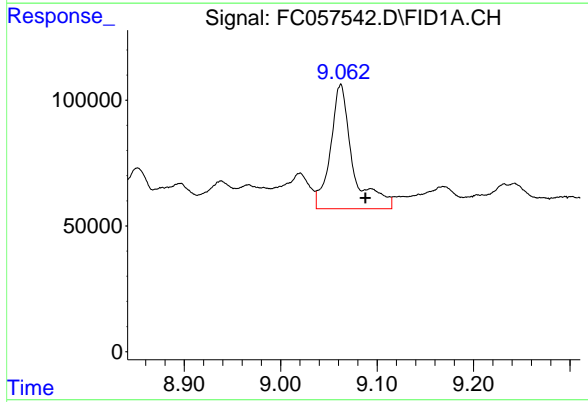
R.T.: 6.335 min
 Delta R.T.: 0.015 min
 Response: 745056
 Conc: 5.33 ug/ml

Instrument :
 FID_C
 ClientSampleId :



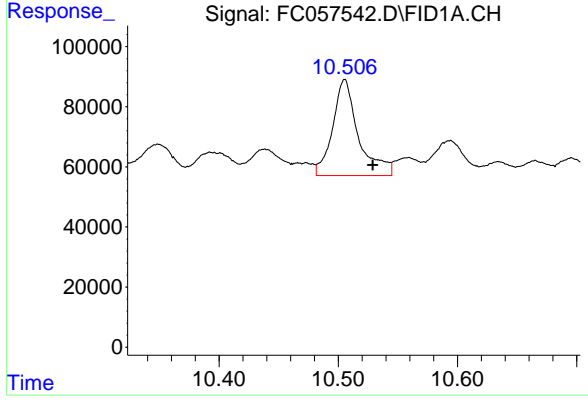
#6 n-Tetradecane (C14)

R.T.: 7.506 min
 Delta R.T.: 0.017 min
 Response: 163937
 Conc: 1.32 ug/ml



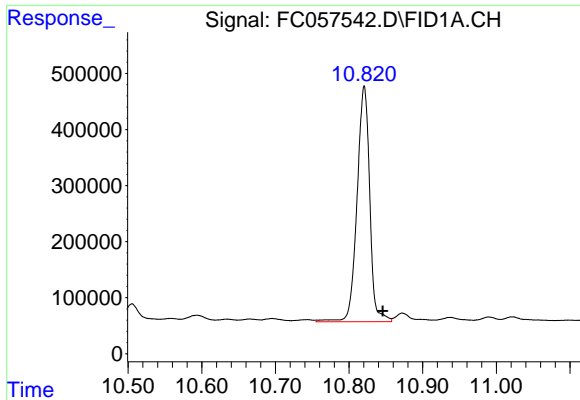
#7 n-Hexadecane (C16)

R.T.: 9.062 min
 Delta R.T.: -0.026 min
 Response: 794984
 Conc: 6.34 ug/ml



#8 n-Octadecane (C18)

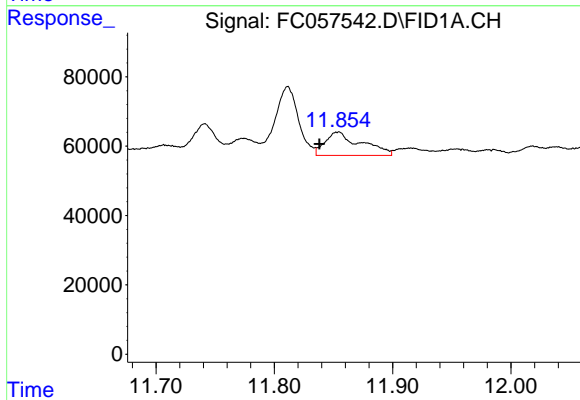
R.T.: 10.505 min
 Delta R.T.: -0.024 min
 Response: 481868
 Conc: 3.72 ug/ml



#9 ortho-Terphenyl (SURR)

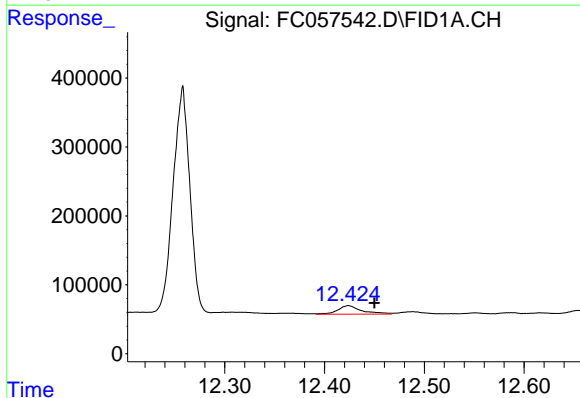
R.T.: 10.821 min
 Delta R.T.: -0.025 min
 Response: 5039912
 Conc: 36.22 ug/ml

Instrument :
 FID_C
 ClientSampleId :



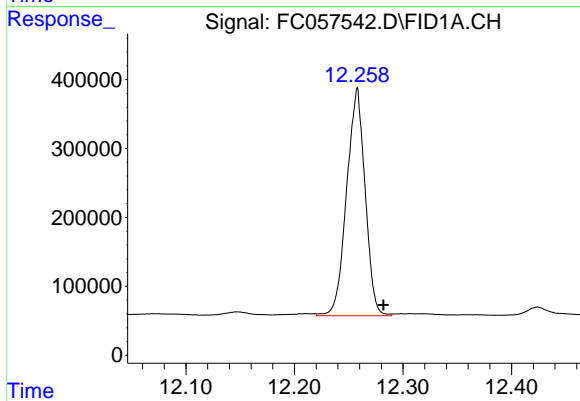
#10 n-Eicosane (C20)

R.T.: 11.854 min
 Delta R.T.: 0.016 min
 Response: 143058
 Conc: 1.10 ug/ml



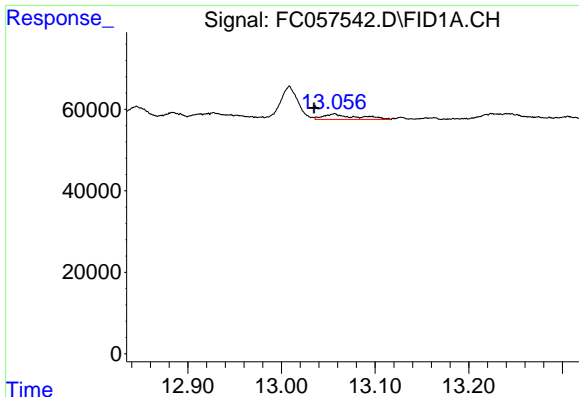
#11 n-Heneicosane (C21)

R.T.: 12.424 min
 Delta R.T.: -0.026 min
 Response: 205584
 Conc: 1.57 ug/ml



#12 1-chlorooctadecane (SURR)

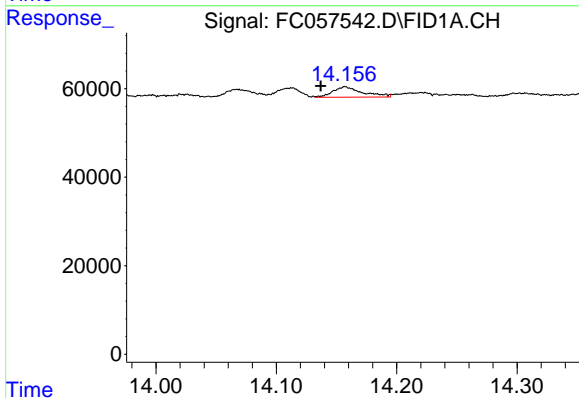
R.T.: 12.258 min
 Delta R.T.: -0.024 min
 Response: 3904178
 Conc: 35.26 ug/ml



#13 n-Docosane (C22)

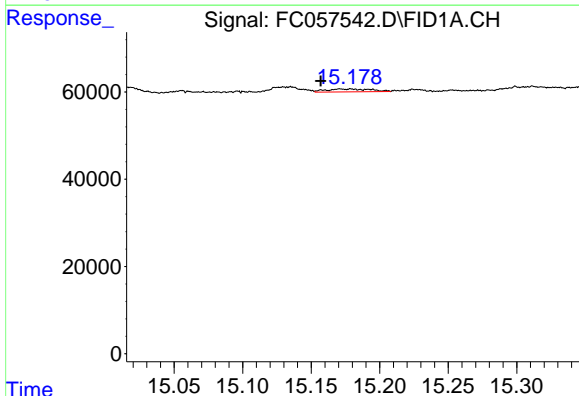
R.T.: 13.056 min
Delta R.T.: 0.021 min
Response: 31875
Conc: 0.24 ug/ml

Instrument :
FID_C
ClientSampleId :



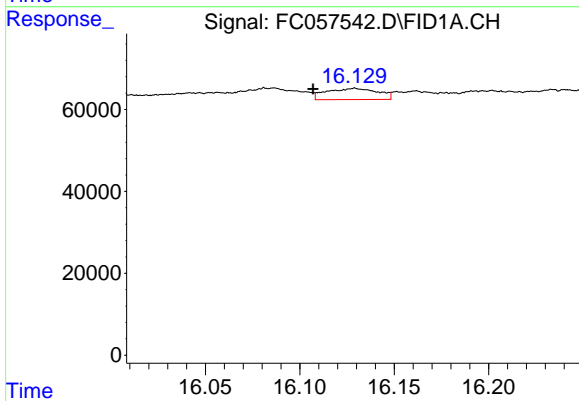
#14 n-Tetracosane (C24)

R.T.: 14.158 min
Delta R.T.: 0.021 min
Response: 39701
Conc: 0.30 ug/ml



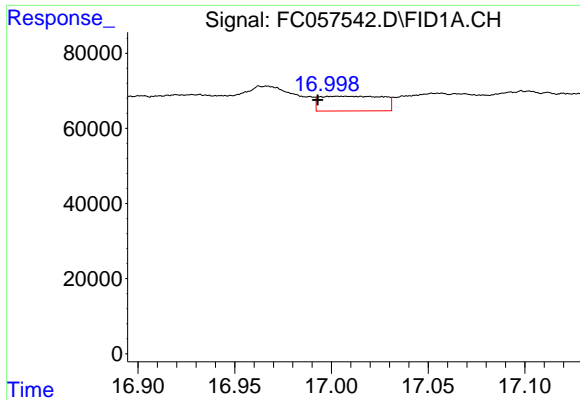
#15 n-Hexacosane (C26)

R.T.: 15.177 min
Delta R.T.: 0.020 min
Response: 15547
Conc: 0.12 ug/ml



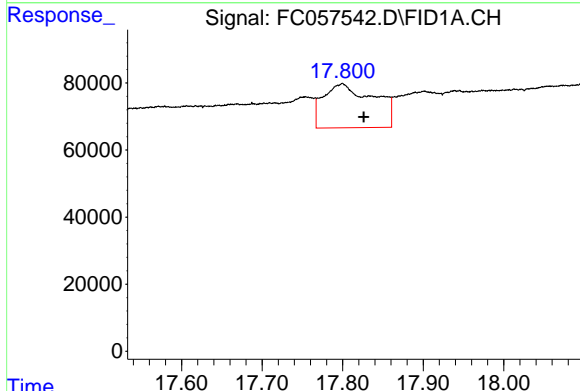
#16 n-Octacosane (C28)

R.T.: 16.129 min
Delta R.T.: 0.022 min
Response: 51879
Conc: 0.39 ug/ml

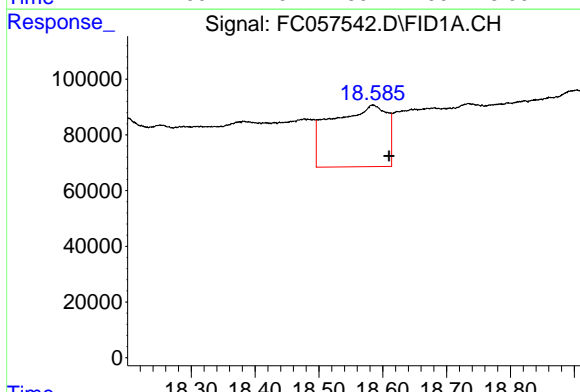


#17 n-Tricontane (C30)
 R.T.: 17.006 min
 Delta R.T.: 0.013 min
 Response: 88919
 Conc: 0.65 ug/ml

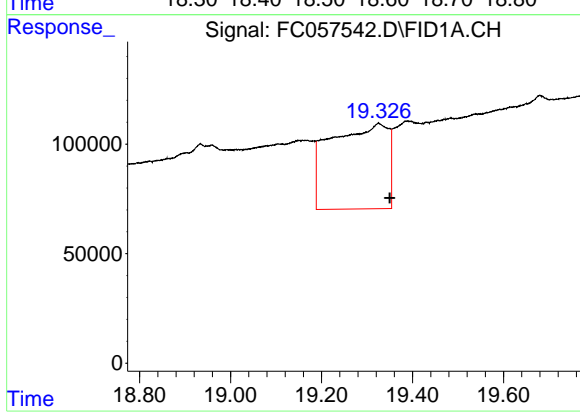
Instrument :
 FID_C
 ClientSampleId :



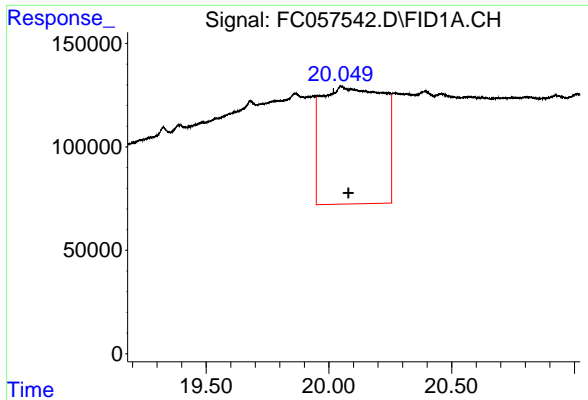
#18 n-Dotriacontane (C32)
 R.T.: 17.799 min
 Delta R.T.: -0.027 min
 Response: 570504
 Conc: 4.25 ug/ml



#19 n-Tetratriacontane (C34)
 R.T.: 18.585 min
 Delta R.T.: -0.025 min
 Response: 1331238
 Conc: 10.21 ug/ml



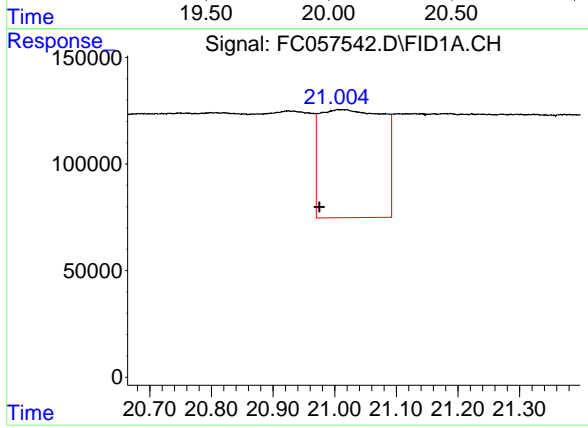
#20 n-Hexatriacontane (C36)
 R.T.: 19.326 min
 Delta R.T.: -0.024 min
 Response: 3429756
 Conc: 28.88 ug/ml



#21 n-Octatriacontane (C38)

R.T.: 20.050 min
 Delta R.T.: -0.029 min
 Response: 9959650
 Conc: 90.68 ug/ml

Instrument :
 FID_C
 ClientSampleId :



#22 n-Tetracontane (C40)

R.T.: 21.008 min
 Delta R.T.: 0.033 min
 Response: 3632134
 Conc: 36.38 ug/ml