

Data Path : Z:\pestpcbsrv\HPCHEM1\FID\_C\Data\FC121721AL\  
 Data File : FC057600.D  
 Signal(s) : FID1A.CH  
 Acq On : 18 Dec 2021 7:16  
 Operator : AJ\MA  
 Sample : I.BLK  
 Misc :  
 ALS Vial : 1 Sample Multiplier: 1

Instrument :  
 FID\_C  
 ClientSampleId :  
 I.BLK

Integration File: sample.E  
 Quant Time: Dec 20 00:37:20 2021  
 Quant Method : Z:\pestpcbsrv\HPCHEM1\FID\_C\Method\Aliphatic EPH 121421.M  
 Quant Title : GC Extractables  
 QLast Update : Tue Dec 14 20:43:13 2021  
 Response via : Initial Calibration  
 Integrator: ChemStation 6890 Scale Mode: Large solvent peaks clipped

Volume Inj. : 1 ul  
 Signal Phase : Rxi-1ms  
 Signal Info : 20M x 0.18mm x 0.18um

| Compound | R.T. | Response | Conc Units |
|----------|------|----------|------------|
|----------|------|----------|------------|

-----  
 System Monitoring Compounds

Target Compounds  
 -----

(f)=RT Delta > 1/2 Window

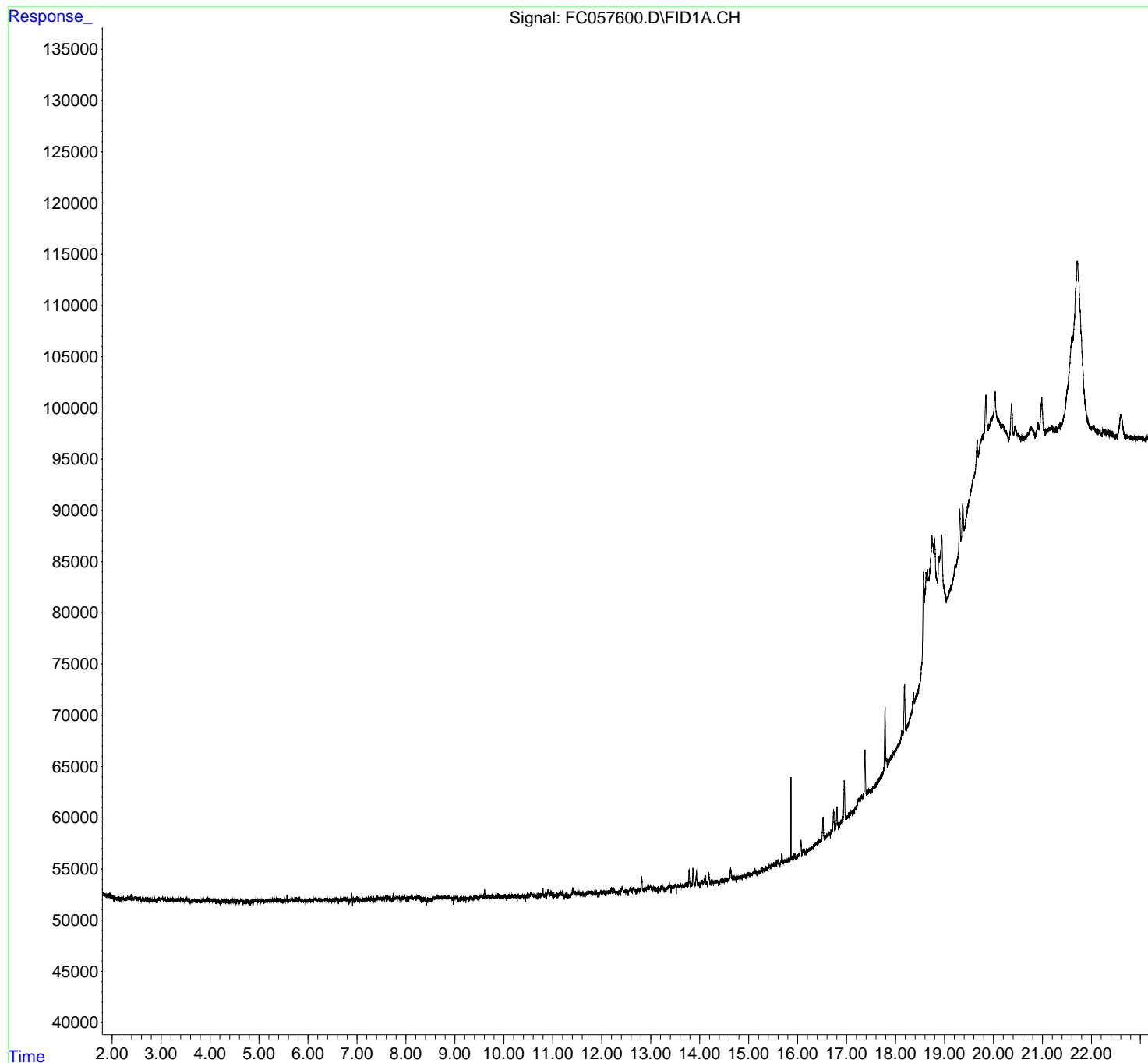
(m)=manual int.

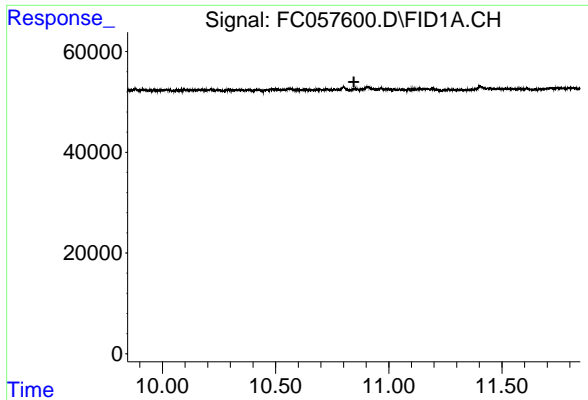
Data Path : Z:\pestpcbsrv\HPCHEM1\FID\_C\Data\FC121721AL\  
Data File : FC057600.D  
Signal(s) : FID1A.CH  
Acq On : 18 Dec 2021 7:16  
Operator : AJ\MA  
Sample : I.BLK  
Misc :  
ALS Vial : 1 Sample Multiplier: 1

Instrument :  
FID\_C  
ClientSampleId :  
I.BLK

Integration File: sample.E  
Quant Time: Dec 20 00:37:20 2021  
Quant Method : Z:\pestpcbsrv\HPCHEM1\FID\_C\Method\Aliphatic EPH 121421.M  
Quant Title : GC Extractables  
QLast Update : Tue Dec 14 20:43:13 2021  
Response via : Initial Calibration  
Integrator: ChemStation 6890 Scale Mode: Large solvent peaks clipped

Volume Inj. : 1 ul  
Signal Phase : Rxi-1ms  
Signal Info : 20M x 0.18mm x 0.18um

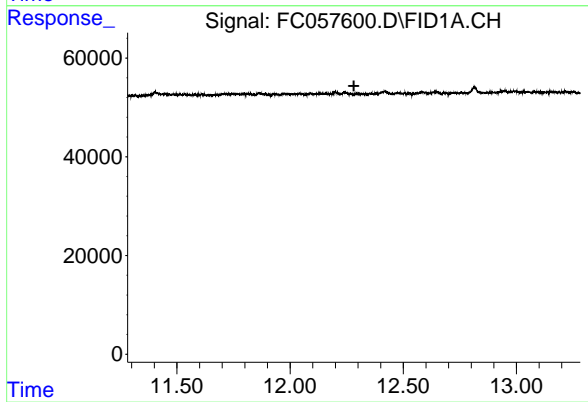




#9 ortho-Terphenyl (SURR)

R.T.: 0.000 min  
Exp R.T. : 10.846 min  
Response: 0  
Conc: N.D.

Instrument :  
FID\_C  
ClientSampleId :  
I.BLK



#12 1-chlorooctadecane (SURR)

R.T.: 0.000 min  
Exp R.T. : 12.282 min  
Response: 0  
Conc: N.D.