

Data Path : Z:\pestpcbsrv\HPCHEM1\FID_C\Data\FC121919AL\
 Data File : FC044988.D
 Signal(s) : FID1A.CH
 Acq On : 19 Dec 2019 13:22
 Operator : DD\AJ
 Sample : PB125603BL
 Misc :
 ALS Vial : 3 Sample Multiplier: 1

Integration File: autoint1.e
 Quant Time: Dec 20 00:46:32 2019
 Quant Method : Z:\pestpcbsrv\HPCHEM1\FID_C\Method\Alaphatic EPH 112219.M
 Quant Title : GC Extractables
 QLast Update : Sat Nov 23 03:00:37 2019
 Response via : Initial Calibration
 Integrator: ChemStation 6890 Scale Mode: Large solvent peaks clipped

Volume Inj. : 1 ul
 Signal Phase : Rxi-1ms
 Signal Info : 20M x 0.18mm x 0.18um

Compound	R.T.	Response	Conc Units

System Monitoring Compounds			
9) S ortho-Terphenyl (SURR)	11.757	4132638	36.267 ug/ml
Spiked Amount	50.000	Recovery	= 72.53%
12) S 1-chlorooctadecane (S...	13.182	3256761	36.777 ug/ml
Spiked Amount	50.000	Recovery	= 73.55%

Target Compounds

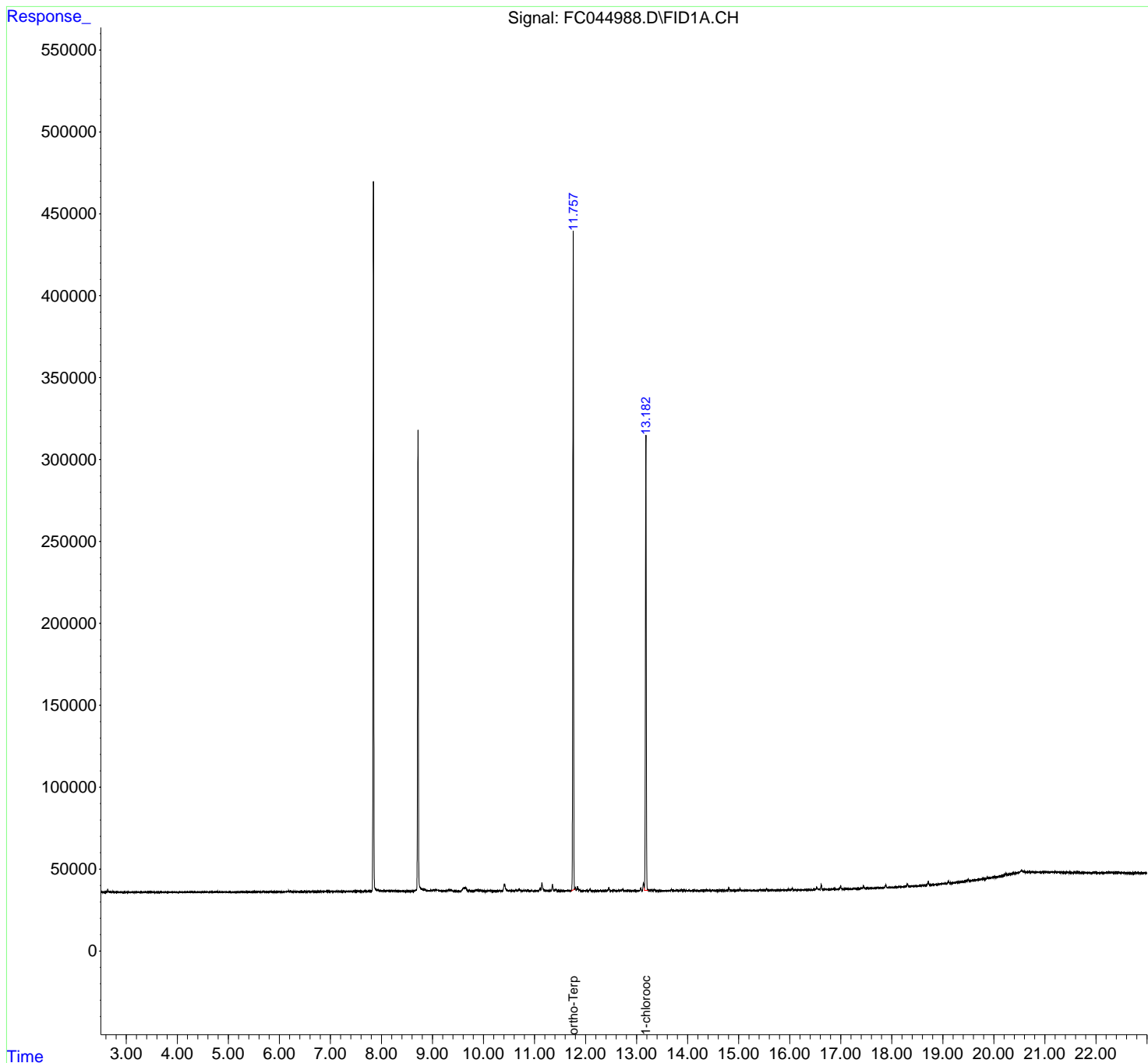
(f)=RT Delta > 1/2 Window

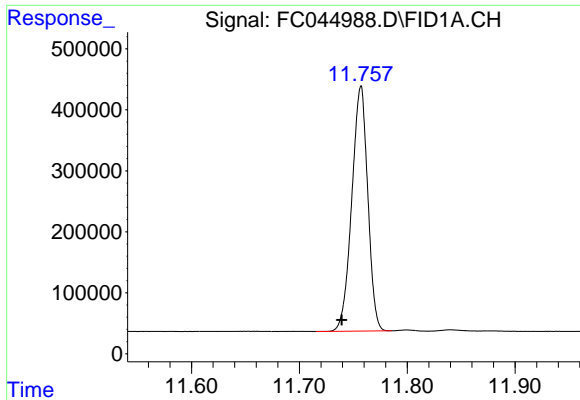
(m)=manual int.

Data Path : Z:\pestpcbsrv\HPCHEM1\FID_C\Data\FC121919AL\
Data File : FC044988.D
Signal(s) : FID1A.CH
Acq On : 19 Dec 2019 13:22
Operator : DD\AJ
Sample : PB125603BL
Misc :
ALS Vial : 3 Sample Multiplier: 1

Integration File: autoint1.e
Quant Time: Dec 20 00:46:32 2019
Quant Method : Z:\pestpcbsrv\HPCHEM1\FID_C\Method\Alaphatic EPH 112219.M
Quant Title : GC Extractables
QLast Update : Sat Nov 23 03:00:37 2019
Response via : Initial Calibration
Integrator: ChemStation 6890 Scale Mode: Large solvent peaks clipped

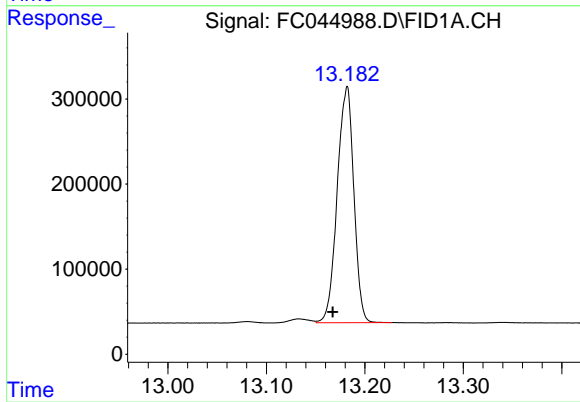
Volume Inj. : 1 ul
Signal Phase : Rxi-1ms
Signal Info : 20M x 0.18mm x 0.18um





#9 ortho-Terphenyl (SURR)

R.T.: 11.757 min
Delta R.T.: 0.018 min
Response: 4132638
Conc: 36.27 ug/ml



#12 1-chlorooctadecane (SURR)

R.T.: 13.182 min
Delta R.T.: 0.015 min
Response: 3256761
Conc: 36.78 ug/ml