

Data Path : Z:\pestpcbsrv\HPCHEM1\FID_C\Data\FC121924AL\
 Data File : FC068056.D
 Signal(s) : FID1A.ch
 Acq On : 19 Dec 2024 21:21
 Operator : YP/AJ
 Sample : 20 PPM ALIPHATIC HC STD
 Misc :
 ALS Vial : 2 Sample Multiplier: 1

Instrument :
 FID_C
 ClientSampleId :

Integration File: autoint1.e
 Quant Time: Dec 20 00:43:56 2024
 Quant Method : Z:\pestpcbsrv\HPCHEM1\FID_C\Method\Aliphatic EPH 121024.M
 Quant Title : GC Extractables
 QLast Update : Tue Dec 10 07:59:10 2024
 Response via : Initial Calibration
 Integrator: ChemStation

Volume Inj. : 1 ul
 Signal Phase : Rxi-1ms
 Signal Info : 20M x 0.18mm x 0.18um

Compound	R.T.	Response	Conc Units

System Monitoring Compounds			
9) S ortho-Terphenyl (SURR)	11.426	2924682	16.914 ug/ml
Spiked Amount	50.000	Recovery =	33.83%
12) S 1-chlorooctadecane (S...	12.868	2182193	17.103 ug/ml
Spiked Amount	50.000	Recovery =	34.21%
Target Compounds			
1) T n-Nonane (C9)	3.219	2626317	16.904 ug/ml
2) T n-Decane (C10)	4.279	2687302	16.952 ug/ml
3) T A~Naphthalene (C11.7)	5.850	2962708	16.971 ug/ml
4) T n-Dodecane (C12)	6.291	2716679	16.872 ug/ml
5) T A~2-methylnaphthalene...	6.905	2862065	17.082 ug/ml
6) T n-Tetradecane (C14)	8.083	2701749	16.992 ug/ml
7) T n-Hexadecane (C16)	9.680	2760420	17.087 ug/ml
8) T n-Octadecane (C18)	11.120	2744254	17.094 ug/ml
10) T n-Eicosane (C20)	12.427	2574897	17.117 ug/ml
11) T n-Heneicosane (C21)	13.038	2502762	17.129 ug/ml
13) T n-Docosane (C22)	13.623	2469328	17.250 ug/ml
14) T n-Tetracosane (C24)	14.724	2425872	17.459 ug/ml
15) T n-Hexacosane (C26)	15.743	2367552	17.704 ug/ml
16) T n-Octacosane (C28)	16.692	2444873	18.849 ug/ml
17) T n-Tricontane (C30)	17.578	2688195	20.751 ug/ml
18) T n-Dotriacontane (C32)	18.409	2720584	21.960 ug/ml
19) T n-Tetratriacontane (C34)	19.192	2360095	21.623 ug/ml
20) T n-Hexatriacontane (C36)	19.930	1960749	20.725 ug/ml
21) T n-Octatriacontane (C38)	20.644	1823689	20.160 ug/ml
22) T n-Tetracontane (C40)	21.509	1611853	18.288 ug/ml

(f)=RT Delta > 1/2 Window

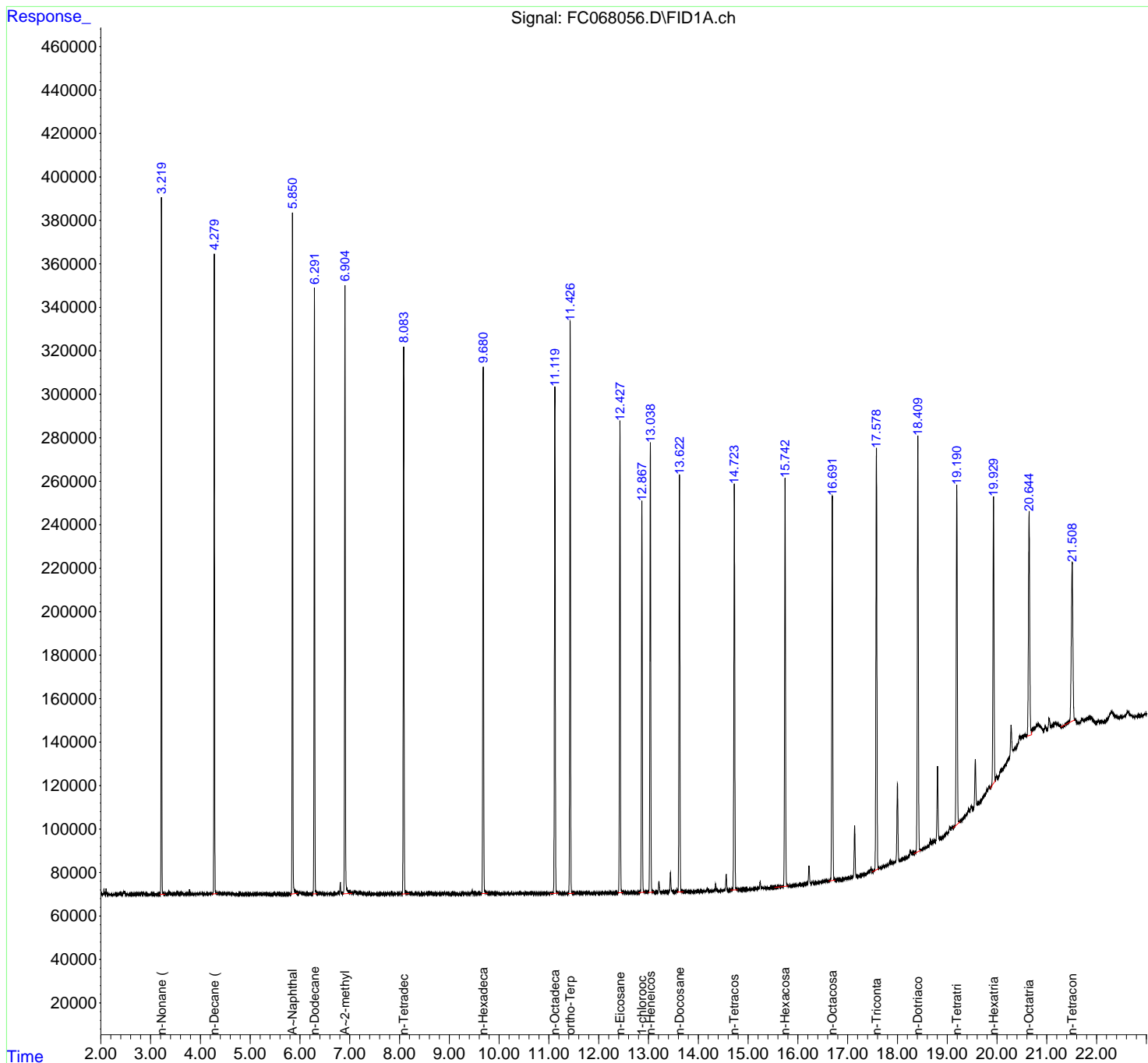
(m)=manual int.

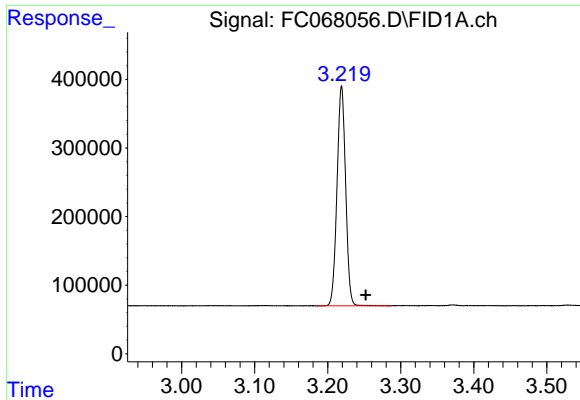
Data Path : Z:\pestpcbsrv\HPCHEM1\FID_C\Data\FC121924AL\
 Data File : FC068056.D
 Signal(s) : FID1A.ch
 Acq On : 19 Dec 2024 21:21
 Operator : YP/AJ
 Sample : 20 PPM ALIPHATIC HC STD
 Misc :
 ALS Vial : 2 Sample Multiplier: 1

Instrument :
 FID_C
 ClientSampleId :

Integration File: autoint1.e
 Quant Time: Dec 20 00:43:56 2024
 Quant Method : Z:\pestpcbsrv\HPCHEM1\FID_C\Method\Aliphatic EPH 121024.M
 Quant Title : GC Extractables
 QLast Update : Tue Dec 10 07:59:10 2024
 Response via : Initial Calibration
 Integrator: ChemStation

Volume Inj. : 1 ul
 Signal Phase : Rxi-1ms
 Signal Info : 20M x 0.18mm x 0.18um

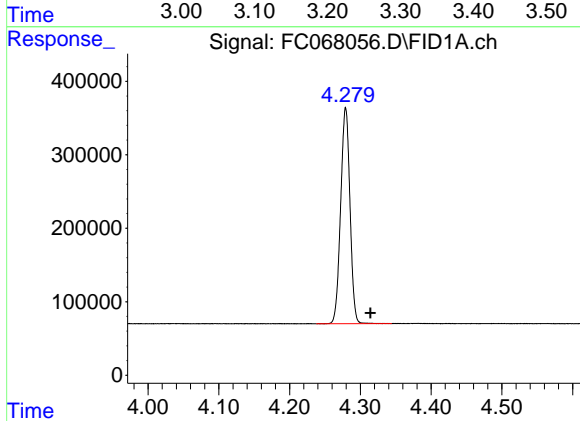




#1 n-Nonane (C9)

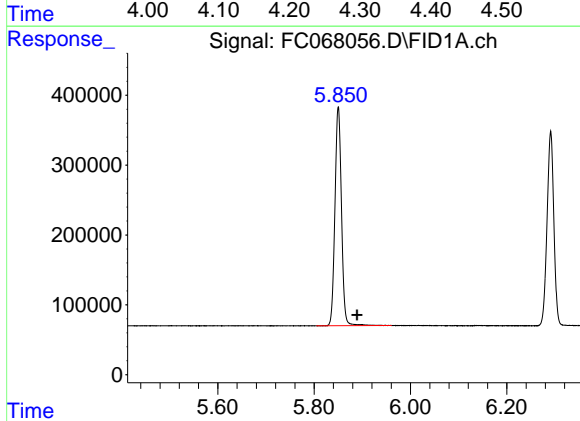
R.T.: 3.219 min
 Delta R.T.: -0.033 min
 Response: 2626317
 Conc: 16.90 ug/ml

Instrument :
 FID_C
 ClientSampleId :



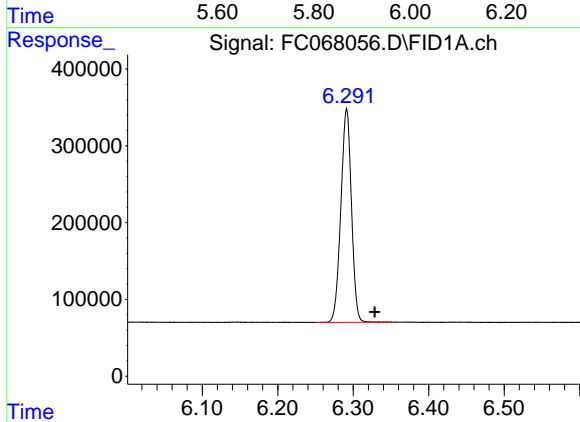
#2 n-Decane (C10)

R.T.: 4.279 min
 Delta R.T.: -0.035 min
 Response: 2687302
 Conc: 16.95 ug/ml



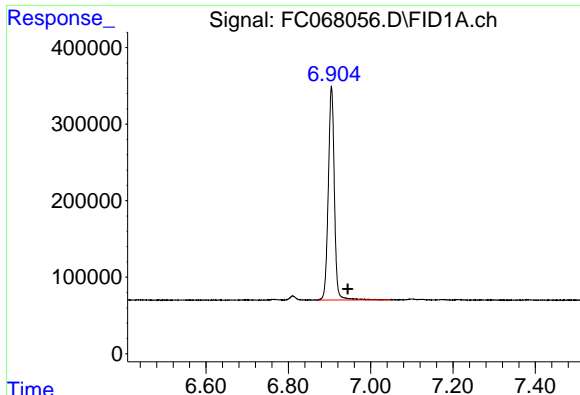
#3 A~Naphthalene (C11.7)

R.T.: 5.850 min
 Delta R.T.: -0.039 min
 Response: 2962708
 Conc: 16.97 ug/ml



#4 n-Dodecane (C12)

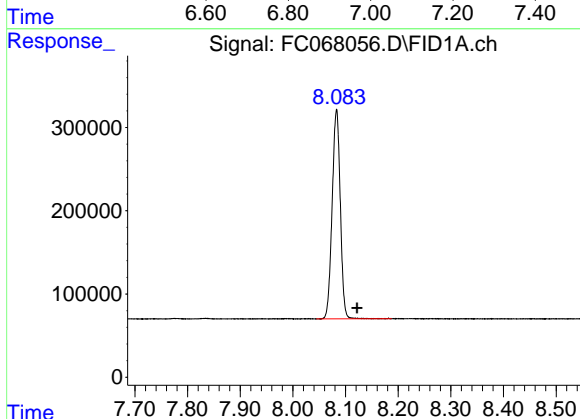
R.T.: 6.291 min
 Delta R.T.: -0.037 min
 Response: 2716679
 Conc: 16.87 ug/ml



#5 A~2-methylnaphthalene (C12.89)

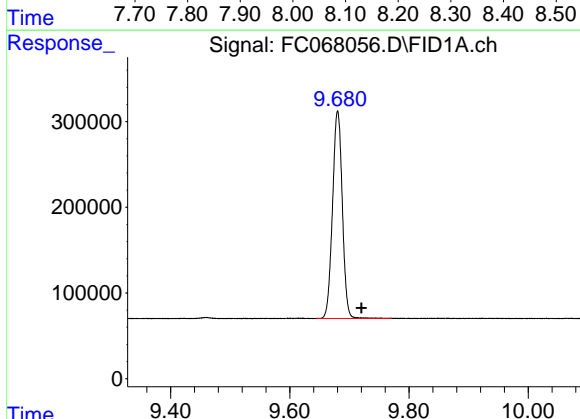
R.T.: 6.905 min
 Delta R.T.: -0.039 min
 Response: 2862065
 Conc: 17.08 ug/ml

Instrument :
 FID_C
 ClientSampleId :



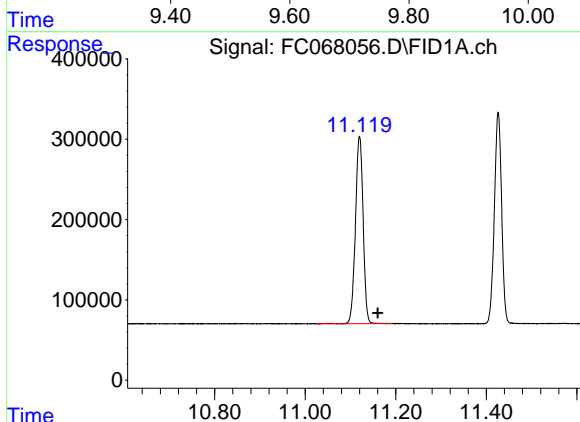
#6 n-Tetradecane (C14)

R.T.: 8.083 min
 Delta R.T.: -0.039 min
 Response: 2701749
 Conc: 16.99 ug/ml



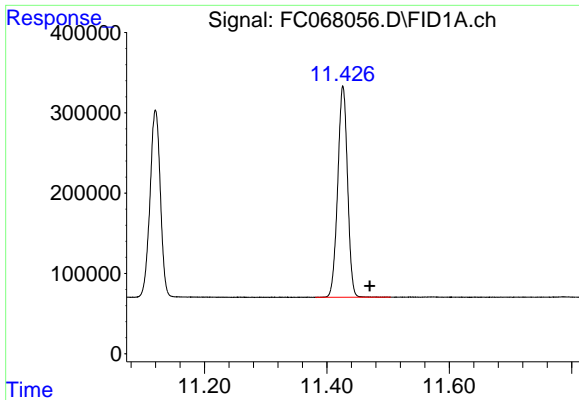
#7 n-Hexadecane (C16)

R.T.: 9.680 min
 Delta R.T.: -0.040 min
 Response: 2760420
 Conc: 17.09 ug/ml



#8 n-Octadecane (C18)

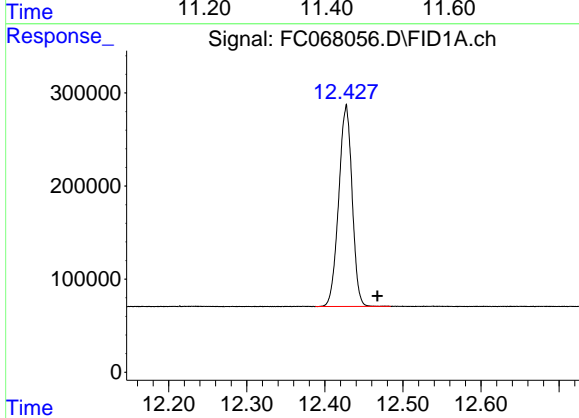
R.T.: 11.120 min
 Delta R.T.: -0.040 min
 Response: 2744254
 Conc: 17.09 ug/ml



#9 ortho-Terphenyl (SURR)

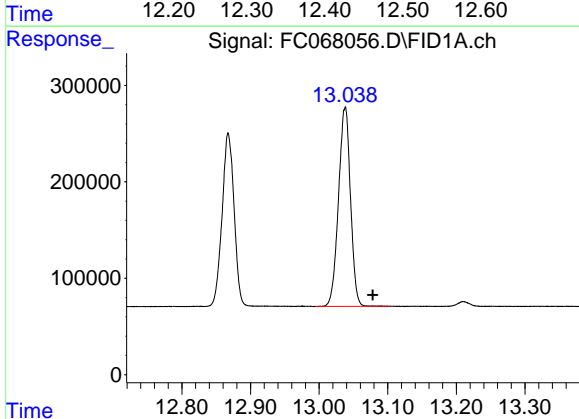
R.T.: 11.426 min
Delta R.T.: -0.044 min
Response: 2924682
Conc: 16.91 ug/ml

Instrument :
FID_C
ClientSampleId :



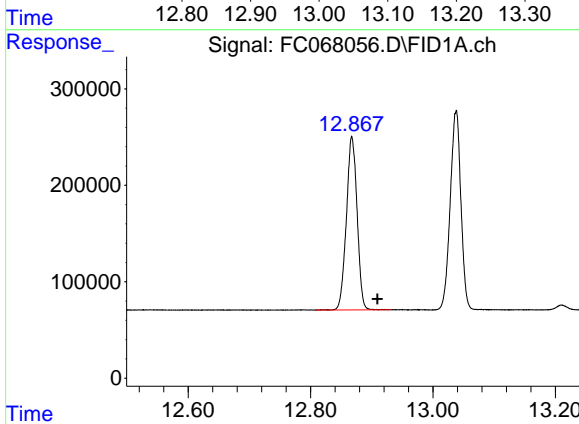
#10 n-Eicosane (C20)

R.T.: 12.427 min
Delta R.T.: -0.040 min
Response: 2574897
Conc: 17.12 ug/ml



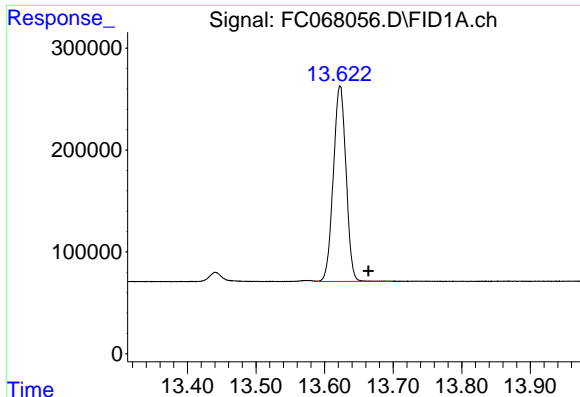
#11 n-Heneicosane (C21)

R.T.: 13.038 min
Delta R.T.: -0.041 min
Response: 2502762
Conc: 17.13 ug/ml



#12 1-chlorooctadecane (SURR)

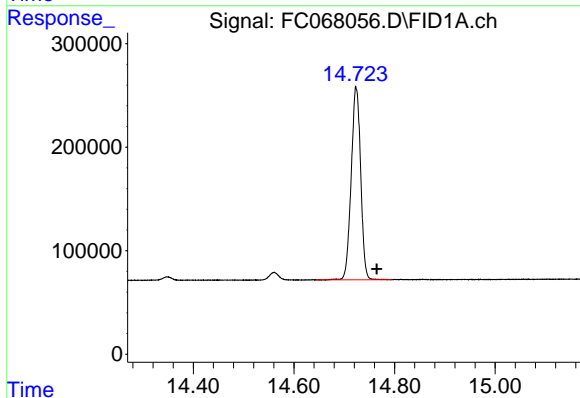
R.T.: 12.868 min
Delta R.T.: -0.041 min
Response: 2182193
Conc: 17.10 ug/ml



#13 n-Docosane (C22)

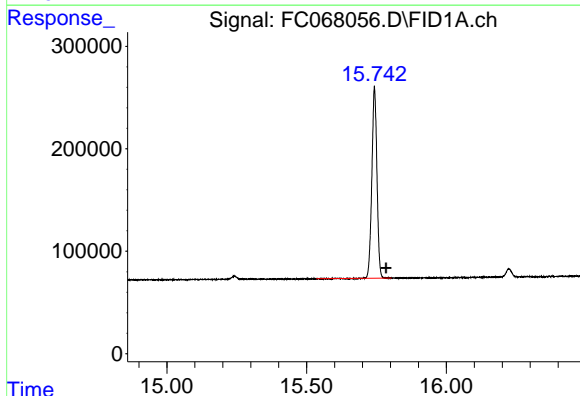
R.T.: 13.623 min
Delta R.T.: -0.042 min
Response: 2469328
Conc: 17.25 ug/ml

Instrument :
FID_C
ClientSampleId :



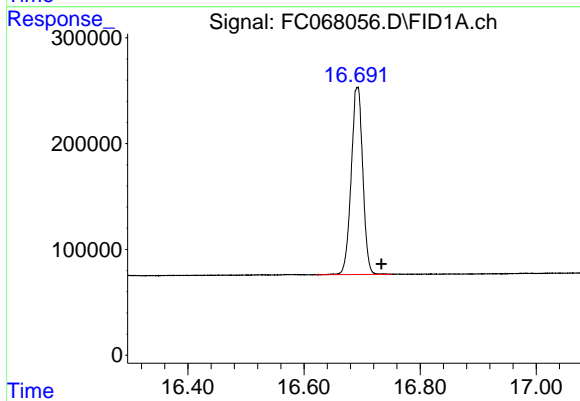
#14 n-Tetracosane (C24)

R.T.: 14.724 min
Delta R.T.: -0.041 min
Response: 2425872
Conc: 17.46 ug/ml



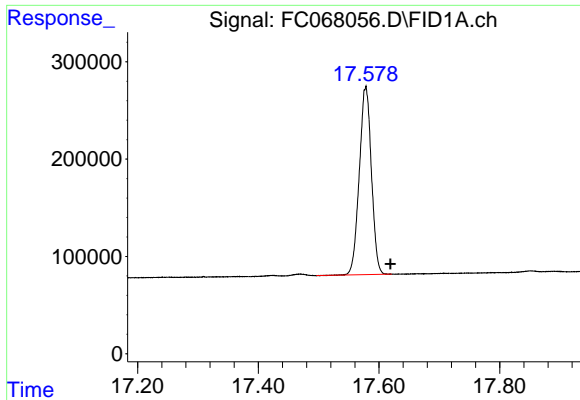
#15 n-Hexacosane (C26)

R.T.: 15.743 min
Delta R.T.: -0.042 min
Response: 2367552
Conc: 17.70 ug/ml



#16 n-Octacosane (C28)

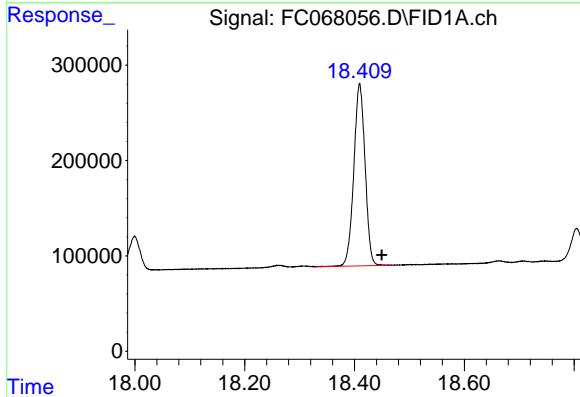
R.T.: 16.692 min
Delta R.T.: -0.041 min
Response: 2444873
Conc: 18.85 ug/ml



#17 n-Tricontane (C30)

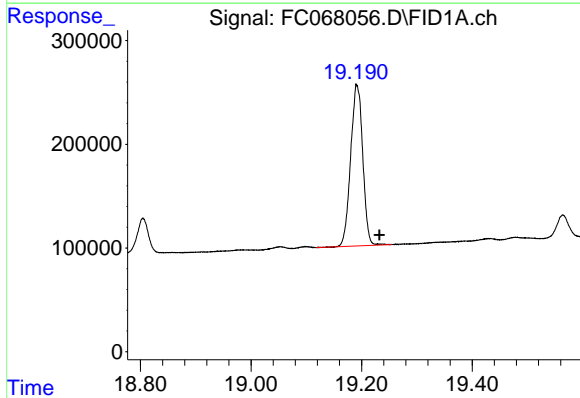
R.T.: 17.578 min
 Delta R.T.: -0.041 min
 Response: 2688195
 Conc: 20.75 ug/ml

Instrument :
 FID_C
 ClientSampleId :



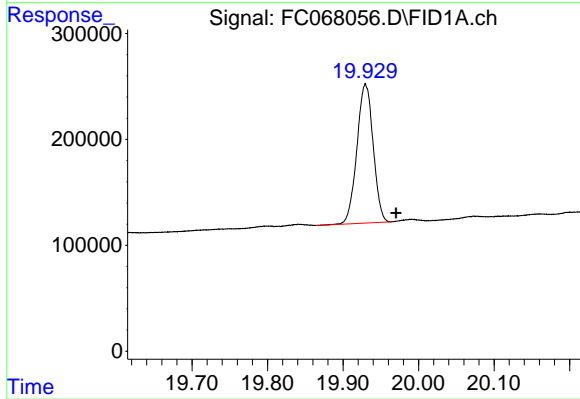
#18 n-Dotriacontane (C32)

R.T.: 18.409 min
 Delta R.T.: -0.040 min
 Response: 2720584
 Conc: 21.96 ug/ml



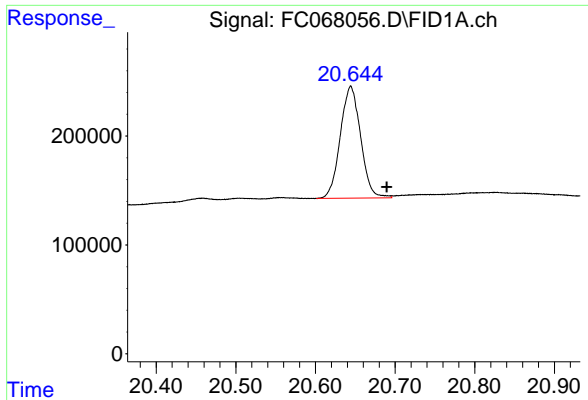
#19 n-Tetratriacontane (C34)

R.T.: 19.192 min
 Delta R.T.: -0.040 min
 Response: 2360095
 Conc: 21.62 ug/ml



#20 n-Hexatriacontane (C36)

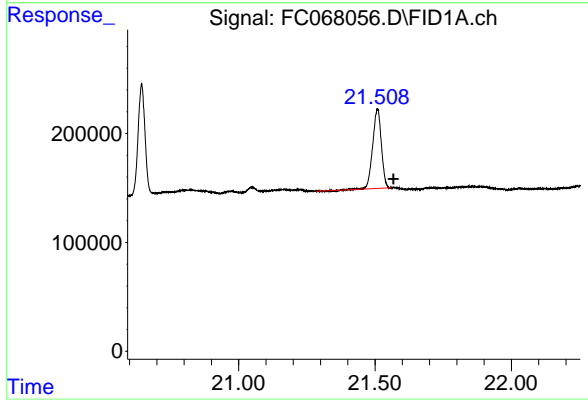
R.T.: 19.930 min
 Delta R.T.: -0.040 min
 Response: 1960749
 Conc: 20.72 ug/ml



#21 n-Octatriacontane (C38)

R.T.: 20.644 min
Delta R.T.: -0.045 min
Response: 1823689
Conc: 20.16 ug/ml

Instrument :
FID_C
ClientSampleId :



#22 n-Tetracontane (C40)

R.T.: 21.509 min
Delta R.T.: -0.059 min
Response: 1611853
Conc: 18.29 ug/ml