

Data Path : Z:\pestpcbsrv\HPCHEM1\FID_C\Data\FC122021AL\
 Data File : FC057623.D
 Signal(s) : FID1A.CH
 Acq On : 20 Dec 2021 16:51
 Operator : AJ\MA
 Sample : PB141508BL
 Misc :
 ALS Vial : 3 Sample Multiplier: 1

Integration File: autoint1.e
 Quant Time: Dec 21 01:13:24 2021
 Quant Method : Z:\pestpcbsrv\HPCHEM1\FID_C\Method\Aliphatic EPH 121421.M
 Quant Title : GC Extractables
 QLast Update : Tue Dec 14 20:43:13 2021
 Response via : Initial Calibration
 Integrator: ChemStation 6890 Scale Mode: Large solvent peaks clipped

Volume Inj. : 1 ul
 Signal Phase : Rxi-1ms
 Signal Info : 20M x 0.18mm x 0.18um

Compound	R.T.	Response	Conc Units

System Monitoring Compounds			
12) S 1-chlorooctadecane (S...	12.237	3310123	29.891 ug/ml
Spiked Amount 50.000		Recovery =	59.78%
Target Compounds			
4) T n-Dodecane (C12)	5.656	146069	1.183 ug/ml
6) T n-Tetradecane (C14)	7.444	64809	0.523 ug/ml
10) T n-Eicosane (C20)	11.792	87470	0.673 ug/ml
13) T n-Docosane (C22)	12.991	151111	1.150 ug/ml
14) T n-Tetracosane (C24)	14.092	322486	2.425 ug/ml
15) T n-Hexacosane (C26)	15.112	426554	3.253 ug/ml
16) T n-Octacosane (C28)	16.061	573119	4.358 ug/ml
17) T n-Tricontane (C30)	16.949	606822	4.440 ug/ml
18) T n-Dotriacontane (C32)	17.781	534036	3.983 ug/ml
21) T n-Octatriacontane (C38)	20.025	66655	0.607 ug/ml

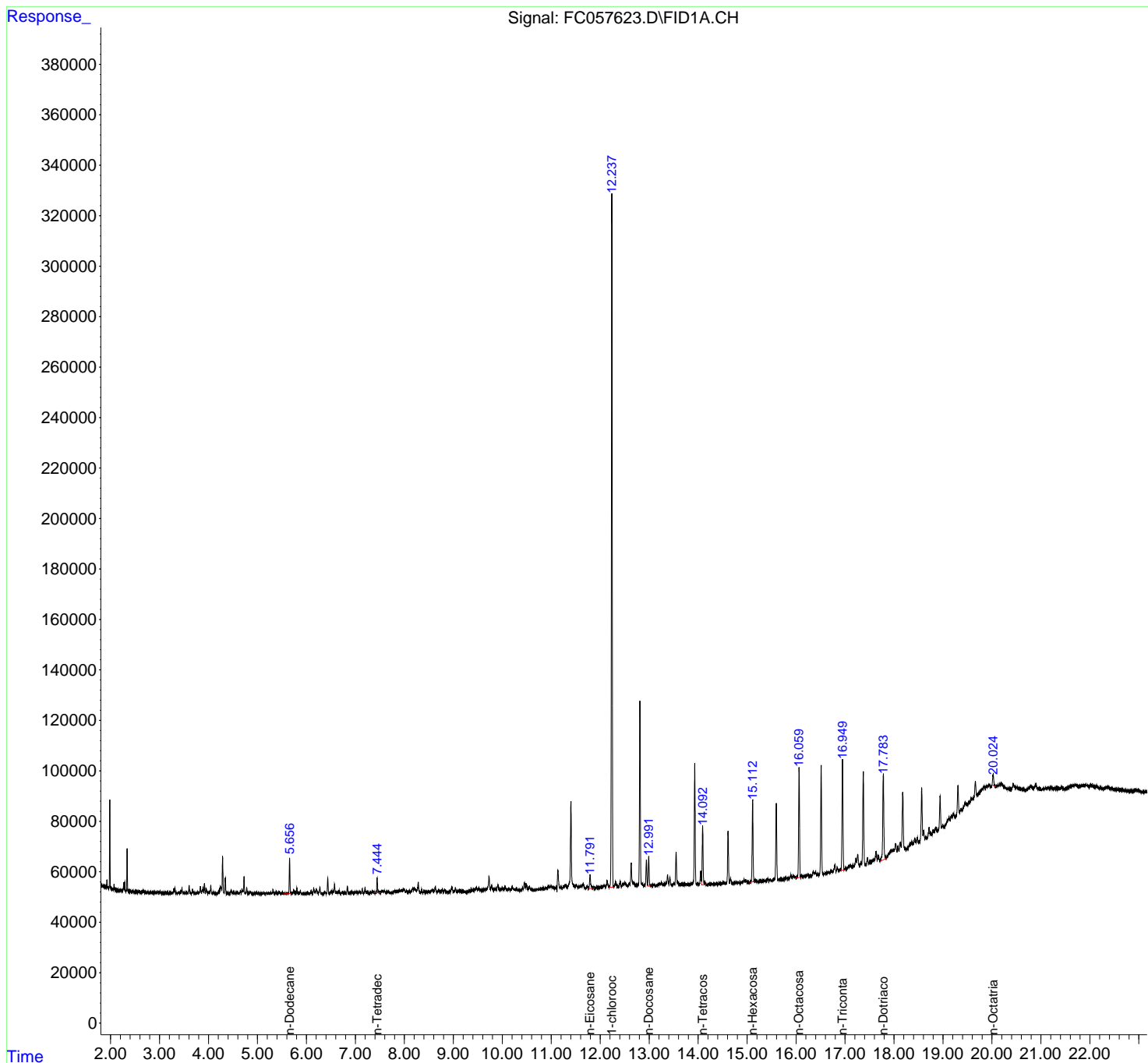
(f)=RT Delta > 1/2 Window

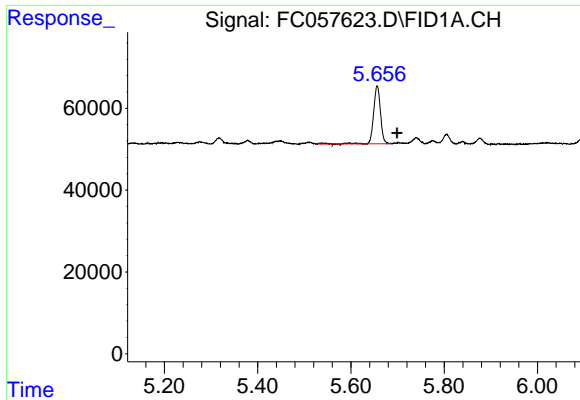
(m)=manual int.

Data Path : Z:\pestpcbsrv\HPCHEM1\FID_C\Data\FC122021AL\
 Data File : FC057623.D
 Signal(s) : FID1A.CH
 Acq On : 20 Dec 2021 16:51
 Operator : AJ\MA
 Sample : PB141508BL
 Misc :
 ALS Vial : 3 Sample Multiplier: 1

Integration File: autoint1.e
 Quant Time: Dec 21 01:13:24 2021
 Quant Method : Z:\pestpcbsrv\HPCHEM1\FID_C\Method\Aliphatic EPH 121421.M
 Quant Title : GC Extractables
 QLast Update : Tue Dec 14 20:43:13 2021
 Response via : Initial Calibration
 Integrator: ChemStation 6890 Scale Mode: Large solvent peaks clipped

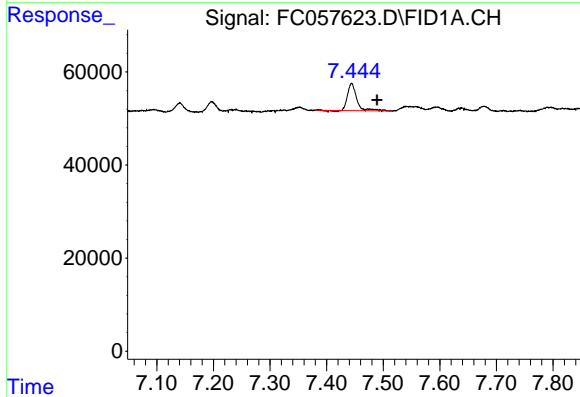
Volume Inj. : 1 ul
 Signal Phase : Rxi-1ms
 Signal Info : 20M x 0.18mm x 0.18um





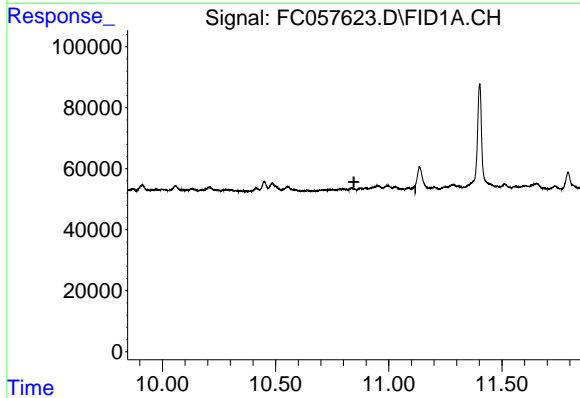
#4 n-Dodecane (C12)

R.T.: 5.656 min
 Delta R.T.: -0.043 min
 Response: 146069
 Conc: 1.18 ug/ml



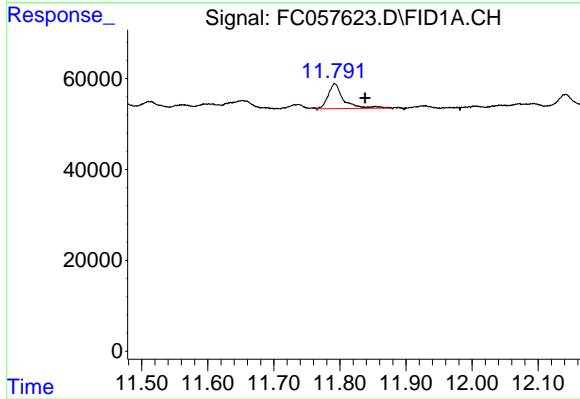
#6 n-Tetradecane (C14)

R.T.: 7.444 min
 Delta R.T.: -0.045 min
 Response: 64809
 Conc: 0.52 ug/ml



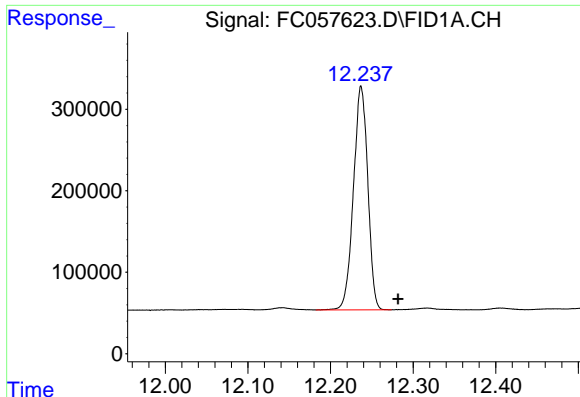
#9 ortho-Terphenyl (SURR)

R.T.: 0.000 min
 Exp R.T. : 10.846 min
 Response: 0
 Conc: N.D.



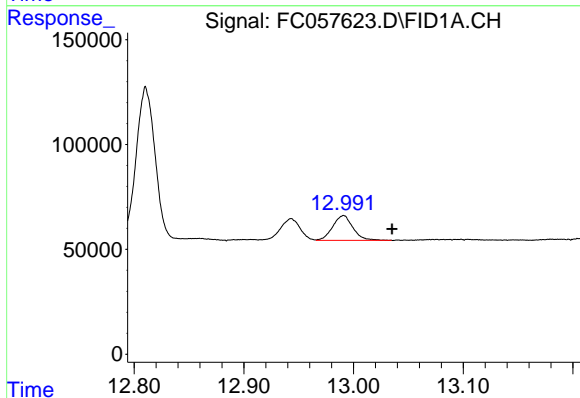
#10 n-Eicosane (C20)

R.T.: 11.792 min
 Delta R.T.: -0.046 min
 Response: 87470
 Conc: 0.67 ug/ml



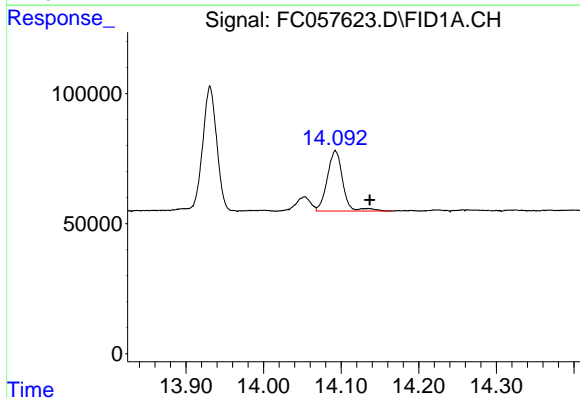
#12 1-chlorooctadecane (SURR)

R.T.: 12.237 min
 Delta R.T.: -0.045 min
 Response: 3310123
 Conc: 29.89 ug/ml



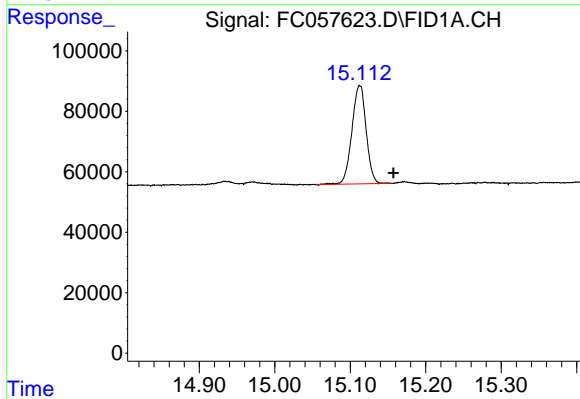
#13 n-Docosane (C22)

R.T.: 12.991 min
 Delta R.T.: -0.044 min
 Response: 151111
 Conc: 1.15 ug/ml



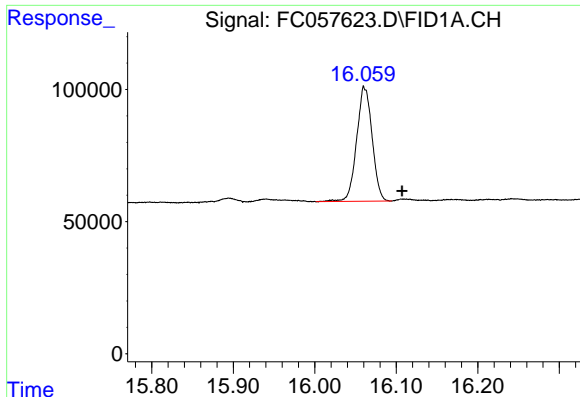
#14 n-Tetracosane (C24)

R.T.: 14.092 min
 Delta R.T.: -0.045 min
 Response: 322486
 Conc: 2.42 ug/ml



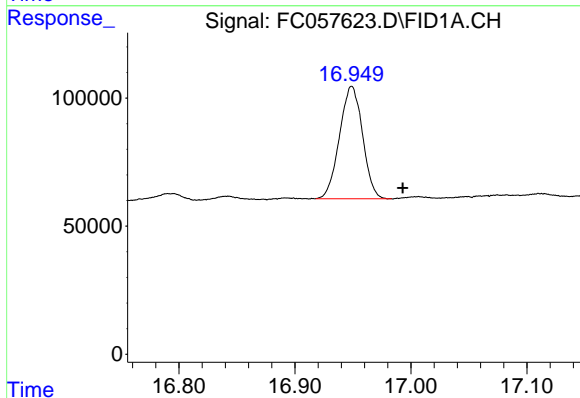
#15 n-Hexacosane (C26)

R.T.: 15.112 min
 Delta R.T.: -0.045 min
 Response: 426554
 Conc: 3.25 ug/ml



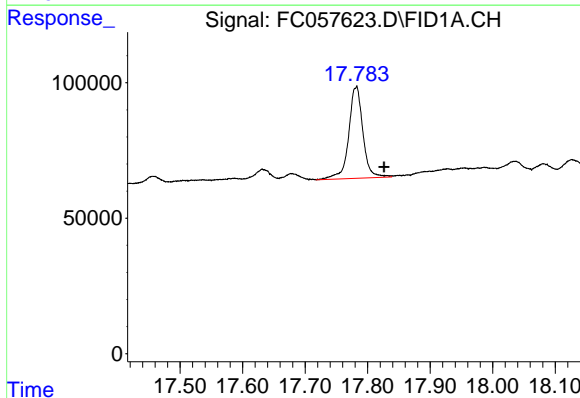
#16 n-Octacosane (C28)

R.T.: 16.061 min
Delta R.T.: -0.046 min
Response: 573119
Conc: 4.36 ug/ml



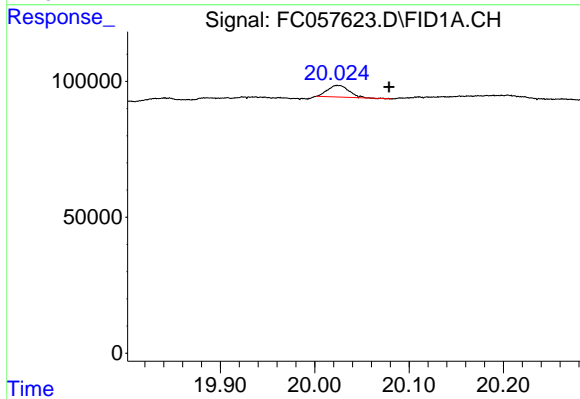
#17 n-Tricontane (C30)

R.T.: 16.949 min
Delta R.T.: -0.044 min
Response: 606822
Conc: 4.44 ug/ml



#18 n-Dotriacontane (C32)

R.T.: 17.781 min
Delta R.T.: -0.045 min
Response: 534036
Conc: 3.98 ug/ml



#21 n-Octatriacontane (C38)

R.T.: 20.025 min
Delta R.T.: -0.054 min
Response: 66655
Conc: 0.61 ug/ml