

Data Path : Z:\pestpcbsrv\HPCHEM1\FID_C\Data\FC122118AL\
 Data File : FC038373.D
 Signal(s) : FID1A.CH
 Acq On : 22 Dec 2018 4:15
 Operator : AJ\SJ
 Sample : J6499-01
 Misc :
 ALS Vial : 24 Sample Multiplier: 1

Instrument :
 FID_C
 ClientSampleId :

Integration File: autoint1.e
 Quant Time: Dec 22 06:13:58 2018
 Quant Method : Z:\pestpcbsrv\HPCHEM1\FID_C\Method\Alaphatic EPH 121018.M
 Quant Title : GC Extractables
 QLast Update : Sat Dec 15 05:55:02 2018
 Response via : Initial Calibration
 Integrator: ChemStation 6890 Scale Mode: Large solvent peaks clipped

Volume Inj. : 1 ul
 Signal Phase : Rxi-1ms
 Signal Info : 20M x 0.18mm x 0.18um

Compound	R.T.	Response	Conc Units

System Monitoring Compounds			
12) S 1-chlorooctadecane (S... Spiked Amount 50.000	12.721	3872101 Recovery =	38.405 ug/ml 76.81%
Target Compounds			
4) T n-Dodecane (C12)	6.175	24144	0.224 ug/ml
6) T n-Tetradecane (C14)	7.955	27153	0.243 ug/ml
7) T n-Hexadecane (C16)	9.545	31921	0.277 ug/ml
8) T n-Octadecane (C18)	10.979	32989	0.273 ug/ml
10) T n-Eicosane (C20)	12.279	39017	0.325 ug/ml
11) T n-Heneicosane (C21)	12.889	37108	0.320 ug/ml
13) T n-Docosane (C22)	13.473	46677	0.404 ug/ml
14) T n-Tetracosane (C24)	14.571	71585	0.623 ug/ml
15) T n-Hexacosane (C26)	15.586	139296	1.238 ug/ml
16) T n-Octacosane (C28)	16.532	198307	1.764 ug/ml
17) T n-Tricontane (C30)	17.417	228804	2.085 ug/ml
18) T n-Dotriacontane (C32)	18.245	159654	1.559 ug/ml
19) T n-Tetratriacontane (C34)	19.025	99556	1.130 ug/ml
20) T n-Hexatriacontane (C36)	19.764	37217	0.475 ug/ml
21) T n-Octatriacontane (C38)	20.465	308946	3.992 ug/ml
22) T n-Tetracontane (C40)	21.262	58938	0.674 ug/ml

(f)=RT Delta > 1/2 Window

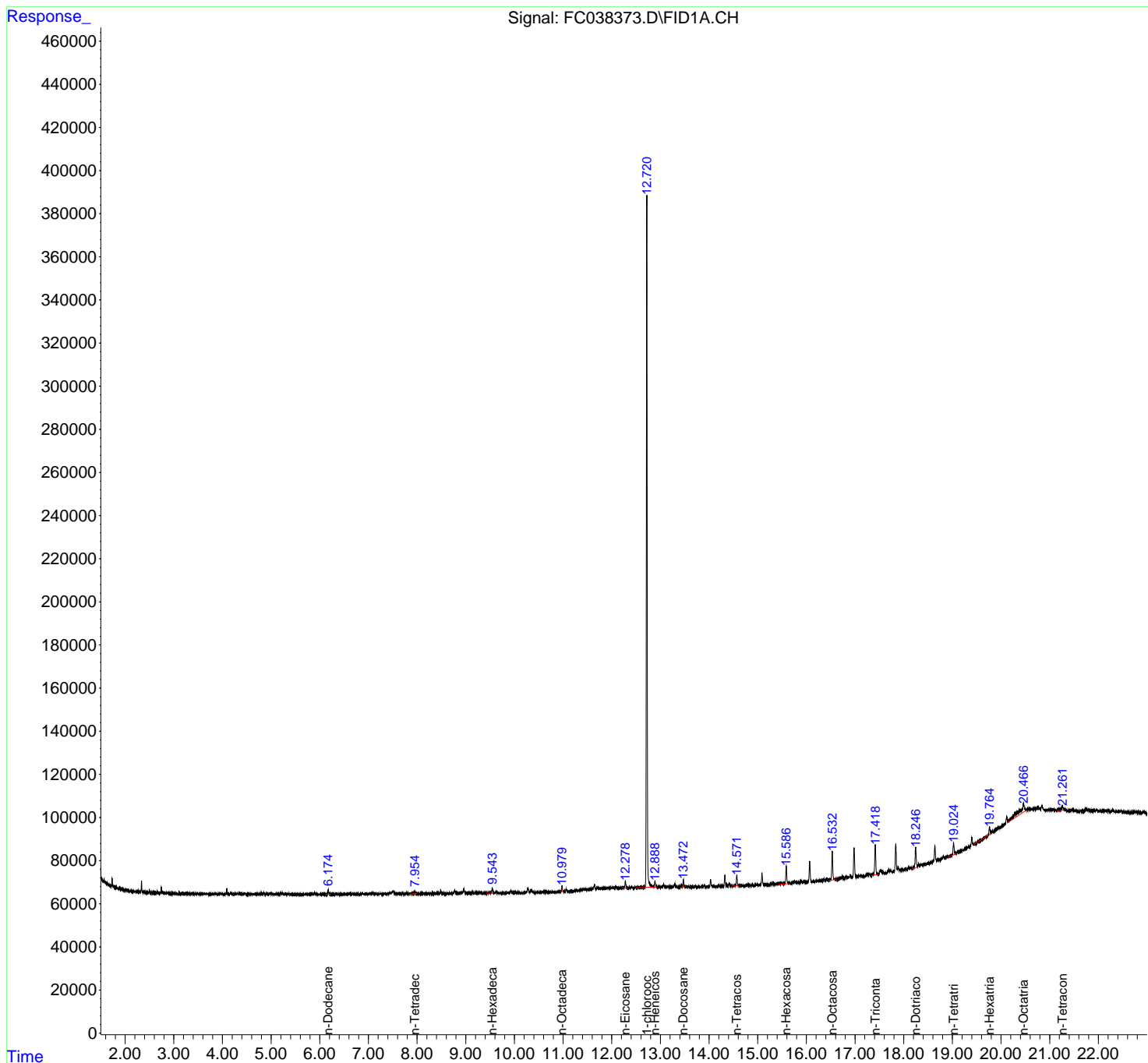
(m)=manual int.

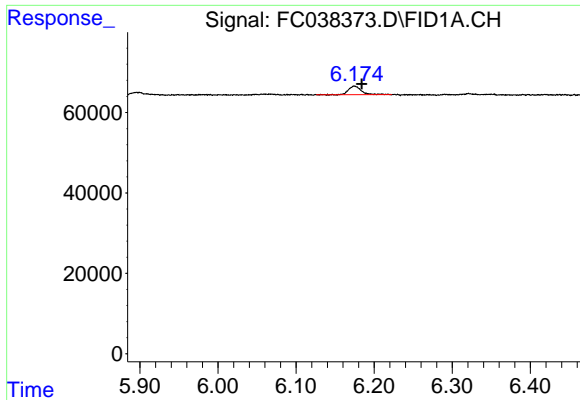
Data Path : Z:\pestpcbsrv\HPCHEM1\FID_C\Data\FC122118AL\
 Data File : FC038373.D
 Signal(s) : FID1A.CH
 Acq On : 22 Dec 2018 4:15
 Operator : AJ\SJ
 Sample : J6499-01
 Misc :
 ALS Vial : 24 Sample Multiplier: 1

Instrument :
 FID_C
 ClientSampled :

Integration File: autoint1.e
 Quant Time: Dec 22 06:13:58 2018
 Quant Method : Z:\pestpcbsrv\HPCHEM1\FID_C\Method\Aliphatic EPH 121018.M
 Quant Title : GC Extractables
 QLast Update : Sat Dec 15 05:55:02 2018
 Response via : Initial Calibration
 Integrator: ChemStation 6890 Scale Mode: Large solvent peaks clipped

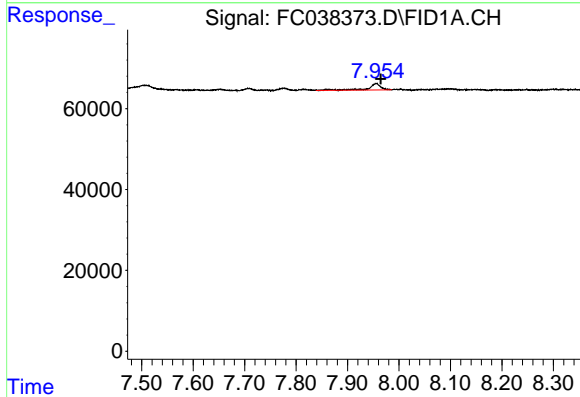
Volume Inj. : 1 ul
 Signal Phase : Rxi-1ms
 Signal Info : 20M x 0.18mm x 0.18um



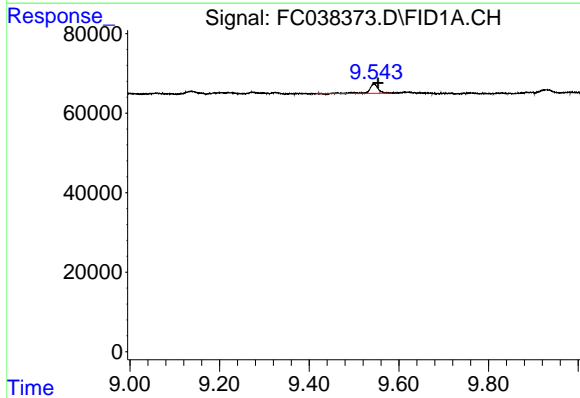


#4 n-Dodecane (C12)
 R.T.: 6.175 min
 Delta R.T.: -0.009 min
 Response: 24144
 Conc: 0.22 ug/ml

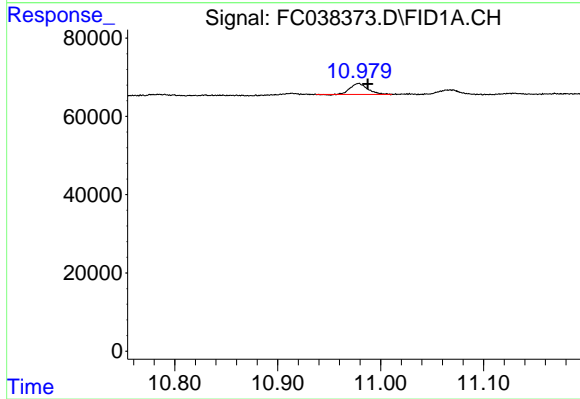
Instrument :
 FID_C
 ClientSampled :



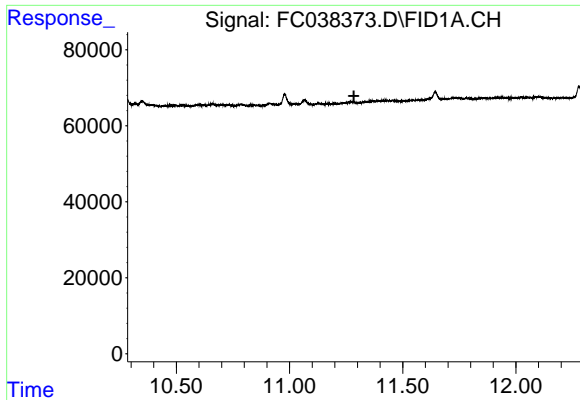
#6 n-Tetradecane (C14)
 R.T.: 7.955 min
 Delta R.T.: -0.009 min
 Response: 27153
 Conc: 0.24 ug/ml



#7 n-Hexadecane (C16)
 R.T.: 9.545 min
 Delta R.T.: -0.009 min
 Response: 31921
 Conc: 0.28 ug/ml



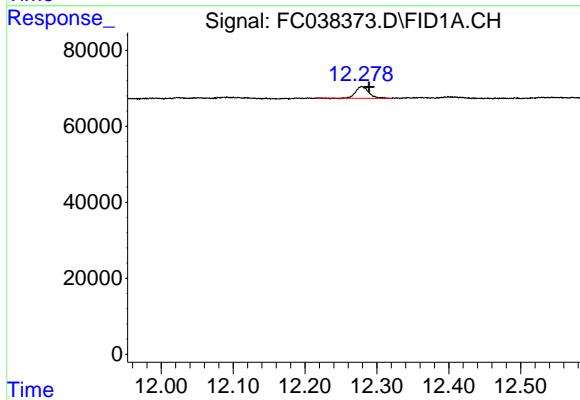
#8 n-Octadecane (C18)
 R.T.: 10.979 min
 Delta R.T.: -0.009 min
 Response: 32989
 Conc: 0.27 ug/ml



#9 ortho-Terphenyl (SURR)

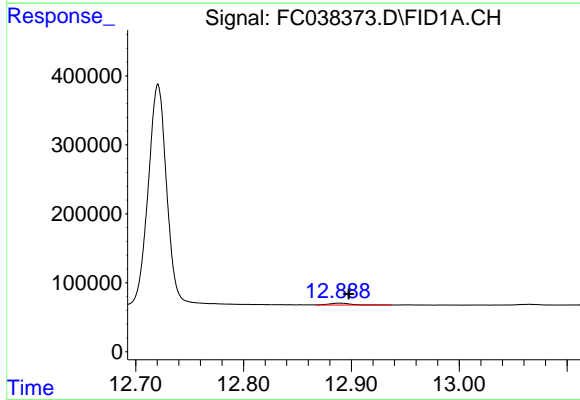
R.T.: 0.000 min
 Exp R.T.: 11.284 min
 Response: 0
 Conc: N.D.

Instrument :
 FID_C
 ClientSampleId :



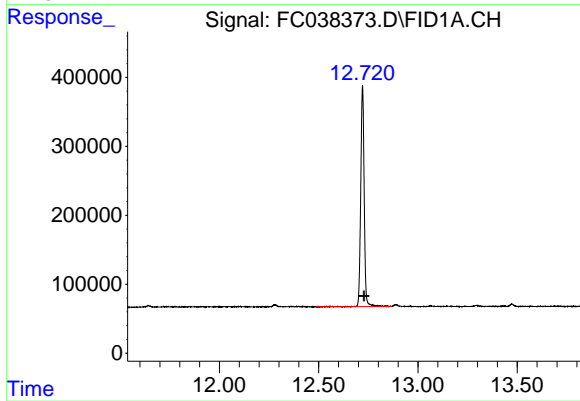
#10 n-Eicosane (C20)

R.T.: 12.279 min
 Delta R.T.: -0.010 min
 Response: 39017
 Conc: 0.32 ug/ml



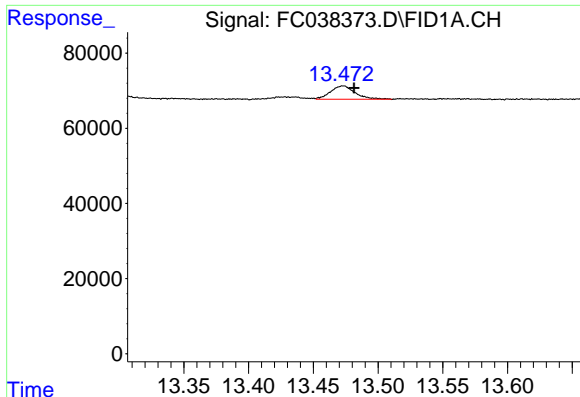
#11 n-Heneicosane (C21)

R.T.: 12.889 min
 Delta R.T.: -0.008 min
 Response: 37108
 Conc: 0.32 ug/ml



#12 1-chlorooctadecane (SURR)

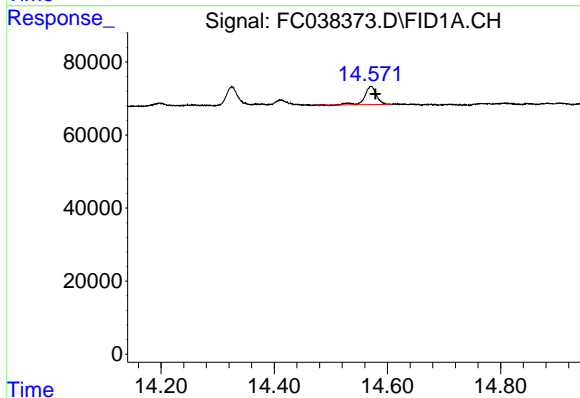
R.T.: 12.721 min
 Delta R.T.: -0.008 min
 Response: 3872101
 Conc: 38.40 ug/ml



#13 n-Docosane (C22)

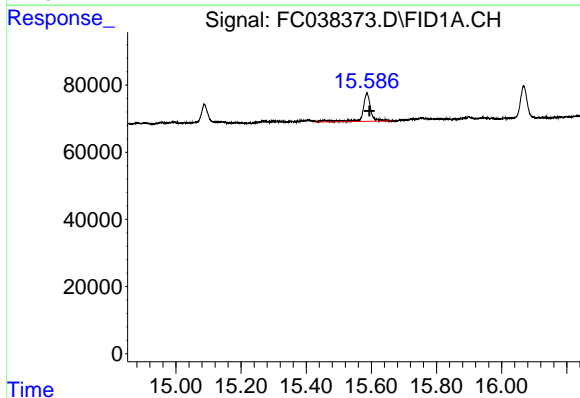
R.T.: 13.473 min
Delta R.T.: -0.009 min
Response: 46677
Conc: 0.40 ug/ml

Instrument :
FID_C
ClientSampleId :



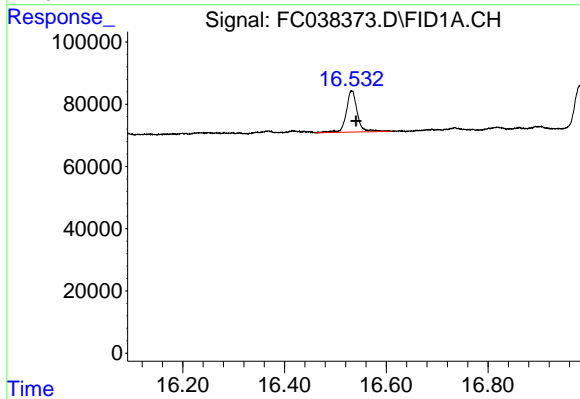
#14 n-Tetracosane (C24)

R.T.: 14.571 min
Delta R.T.: -0.008 min
Response: 71585
Conc: 0.62 ug/ml



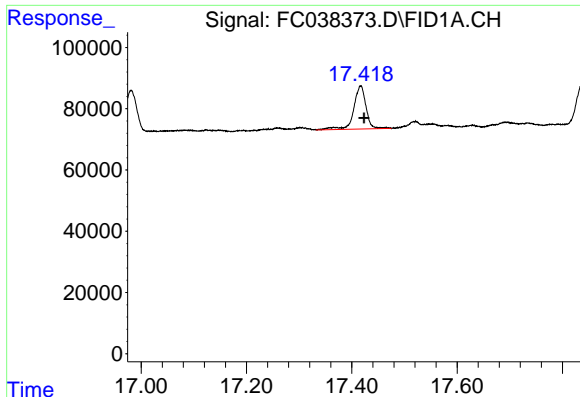
#15 n-Hexacosane (C26)

R.T.: 15.586 min
Delta R.T.: -0.008 min
Response: 139296
Conc: 1.24 ug/ml



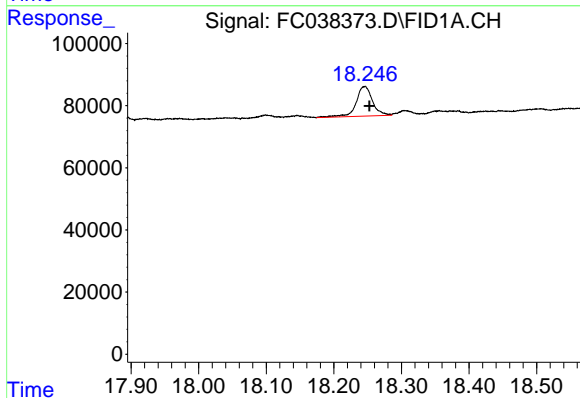
#16 n-Octacosane (C28)

R.T.: 16.532 min
Delta R.T.: -0.008 min
Response: 198307
Conc: 1.76 ug/ml

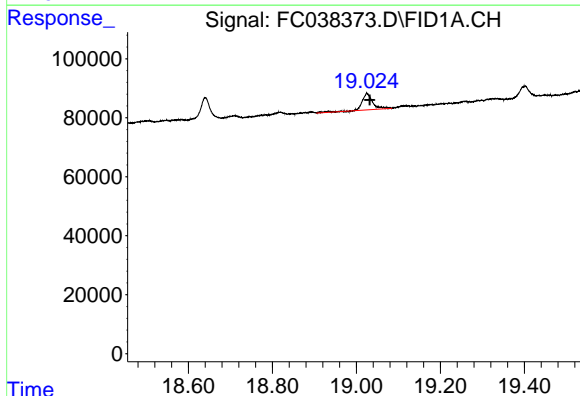


#17 n-Tricontane (C30)
 R.T.: 17.417 min
 Delta R.T.: -0.007 min
 Response: 228804
 Conc: 2.08 ug/ml

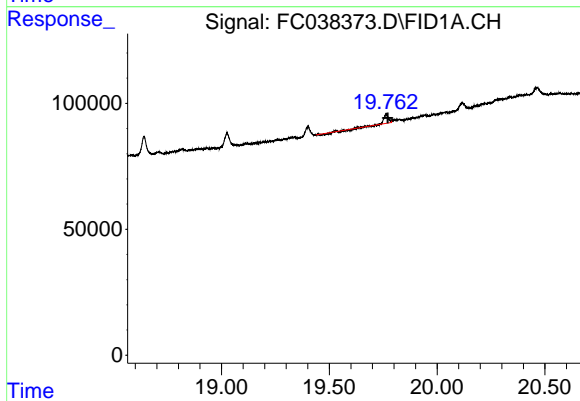
Instrument :
 FID_C
 ClientSampleId :



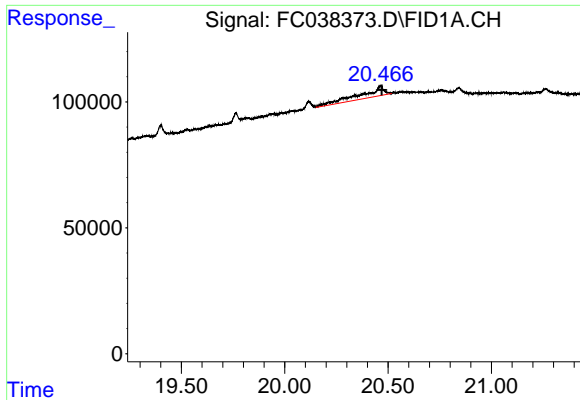
#18 n-Dotriacontane (C32)
 R.T.: 18.245 min
 Delta R.T.: -0.007 min
 Response: 159654
 Conc: 1.56 ug/ml



#19 n-Tetratriacontane (C34)
 R.T.: 19.025 min
 Delta R.T.: -0.006 min
 Response: 99556
 Conc: 1.13 ug/ml



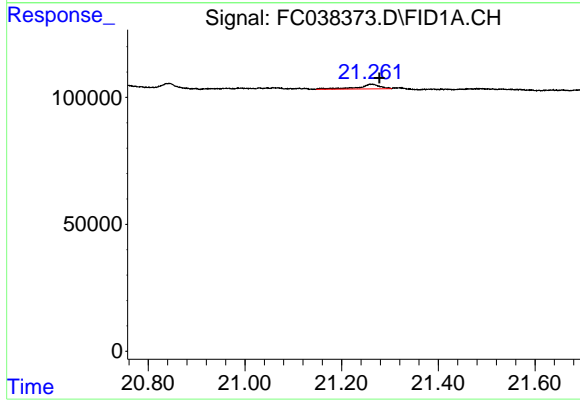
#20 n-Hexatriacontane (C36)
 R.T.: 19.764 min
 Delta R.T.: -0.007 min
 Response: 37217
 Conc: 0.48 ug/ml



#21 n-Octatriacontane (C38)

R.T.: 20.465 min
Delta R.T.: -0.005 min
Response: 308946
Conc: 3.99 ug/ml

Instrument :
FID_C
ClientSampleId :



#22 n-Tetracontane (C40)

R.T.: 21.262 min
Delta R.T.: -0.016 min
Response: 58938
Conc: 0.67 ug/ml