

Data Path : Z:\pestpcbsrv\HPCHEM1\FID_C\Data\FC122220AL\
 Data File : FC051407.D
 Signal(s) : FID1A.CH
 Acq On : 22 Dec 2020 15:33
 Operator : DD\AJ
 Sample : L5155-02
 Misc :
 ALS Vial : 6 Sample Multiplier: 1

Integration File: autoint1.e
 Quant Time: Dec 23 00:06:46 2020
 Quant Method : Z:\pestpcbsrv\HPCHEM1\FID_C\Method\Alaphatic EPH 122120.M
 Quant Title : GC Extractables
 QLast Update : Tue Dec 22 00:33:00 2020
 Response via : Initial Calibration
 Integrator: ChemStation 6890 Scale Mode: Large solvent peaks clipped

Volume Inj. : 1 ul
 Signal Phase : Rxi-1ms
 Signal Info : 20M x 0.18mm x 0.18um

Compound	R.T.	Response	Conc Units

System Monitoring Compounds			
9) S ortho-Terphenyl (SURR)	11.567	3841533	33.145 ug/ml
Spiked Amount	50.000	Recovery	= 66.29%
12) S 1-chlorooctadecane (S...	13.008	36169470	400.948 ug/ml
Spiked Amount	50.000	Recovery	= 801.90%

Target Compounds

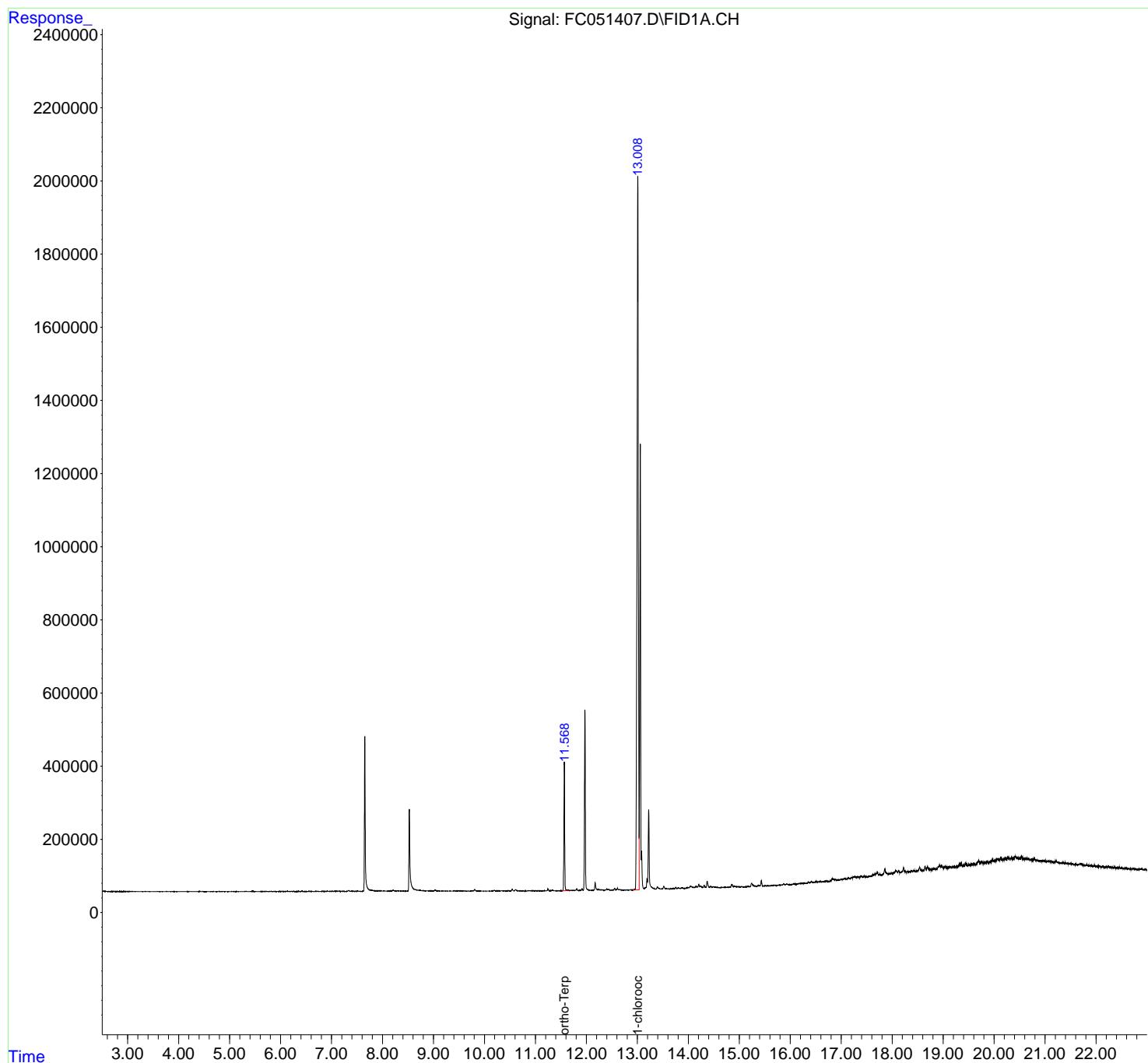
(f)=RT Delta > 1/2 Window

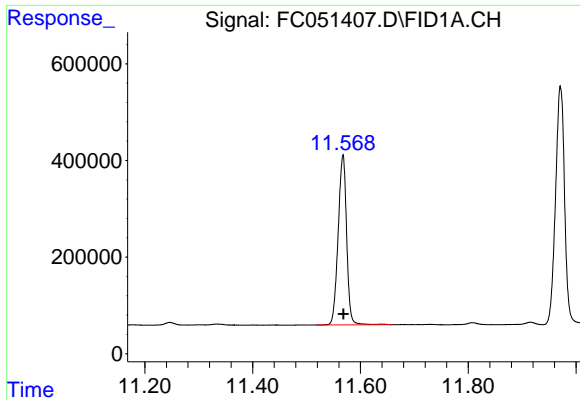
(m)=manual int.

Data Path : Z:\pestpcbsrv\HPCHEM1\FID_C\Data\FC122220AL\
Data File : FC051407.D
Signal(s) : FID1A.CH
Acq On : 22 Dec 2020 15:33
Operator : DD\AJ
Sample : L5155-02
Misc :
ALS Vial : 6 Sample Multiplier: 1

Integration File: autoint1.e
Quant Time: Dec 23 00:06:46 2020
Quant Method : Z:\pestpcbsrv\HPCHEM1\FID_C\Method\Aliphatic EPH 122120.M
Quant Title : GC Extractables
QLast Update : Tue Dec 22 00:33:00 2020
Response via : Initial Calibration
Integrator: ChemStation 6890 Scale Mode: Large solvent peaks clipped

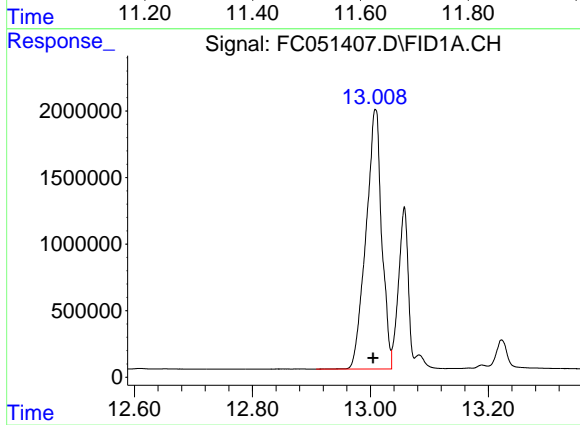
Volume Inj. : 1 ul
Signal Phase : Rxi-1ms
Signal Info : 20M x 0.18mm x 0.18um





#9 ortho-Terphenyl (SURR)

R.T.: 11.567 min
Delta R.T.: -0.001 min
Response: 3841533
Conc: 33.15 ug/ml



#12 1-chlorooctadecane (SURR)

R.T.: 13.008 min
Delta R.T.: 0.004 min
Response: 36169470
Conc: 400.95 ug/ml