

Data Path : Z:\pestpcbsrv\HPCHEM1\FID_C\Data\FC122322AL\
 Data File : FC062485.D
 Signal(s) : FID1A.ch
 Acq On : 23 Dec 2022 18:18
 Operator : YP/AJ
 Sample : N6152-01
 Misc :
 ALS Vial : 8 Sample Multiplier: 1

Instrument :
 FID_C
 ClientSampleId :

Integration File: autoint1.e
 Quant Time: Dec 25 11:51:20 2022
 Quant Method : Z:\pestpcbsrv\HPCHEM1\FID_C\Method\Aliphatic EPH 120722.M
 Quant Title : GC Extractables
 QLast Update : Thu Dec 08 01:05:24 2022
 Response via : Initial Calibration
 Integrator: ChemStation

Volume Inj. : 1 ul
 Signal Phase : Rxi-1ms
 Signal Info : 20M x 0.18mm x 0.18um

Compound	R.T.	Response	Conc Units

System Monitoring Compounds			
9) S ortho-Terphenyl (SURR)	11.570	341091	2.418 ug/ml
Spiked Amount	50.000	Recovery	= 4.84%
12) S 1-chlorooctadecane (S...	13.013	4904861	46.019 ug/ml
Spiked Amount	50.000	Recovery	= 92.04%
Target Compounds			
4) T n-Dodecane (C12)	6.414	97197	0.776 ug/ml
6) T n-Tetradecane (C14)	8.211	38245	0.314 ug/ml

(f)=RT Delta > 1/2 Window

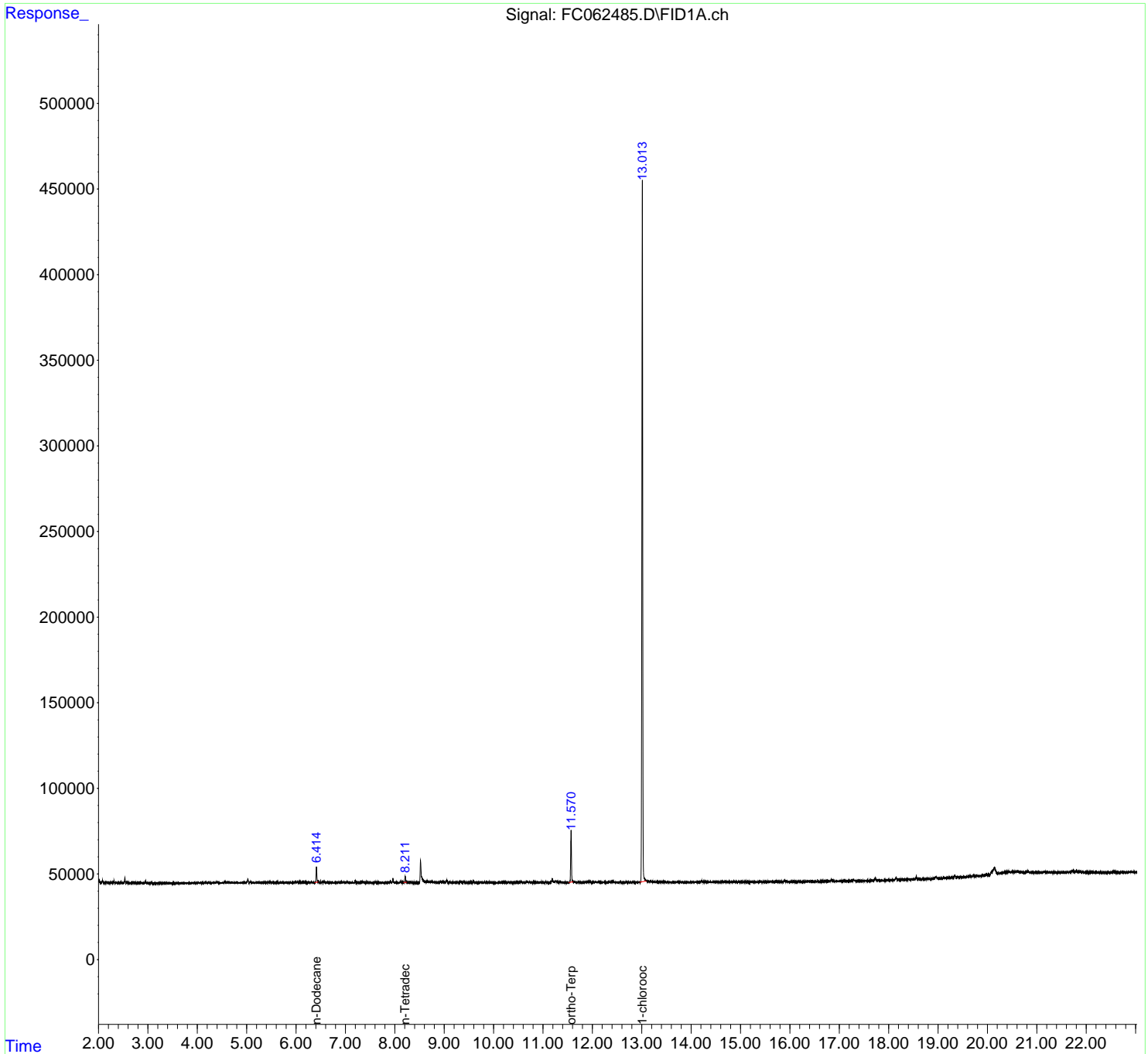
(m)=manual int.

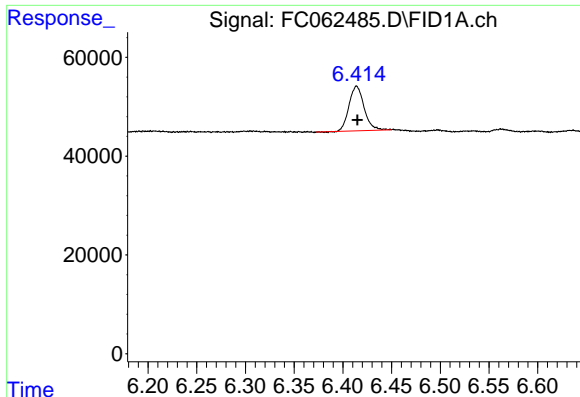
Data Path : Z:\pestpcbsrv\HPCHEM1\FID_C\Data\FC122322AL\
Data File : FC062485.D
Signal(s) : FID1A.ch
Acq On : 23 Dec 2022 18:18
Operator : YP/AJ
Sample : N6152-01
Misc :
ALS Vial : 8 Sample Multiplier: 1

Instrument :
FID_C
ClientSampleId :

Integration File: autoint1.e
Quant Time: Dec 25 11:51:20 2022
Quant Method : Z:\pestpcbsrv\HPCHEM1\FID_C\Method\Aliphatic EPH 120722.M
Quant Title : GC Extractables
QLast Update : Thu Dec 08 01:05:24 2022
Response via : Initial Calibration
Integrator: ChemStation

Volume Inj. : 1 ul
Signal Phase : Rxi-1ms
Signal Info : 20M x 0.18mm x 0.18um

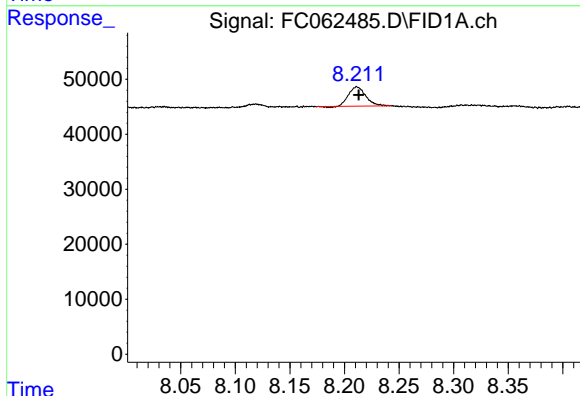




#4 n-Dodecane (C12)

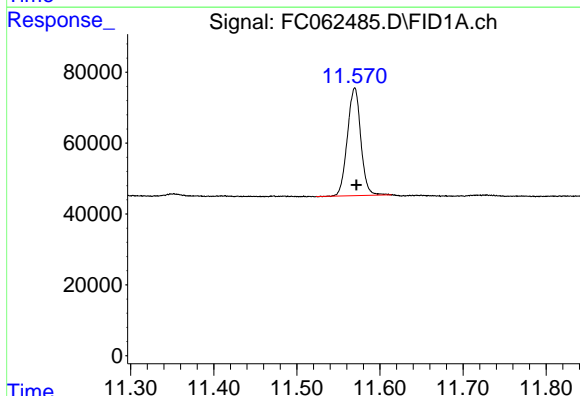
R.T.: 6.414 min
 Delta R.T.: -0.001 min
 Response: 97197
 Conc: 0.78 ug/ml

Instrument :
 FID_C
 ClientSampleId :



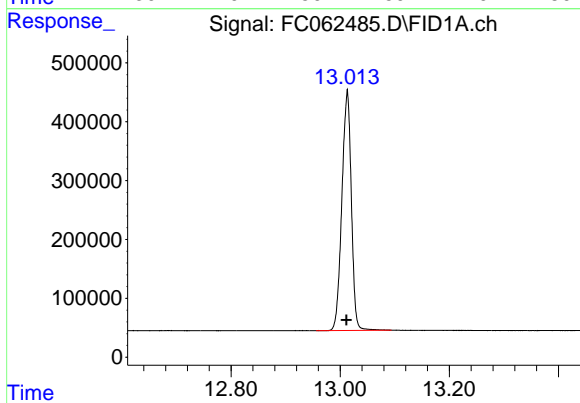
#6 n-Tetradecane (C14)

R.T.: 8.211 min
 Delta R.T.: -0.002 min
 Response: 38245
 Conc: 0.31 ug/ml



#9 ortho-Terphenyl (SURR)

R.T.: 11.570 min
 Delta R.T.: -0.002 min
 Response: 341091
 Conc: 2.42 ug/ml



#12 1-chlorooctadecane (SURR)

R.T.: 13.013 min
 Delta R.T.: 0.002 min
 Response: 4904861
 Conc: 46.02 ug/ml