

Data Path : Z:\pestpcbsrv\HPCHEM1\FID\_C\Data\FC122420AL\  
 Data File : FC051469.D  
 Signal(s) : FID1A.CH  
 Acq On : 24 Dec 2020 23:56  
 Operator : DD\AJ  
 Sample : L5197-01DL 5X  
 Misc :  
 ALS Vial : 18 Sample Multiplier: 1

Integration File: sample.E  
 Quant Time: Dec 25 01:45:12 2020  
 Quant Method : Z:\pestpcbsrv\HPCHEM1\FID\_C\Method\Alaphatic EPH 122120.M  
 Quant Title : GC Extractables  
 QLast Update : Tue Dec 22 00:33:00 2020  
 Response via : Initial Calibration  
 Integrator: ChemStation 6890 Scale Mode: Large solvent peaks clipped

Volume Inj. : 1 ul  
 Signal Phase : Rxi-1ms  
 Signal Info : 20M x 0.18mm x 0.18um

Compound	R.T.	Response	Conc Units
-----			
System Monitoring Compounds			
9) S ortho-Terphenyl (SURR)	11.568	626501	5.406 ug/ml
Spiked Amount	50.000	Recovery	= 10.81%
12) S 1-chlorooctadecane (S...	13.002	752385	8.340 ug/ml
Spiked Amount	50.000	Recovery	= 16.68%

Target Compounds

-----

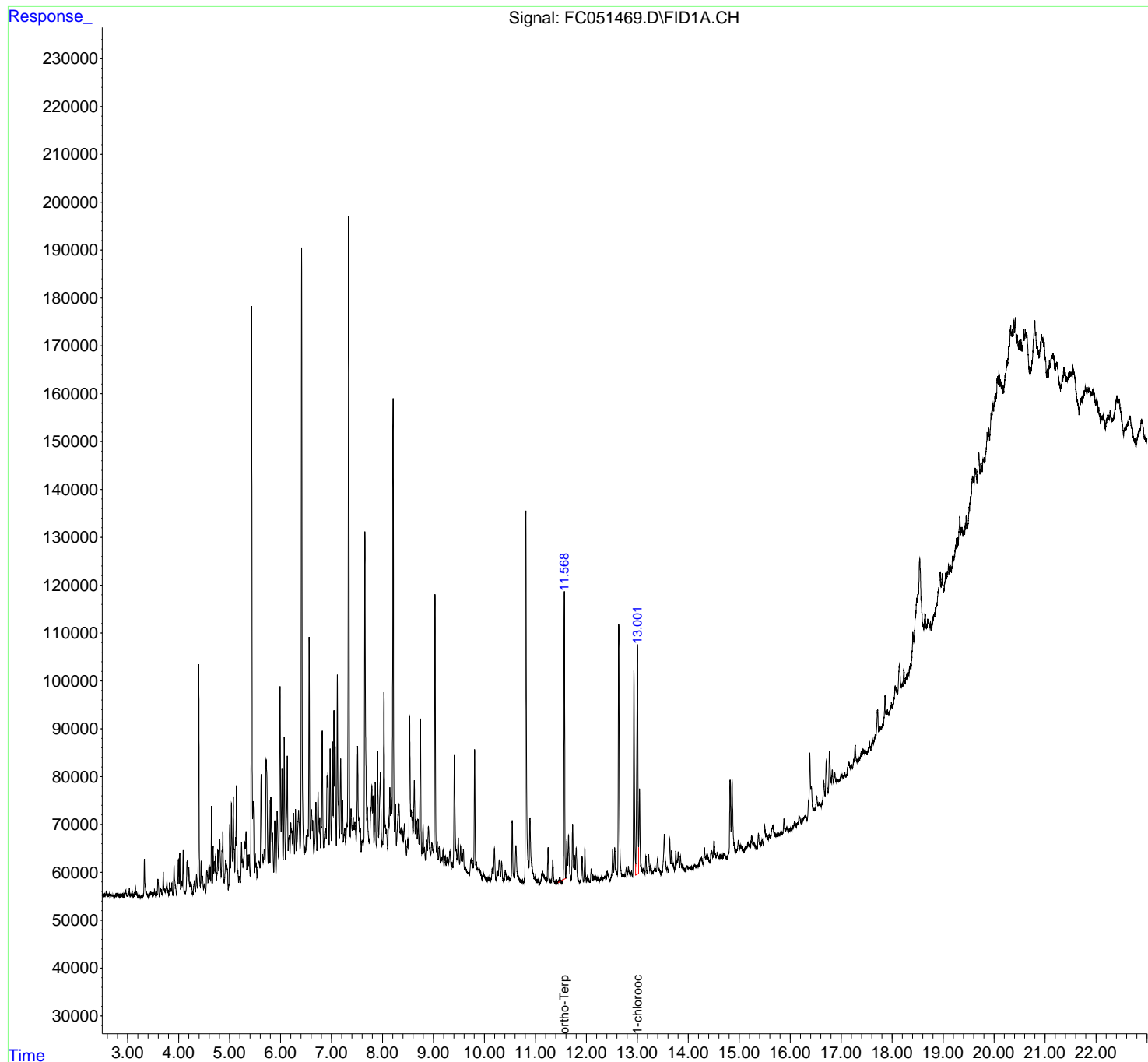
(f)=RT Delta > 1/2 Window

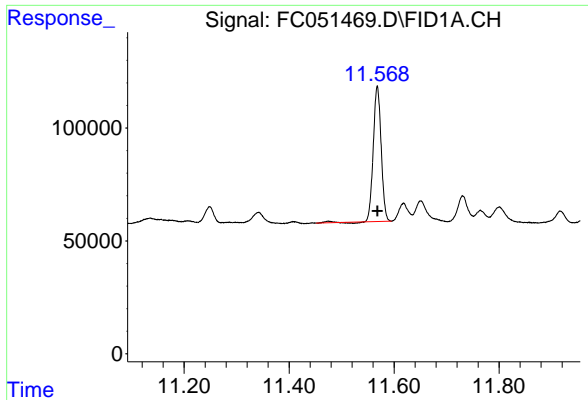
(m)=manual int.

Data Path : Z:\pestpcbsrv\HPCHEM1\FID\_C\Data\FC122420AL\  
Data File : FC051469.D  
Signal(s) : FID1A.CH  
Acq On : 24 Dec 2020 23:56  
Operator : DD\AJ  
Sample : L5197-01DL 5X  
Misc :  
ALS Vial : 18 Sample Multiplier: 1

Integration File: sample.E  
Quant Time: Dec 25 01:45:12 2020  
Quant Method : Z:\pestpcbsrv\HPCHEM1\FID\_C\Method\Alaphatic EPH 122120.M  
Quant Title : GC Extractables  
QLast Update : Tue Dec 22 00:33:00 2020  
Response via : Initial Calibration  
Integrator: ChemStation 6890 Scale Mode: Large solvent peaks clipped

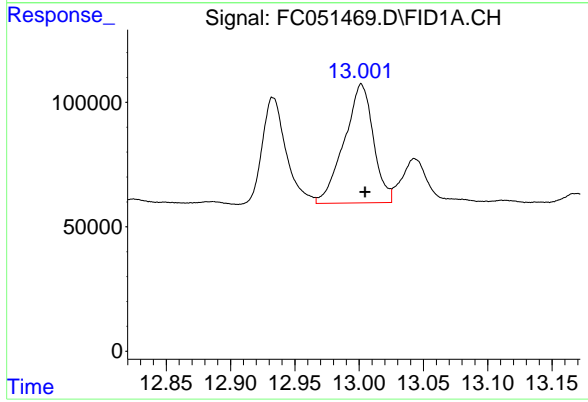
Volume Inj. : 1 ul  
Signal Phase : Rxi-1ms  
Signal Info : 20M x 0.18mm x 0.18um





#9 ortho-Terphenyl (SURR)

R.T.: 11.568 min  
Delta R.T.: 0.000 min  
Response: 626501  
Conc: 5.41 ug/ml



#12 1-chlorooctadecane (SURR)

R.T.: 13.002 min  
Delta R.T.: -0.003 min  
Response: 752385  
Conc: 8.34 ug/ml