

Data Path : P:\HPCHEM1\FID C\Data\FC052418AL\
 Data File : FC034314.D
 Signal(s) : FID1A.CH
 Acq On : 25 May 2018 12:33
 Operator : UA/AJ
 Sample : J3060-15
 Misc :
 ALS Vial : 73 Sample Multiplier: 1

Instrument :
 FID_C
 ClientSampleId :

Integration File: autoint1.e
 Quant Time: May 25 14:58:00 2018
 Quant Method : \\74.0.250.170\pestpcbsrv\HPCHEM1\FID_C\Method\Alaphatic EPH 052418.M
 Quant Title : GC Extractables
 QLast Update : Fri May 25 02:29:20 2018
 Response via : Initial Calibration
 Integrator: ChemStation 6890 Scale Mode: Large solvent peaks clipped

Volume Inj. : 1 ul
 Signal Phase : Rxi-lms
 Signal Info : 20M x 0.18mm x 0.18um

Compound	R.T.	Response	Conc Units

System Monitoring Compounds			
12) S 1-chlorooctadecane (S...	12.927	3171054	26.746 ug/ml
Spiked Amount	50.000	Recovery =	53.49%

Target Compounds

(f)=RT Delta > 1/2 Window

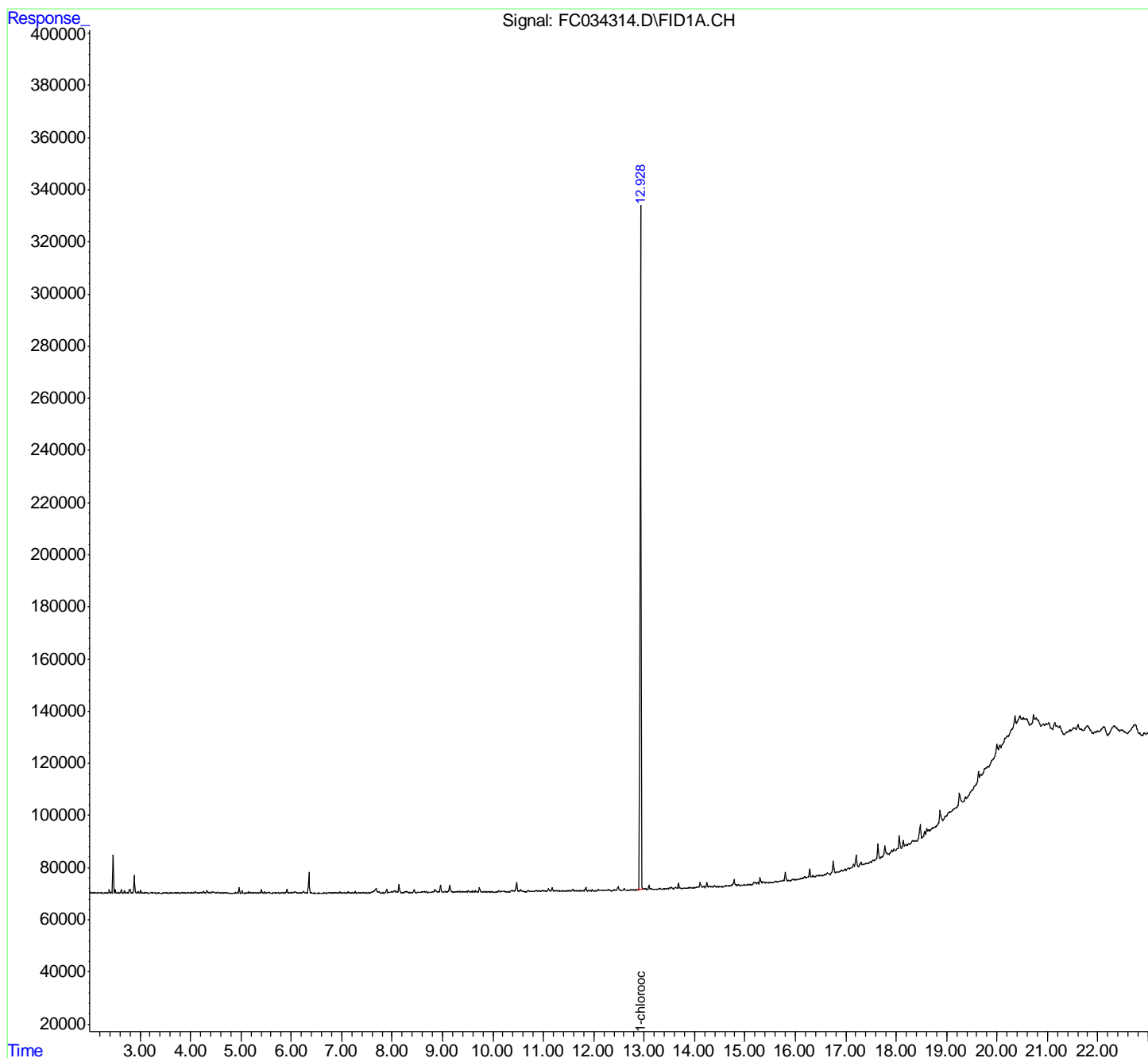
(m)=manual int.

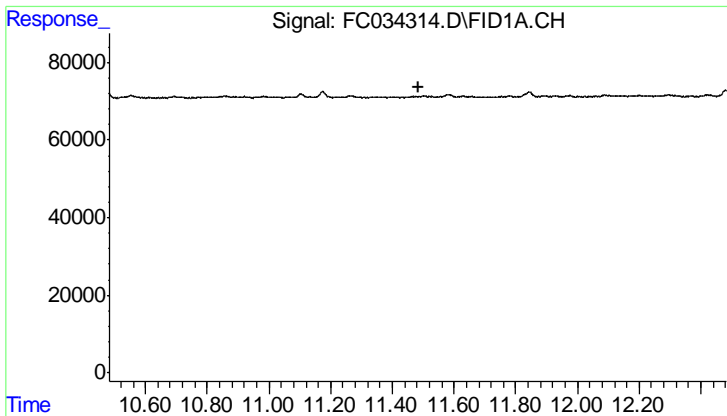
Data Path : P:\HPCHEM1\FID C\Data\FC052418AL\
 Data File : FC034314.D
 Signal(s) : FID1A.CH
 Acq On : 25 May 2018 12:33
 Operator : UA/AJ
 Sample : J3060-15
 Misc :
 ALS Vial : 73 Sample Multiplier: 1

Instrument :
 FID_C
 ClientSampleId :

Integration File: autoint1.e
 Quant Time: May 25 14:58:00 2018
 Quant Method : \\74.0.250.170\pestpcbsrv\HPCHEM1\FID_C\Method\Alaphatic EPH 052418.M
 Quant Title : GC Extractables
 QLast Update : Fri May 25 02:29:20 2018
 Response via : Initial Calibration
 Integrator: ChemStation 6890 Scale Mode: Large solvent peaks clipped

Volume Inj. : 1 ul
 Signal Phase : Rxi-lms
 Signal Info : 20M x 0.18mm x 0.18um

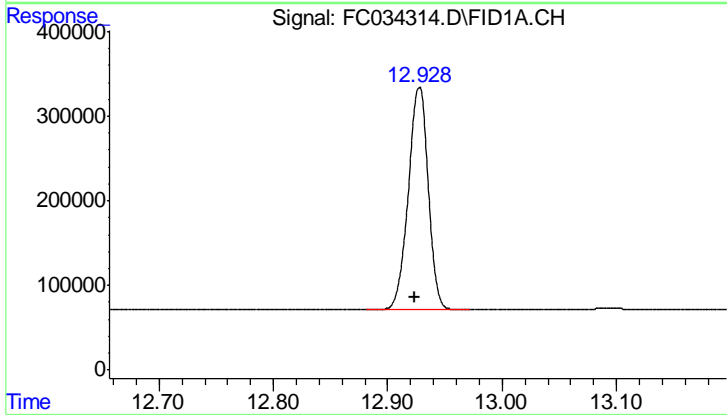




#9 ortho-Terphenyl (SURR)

R.T.: 0.000 min
Exp R.T.: 11.483 min
Response: 0
Conc: N.D.

Instrument :
FID_C
ClientSampleId :



#12 1-chlorooctadecane (SURR)

R.T.: 12.927 min
Delta R.T.: 0.004 min
Response: 3171054
Conc: 26.75 ug/ml