

Data Path : Z:\pestpcbsrv\HPCHEM1\FID C\Data\FC061518AL\  
 Data File : FC034736.D  
 Signal(s) : FID1A.CH  
 Acq On : 15 Jun 2018 17:39  
 Operator : UA/AJ  
 Sample : 20 PPM ALIPHATIC HC STD  
 Misc :  
 ALS Vial : 2 Sample Multiplier: 1

Integration File: sample.E  
 Quant Time: Jun 16 06:44:46 2018  
 Quant Method : Z:\PESTPCBSRV\HPCHEM1\FID\_C\Method\Aliphatic EPH 052418.M  
 Quant Title : GC Extractables  
 QLast Update : Fri May 25 02:29:20 2018  
 Response via : Initial Calibration  
 Integrator: ChemStation 6890 Scale Mode: Large solvent peaks clipped

Volume Inj. : 1 ul  
 Signal Phase : Rxi-lms  
 Signal Info : 20M x 0.18mm x 0.18um

Compound	R.T.	Response	Conc Units
-----			
System Monitoring Compounds			
9) S ortho-Terphenyl (SURR)	11.470	2897006	19.226 ug/ml
Spiked Amount	50.000	Recovery =	38.45%
12) S 1-chlorooctadecane (S...	12.910	2259281	19.056 ug/ml
Spiked Amount	50.000	Recovery =	38.11%
Target Compounds			
1) T n-Nonane (C9)	3.250	2074779	17.222 ug/ml
2) T n-Decane (C10)	4.320	2172411	17.544 ug/ml
3) T A-Naphthalene (C11.7)	5.899	2657171	17.873 ug/ml
4) T n-Dodecane (C12)	6.337	2361642	17.857 ug/ml
5) T A-2-methylnaphthalene...	6.953	2776011	18.151 ug/ml
6) T n-Tetradecane (C14)	8.127	2533913	18.073 ug/ml
7) T n-Hexadecane (C16)	9.723	2614975	18.191 ug/ml
8) T n-Octadecane (C18)	11.161	2609284	18.465 ug/ml
10) T n-Eicosane (C20)	12.468	2670127	18.702 ug/ml
11) T n-Heneicosane (C21)	13.079	2659928	18.920 ug/ml
13) T n-Docosane (C22)	13.664	2674009	19.149 ug/ml
14) T n-Tetracosane (C24)	14.765	2658496	19.794 ug/ml
15) T n-Hexacosane (C26)	15.785	2665669	20.580 ug/ml
16) T n-Octacosane (C28)	16.734	2731780	21.426 ug/ml
17) T n-Tricontane (C30)	17.622	2714041	22.194 ug/ml
18) T n-Dotriacontane (C32)	18.454	2707972	22.548 ug/ml
19) T n-Tetratriacontane (C34)	19.236	2633816	22.869 ug/ml
20) T n-Hexatriacontane (C36)	19.977	2533317	22.007 ug/mlm
21) T n-Octatriacontane (C38)	20.698	2459535	22.115 ug/ml
22) T n-Tetracontane (C40)	21.571	2477885	21.346 ug/ml
-----			

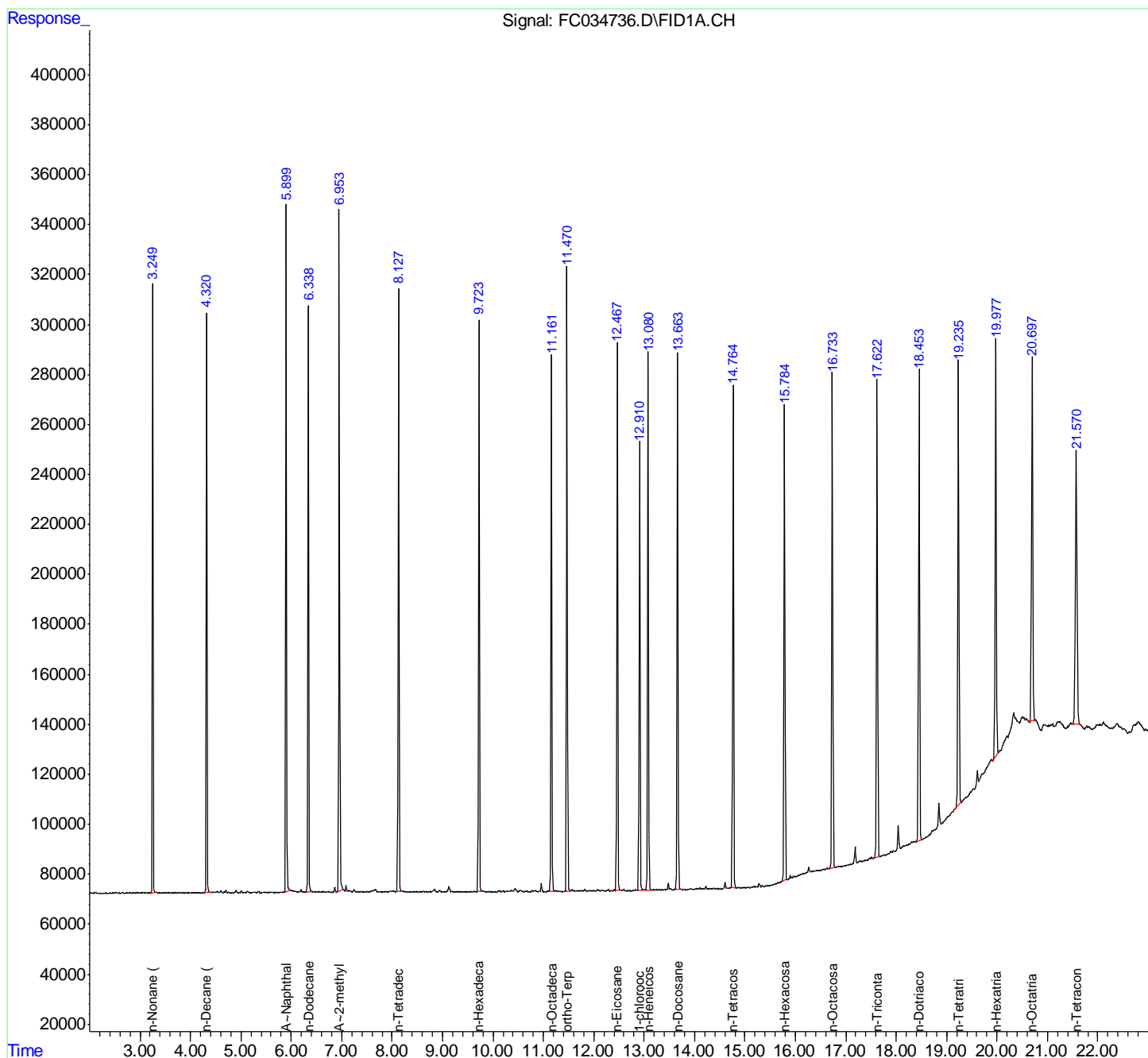
(f)=RT Delta > 1/2 Window

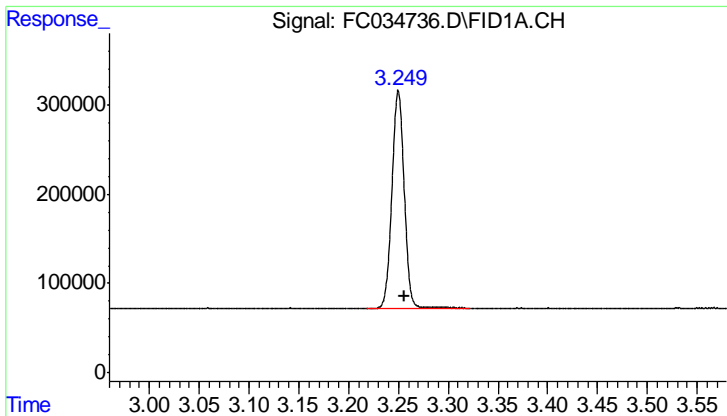
(m)=manual int.

Data Path : Z:\pestpcbsrv\HPCHEM1\FID C\Data\FC061518AL\  
 Data File : FC034736.D  
 Signal(s) : FID1A.CH  
 Acq On : 15 Jun 2018 17:39  
 Operator : UA/AJ  
 Sample : 20 PPM ALIPHATIC HC STD  
 Misc :  
 ALS Vial : 2 Sample Multiplier: 1

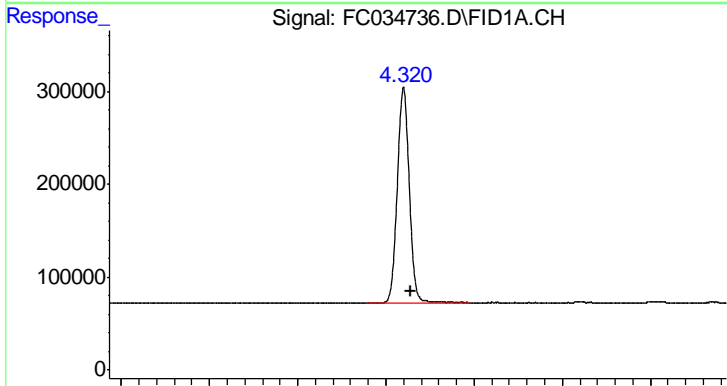
Integration File: sample.E  
 Quant Time: Jun 16 06:44:46 2018  
 Quant Method : Z:\PESTPCBSRV\HPCHEM1\FID\_C\Method\Alaphatic EPH 052418.M  
 Quant Title : GC Extractables  
 QLast Update : Fri May 25 02:29:20 2018  
 Response via : Initial Calibration  
 Integrator: ChemStation 6890 Scale Mode: Large solvent peaks clipped

Volume Inj. : 1 ul  
 Signal Phase : Rxi-lms  
 Signal Info : 20M x 0.18mm x 0.18um

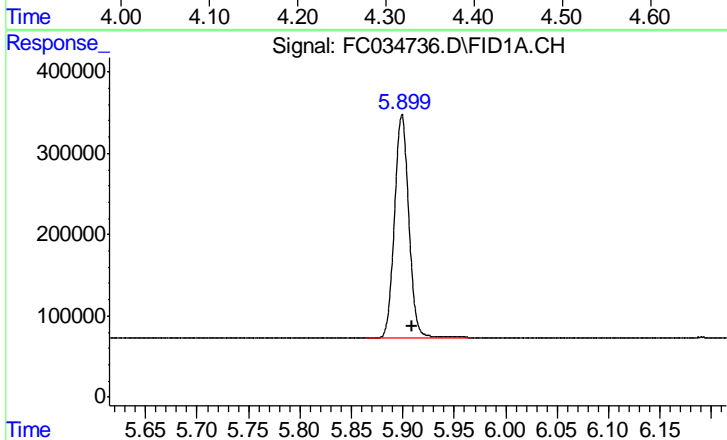




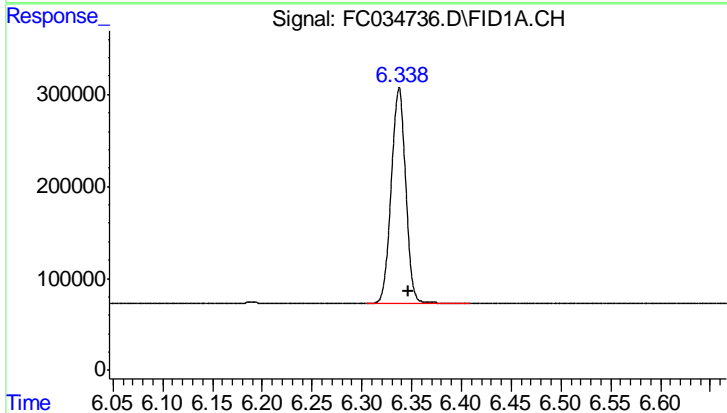
#1 n-Nonane (C9)  
R.T.: 3.250 min  
Delta R.T.: -0.006 min  
Response: 2074779  
Conc: 17.22 ug/ml



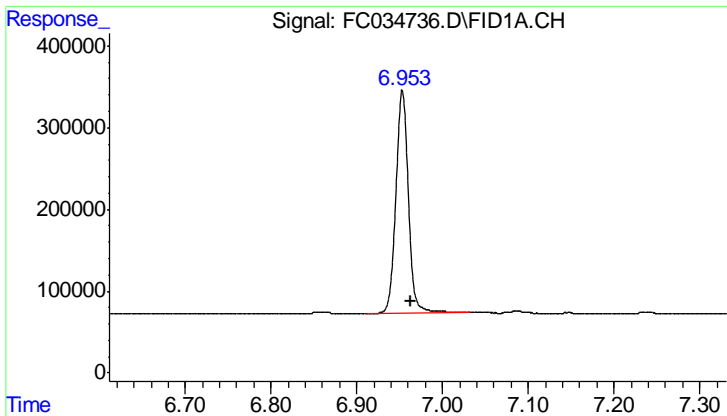
#2 n-Decane (C10)  
R.T.: 4.320 min  
Delta R.T.: -0.008 min  
Response: 2172411  
Conc: 17.54 ug/ml



#3 A~Naphthalene (C11.7)  
R.T.: 5.899 min  
Delta R.T.: -0.010 min  
Response: 2657171  
Conc: 17.87 ug/ml

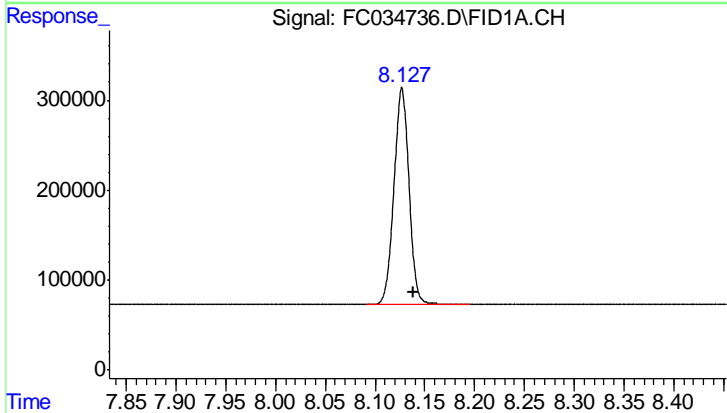


#4 n-Dodecane (C12)  
R.T.: 6.337 min  
Delta R.T.: -0.010 min  
Response: 2361642  
Conc: 17.86 ug/ml



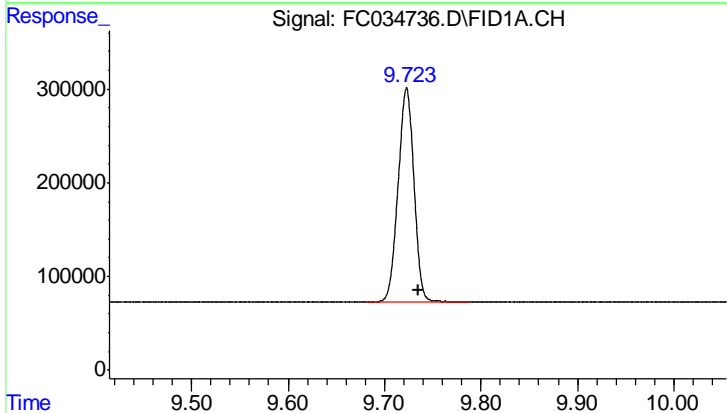
#5 A~2-methylnaphthalene (C12.89)

R.T.: 6.953 min  
 Delta R.T.: -0.009 min  
 Response: 2776011  
 Conc: 18.15 ug/ml



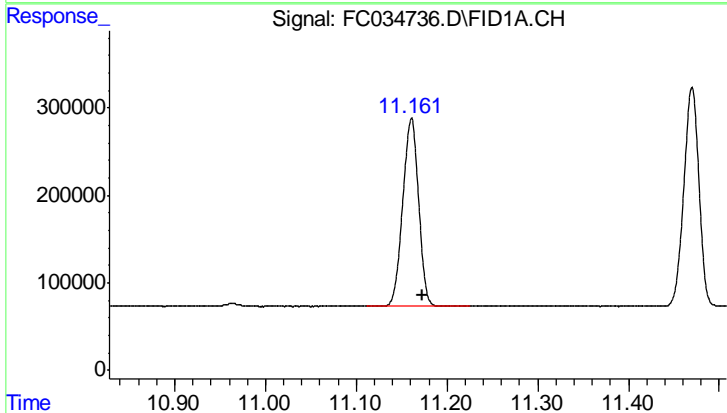
#6 n-Tetradecane (C14)

R.T.: 8.127 min  
 Delta R.T.: -0.011 min  
 Response: 2533913  
 Conc: 18.07 ug/ml



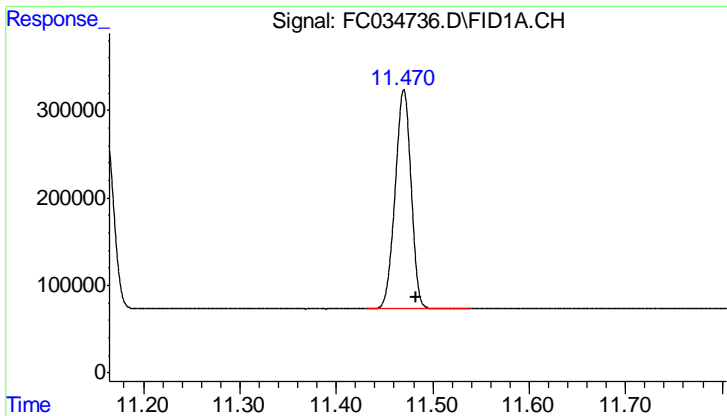
#7 n-Hexadecane (C16)

R.T.: 9.723 min  
 Delta R.T.: -0.012 min  
 Response: 2614975  
 Conc: 18.19 ug/ml



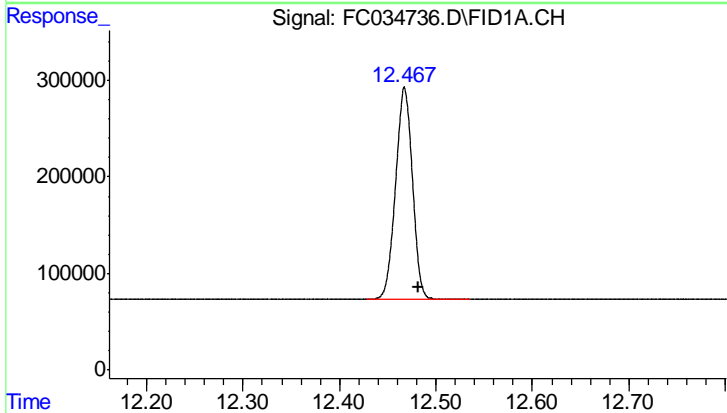
#8 n-Octadecane (C18)

R.T.: 11.161 min  
 Delta R.T.: -0.013 min  
 Response: 2609284  
 Conc: 18.46 ug/ml



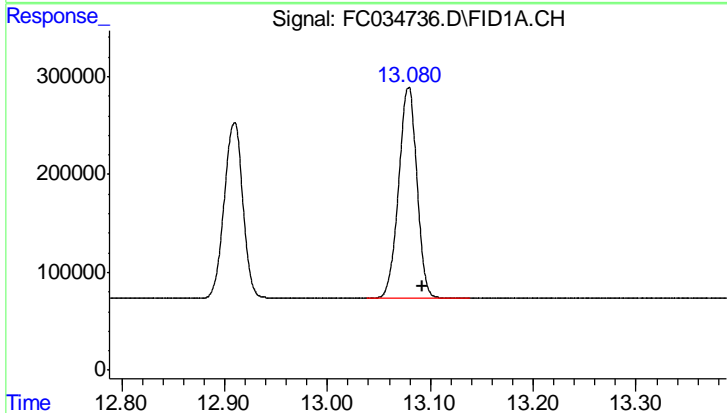
#9 ortho-Terphenyl (SURR)

R.T.: 11.470 min  
Delta R.T.: -0.013 min  
Response: 2897006  
Conc: 19.23 ug/ml



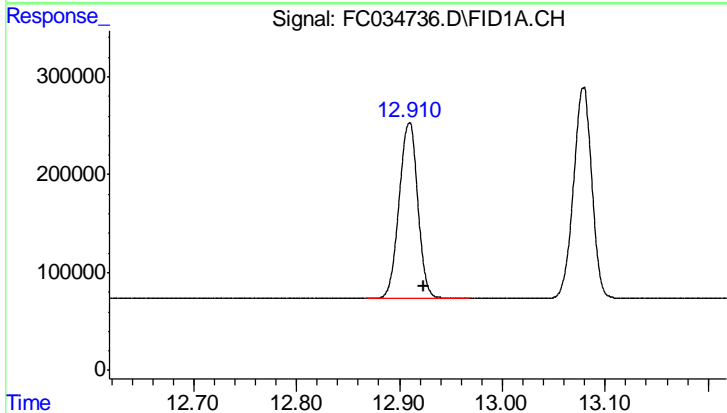
#10 n-Eicosane (C20)

R.T.: 12.468 min  
Delta R.T.: -0.015 min  
Response: 2670127  
Conc: 18.70 ug/ml



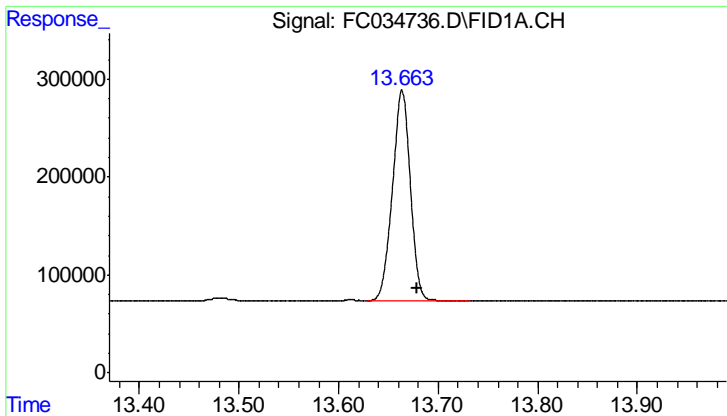
#11 n-Heneicosane (C21)

R.T.: 13.079 min  
Delta R.T.: -0.014 min  
Response: 2659928  
Conc: 18.92 ug/ml

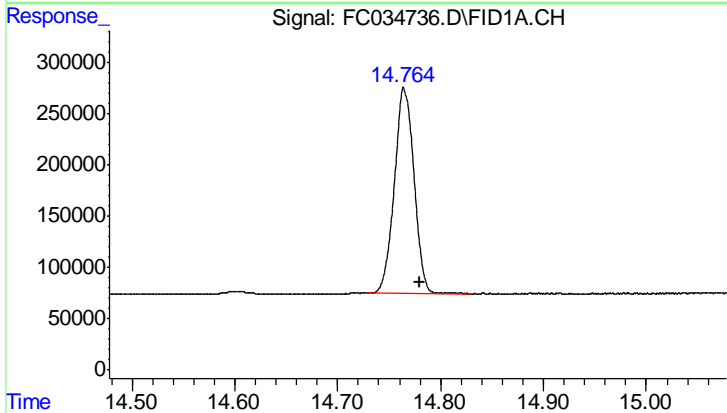


#12 1-chlorooctadecane (SURR)

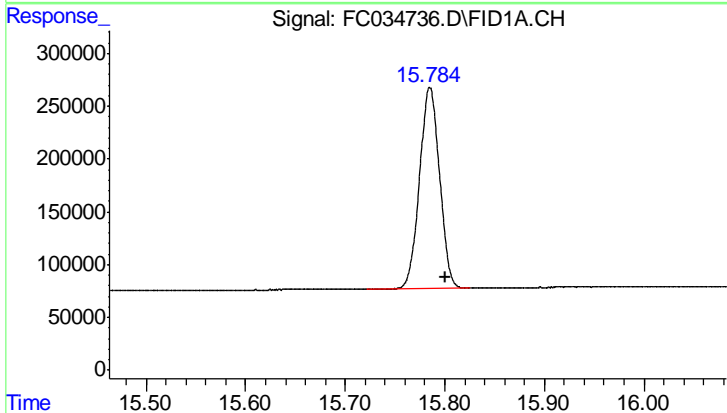
R.T.: 12.910 min  
Delta R.T.: -0.014 min  
Response: 2259281  
Conc: 19.06 ug/ml



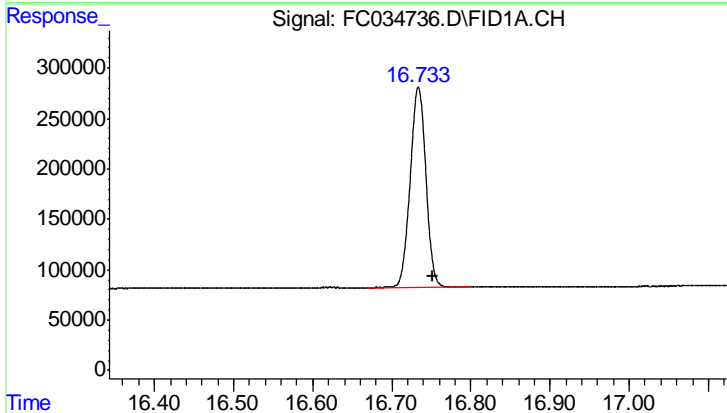
#13 n-Docosane (C22)  
R.T.: 13.664 min  
Delta R.T.: -0.016 min  
Response: 2674009  
Conc: 19.15 ug/ml



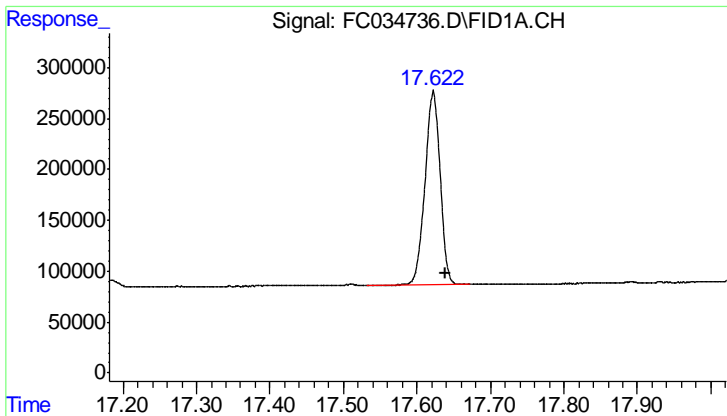
#14 n-Tetracosane (C24)  
R.T.: 14.765 min  
Delta R.T.: -0.015 min  
Response: 2658496  
Conc: 19.79 ug/ml



#15 n-Hexacosane (C26)  
R.T.: 15.785 min  
Delta R.T.: -0.015 min  
Response: 2665669  
Conc: 20.58 ug/ml

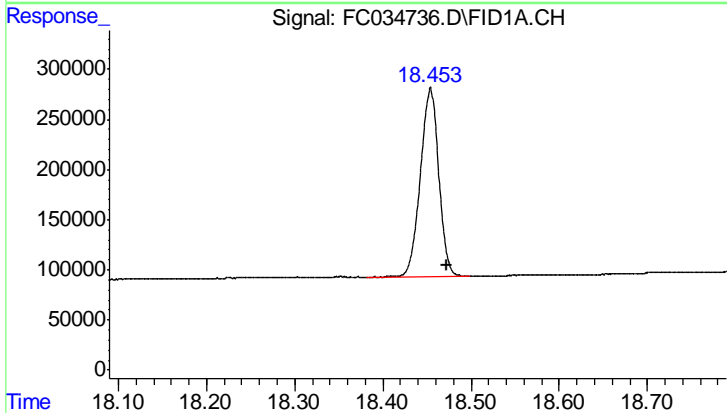


#16 n-Octacosane (C28)  
R.T.: 16.734 min  
Delta R.T.: -0.018 min  
Response: 2731780  
Conc: 21.43 ug/ml



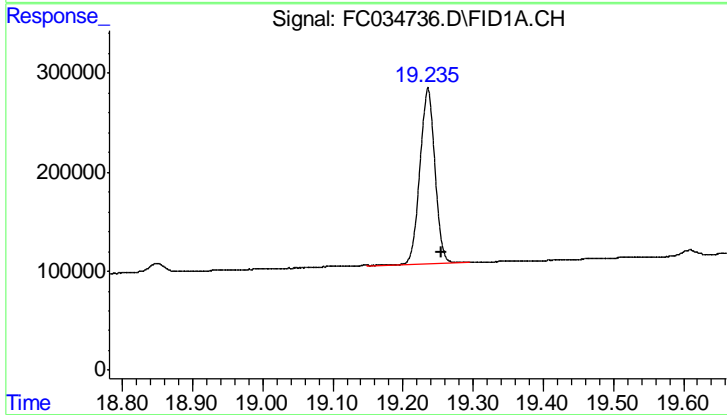
#17 n-Tricontane (C30)

R.T.: 17.622 min  
Delta R.T.: -0.017 min  
Response: 2714041  
Conc: 22.19 ug/ml



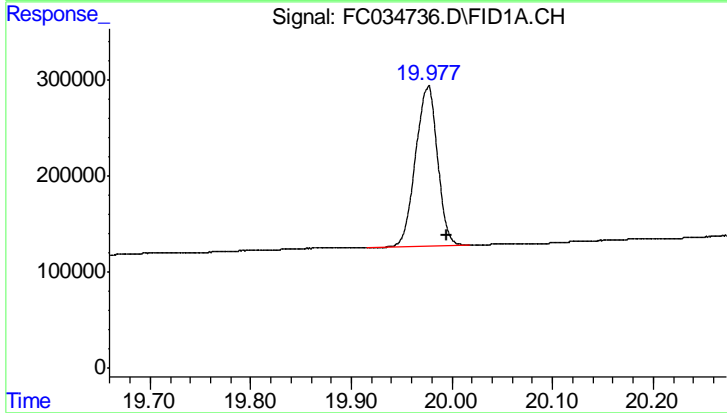
#18 n-Dotriacontane (C32)

R.T.: 18.454 min  
Delta R.T.: -0.018 min  
Response: 2707972  
Conc: 22.55 ug/ml



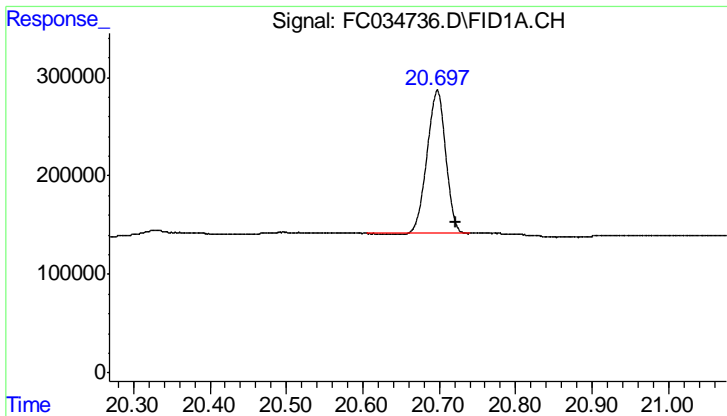
#19 n-Tetratriacontane (C34)

R.T.: 19.236 min  
Delta R.T.: -0.020 min  
Response: 2633816  
Conc: 22.87 ug/ml



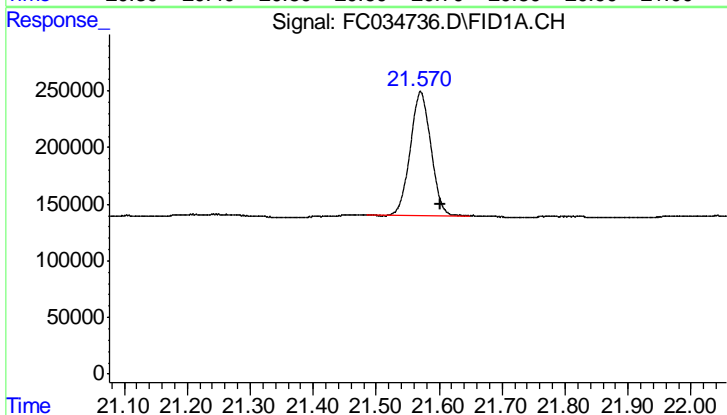
#20 n-Hexatriacontane (C36)

R.T.: 19.977 min  
Delta R.T.: -0.018 min  
Response: 2533317  
Conc: 22.01 ug/ml m



#21 n-Octatriacontane (C38)

R.T.: 20.698 min  
Delta R.T.: -0.024 min  
Response: 2459535  
Conc: 22.11 ug/ml



#22 n-Tetracontane (C40)

R.T.: 21.571 min  
Delta R.T.: -0.031 min  
Response: 2477885  
Conc: 21.35 ug/ml