

Data Path : Z:\pestpcbsrv\HPCHEM1\FID\_C\Data\FC061918AL\  
 Data File : FC034838.D  
 Signal(s) : FID1A.CH  
 Acq On : 20 Jun 2018 21:20  
 Operator : UA/AJ  
 Sample : J3584-01  
 Misc :  
 ALS Vial : 9 Sample Multiplier: 1

Integration File: sample.E  
 Quant Time: Jun 21 02:16:22 2018  
 Quant Method : Z:\PESTPCBSRV\HPCHEM1\FID\_C\Method\Alaphatic EPH 052418.M  
 Quant Title : GC Extractables  
 QLast Update : Fri May 25 02:29:20 2018  
 Response via : Initial Calibration  
 Integrator: ChemStation 6890 Scale Mode: Large solvent peaks clipped

Volume Inj. : 1 ul  
 Signal Phase : Rxi-lms  
 Signal Info : 20M x 0.18mm x 0.18um

Compound	R.T.	Response	Conc Units
-----			
System Monitoring Compounds			
12) S 1-chlorooctadecane (S...	12.902	1861886	15.704 ug/ml
Spiked Amount	50.000	Recovery	= 31.41%

Target Compounds

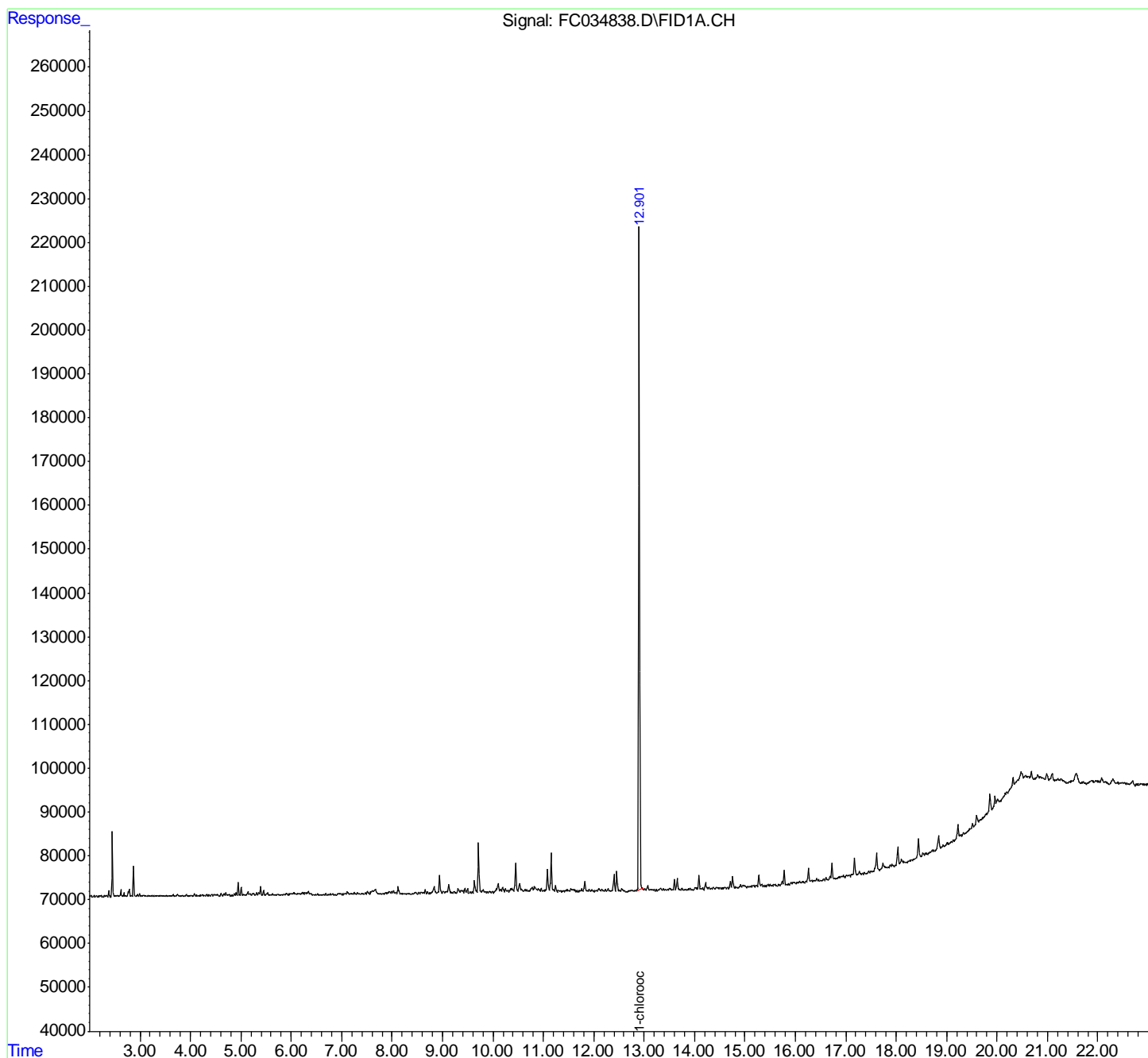
(f)=RT Delta > 1/2 Window

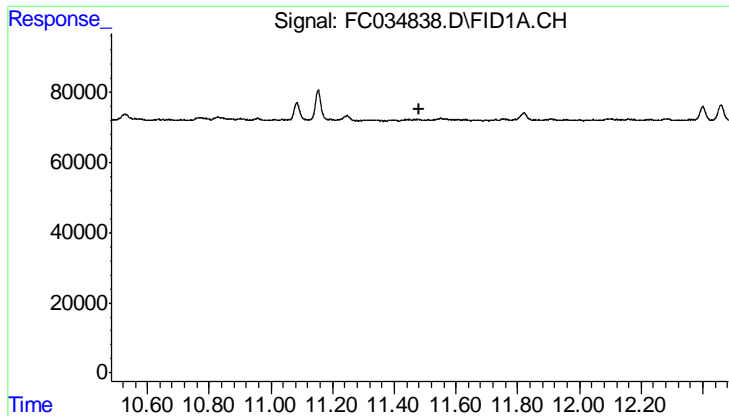
(m)=manual int.

Data Path : Z:\pestpcbsrv\HPCHEM1\FID\_C\Data\FC061918AL\  
 Data File : FC034838.D  
 Signal(s) : FID1A.CH  
 Acq On : 20 Jun 2018 21:20  
 Operator : UA/AJ  
 Sample : J3584-01  
 Misc :  
 ALS Vial : 9 Sample Multiplier: 1

Integration File: sample.E  
 Quant Time: Jun 21 02:16:22 2018  
 Quant Method : Z:\PESTPCBSRV\HPCHEM1\FID\_C\Method\Alaphatic EPH 052418.M  
 Quant Title : GC Extractables  
 QLast Update : Fri May 25 02:29:20 2018  
 Response via : Initial Calibration  
 Integrator: ChemStation 6890 Scale Mode: Large solvent peaks clipped

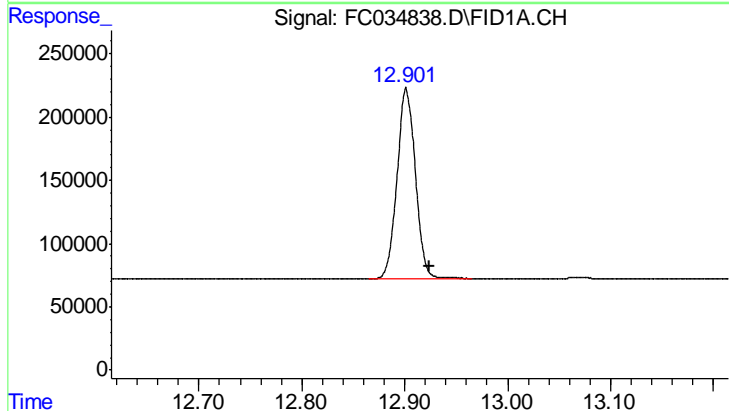
Volume Inj. : 1 ul  
 Signal Phase : Rxi-lms  
 Signal Info : 20M x 0.18mm x 0.18um





#9 ortho-Terphenyl (SURR)

R.T.: 0.000 min  
 Exp R.T.: 11.483 min  
 Response: 0  
 Conc: N.D.



#12 1-chlorooctadecane (SURR)

R.T.: 12.902 min  
 Delta R.T.: -0.022 min  
 Response: 1861886  
 Conc: 15.70 ug/ml