

Data Path : Z:\pestpcbsrv\HPCHEM1\FID_D\Data\FD010521AR\
 Data File : FD035890.D
 Signal(s) : FID2B.CH
 Acq On : 05 Jan 2021 15:00
 Operator : DD\AJ
 Sample : L5246-06DL 5X
 Misc :
 ALS Vial : 60 Sample Multiplier: 1

Instrument :
 FID_D
 ClientSampleId :

Integration File: autoint1.e
 Quant Time: Jan 06 08:22:42 2021
 Quant Method : Z:\pestpcbsrv\HPCHEM1\FID_D\methods\Aromatic EPH 122120.M
 Quant Title : GC Extractables
 QLast Update : Tue Dec 22 09:21:33 2020
 Response via : Initial Calibration
 Integrator: ChemStation 6890 Scale Mode: Large solvent peaks clipped

Volume Inj. : 1 µl
 Signal Phase : Rxi-1ms
 Signal Info : 20M x 0.18mm x 0.18µm

| Compound | R.T. | Response | Conc Units |
|--------------------------------|----------------------|----------|--------------|
| ----- | | | |
| System Monitoring Compounds | | | |
| 4) S 2-Bromonaphthalene (S...) | 7.584 | 1174262 | 10.760 ug/ml |
| Spiked Amount | 50.000 | Recovery | = 21.52% |
| 6) S 2-Fluorobiphenyl (SURR) | 8.457 | 872291 | 12.564 ug/ml |
| Spiked Amount | 50.000 Range 0 - 131 | Recovery | = 25.13% |
| 11) S ortho-Terphenyl (SURR) | 11.477 | 1083159 | 8.380 ug/ml |
| Spiked Amount | 50.000 | Recovery | = 16.76% |
| Target Compounds | | | |
| 3) T 2-Methylnaphthalene (...) | 6.978 | 149161 | 1.179 ug/ml |
| 5) T Acenaphthylene (C15.06) | 8.298 | 140424 | 1.110 ug/ml |
| 7) T Acenaphthene (C15.5) | 8.572 | 264687 | 1.951 ug/ml |
| 8) T Fluorene (C16.55) | 9.404f | 541271 | 4.407 ug/ml |
| 13) T Pyrene (C20.8) | 12.909f | 123904 | 1.013 ug/ml |
| ----- | | | |

(f)=RT Delta > 1/2 Window

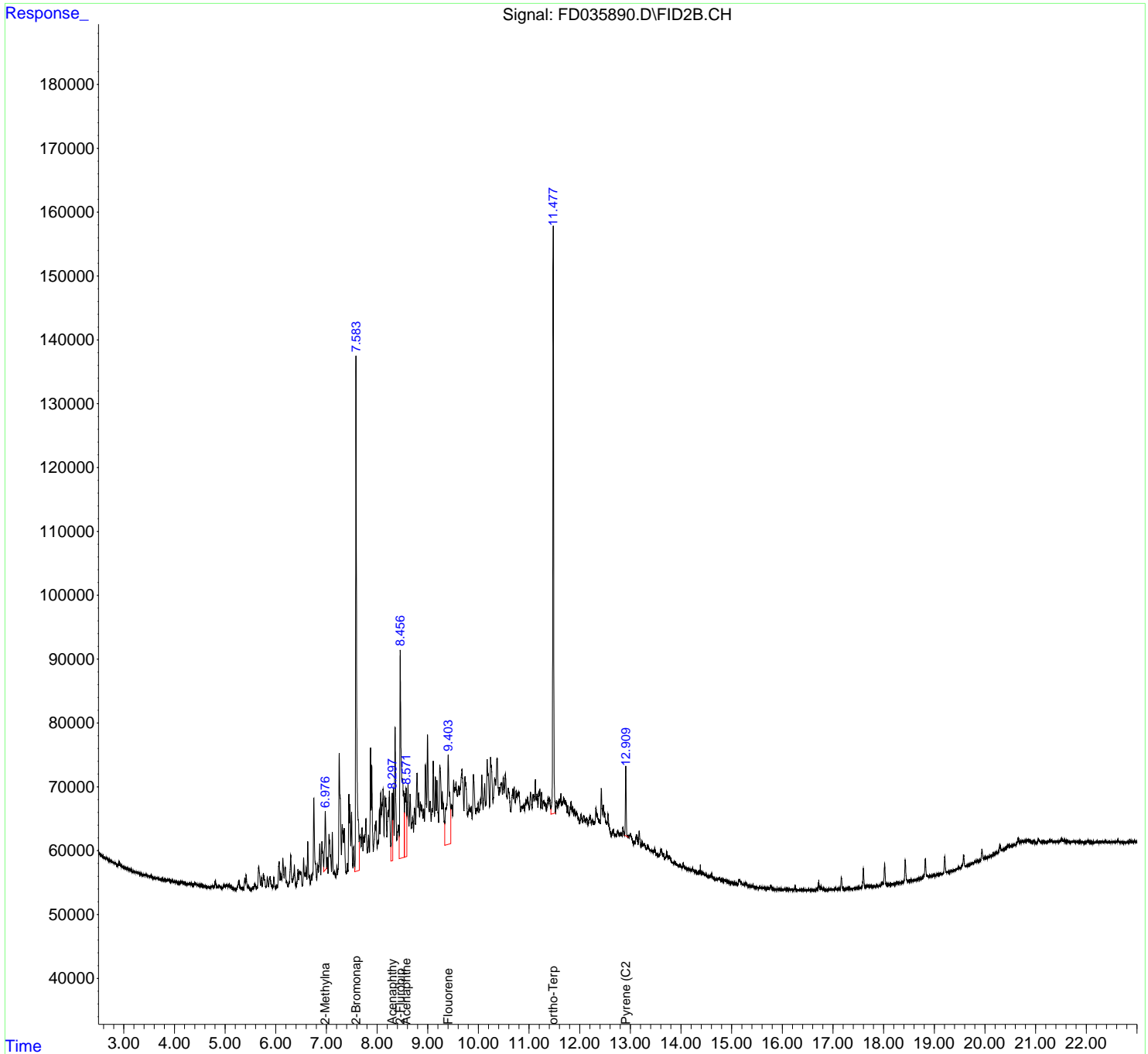
(m)=manual int.

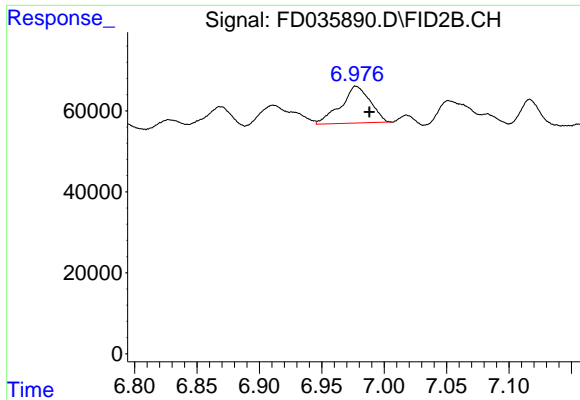
Data Path : Z:\pestpcbsrv\HPCHEM1\FID_D\Data\FD010521AR\
 Data File : FD035890.D
 Signal(s) : FID2B.CH
 Acq On : 05 Jan 2021 15:00
 Operator : DD\AJ
 Sample : L5246-06DL 5X
 Misc :
 ALS Vial : 60 Sample Multiplier: 1

Instrument :
 FID_D
 ClientSampleId :

Integration File: autoint1.e
 Quant Time: Jan 06 08:22:42 2021
 Quant Method : Z:\pestpcbsrv\HPCHEM1\FID_D\methods\Aromatic EPH 122120.M
 Quant Title : GC Extractables
 QLast Update : Tue Dec 22 09:21:33 2020
 Response via : Initial Calibration
 Integrator: ChemStation 6890 Scale Mode: Large solvent peaks clipped

Volume Inj. : 1 µl
 Signal Phase : Rxi-1ms
 Signal Info : 20M x 0.18mm x 0.18µm

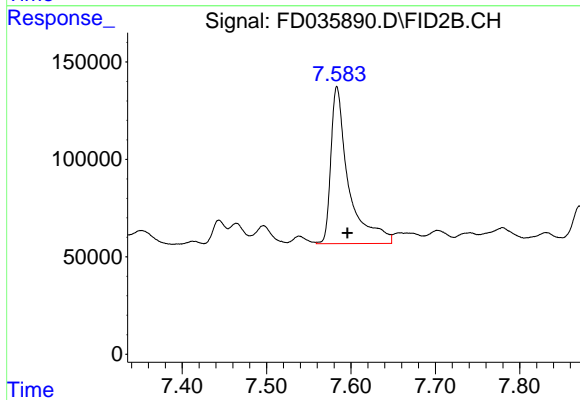




#3 2-Methylnaphthalene (C12.89)

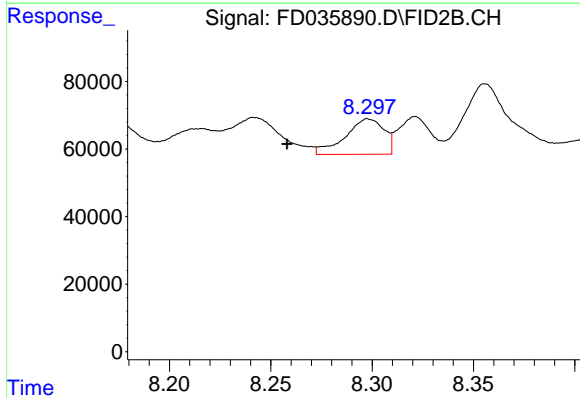
R.T.: 6.978 min
 Delta R.T.: -0.010 min
 Response: 149161
 Conc: 1.18 ug/ml

Instrument :
 FID_D
 ClientSampleId :



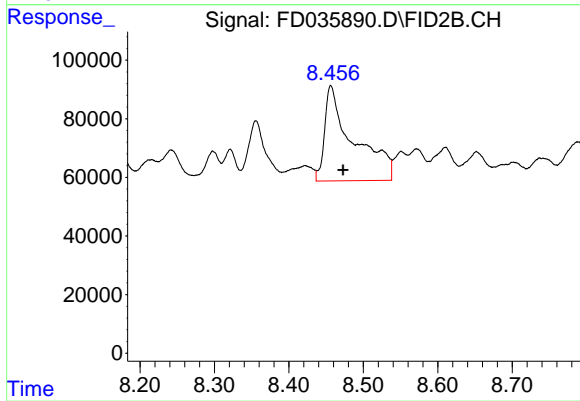
#4 2-Bromonaphthalene (SURR)

R.T.: 7.584 min
 Delta R.T.: -0.012 min
 Response: 1174262
 Conc: 10.76 ug/ml



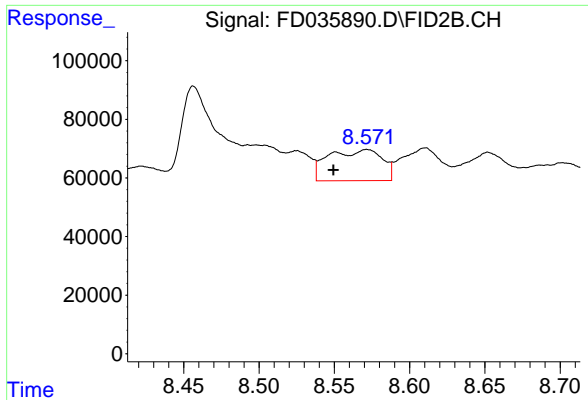
#5 Acenaphthylene (C15.06)

R.T.: 8.298 min
 Delta R.T.: 0.040 min
 Response: 140424
 Conc: 1.11 ug/ml



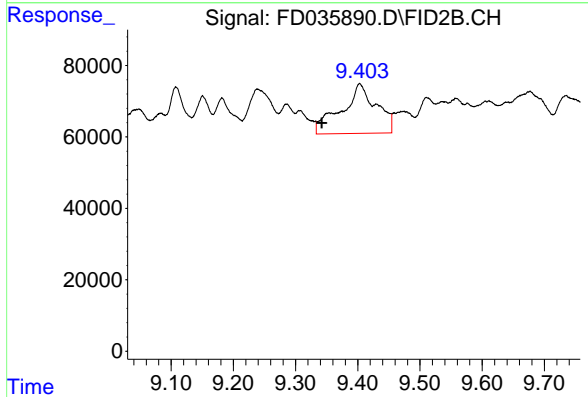
#6 2-Fluorobiphenyl (SURR)

R.T.: 8.457 min
 Delta R.T.: -0.016 min
 Response: 872291
 Conc: 12.56 ug/ml

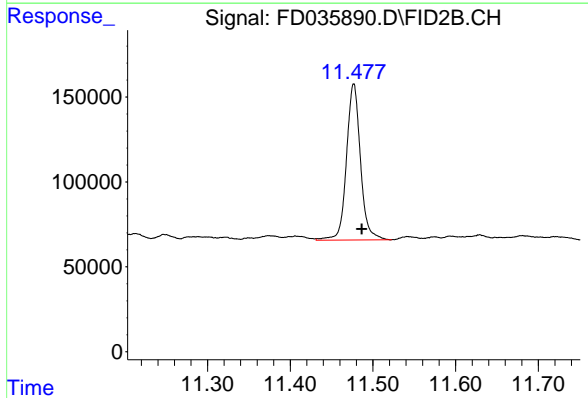


#7 Acenaphthene (C15.5)
 R.T.: 8.572 min
 Delta R.T.: 0.022 min
 Response: 264687
 Conc: 1.95 ug/ml

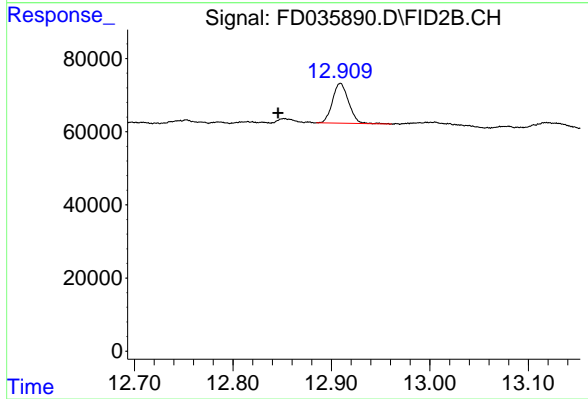
Instrument :
 FID_D
 ClientSampleId :



#8 Flouorene (C16.55)
 R.T.: 9.404 min
 Delta R.T.: 0.062 min
 Response: 541271
 Conc: 4.41 ug/ml



#11 ortho-Terphenyl (SURR)
 R.T.: 11.477 min
 Delta R.T.: -0.010 min
 Response: 1083159
 Conc: 8.38 ug/ml



#13 Pyrene (C20.8)
 R.T.: 12.909 min
 Delta R.T.: 0.063 min
 Response: 123904
 Conc: 1.01 ug/ml