

Data Path : Z:\pestpcbsrv\HPCHEM1\FID_D\Data\FD010621AL\
 Data File : FD035932.D
 Signal(s) : FID2B.CH
 Acq On : 07 Jan 2021 7:36
 Operator : DD\AJ
 Sample : M1005-05
 Misc :
 ALS Vial : 75 Sample Multiplier: 1

Instrument :
 FID_D
 ClientSampleId :
 3

Integration File: autoint1.e
 Quant Time: Jan 07 08:16:35 2021
 Quant Method : Z:\pestpcbsrv\HPCHEM1\FID_D\methods\Alaphatic EPH 122120.M
 Quant Title : GC Extractables
 QLast Update : Tue Dec 22 01:48:46 2020
 Response via : Initial Calibration
 Integrator: ChemStation 6890 Scale Mode: Large solvent peaks clipped

Volume Inj. : 1 ul
 Signal Phase : Rxi-1ms
 Signal Info : 20M x 0.18mm x 0.18um

Compound	R.T.	Response	Conc Units

System Monitoring Compounds			
9) S ortho-Terphenyl (SURR)	11.477	4403464	33.315 ug/ml
Spiked Amount	50.000	Recovery	= 66.63%
12) S 1-chlorooctadecane (S...	12.910	3403620	32.165 ug/ml
Spiked Amount	50.000	Recovery	= 64.33%

Target Compounds

(f)=RT Delta > 1/2 Window

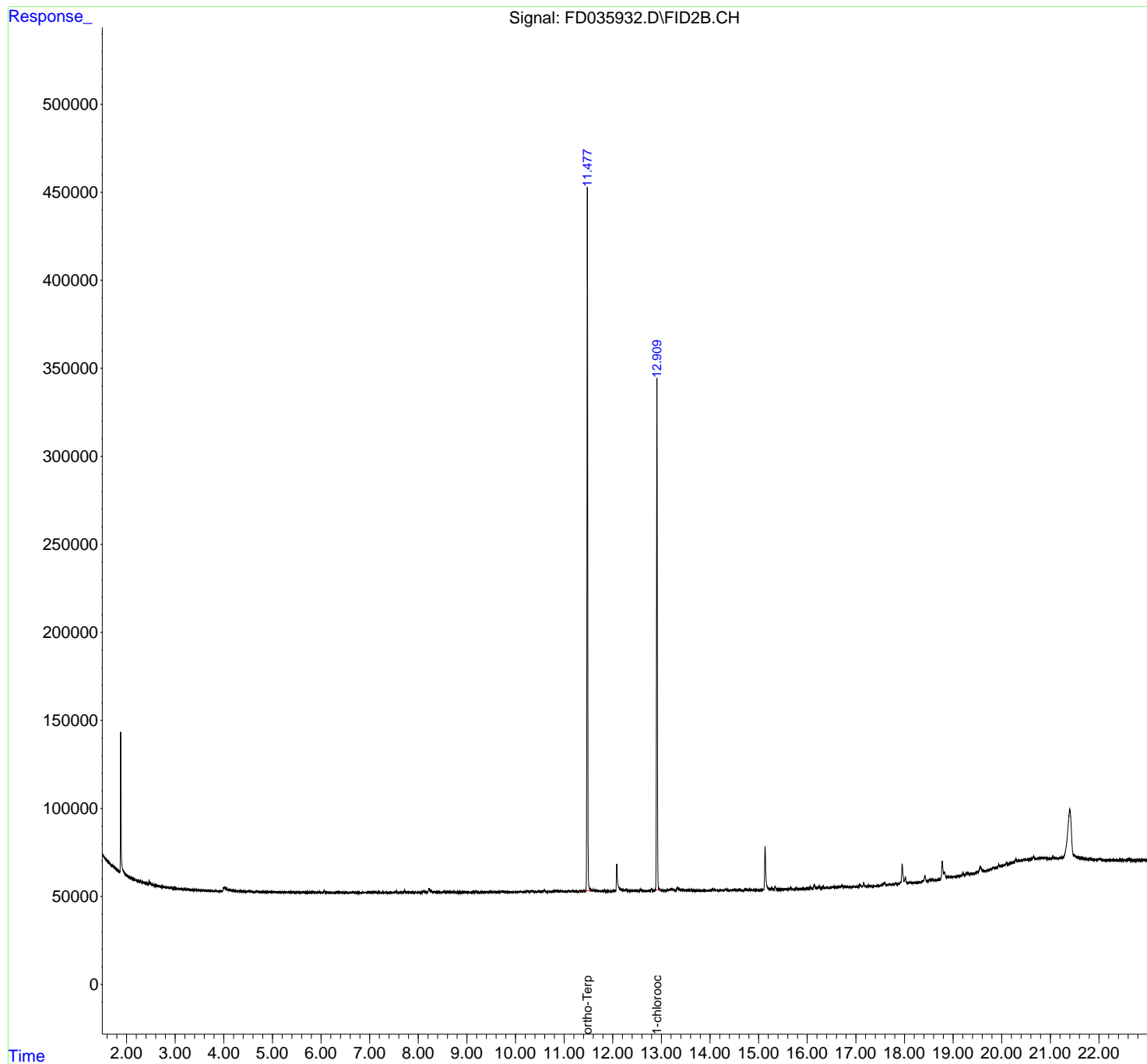
(m)=manual int.

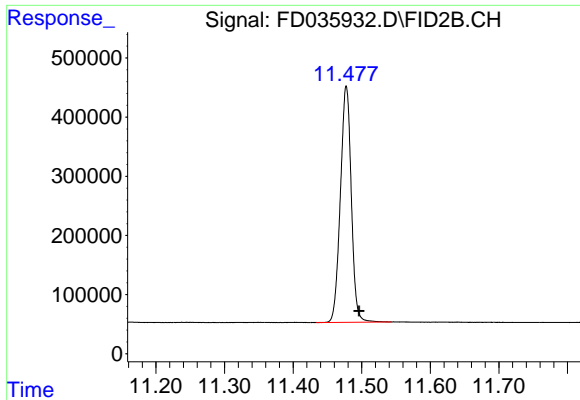
Data Path : Z:\pestpcbsrv\HPCHEM1\FID_D\Data\FD010621AL\
Data File : FD035932.D
Signal(s) : FID2B.CH
Acq On : 07 Jan 2021 7:36
Operator : DD\AJ
Sample : M1005-05
Misc :
ALS Vial : 75 Sample Multiplier: 1

Instrument :
FID_D
ClientSampled :
3

Integration File: autoint1.e
Quant Time: Jan 07 08:16:35 2021
Quant Method : Z:\pestpcbsrv\HPCHEM1\FID_D\methods\Alaphatic EPH 122120.M
Quant Title : GC Extractables
QLast Update : Tue Dec 22 01:48:46 2020
Response via : Initial Calibration
Integrator: ChemStation 6890 Scale Mode: Large solvent peaks clipped

Volume Inj. : 1 ul
Signal Phase : Rxi-1ms
Signal Info : 20M x 0.18mm x 0.18um

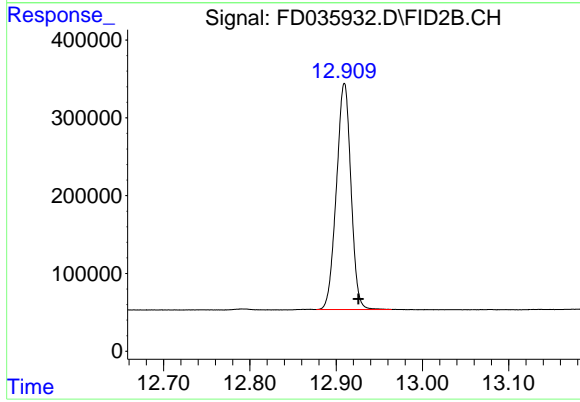




#9 ortho-Terphenyl (SURR)

R.T.: 11.477 min
Delta R.T.: -0.019 min
Response: 4403464
Conc: 33.32 ug/ml

Instrument :
FID_D
ClientSampleId :
3



#12 1-chlorooctadecane (SURR)

R.T.: 12.910 min
Delta R.T.: -0.016 min
Response: 3403620
Conc: 32.17 ug/ml