

Data Path : Z:\pestpcbsrv\HPCHEM1\FID_D\Data\FD010919AL\
Data File : FD027169.D
Signal(s) : FID2B.CH
Acq On : 10 Jan 2019 00:43
Operator : AJ\SJ
Sample :
Misc :
ALS Vial : 51 Sample Multiplier: 1

Integration File: autoint1.e
Quant Time: Jan 10 03:30:08 2019
Quant Method : Z:\pestpcbsrv\HPCHEM1\FID_D\methods\Alaphatic EPH 010719.M
Quant Title : GC Extractables
QLast Update : Tue Jan 08 08:17:25 2019
Response via : Initial Calibration
Integrator: ChemStation 6890 Scale Mode: Large solvent peaks clipped

Volume Inj. : 1 ul
Signal Phase : Rxi-1ms
Signal Info : 20M x 0.18mm x 0.18um

Compound	R.T.	Response	Conc Units

System Monitoring Compounds			
Target Compounds			
21) T n-Octatriacontane (C38)	20.440	336441	5.185 ug/ml

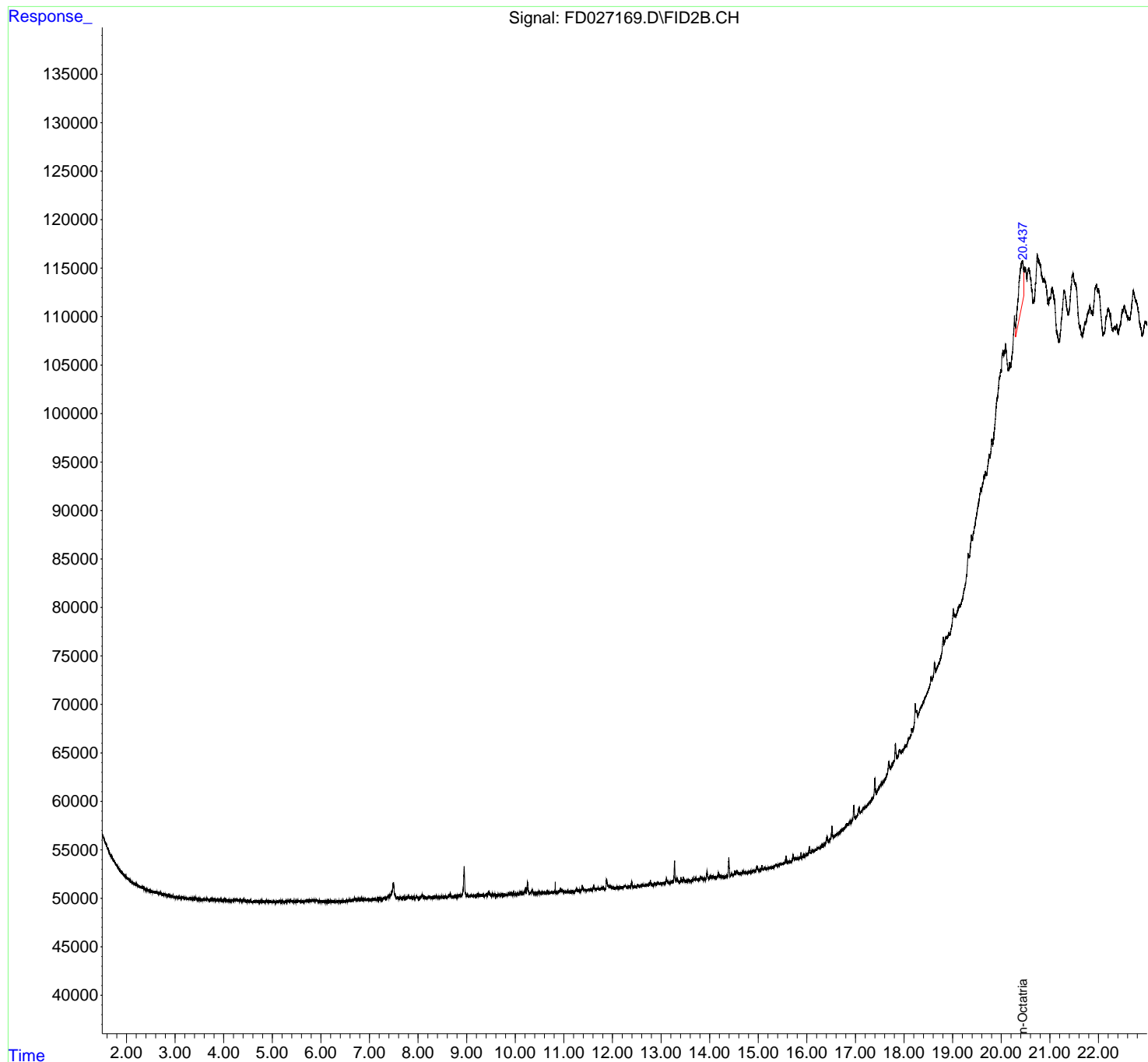
(f)=RT Delta > 1/2 Window

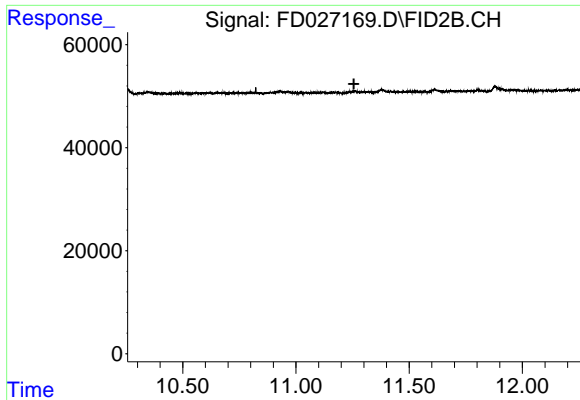
(m)=manual int.

Data Path : Z:\pestpcbsrv\HPCHEM1\FID_D\Data\FD010919AL\
Data File : FD027169.D
Signal(s) : FID2B.CH
Acq On : 10 Jan 2019 00:43
Operator : AJ\SJ
Sample :
Misc :
ALS Vial : 51 Sample Multiplier: 1

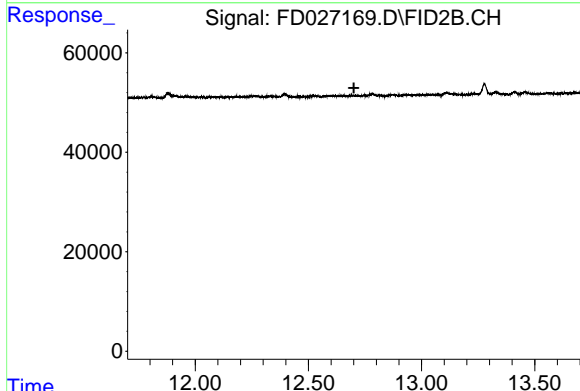
Integration File: autoint1.e
Quant Time: Jan 10 03:30:08 2019
Quant Method : Z:\pestpcbsrv\HPCHEM1\FID_D\methods\Alaphatic EPH 010719.M
Quant Title : GC Extractables
QLast Update : Tue Jan 08 08:17:25 2019
Response via : Initial Calibration
Integrator: ChemStation 6890 Scale Mode: Large solvent peaks clipped

Volume Inj. : 1 ul
Signal Phase : Rxi-1ms
Signal Info : 20M x 0.18mm x 0.18um

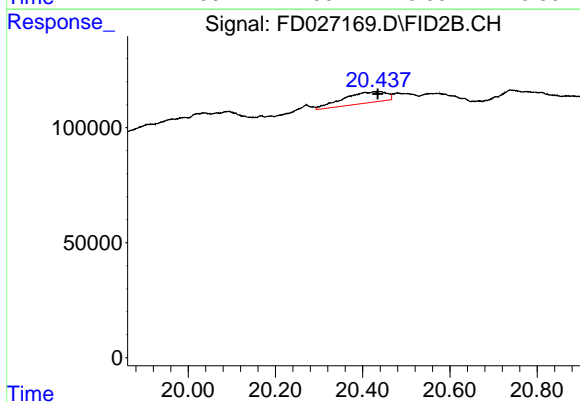




#9 ortho-Terphenyl (SURR)
 R.T.: 0.000 min
 Exp R.T. : 11.256 min
 Response: 0
 Conc: N.D.



#12 1-chlorooctadecane (SURR)
 R.T.: 0.000 min
 Exp R.T. : 12.701 min
 Response: 0
 Conc: N.D.



#21 n-Octatriacontane (C38)
 R.T.: 20.440 min
 Delta R.T.: 0.005 min
 Response: 336441
 Conc: 5.18 ug/ml